

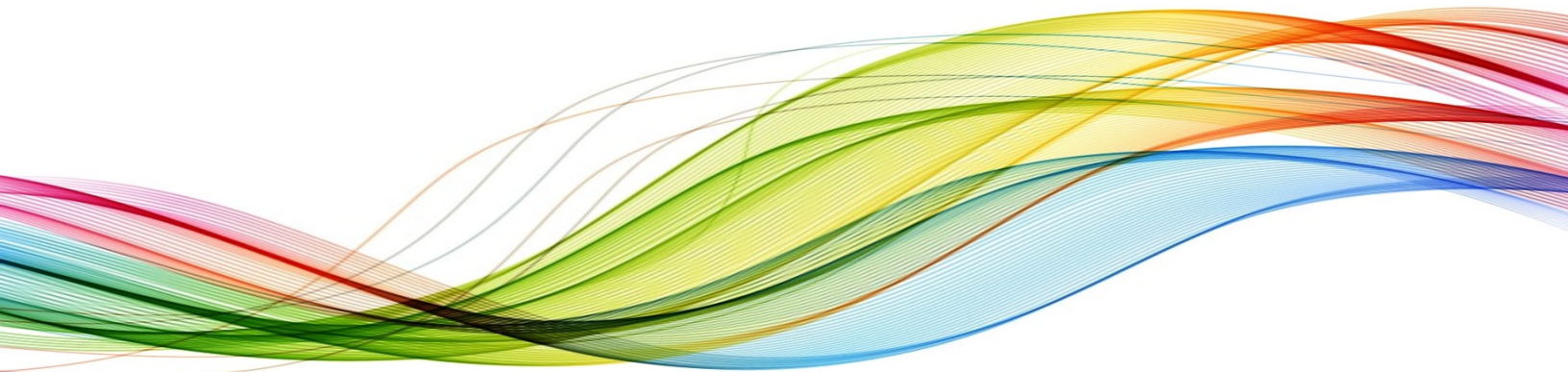


# **Community Health Needs Assessment**

## **Mahaska Health Partnership**

### **Mahaska County, Iowa**

---



**April 2020**

**VVV Consultants LLC**  
**Olathe, KS**

# **Community Health Needs Assessment**

## **Table of Contents**

### **I. Executive Summary**

- a) County Health Area of Future Focus (A prioritized description of future community needs identified by community discussion)
- b) Town Hall CHNA Findings: Areas of Strengths and Areas to Change and/or Improve.

### **II. Methodology**

- a) CHNA Scope and Purpose
- b) Local Collaborating CHNA parties (The identity of any and all organizations with which the organization collaborated and third parties that engaged to assist with the CHNA)
- c) CHNA & Town Hall Research Process (A description of the process & methods used to conduct the CHNA, a description of how the organization considered the input of persons representing the community, and an explanation of the process/ criteria used in prioritizing)
- d) Community Profile (A description of the community served by the facility and how the community was determined)

### **III. Community Health Status**

- a) Historical Community Health Statistics- Secondary Data
- b) Online Research- Health Status

### **IV. Inventory of Existing County Health Resources**

- a) A description of the existing health care facilities and other resources within the community available to meet the needs identified through the CHNA

### **V. Detail Exhibits**

- a) Patient Origin & Access to Care
- b) Town Hall Attendees, Notes, & Feedback (Who attended with qualifications)
- c) Public CHNA Notice / News
- d) Primary Research Detail

# **I. Executive Summary**

---

[VVV Consultants LLC]

## I. Executive Summary

### Mahaska Health Partnership (Primary Service Area) - 2020 Community Health Needs Assessment (CHNA)

Creating healthy communities requires a high level of mutual understanding and collaboration among community leaders. The development of this assessment brings together community health leaders and providers, along with the residents, to research and prioritize county health needs and document community health delivery success. This health assessment will serve as the foundation for community health improvement efforts for the next three years.

Mahaska Health Partnership (Mahaska County, IA) previous CHNA was completed in 2017. (Note: The Patient Protection and Affordable Care Act (ACA) require not-for-profit hospitals to conduct a CHNA every three years and adopt an implementation strategy to meet the needs identified by the CHNA). Wave #3 MHP (Primary Service Area) CHNA assessment began December 2019 and was facilitated / created by VVV Consultants, LLC (Olathe, KS) staff under the direction of Vince Vandelaar, MBA.

**Important community CHNA Benefits** for both the local hospital and the health department, are as follows: 1) Increases knowledge of community health needs and resources 2) Creates common understanding of the priorities of the community's health needs 3) Enhances relationships and mutual understanding between and among stakeholders 4) Provides a basis upon which community stakeholders can make decisions about how they can contribute to improving the health of the community 5) Provides rationale for current and potential funders to support efforts to improve the health of the community 6) Creates opportunities for collaboration in delivery of services to the community and 7) Provides guidance to the hospital and local health department for how they can align their services and community benefit programs to best meet needs, and 8) fulfills Hospital "Mission" to deliver.

#### a) County Health Area of Future Focus

**Mahaska County, Iowa: Town Hall - "Community Health Improvements Needs"**

<b>2020 CHNA Health Priorities Mahaska County, IA CHNA Wave #3 Town Hall - March 5, 2020 Mahaska Health Partnership PSA (39 Attendees, 128 Total Votes)</b>				
#	Community Health Needs to Change and/or Improve	Votes	%	Accum
1	Awareness of Healthcare Services	27	21.1%	21.1%
2	Mental Health (Diagnosis, Treatment, Aftercare)	25	19.5%	40.6%
3	Obesity (Nutrition / Exercise)	17	13.3%	53.9%
4	Diabetes	13	10.2%	64.1%
5	Healthcare Apathy - Own Your Own Health	12	9.4%	73.4%
6	Drug Abuse (Opioids, Meth, Marijuana)	10	7.8%	81.3%
	<b>Total Votes:</b>	<b>128</b>	<b>100.0%</b>	
Other Items receiving votes: Care going Outside Community, STDs, Provider Turnover, Violence, Alcohol, and Food Insecurity.				

## b) Town Hall CHNA Findings: Areas of Strengths

### Mahaska County, Iowa: Town Hall - "Community Health Areas of Strengths"

Mahaska County "Community Health Strengths"			
#	Topic	#	Topic
1	Access to YMCA and Rec Facilities	6	Hospice
2	Church Involvement	7	Hospital Proactivity
3	Corporate Involvement	8	New Providers
4	Educational Opportunities	9	Prenatal Care
5	Great Staff, Hospital and Vision	10	Public Health

### Key CHNA Wave#3 Secondary Research Conclusions are as follows:

**IOWA HEALTH RANKINGS:** According to the 2019 Robert Wood Johnson County Health Rankings, Mahaska County, IA Average was ranked 58<sup>th</sup> in Health Outcomes, 65<sup>th</sup> in Health Factors, and 52<sup>nd</sup> in Physical Environmental Quality out of the 99 Counties.

**TAB 1.** Mahaska County's population is 22,000 (based on 2018), with a population per square mile (based on 2010) of 39.2 persons. Seven percent (6.6%) of the population is under the age of 5 and 18.3% is over 65 years old. Hispanic or Latinos make up 2.4% of the population and there are 2.5% of Mahaska County citizens that speak a language other than English at home. Children in single parent households make up 30% and 85.2% are living in the same house as one year ago. There are 1,241 Veterans living in Mahaska County.

**TAB 2.** The per capita income in Mahaska County is \$27,061 while 12% of the population is in poverty. There is a severe housing problem of 11% and an unemployment rate of 3.3%. Food insecurity is 13%, and limited access to a store (healthy foods) is 8% in Mahaska County. Twenty percent (20%) to 40% of Mahaska County citizens have a long commute.

**TAB 3.** Children eligible for a free or reduced-price lunch is 46% and 91.2% of students graduate high school while 22.3% of students get their bachelor's degree or higher in Mahaska County. There are many public school nurses assisting with overall health care.

**TAB 4.** The percent of births where prenatal care started in the first trimester is 86.6 Thirty-two percent (32.1%) of births in Mahaska County occur to unmarried women. Births where mothers have smoked during the pregnancy is at 19.6% and the percent of babies that were born prematurely is about 10.2%.

**TAB 5.** There is one primary care physician per 1,235 people in Mahaska County. Seventy-two percent (72%) of patients gave their hospital a rating of 9 or 10 out of 10 and there are 64% of patients who reported Yes, They Would Definitely Recommend the Hospital.

**TAB 6.** Medicare population getting treated for depression in Mahaska County is 16.5%. There are 3.2 days out of the year that are considered poor mental health days. The age-adjusted suicide mortality rate per 100,000 is 12.6 in Mahaska County.

**TAB 7.** Thirty-two percent (32%) of adults in Mahaska County are obese (based on 2015), with 24% of the population physically inactive. Twenty percent (20%) of adults drink excessively and 16% smoke. The rate per 100,000 sexually transmitted diseases is higher than the comparative

norm (573.4). Heart Failure (12.7%), Chronic Kidney Disease (18.3%), Atrial Fibrillation (8.2%), Cancer (6.3%), Osteoporosis (4.1%), Asthma (2.9%) and Stroke (1.9%) risk are all at or below the competitive norm

**TAB 8.** The adult uninsured rate for Mahaska County is 4% (based on 2016). Public Health at MHP is assisting the county with health care to the community.

**TAB 9.** The life expectancy rate in Mahaska County is 77.8 for Males and 82.4 for Females. Alcohol-impaired driving deaths for Mahaska County is 24% while Age-adjusted Cancer Mortality rate per 100,000 is high, at 245.5. Age-adjusted Heart Disease Mortality rate per 100,000 is high at 226.

**TAB 10.** Seventy-nine percent (79%) of Mahaska County has access to exercise opportunities and 12% monitor diabetes. Forty-four percent (44%) of women in Mahaska County get annual mammography screenings.

**Key 2020 Community Feedback Conclusions: Stakeholder feedback from residents, community leaders and providers (N=379) provided the following community insights via an online perception survey:**

- Using a Likert scale, 53.8% of Mahaska County stakeholders would rate the overall quality of healthcare delivery in their community as either Very Good or Good.
- Mahaska County stakeholders are satisfied with the following services: Ambulance Services, Chiropractors, Dentists, Eye Doctors, Hospice, Pharmacy and School Nurses.
- When considering past CHNA needs: Mental Health, Obesity, Providers / Visiting Specialists, Access to Primary Care, Smoking and Knowledge of Healthcare Services came up.

CHNA Wave #3 - Year 2020		Mahaska Co, IA N=379			
Past CHNAs health needs identified		Ongoing Problem			Pressing
#	Topic	Votes	%	Trend	RANK
1	Mental Health	224	88.5%		1
2	Obesity	147	58.1%		2
3	Providers / Visiting Specialists	89	35.2%		4
4	Access to Primary Care	88	34.8%		3
5	Smoking	87	34.4%		7
6	Knowledge of Healthcare Services	86	34.0%		5
7	Safe Rental Housing	81	32.0%		6
8	Dental Providers accepting Medicaid	77	30.4%		8
9	Sexually Transmitted Infections	58	22.9%		9
10	Out of Area Access to Care	36	14.2%		10

## **II. Methodology**

---

**[VVV Consultants LLC]**

## II. Methodology

### a) CHNA Scope and Purpose

The federal Patient Protection and Affordable Care Act (ACA) requires that each registered 501(c)3 hospital conduct a Community Health Needs Assessment (CHNA) at least once every three years and adopt a strategy to meet community health needs. Any hospital that has filed a 990 is required to conduct a CHNA. IRS Notice 2011-52 was released in late fall of 2011 to give notice and request comments.

#### **JOB #1: Meet/Report IRS 990 Required Documentation**

1. A description of the community served by the facility and how the community was determined;
2. A description of the process and methods used to conduct the CHNA;
3. The identity of any and all organizations with which the organization collaborated and third parties that it engaged to assist with the CHNA;
4. A description of how the organization considered the input of persons representing the community (e.g., *through meetings, focus groups, interviews, etc.*), who those persons are, and their qualifications;
5. A prioritized description of all of the community needs identified by the CHNA and an explanation of the process and criteria used in prioritizing such needs; and
6. A description of the existing health care facilities and other resources within the community available to meet the needs identified through the CHNA.

Section 501(r) provides that a CHNA must take into account input from persons who represent the broad interests of the community served by the hospital facility, including individuals with special knowledge of or expertise in public health. Under the Notice, the persons consulted must also include: Government agencies with current information relevant to the health needs of the community and representatives or members in the community who are medically underserved, low-income, minority populations, and populations with chronic disease needs. In addition, a hospital organization may seek input from other individuals and organizations located in or serving the hospital facility's defined community (e.g., health care consumer advocates, academic experts, private businesses, health insurance and managed care organizations, etc.).

#### **JOB #2: Making a CHNA Widely Available to the Public**

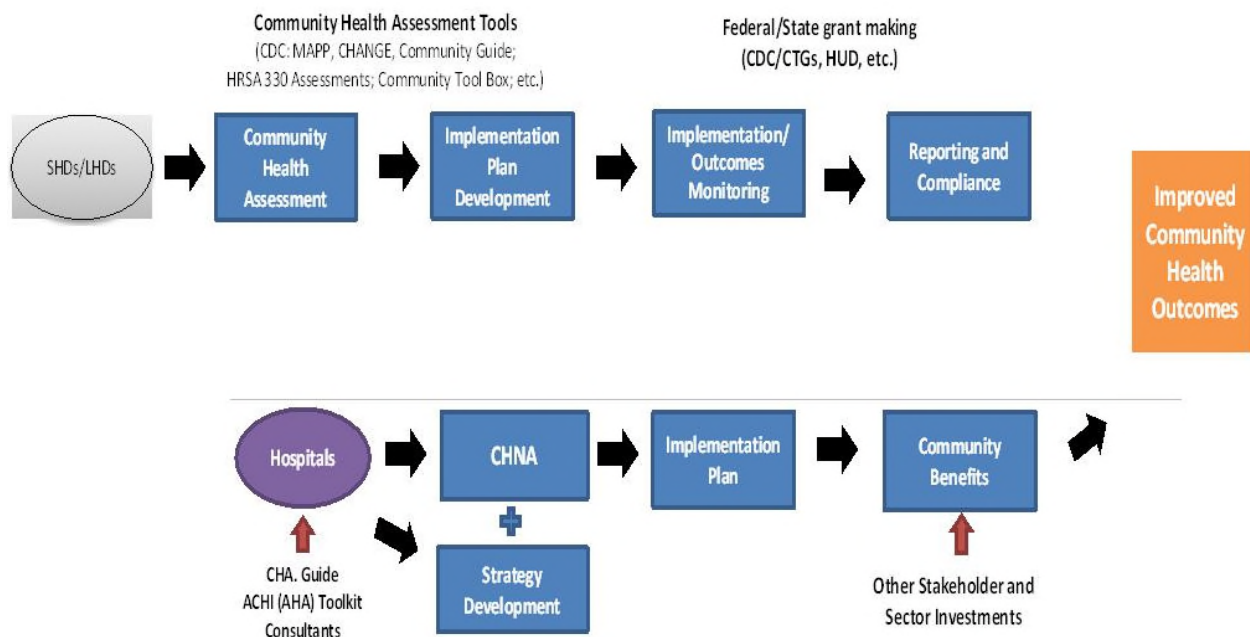
The Notice provides that a CHNA will be considered to be "conducted" in the taxable year that the written report of the CHNA findings is made widely available to the public. The Notice also indicates that the IRS intends to pattern its rules for **making a CHNA "widely available to the public"** after the rules currently in effect for Form 990. Accordingly, an organization would make a **facility's written report** widely available by posting the final report on its website either in the form of (1) the report itself, in a readily accessible format or (2) a link to another organization's website, along with instructions for accessing the report on that website. *The Notice clarifies that an organization must post the CHNA for each facility until the date on which its subsequent CHNA for that facility is posted.*



### **JOB #3: Adopt an Implementation Strategy by Hospital**

Section 501(r) requires a hospital organization to adopt an implementation strategy to meet the needs identified through each CHNA. The Notice defines an “implementation strategy” as a written plan that addresses each of the needs identified in a CHNA by either (1) describing how the facility plans to meet the health need or (2) identifying the health need as one that the facility does not intend to meet and explaining why the facility does not intend to meet it. A hospital organization may develop an implementation strategy in collaboration with other organizations, which must be identified in the implementation strategy. As with the CHNA, a hospital organization that operates multiple hospital facilities must have a separate written implementation strategy for each of its facilities.

Great emphasis has been given to work hand-in-hand with leaders from hospitals, the state health department and the local health department. A common approach has been adopted to create the CHNA, leading to aligned implementation plans and community reporting.



## **IRS Notice 2011-52 Overview**

### **Notice and Request for Comments Regarding the Community Health Needs Assessment Requirements for Tax-exempt Hospitals**

#### **Applicability of CHNA Requirements to “Hospital Organizations”**

The CHNA requirements apply to “hospital organizations,” which are defined in Section 501(r) to include (1) organizations that operate one or more state-licensed hospital facilities, and (2) any other organization that the Treasury Secretary determines is providing hospital care as its principal function or basis for exemption.

#### **How and When to Conduct a CHNA**

Under Section 501(r), a hospital organization is required to conduct a CHNA for each of its hospital facilities once every three taxable years. ***The CHNA must take into account input from persons representing the community served by the hospital facility and must be made widely available to the public. The CHNA requirements are effective for taxable years beginning after March 23, 2012.*** As a result, a hospital organization with a June 30 fiscal year end must conduct an initial CHNA for each of its hospital facilities by June 30, 2013, either during the fiscal year ending June 30, 2013 or during either of the two previous fiscal years.

#### **Determining the Community Served**

A CHNA must identify and assess the health needs of the **community served** by the hospital facility. Although the Notice suggests that geographic location should be the primary basis for defining the community served, it provides that the organization may also take into account the target populations served by the facility (e.g., children, women, or the aged) and/or the facility’s principal functions (e.g., specialty area or targeted disease). *A hospital organization, however, will not be permitted to define the community served in a way that would effectively circumvent the CHNA requirements (e.g., by excluding medically underserved populations, low-income persons, minority groups, or those with chronic disease needs).*

#### **Persons Representing the Community Served**

Section 501(r) provides that a CHNA must take into account input from **persons who represent the broad interests of the community** served by the hospital facility, including individuals with special knowledge of or expertise in public health. Under the Notice, the persons consulted must also include: (1) government agencies with current information relevant to the health needs of the community and (2) representatives or members of medically underserved, low-income, and minority populations, and populations with chronic disease needs, in the community. In addition, a hospital organization may seek input from other individuals and organizations located in or serving the hospital facility’s defined community (e.g., health care consumer advocates, academic experts, private businesses, health insurance and managed care organizations, etc).

## Required Documentation

The Notice provides that a hospital organization will be required to separately document the CHNA for each of its hospital facilities in a **written report** that includes the following information: 1) a description of the community served by the facility and how the community was determined; 2) a description of the process and methods used to conduct the CHNA; 3) the identity of any and all organizations with which the organization collaborated and third parties that it engaged to assist with the CHNA; 4) a description of how the organization considered the input of persons representing the community (e.g., through meetings, focus groups, interviews, etc.), who those persons are, and their qualifications; 5) a prioritized description of all of the community needs identified by the CHNA and an explanation of the process and criteria used in prioritizing such needs; and 6) a description of the existing health care facilities and other resources within the community available to meet the needs identified through the CHNA.

## Making a CHNA Widely Available to the Public

The Notice provides that a CHNA will be considered to be **“conducted”** in the taxable year that the written report of the CHNA findings is made **widely available to the public**. The Notice also indicates that the IRS intends to pattern its rules for making a CHNA “widely available to the public” after the rules currently in effect for Forms 990. *Accordingly, an organization would make a facility’s written report widely available by posting on its website either (1) the report itself, in a readily accessible format, or (2) a link to another organization’s website, along with instructions for accessing the report on that website. The Notice clarifies that an organization must post the CHNA for each facility until the date on which its subsequent CHNA for that facility is posted.*

## How and When to Adopt an Implementation Strategy

Section 501(r) requires a hospital organization to adopt an implementation strategy to meet the needs identified through each CHNA. **The Notice defines an “implementation strategy” as a written plan that addresses each of the needs identified in a CHNA by either (1) describing how the facility plans to meet the health need, or (2) identifying the health need as one that the facility does not intend to meet and explaining why the facility does not intend to meet it.** A hospital organization may develop an implementation strategy in collaboration with other organizations, which must be identified in the implementation strategy. As with the CHNA, a hospital organization that operates multiple hospital facilities must have a separate written implementation strategy for each of its facilities.

Under the Notice, an implementation strategy is considered to be “adopted” on the date the strategy is approved by the organization’s board of directors or by a committee of the board or other parties legally authorized by the board to act on its behalf. Further, the formal adoption of the implementation strategy must occur by the end of the same taxable year in which the written report of the CHNA findings was made available to the public. For hospital organizations with a June 30 fiscal year end, that effectively means that the organization must complete and appropriately post its first CHNA no later than its fiscal year ending June 30, 2013, and formally adopt a related implementation strategy by the end of the same tax year. *This final requirement may come as a surprise to many charitable hospitals, considering Section 501(r) contains no deadline for the adoption of the implementation strategy.*

# Public Health Criteria:

## **Domain 1: Conduct and disseminate assessments focused on population health status and public health issues facing the community.**

Domain 1 focuses on the assessment of the health of the population in the jurisdiction served by the health department. The domain includes: systematic monitoring of health status; collection, analysis, and dissemination of data; use of data to inform public health policies, processes, and interventions; and participation in a process for the development of a shared, comprehensive health assessment of the community.

### **DOMAIN 1 includes 4 STANDARDS:**

- **Standard 1.1** - Participate in or Conduct a Collaborative Process Resulting in a Comprehensive Community Health Assessment
- **Standard 1.2** - Collect and Maintain Reliable, Comparable, and Valid Data That Provide Information on Conditions of Public Health Importance and on the Health Status of the Population
- **Standard 1.3** - Analyze Public Health Data to Identify Trends in Health Problems, Environmental Public Health Hazards, and Social and Economic Factors That Affect the Public's Health
- **Standard 1.4** - Provide and Use the Results of Health Data Analysis to Develop Recommendations Regarding Public Health Policy, Processes, Programs, or Interventions

### **Required CHNA Planning Process Requirements:**

- a. Participation by a wide range of community partners.
- b. Data / information provided to participants in CHNA planning process.
- c. Evidence of community / stakeholder discussions to identify issues & themes. Community definition of a "healthy community" included along with list of issues.
- d. Community assets & resources identified.
- e. A description of CHNA process used to set priority health issues.

### **Seven Steps of Public Health Department Accreditation (PHAB):**

1. Pre-Application
2. Application
3. Document Selection and Submission
4. Site Visit
5. Accreditation Decision
6. Reports
7. Reaccreditation

## **II. Methodology**

### **b) Collaborating CHNA Parties**

Working together to improve community health takes collaboration. Listed below is an in-depth profile of the local hospital and health department CHNA partners:

#### **Mahaska Health Partnership**

**1229 C Ave. E, Oskaloosa, IA 52577**

**Phone: (641) 672 3100**

**Chief Executive Officer: Kevin DeRonde**

**About Us:** Mahaska Health Partnership in Oskaloosa, Iowa is a thriving medical campus providing services from birth to end-of-life, and everything in between – including emergency care, outpatient services, classes, support groups, and elective and preventive healthcare. But it's not what we do that sets us apart from other healthcare centers in Mahaska county; it's the core values that inform every aspect of how we deliver a personalized healthcare experience. No one wants cold, impersonal healthcare – least of all us.

Our mission is to bring the humanity of compassionate care together with the latest technology and most informed science, treating all with honesty, respect, and confidentiality. We treat your family like they're our family, from the receptionist's desk all the way to the recovery room. It's these values that make us the best rural healthcare team in Iowa.

Nowhere is our family-centric approach more evident than in our new Birthing Center. Our goal is to make the birth of your baby an experience you can enjoy, cherish, and share with dad, siblings and extended family in our spacious private suites. The birth of a baby is a miracle, and we are honored every time we share this joyous experience with our patients.

Just as the beginning of life is filled with love and family, we believe that the end of life should be supported with equal care - which is how we operate the Mahaska Health Partnership Hospice Serenity House. When hospice care can no longer take place at home, we offer our home staffed with nurses trained to meet the unique needs of hospice patients and their loved ones.

Life is a journey. It has its challenges, its soaring highs, and deepest valleys. We want to care for you and family through every turn. From the birth of your baby, to your surgery; emergency to elective healthcare services and all the sore throats, bumps and bruises along the way; the MHP family is here to care for you.

**Welcome:** At Mahaska Health Partnership, we've made a commitment to Make Healthcare Personal for our patients, visitors and staff. As an organization, we have defined who we are and adopted many quality standards to help ensure we are meeting our commitment at every opportunity.

Our mission is to provide exceptional customer service and health improvement, linking the science of medicine with the humanity of compassionate care. We fulfill our mission through our core values of accountability, taking responsibility for quality healthcare and resource management; collaboration, working together to achieve our shared goals; excellence in exceeding expectations; innovation by enhancing services through creativity and technology;

and integrity, treating all with honesty, respect and confidentiality. These values help us realize our vision to be the best rural healthcare team in Iowa. Our vision enables us to deliver on our promise to you: At Mahaska Health Partnership, we treat you and yours like family. From your first experience with a receptionist to your surgery and recovery; our family is with you every step of the way to ensure you receive the same high quality care and compassion we would expect for our own family and neighbors.

MHP is a thriving medical campus with a history dating back more than 100 years. We provide services from birth to end-of-life for emergency, elective and preventive healthcare. While we are proud of the strides we have made as an organization and the expanding number of healthcare services we are able to provide close to home, our focus is always on the future. We are continually evolving our quality standards, available providers and our services to ensure we are meeting the healthcare needs of you and your family, today and for generations to come.

**Outpatient Services:** Improve your life. Get well. Stay well. Feel your absolute best. That's what our full complement of outpatient services at Mahaska Health Partnership is all about. Whether you're coming in to finally get that good night's sleep, help your child speak more easily, treat pain with massage, get that mammogram or visit our Level III Trauma Center, we are here to offer not only solutions, but support. Here is our full list of outpatient services.

- Behavioral Health Services
- Cancer Care & Infusion Center
- Cardiopulmonary Services
- Diabetes Education
- Emergency Services
- Flight Physicals
- Home Health & Hospice Services
- Laboratory Services
- Massage Therapy
- Medical Group
- Medical Nutrition Therapy
- New Sharon Medical Center
- Occupational Health Services
- Physical & Occupational Therapy
- Public Health Services
- Radiology Services
- Sleep Services
- Speech Therapy Services
- Surgical Services
- Walk-In

**Inpatient Services:** When we planned the details of our new Inpatient Services unit, we asked ourselves: What would help patients feel better? How can we best support their recovery, and their concerns? What kind of care would we want our mother, our grandfather, or our brother to have? The answers to these questions can be found in everything we do to ensure your ongoing safety and comfort.

For all of our patients staying with us: We use state-of-the-art technologies; We have hourly nursing rounds; We have a daily quiet time to ensure your rest and relaxation; We have staff specially trained to not only offer care, but support and compassion; We have some of the best doctors, nurses, and volunteers in Oskaloosa!

- Birthing Center
- Hospice – Serenity House
- Surgical Services

## **Mahaska Health Partnership Public Health**

**1225 C Avenue East, Oskaloosa, IA 52577**

**Located in Mahaska Health East on the MHP campus**

**Phone: (641) 672 3257**

**Hours: M - F 8:00 a.m. to 4:30 p.m.**

**Public Health Coordinator: Patty Malloy**

**Public Health Services:** Mahaska Health Partnership has partnered with Mahaska County to provide necessary public health services for the community. Everyone from birth to end-of-life is eligible to utilize the services offered by Public Health. These services are provided based on need and eligibility, and will be set up on a sliding fee scale based on each individual or family income. Through the services we provide, our goal is to promote the health and well-being of our community.

**Our Mission:** Enhance the health and well-being of the communities we serve.

### **Mahaska County Public Health Service Offerings**

- Public Health Emergency Preparedness
  - Active in Service Area 1C Coalition as voting member.
  - Strong linkages with area partners, such as the emergency management agency, schools, law enforcement, and other care providers.
- Immunization services
  - Vaccine for Children's (VFC) Program, providing vaccines to children birth through age 18 years old who are enrolled in Medicaid, uninsured, underinsured, American Indian or Alaskan Native.
  - Adult immunizations are available upon request and availability.
  - Annual school and daycare audits of immunization coverage in Mahaska County.
  - Seasonal flu vaccine clinics off campus or done in conjunction with blood pressure screenings and an annual drive through flu clinic held on campus.
- Disease Outbreak Investigation
  - Reportable disease follow-up and surveillance, including case identification and case finding, prevention and control of spread of infectious communicable and environmental disease, and surveillance.
- Nursing Health Maintenance Home visits
  - Registered nursing visits for medication management and venipunctures (lab draws)
  - Based on need and agency criteria
  - Cost for these services is based on a sliding scale fee, no insurance can be billed.
- Homemaker / Home Care Aide visits
  - Home visits are provided for essential services including bathing, grocery shopping, laundry, and light housekeeping.
  - Based on need and agency criteria
  - Cost for these services are based on a sliding scale fee, no insurance can be billed.
- Health Promotion
  - Perfect Beginnings Program is for new mom and Baby Home Visits.

- Offered to moms delivering at MHP and all moms residing in Mahaska County are eligible upon request.
- Screening and Assessment
  - Multiple blood pressure clinics and screenings.
  - Held in various locations within the county and can be done on request.
  - Other screenings available include diabetes, head lice, and tuberculosis.
- Health Education
  - Hand washing demonstrations for preschool and health fairs.
  - Participate in events such as YMCA Kids Day, Back to School Event, Oskaloosa Elementary Kindergarten Round up, and Women's Health Night.
- Collaborative Relationships
  - Meetings attended with community partners to assist with identifying and addressing public health issues. Currently Public Health staff attends and partners with:
    - Community Partners for Protecting Children- meet monthly
    - Community Behavioral Wrap Around Committee- meet monthly during school calendar
    - Assisting with reestablishing Mahaska Safe Kids (Child Abuse Prevention)
- Promoting awareness of Public Health in Mahaska County
  - Establishment of Facebook page and public health logo recently
- Lead agency for the HRSA Rural Communities Opioid Response (Planning) Grant
  - Collaborating with Appanoose, Davis and Wapello Counties to identify needs for persons who use opioids.

### **Other Public Health Functions**

- Community Utility Resource & Referral
  - Assisting consumers with identifying health or social needs and then providing appropriate referrals to the proper entity.
- Public Health System Development
  - Increase Public Health capacity for investigation and applying evidence-based Public Health practice or work toward meeting Public Health standards.
- Community Health Assessment and Health Improvement Plan and Implementation
  - Includes identification of health problems and the development and implementation of health improvement strategies.



## II. Methodology

### b) Collaborating CHNA Parties Continued

#### Consultant Qualifications



##### VVV Consultants LLC

Company Profile: 601 N. Mahaffie, Olathe, KS 66061 (913) 302-7264

**Vince Vandelaar MBA, Principal Consultant & Adjunct** (913) 302-7264

[VVV@VandelaarMarketing.com](mailto:VVV@VandelaarMarketing.com)

Vince provides professional business consulting services to help healthcare organizations with business strategy, research and development. Specifically, Vince facilitates strategic planning, creates proven marketing plans/tactics, prepares IRS aligned community health needs assessments and conducts both qualitative and quantitative market research studies.

Vince started his consulting firm (VVV Consultants LLC) on 1/1/2009, after working for Saint Luke's Health System of Kansas City for 16 years. (Note: Saint Luke's Hospital of KC, SLHS's largest hospital, won the Malcolm Baldrige National Quality Award in March of 2003). Prior to his experience at Saint Luke's, Vince worked in the payor and insurance industry for Blue Cross and Blue Shield of Kansas City; Tillinghast, a Tower's Perrin Actuarial Consulting Firm; and Lutheran Mutual Life Insurance Company.

Vince also is an Adjunct Professor teaching BA, MBA & MHA classes part time 20% of his time at Avila, Rockhurst and/or Webster University (Strategic Planning, Marketing, MHA Capstone, Marketing Research, Sales & Social Media classes) and consults the remainder of his time.

Vince is a Malcolm Baldrige coach and a professional focus group moderator. He is actively involved in the national Society for Healthcare Strategy & Market Development (SHSMD), KHA/MHA Marketing Associations, KC Employee Benefit Professional Association, Healthcare Executives Kansas City, the American Marketing Association KC Chapter and is a SG2 advocate.

#### Collaborating Support:

Tessa Taylor BBA BA - VVV Consultants LLC

Lead Consultant

## II. Methodology

### c) CHNA and Town Hall Research Process

Wave #3 Community Health Needs Assessment (CHNA) process began in December 2019 for Mahaska Health Partnership (MHP) (Mahaska County, Iowa) to meet IRS CHNA requirements.

In December, a meeting was called by MHP to review CHNA collaborative options. Note: VVV Consultants LLC from Olathe, KS was asked to facilitate this discussion with the following agenda: VVV CHNA experience, review CHNA requirements (regulations) and discuss CHNA steps/options to meet IRS requirements and to discuss next steps. Outcomes from discussion led to MHP requesting VVV Consultants LLC to complete a CHNA IRS aligned comprehensive report.

#### VVV CHNA Deliverables:

- Document Hospital Primary Service Area - meets the 80-20 Patient Origin Rule.
- Uncover / document basic secondary research county health data, organized by 10 tabs.
- Conduct / report CHNA Community Check-in Feedback Findings (primary research).
- Conduct a Town Hall meeting to discuss with community secondary & primary data findings leading to determining (prioritizing) county health needs.
- Prepare & publish CHNA report which meets ACA requirements.

To ensure proper PSA Town Hall representation (that meets the 80-20 Patient Origin Rule), a patient origin three-year summary was generated documenting patient draw by zips as seen below:

MHP YR 2018-16 Patients (IP/OP/ER/PC) by Zip				228,403		
Serv	Zip	City	County	3YR Total	%	Accum
PS	52577	Oskaloosa	MAHASKA	133,129	58.3%	58.3%
PS	50207	New Sharon	MAHASKA	13,409	5.9%	64.2%
PS	52561	Fremont	MAHASKA	5,196	2.3%	66.4%
PS	52534	Beacon	MAHASKA	3,333	1.5%	67.9%
PS	52586	Rose Hill	MAHASKA	3,191	1.4%	69.3%
PS	50027	Barnes City	MAHASKA	1,666	0.7%	70.0%
PS	52543	Cedar	MAHASKA	1,280	0.6%	70.6%
PS	50143	Leighton	MAHASKA	1,088	0.5%	71.1%
SA	52501	Ottumwa	WAPELLO	9,750	4.3%	75.3%
SA	52553	Eddyville	WAPELLO	7,548	3.3%	78.6%
SA	50268	What Cheer	KEOKUK	5,043	2.2%	80.8%

Specific CHNA roles, responsibility and project timelines are documented by the following calendar.

# Mahaska Health Partnership - 2020 CHNA Work Plan

## Mahaska County, Iowa - Project Timeline and Roles

Step	Date	Lead	Task
1	11/1/2019	VVV	Sent MHS information regarding CHNA Wave #3 for review.
2	12/12/2019	VVV	Per phone conversation - Dr Rippentrop, select CHNA Option C.
3	12/18/2019	Hosp / HD	Hold on site CHNA Wave #3 Kickoff Meeting (Dr Rippentrop and DOH lead).
4	12/20/2019	VVV	Send out REQCommInvite Excel file. Hospital client to fill in PSA key stakeholder names, addresses and e-mail addresses.
5	12/20/2019	VVV	Request hospital client to send IHA Patient Origin reports for Mahaska County, IA to document service area for FFY 16, 17, 18 and 19 (if available). In addition, request hospital client to complete three year historical PSA IP / OP /ER / Clinic Patient Origin file (use ZipPSA_3yrPOrigin.xls).
6	On or before 1/10/2020	VVV	Prepare CHNA stakeholder feedback online link. Send link for hospital client to review.
7	On or before 1/10/2020	Hosp / HD	Prepare and send out PR story to local media announcing upcoming CHNA work / online survey for hospital client to place. Request public to participate.
8	On or before 1/27/2020	VVV	Launch online survey to stakeholders. Hospital client will e-mail invite to participate to all stakeholders. Survey to end Friday 2/21/2020.
9	On or before 2/14/2020	VVV	Assemble and complete secondary research. Find and populate 10 TABS. Create Town Hall PowerPoint for presentation.
10	On or before 2/14/2020	Hosp / HD	Prepare and send out community Town Hall invite letter and place local advertisement.
11	On or before 2/14/2020	VVV / Hosp / HD	Prepare and send out PR story to local media announcing upcoming Town Hall. VVV will mock up PR release to media sources.
12	On or before 3/4/2020	VVV / Hosp / HD	Conduct conference call with hospital client to review Town Hall data and flow.
13	March 5, 2020 (5:30pm to 7pm)	VVV	Conduct CHNA Town Hall from 5:30-7pm at the MTC Atrium at William Penn University (319 R Ave. West Oskaloosa IA 52577). Review and discuss basic health data and rank health needs.
14	On or before 4/2/2020	VVV	Complete analysis. Release draft one and seek feedback from leaders at hospital client.
15	On or before 4/30/2020	VVV	Produce and release final CHNA report. Hospital client will post CHNA online.
16	TBD	Hosp / HD	Conduct hospital client Implementation Plan PSA leadership meeting.
17	30 days prior to end of hospital fiscal year	Hosp / HD	Hold board meetings to discuss CHNA needs, create and adopt an Implementation Plan. Communicate CHNA plan to community.

To meet IRS aligned CHNA requirements and meet Public Health accreditation criteria stated earlier, a four-phase methodology was followed:

### **Phase I—Discovery:**

Conduct a 30-minute conference call with the CHNA county health department and hospital clients. Review / confirm CHNA calendar of events, explain / coach clients to complete required participant database and schedule / organize all Phase II activities.

### **Phase II—Qualify Community Need:**

A) Conduct secondary research to uncover the following historical community health status for the primary service area. Use Iowa Hospital Association (IHA), Vital Statistics, Robert Wood Johnson Foundation: County Health Rankings, etc. to document current state of county health organized as follows:

<b>TAB 1. Demographic Profile</b>
<b>TAB 2. Economic/Business Profile</b>
<b>TAB 3. Educational Profile</b>
<b>TAB 4. Maternal and Infant Health Profile</b>
<b>TAB 5. Hospitalization / Providers Profile</b>
<b>TAB 6. Behavioral Health Profile</b>
<b>TAB 7. Risk Indicators &amp; Factors</b>
<b>TAB 8. Uninsured Profile</b>
<b>TAB 9. Mortality Profile</b>
<b>TAB 10. Preventative Quality Measures</b>

B) Gather primary research (stakeholder feedback) to uncover public health needs, practices and perceptions for primary service areas.

### **Phase III—Quantify Community Need:**

Conduct a 90-minute town hall meeting with required community primary service area residents. At each town hall meeting, CHNA secondary data will be reviewed, facilitated group discussion will occur and a group ranking activity to determine the most important community health needs was administered.

### **Phase IV—Complete Data Analysis and Create Comprehensive Community Health Needs Assessment:**

Post CHNA report findings to meet both PHAB and IRS CHNA criteria.

After consideration of CHNA stakeholders (sponsoring county health department and hospital), the CHNA Option C was selected with the following project schedule:

Phase I: Discovery.....	Dec 2019
Phase II: Secondary / Primary Research.....	Jan-Feb 2020
Phase III: Town Hall Meeting.....	Mar 5 <sup>th</sup> , 2020
Phase IV: Prepare / Release CHNA report.....	Apr 2020

**Detail CHNA Development Steps Include:**

<b>Development Steps to Create Comprehensive Community Health Needs Assessment</b>	
<b>Step # 1 Commitment</b>	<i>Determine interest level of area healthcare leaders (Hospital, Health Dept., Mental Health Centers, schools, churches, physicians etc.), prepare project quote.</i>
<b>Step # 2 Planning</b>	<i>Prepare brief CHNA Project Work Calendar - list goals, objectives, purpose, outcome, roles, community involvement, etc. Hold community kick-off meeting.</i>
<b>Step # 3 Secondary Research</b>	<i>Collect and report community health published facts. Gather data health practice data from published secondary research sources (i.e. census, county health records, behavioral risk factors surveillance, etc.)</i>
<b>Step # 4a Primary Research - Town Hall prep</b>	<i>Collect community opinions. (quantitative research). Gather stakeholders / community opinions regarding community health needs and healthcare practices.</i>
<b>Step # 4b Primary Research - Conduct Town Hall</b>	<i>Conduct "Conversation with Community" Town Hall (qualitative research). Review secondary &amp; primary data findings. Facilitate community conversation to build consensus; discuss opinions / identify health needs.</i>
<b>Steps # 5 Reporting</b>	<i>Prepare and present comprehensive CHNA report (to community leaders), facilitate development of CHNA Implementation Plan (actions to improve health) . (Note: formal report will follow IRS Notice 2011-52 regs &amp; PHAB requirements.)</i>
VVV Consultants, LLC Olathe, KS (913) 302-7264	

## Overview of Town Hall Community Priority Setting Process

Each community has a wealth of expertise to be tapped for CHNA development. For this reason, a town hall is the perfect forum to gather community insight and provide an atmosphere to objectively consensus build and prioritize county health issues.

All Town Hall priority-setting and scoring processes involve the input of key stakeholders in attendance. Individuals and organizations attending the Town Halls were critically important to the success of the CHNA. The following list outlines partners invited to Town Hall: local hospital, public health community, mental health community, free clinics, community-based clinics, service providers, local residents, community leaders, opinion leaders, school leaders, business leaders, local government, faith-based organizations and persons (or organizations serving them), people with chronic conditions, uninsured community members, low income residents and minority groups.


Mahaska County, IA town hall meeting was held on Thursday, March 5<sup>th</sup>, 2020 from 5:30 p.m. to 7:00 p.m. at the MTC Atrium at William Penn University (319 R Ave. West Oskaloosa IA 52577). Vince Vandehaar facilitated this 1 ½ hour session with thirty-nine (39) attendees. (Note: a detailed roster of Town Hall attendees is listed in Section V a).

The following Town Hall agenda was conducted:

1. Welcome & Introductions
2. Review Purpose for the CHNA Town Hall & Process Roles
3. Present / Review of Historical County Health Indicators (10 TABS)
4. Facilitate Town Hall participant discussion of data (probe health strengths / concerns). Reflect on size and seriousness of any health concerns cited and discuss current community health strengths.
5. Engage Town Hall participants to rank health needs (using 4 dots to cast votes on priority issues). Tally & rank top community health concerns cited.
6. Close meeting by reflecting on the health needs / community voting results. Inform participants on “next steps.”

At the end of each Town Hall session, VVV encouraged all community members to continue to contribute ideas to both hospital / health department leaders via e-mail or personal conversations. NOTE: To review detail Town Hall discussion content, please turn to Section V for detailed notes of session and activity card content reporting strengths & items to change or improve.

**Community Health Needs Assessment  
Town Hall Meeting – on behalf of  
Mahaska Health Partnership  
Mahaska County, IA**



**VVV Consultants LLC**

Olathe, Kansas 66061  
VVV@VandehaarMarketing.com  
913-302-7264

1

**Community Health Needs Assessment (CHNA)  
Town Hall Discussion Agenda**

- I. Opening / Introductions (10 mins)
- II. Review CHNA Purpose and Process (10 mins)
- III. Review Current County “Health Status”
  - Secondary Data by 10 TAB Categories
  - Review Community Feedback Research (35 mins)
- IV. Collect Community Health Perspectives
  - Hold Community Voting Activity
  - Determine Most Important Health Areas (30 mins)
- v. Close / Next Steps (5 mins)

2

**I. Introduction:**  
Background and Experience



**Vince Vandehaar, MBA**  
VVV Consultants LLC – Principal Home Town: Bondurant, IA  
Olathe, KS 913 302-7264

- > Professional Consulting Services: Strategic Planning, Marketing Management, Business Research & Development
- > Focus: Strategy, Research, Deployment
- > 30+ years of experience with Tillinghast, BCBSKC, Saint Luke’s

**Adjunct Full Professor - Marketing & MHA 31+ years**

- > Avila University
- > Webster University

**Tessa Taylor, BBA BA – Lead Consultant**

- > University of Wisconsin-Whitewater: AMA Chapter President (2 years)
- > AMAKC Healthcare SIG Co-Chair, KCHC Board Member
- > KAHCC Member
- > Mary Kay Independent Beauty Consultant



3

**Town Hall Participation (You)**

- ALL attendees welcome to share
  - Parking Lot
- There are no right or wrong answers
- Only one person speaks at a time
- Please give truthful responses
- Have a little fun along the way

4

## I. Introductions: A Conversation with the Community

Community members and organizations invited to CHNA Town Hall

**Consumers:** Uninsured/underinsured people, Members of at-risk populations, Parents, caregivers and other consumers of health care in the community, and Consumer advocates.

**Community leaders and groups:** The hospital organization's board members, Local clergy and congregational leaders, Presidents or chairs of civic or service clubs -- Chamber of Commerce, veterans' organizations, Lions, Rotary, etc., Representatives from businesses -- owners/CEO's of large businesses (local or large corporations with local branches.), Business people & merchants (e.g., who sell tobacco, alcohol, or other drugs), Representatives from organized labor, Political, appointed and elected officials, Foundations, United Way organizations. And other "community leaders."

**Public and other organizations:** Public health officials, Directors or staff of health and human service organizations, City/Community planners and development officials, Individuals with business and economic development experience, Welfare and social service agency staff, Housing advocates - administrators of housing programs: homeless shelters, low-income-family housing and senior housing, Education officials and staff - school superintendents, principals and teachers, Public safety officials, Staff from state and area agencies on aging, Law enforcement agencies - Chiefs of police, Local colleges and universities, Coalitions working on health or other issues.

**Other providers:** Physicians, Leaders in other not-for-profit health care organizations, such as hospitals, clinics, nursing homes and home-based and community-based services, Leaders from Catholic Charities and other faith-based service providers, Mental health providers, Oral health providers, Health insurers, Parish and congregational nursing programs, Other health professionals

5

## II. Review CHNA Definition

- A Community Health Needs Assessment (CHNA) is a systematic collection, assembly, analysis, and dissemination of information about the health of the community. (NOTE: Some the data has already been collected / published by Local, State and Federal public health organizations. Some data will be collected today.)
- A CHNA's role is to identify factors that affect the health of a population and determine the availability of resources to adequately address those factors.

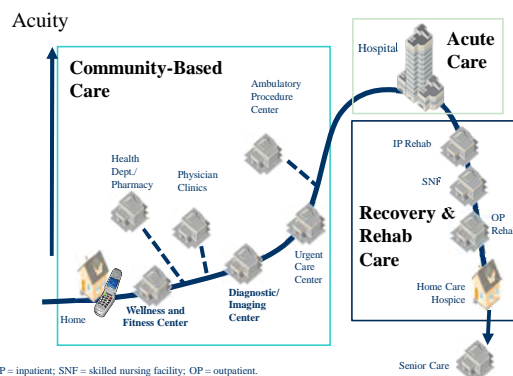
6

## Purpose—Why Conduct a CHNA?

- To determine health-related trends and issues of the community
- To understand / evaluate health delivery programs in place.
- To meet Federal requirements -- both local hospital and health department
- To develop strategies to address unmet health needs (4-6 weeks after Town Hall)

7

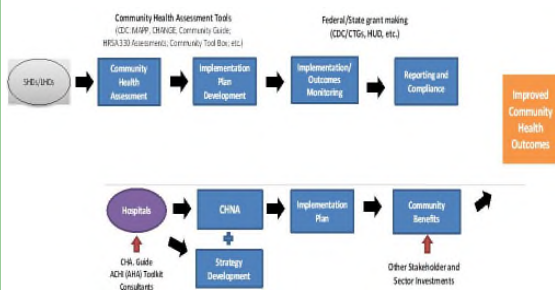
## Future System of Care—Sg2



8



## Community Health Needs Assessment Joint Process: Hospital & Local Health Department



9

## II. IRS Hospital CHNA Written Report Documentation

- a description of the community served
- a description of the CHNA process
- the identity of any and all organizations and third parties which collaborated to assist with the CHNA
- a description of how the organization considered the input of persons representing the community (e.g., through meetings, focus groups, interviews, etc.), who those persons are, and their qualifications
- a prioritized description of all of the community needs identified by the CHNA and
- a description of the existing health care facilities and other resources within the community available to meet the needs identified through the CHNA

10

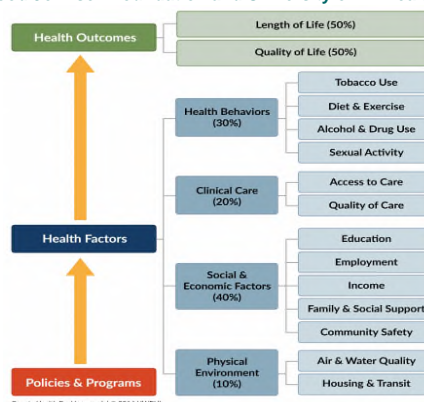
## III. Review Current County Health Status: Secondary Data by 10 Tab Categories & State Rankings

Trends: Good Same Poor

TAB 1. Demographic Profile
TAB 2. Economic/Business Profile
TAB 3. Educational Profile
TAB 4. Maternal and Infant Health Profile
TAB 5. Hospitalization / Providers Profile
TAB 6. Behavioral Health Profile
TAB 7. Risk Indicators & Factors
TAB 8. Uninsured Profile
TAB 9. Mortality Profile
TAB 10. Preventative Quality Measures

11

## County Health Rankings - Robert Wood Johnson Foundation and University of WI Health Institute



12

1. Physical Environment (10%)			2b. Social and Economic Environment (40%)		
Focus Area	Measure	Description	Focus Area	Measure	Description
Air and water quality (5%)	Air pollution particulate matter	The average daily measure of fine particulate matter in micrograms per cubic meter (PM2.5) in a county	Community safety (5%)	Violent crime	Violent crime rate per 100,000 population
	Drinking water sanitation	Percent of population potentially exposed to water exceeding a violation limit during the past year		Injury deaths	Injury mortality per 100,000
	Housing and transit (5%)	Housing health problems	Percent of households with at least 1 of 4 housing problems: overcrowding, high housing costs, or lack of kitchen or plumbing facilities	3. Health Outcomes (30%)	
2a. Clinical Care (20%)			Health Behaviors		
Focus Area	Measure	Description	Focus Area	Measure	Description
Access to care (10%)	Uninsured	Percent of population under age 65 without health insurance	Tobacco use, Diet and Exercise (10%)	Adult smoking	Percent of adults that report smoking >= 100
	Primary care physicians	Ratio of population to primary care physicians		Adult obesity	Percent of adults that report a BMI >= 30
	Dentists	Ratio of population to dentists	Food environment index	Physical inactivity	Percent of adults aged 20 and over reporting no access to facilities for physical activity
Quality of care (10%)	Mental health providers	Ratio of population to mental health providers		Excessive drinking	Single plus heavy drinking
	Preventable hospital stays	Hospitalization rate for ambulatory-care sensitive conditions per 1,000 Medicare enrollees	Alcohol and drug use (5%)	Alcohol-impaired driving deaths	Percent of driving deaths with alcohol involvement
	Diabetic screening	Percent of diabetic Medicare enrollees that receive public screening		Sexual activity (5%)	Chlamydia rate per 100,000 population
Mammography screening	Percent of female Medicare enrollees that receive mammography screening	Teen births	Teen birth rate per 1,000 female population, ages 15-19	Morbidity / Mortality	
2b. Social and Economic Environment (40%)			4. Length of life (10%)		
Focus Area	Measure	Description	Focus Area		Measure
Education (10%)	High school graduation	Percent of ninth grade cohort that graduates in 4 years	Quality of life (5%)	Poor or fair health	Percent of adults reporting fair or poor health (age-adjusted)
	Some college	Percent of adults aged 25-44 years with some post-secondary education		Poor physical health days	Average number of physically unhealthy days reported in past 30 days (age-adjusted)
Employment (10%)	Unemployment	Percent of population age 16+ unemployed but seeking work	Low birthweight	Poor mental health days	Average number of mentally unhealthy days reported in past 30 days (age-adjusted)
	Children in poverty	Percent of children under age 18 in poverty		Premature death	Years of potential life lost before age 75 per 100,000 population (age-adjusted)
Family and social support (5%)	Inadequate social support	Percent of adults without social/emotional support	Length of life (5%)	Premature death	Years of potential life lost before age 75 per 100,000 population (age-adjusted)
	Children in single-parent households	Percent of children that live in household headed by single parent			

13

## IV. Collect Community Health Perspectives

### Ask your opinion. Your thoughts?

- Today:** What are the *strengths* of our community that contribute to health? (White card)
- Today:** Are there healthcare services in your community / neighborhood that you feel *need to be improved and / or changed*? (Color card)
- Tomorrow:** What is occurring or might occur that would affect the "health of our community?"

14

## Have We Forgotten Anything?

A. Aging Services	M. Hospice
B. Chronic Pain Management	N. Hospital Services
C. Dental Care/Oral Health	O. Maternal, Infant & Child Health
D. Developmental Disabilities	P. Nutrition
E. Domestic Violence,	R. Pharmacy Services
F. Early Detection & Screening	S. Primary Health Care
G. Environmental Health	T. Public Health
H. Exercise	U. School Health
I. Family Planning	V. Social Services
J. Food Safety	W. Specialty Medical Care Clinics
K. Health Care Coverage	X. Substance Abuse
L. Health Education	Y. Transportation
M. Home Health	Z. Other _____

15

## Community Health Needs Assessment

### Questions; Next Steps?

VVV Consultants LLC  
601 N Mahaffie  
Olathe, KS 66061

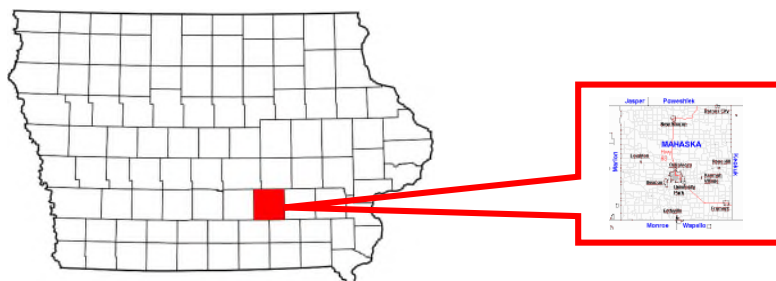
TET@VandehaarMarketing.com  
VVV@VandehaarMarketing.com  
(913) 302-7264

16

## II. Methodology

### d) Community Profile (A Description of Community Served)

#### Mahaska County, Iowa Community Profile



The population of Mahaska County was estimated to be 22,385 citizens in 2019 and a population density of 39 persons per square mile. Mahaska County's major cities are Barnes City, Beacon, Eddyville, Fremont, Keomah Village, Leighton, New Sharon, Oskaloosa, Rose Hill and University Park.

#### **Mahaska County (IA): Public Airports<sup>1</sup>**

Name	USGS Topo Map
Brownsberger Airport	Johnstown
Clinton Regional Airport	Gaines
Ferros Ranch-Aero	Clinton North
George Bud Church Memorial Hospital Heliport	Clinton North

#### **Mahaska County (IA): Public Schools<sup>2</sup>**

Name	Address	Phone	Levels
North Mahaska Elementary	2163 135th St New Sharon, IA 50207	641-637-4041	PK-6
North Mahaska Jr-Sr High	2163 135th St New Sharon, IA 50207	641-637-4187	7-12
Oskaloosa Elementary	1801 Orchard Ave Oskaloosa, IA 52577	641-673-8092	K-5
Oskaloosa High	1816 N 3rd Extension Oskaloosa, IA 52577	641-673-3407	9-12
Oskaloosa Middle	1704 N 3rd St Oskaloosa, IA 52577	641-673-8308	6-8
Webster Building	508 S 7th Oskaloosa, IA 52577	641-673-8092	PK

<sup>1</sup> <https://iowa.hometownlocator.com/features/cultural,class,airport,scfips,19123.cfm>

<sup>2</sup> <https://iowa.hometownlocator.com/ia/mahaska/>

ERSI Demographics - Mahaska Co (IA)										
Zip	Name	ST	County	Population			Households			Per Capita
				YR 2018	YR 2023	Chg.	YR 2018	YR 2023	Size	Inc 18
50027	Barnes City	IA	MAHASKA	282	278	-1.4%	136	134	2	\$40,215
50143	Leighton	IA	MAHASKA	567	549	-3.2%	228	220	2	\$28,669
50207	New Sharon	IA	MAHASKA	2602	2601	0.0%	1029	1028	3	\$29,611
52534	Beacon	IA	MAHASKA	602	626	4.0%	259	269	2	\$28,492
52543	Cedar	IA	MAHASKA	241	241	0.0%	90	90	3	\$29,486
52561	Fremont	IA	MAHASKA	964	954	-1.0%	387	382	2	\$24,545
52577	Oskaloosa	IA	MAHASKA	15162	15027	-0.9%	6091	6025	2	\$23,778
52586	Rose Hill	IA	MAHASKA	536	533	-0.6%	226	224	2	\$33,949
<b>Totals</b>				<b>20,956</b>	<b>20,809</b>	<b>-0.7%</b>	<b>8,446</b>	<b>8,372</b>	<b>2</b>	<b>\$29,843</b>
Zip	Name	ST	County	Pop18 65+	Pop18 <=18	Females	White	Black	Amer. Ind.	Hisp.
50027	Barnes City	IA	MAHASKA	136	55	130	274	0	1	6
50143	Leighton	IA	MAHASKA	228	108	266	555	2	0	5
50207	New Sharon	IA	MAHASKA	1029	456	1261	2562	1	8	27
52534	Beacon	IA	MAHASKA	259	145	302	588	5	4	15
52543	Cedar	IA	MAHASKA	90	44	114	235	3	1	2
52561	Fremont	IA	MAHASKA	387	166	465	946	4	0	5
52577	Oskaloosa	IA	MAHASKA	6091	2790	7590	14059	387	68	400
52586	Rose Hill	IA	MAHASKA	226	102	252	520	5	2	7
<b>Totals</b>				<b>8,446</b>	<b>3,866</b>	<b>10,380</b>	<b>19,739</b>	<b>407</b>	<b>84</b>	<b>467</b>
<b>Percentages</b>				<b>40.3%</b>	<b>18.4%</b>	<b>49.5%</b>	<b>94.2%</b>	<b>1.9%</b>	<b>0.4%</b>	<b>2.2%</b>

# **III. Community Health Status**

---

[VVV Consultants LLC]

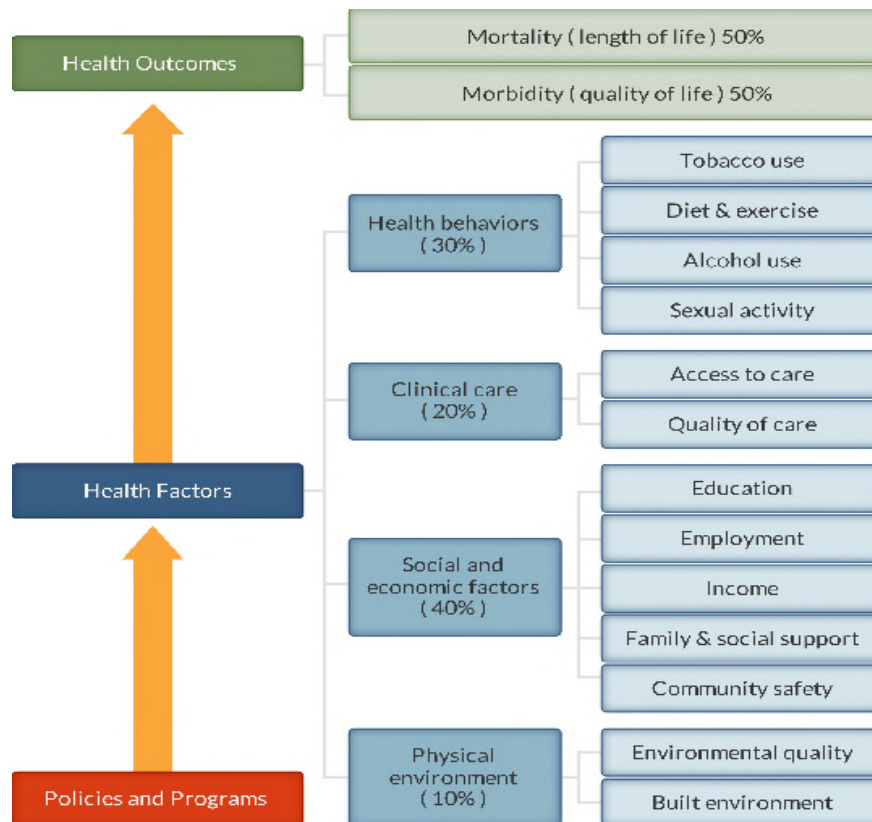
### III. Community Health Status

#### a) Historical Health Statistics- Secondary Research

##### Health Status Profile

This section of the CHNA reviews published quantitative community health indicators from public health sources and results of community primary research. To produce this profile, VVV Consultants LLC staff analyzed & trended data from multiple sources. This analysis focuses on a set of published health indicators organized by ten areas of focus (10 TABS), results from the 2019 RWJ County Health Rankings and conversations from Town Hall participants. Each table published reflects a Trend column, with GREEN denoting growing/high performance indicators, YELLOW denoting minimal change/average performance indicators and RED denoting declining/low performance indicators.

Note: The Robert Wood Johnson Foundation collaborates with the University of Wisconsin Population Health Institute to release annual *County Health Rankings*. As seen below, RWJ's model use a number of health factors to rank each county.>



County Health Rankings model ©2012 UWPHI

## National Research – Year 2019 RWJ Health Rankings:

#	IA Rankings - 99 Counties	Definitions	Mahaska Co IA	TREND	Rural IA Co Norm N=14
1	<b>Health Outcomes</b>		58		66
	Mortality	Length of Life	72		64
	Morbidity	Quality of Life	33		65
2	<b>Health Factors</b>		65		62
	Health Behaviors	Tobacco Use, Diet/Exercise, Alcohol Use, Sexual Activity	74		59
	Clinical Care	Access to care / Quality of Care	39		58
	Social & Economic Factors	Education, Employment, Income, Family/Social support, Community Safety	73		65
3	<b>Physical Environment</b>	Environmental quality	52		42
Rural IA Norm (N=14) includes the following counties: Appanoose, Marion, Decatur, Cherokee, Mahaska, Poweshiek, Marshall, Davis, Monroe, Ringgold, Clarke, Wayne, Lucas, Jasper.					
<a href="http://www.countyhealthrankings.org">http://www.countyhealthrankings.org</a> , released 2019					

## PSA Secondary Research:

When studying community health, it's important to document health data by topical areas for primary service area (PSA). Below is a summary of key findings organized by subject area.

### Tab 1 Demographic Profile

Understanding population and household make-up is vital to start CHNA evaluation.

Tab	Health Indicators	Mahaska Co IA	Trend	State of IA	Rural IA Co Norm N=14	Source
1	a Population estimates, July 1, 2018, (V2018)	22,000		3,156,145	16,323	People Quick Facts
	b Population, percent change - April 1, 2010 (estimates base) to July 1, 2018, (V2018)	-1.7%		3.6%	-1.8%	People Quick Facts
	c Population per square mile, 2010	39.2		54.5	29.7	People Quick Facts
	d Persons under 5 years, percent, July 1, 2018, (V2018)	6.6%		6.3%	6.3%	People Quick Facts
	e Persons 65 years and over, percent, July 1, 2018, (V2018)	18.3%		17.1%	20.1%	People Quick Facts
	f Female persons, percent, July 1, 2018, (V2018)	49.4%		50.2%	50.0%	People Quick Facts
	g White alone, percent, July 1, 2018, (V2018)	94.8%		90.7%	96.1%	People Quick Facts
	h Black or African American alone, percent, July 1, 2018, (V2018)	1.8%		4.0%	1.2%	People Quick Facts
	i Hispanic or Latino, percent, July 1, 2018, (V2018)	2.4%		6.2%	4.7%	People Quick Facts
	j Foreign born persons, percent, 2013-2017	2.2%		5.0%	2.9%	People Quick Facts
	k Language other than English spoken at home, percent of persons age 5 years+, 2014-2018	2.5%		7.6%	6.9%	People Quick Facts
	l Living in same house 1 year ago, percent of persons age 1 year+, 2014-2018	85.2%		84.7%	86.3%	People Quick Facts
	m Children in single-parent households, %, 2013-2017	30.0%		29.0%	27.9%	County Health Rankings
	n Total Veterans, 2014-2018	1,241		193,451	1,082	People Quick Facts

## Tab 2 Economic/Business Profile

Monetary resources will (at times) drive health “access” and self-care.

Tab	Health Indicators	Mahaska Co IA	Trend	State of IA	Rural IA Co Norm N=14	Source
2	a Per capita income in past 12 months (in 2018 dollars), 2014-2018	\$27,061		\$30,063	\$26,348	People Quick Facts
	b Persons in poverty, percent, 2015	12.4%		12.1%	12.6%	People Quick Facts
	c Total Housing units, July 1, 2018, (V2018)	9,886		1,409,650	7,462	People Quick Facts
	d Total Persons per household, 2014-2018	2.4		2.4	2.4	People Quick Facts
	e Severe housing problems, percent, 2011-2015	11.0%		12.0%	11.8%	County Health Rankings
	f Total of All firms, 2012	1,839		259,121	1,414	People Quick Facts
	g Unemployment, percent, 2017	3.3%		3.1%	3.7%	County Health Rankings
	h Food insecurity, percent, 2016	13.0%		12.0%	12.1%	County Health Rankings
	i Limited access to healthy foods, percent, 2015	8.0%		6.0%	5.7%	County Health Rankings
	j Long commute - driving alone, percent, 2013-2017	20.0%		20.0%	24.7%	County Health Rankings

## Tab 3 Educational Profile

Currently, school districts are providing on-site primary health screenings and basic care.

Tab	Health Indicators	Mahaska Co IA	Trend	State of IA	Rural IA Co Norm N=14	Source
3	a Children eligible for free or reduced price lunch, percent, 2016-2017 (ALL Schools)	46.0%		41.0%	46.1%	County Health Rankings
	b High school graduate or higher, percent of persons age 25 years+, 2014-2018	91.2%		91.8%	90.1%	People Quick Facts
	c Bachelor's degree or higher, percent of persons age 25 years+, 2014-2018	22.3%		27.7%	19.3%	People Quick Facts

Local School Districts have school nurses that provide care.

#	Health Indicators	Oskaloosa Comm School District	North Mahaska Comm School District	Eddyville-Blakesburg	Oskaloosa Christian Schools
1	Total Public School Nurses	4	1	1	0
2	School Nurse Part of IEP Team	if available	Sometimes	yes	no
3	Active School Wellness Plan	yes	Yes	yes	yes
4	VISION: # Screened / Referred to Prof / Seen by Professional	called nurse	295/13/NA	Fremont Elementary 58/15/9	Dr. Else
5	HEARING: # Screened / Referred to Prof / Seen by Professional	AEA Have a call into the AEA for data	AEA	AEA	AEA
6	ORAL HEALTH: # Screened / Referred to Prof / Seen by Professional	295/55/NA	88/18/NA	Fremont Elementary 22/5/NA	27/5/NA
7	Students Served with No Identified Chronic Health Concerns	1,218	550	97	179
8	School has Suicide Prevention Program	Yes	Yes	Yes	Stated NO but had teacher training and education.
9	Compliance on Required Vaccinations	96%	94%	97% This is Fremont school only.	90%

\*Eddyville-Blakesburg and Fremont Schools are combined (Eddyville and Blakesburg are in Wapello County. Fremont Elementary is in Mahaska County, except kindergarten class now goes to Eddyville Elementary). Data given on vision is from Eddyville Elementary only (making this data Mahaska and Wapello students mixed).

\*\*Students with health alerts in the school system for asthma, diabetes or any type of allergy.



#### Tab 4 Maternal and Infant Profile

Tracking maternal / infant care patterns are vital in understanding the foundation of family health.

Total Number of Births - Iowa							
	2013	2014	2015	2016	2017	2018	Trend
<b>Mahaska Co</b>	<b>273</b>	<b>290</b>	<b>309</b>	<b>258</b>	<b>272</b>	<b>271</b>	
<b>Iowa</b>	39,013	39,685	39,467	39,223	38,408	37,690	

[https://idph.iowa.gov/Portals/1/userfiles/68/HealthStats/vital\\_stats\\_2017-20181008.pdf](https://idph.iowa.gov/Portals/1/userfiles/68/HealthStats/vital_stats_2017-20181008.pdf)

#### Tab 4 Maternal and Infant Profile (Continued)

Tab	Health Indicators	Mahaska Co IA	Trend	State of IA	Rural IA Co Norm N=14	Source
4	a Percent of Births Where Prenatal Care began in First Trimester, 2015-2016	86.6%		78.6%	75.9%	Iowa Health Fact Book
	b Percent Premature Births by County, 2017	10.2%		7.4%	8.1%	idph.iowa.gov
	c 2 Year-Old Coverage of Individual Vaccines, 2015	67.4%		67.0%	68.4%	idph.iowa.gov
	d Percent of Births with Low Birth Weight, 2015-2016	7.1%		6.8%	7.0%	Iowa Health Fact Book
	e Percent of all Births Occurring to Teens (15-19), 2015-2016	3.9%		4.4%	5.0%	Iowa Health Fact Book
	f Percent of Out of Wedlock Births, 2015-2016	32.1%		35.1%	31.9%	Iowa Health Fact Book
	g Percent of births Where Mother Smoked During Pregnancy, 2015-2016	19.6%		18.0%	21.1%	Iowa Health Fact Book

#### Tab 5 Hospitalization/Provider Profile

Understanding provider access and disease patterns are fundamental in healthcare delivery. Listed below are several vital county statistics.

Tab	Health Indicators	Mahaska Co IA	Trend	State of IA	Rural IA Co Norm N=14	Source
5	a Primary Care (MDs / DOs only) Pop Coverage , 2016	1,235 : 1		1,390 : 1	1,768 : 1	County Health Rankings
	b Preventable Hospital Stays: Rate of hospital stays for ambulatory-care sensitive conditions per 100k Medicare enrollees (lower the better)	3,882		2,765	3,599	County Health Rankings
	c Patients Who Gave Their Hospital a Rating of 9 or 10 on a Scale from 0 (Lowest) to 10 (Highest)	72.0%		78.0%	76.1%	CMS Hospital Compare
	d Patients Who Reported Yes, They Would Definitely Recommend the Hospital	64.0%		76.0%	70.9%	CMS Hospital Compare
	e Average Time Patients Spent in the Emergency Dept. Before Seen by a Healthcare Professional (Mins)	NA		42	47	CMS Hospital Compare

**Tab 5 Hospitalization/Provider Profile (Continued)**

Market Historical Utilization		Inpatient				Outpatient			
#	Iowa Hospital Assoc	Mahaska County				Mahaska County			
		Trend	FFY18	FFY17	FFY16	Trend	FFY18	FFY17	FFY16
1	Total Discharges		2139	2168	2,215		12731	13355	13,370
2	Pediatric Age 0-17		323	341	332		1945	2252	2,310
3	Adult Medical/Surgical Age 18-44		440	463	484		4037	4386	4,592
4	Adult Medical/Surgical Age 45-64		409	381	451		3219	3235	3,134
5	Adult Medical/Surgical Age 65-74		392	393	356		1619	1648	1,513
6	Adult Medical/Surgical Age 75+		575	590	592		1911	1834	1,821
#	Iowa Hospital Assoc	MHP Only				MHP Only			
		Trend	FFY18	FFY17	FFY16	Trend	FFY18	FFY17	FFY16
1	Total Discharges / Visits		912	901	1,021		7892	8460	8,503
	Home County Share %		42.6%	41.6%	46.1%		62.0%	63.3%	63.6%
2	Pediatric Age 0-17		103	115	108		1226	1472	1,500
3	Adult Medical/Surgical Age 18-44		153	156	177		2413	2767	2,938
4	Adult Medical/Surgical Age 45-64		120	93	148		1809	1941	1,812
5	Adult Medical/Surgical Age 65-74		171	161	175		970	959	926
6	Adult Medical/Surgical Age 75+		385	376	411		1414	1321	1,327

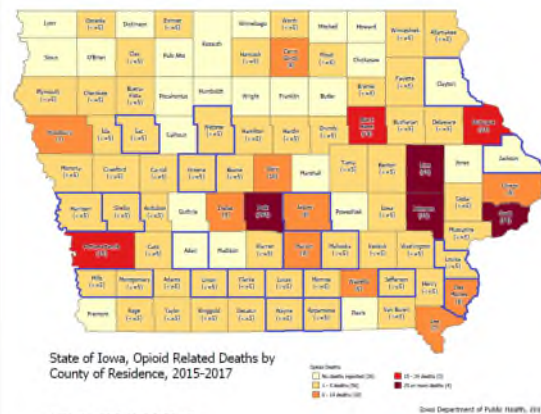
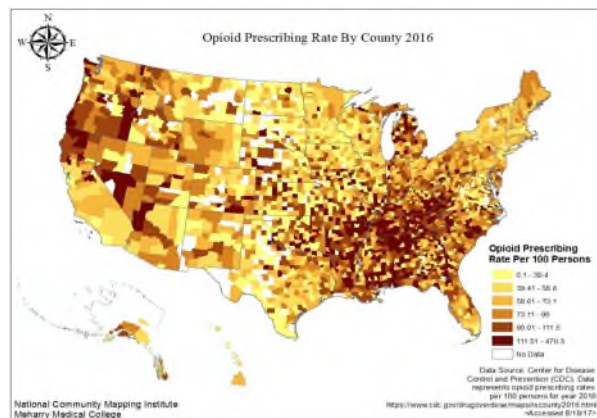
**Tab 6 Behavioral Profile**

Behavioral healthcare provides another important indicator of community health status.

Tab	Health Indicators	Mahaska Co IA	Trend	State of IA	Rural IA Co Norm N=14	Source
6	a Depression: Medicare Population, percent, 2017	16.5%		16.7%	15.6%	Centers for Medicare and Medicaid Services
	b Age-adjusted Suicide Mortality Rate per 100,000 population, 2013-2017 (lower is better)	12.6		13.3	15.3	Iowa Health Fact Book
	c Poor mental health days, 2016	3.2		3.3	3.3	County Health Rankings

**Tab 6 Behavioral Profile (Continued)**

Opioid Prescription Rate per 100 – 2017 (Mahaska Co = 69.9 IA =56.4)



**Tab 7a Risk Indicators & Factors Profile**

Knowing community health risk factors and disease patterns can aid in the understanding next steps to improve health.

Tab		Health Indicators	Mahaska Co IA	Trend	State of IA	Rural IA Co Norm N=14	Source
7a	a	Adult obesity, percent, 2015	32.0%		32.0%	33.9%	County Health Rankings
	b	Adult smoking, percent, 2016	16.0%		17.0%	15.4%	County Health Rankings
	c	Excessive drinking, percent, 2016	20.0%		22.0%	19.3%	County Health Rankings
	d	Physical inactivity, percent, 2015	24.0%		23.0%	27.9%	County Health Rankings
	e	Poor physical health days, 2016	3.0		2.9	3.1	County Health Rankings
	f	Sexually transmitted infections, rate per 100,000, 2016	573.4		415.6	282.3	County Health Rankings

**Tab 7b Risk Indicators & Factors Profile**

Tab		Health Indicators	Mahaska Co IA	Trend	State of IA	Rural IA Co Norm N=14	Source
7b	a	Hypertension: Medicare Population, 2017	47.7%		53.6%	53.3%	Centers for Medicare and Medicaid Services
	b	Hyperlipidemia: Medicare Population, 2017	29.3%		38.9%	36.3%	Centers for Medicare and Medicaid Services
	c	Heart Failure: Medicare Population, 2017	12.7%		12.8%	13.7%	Centers for Medicare and Medicaid Services
	d	Chronic Kidney Disease: Medicare Pop, 2017	18.3%		20.9%	19.8%	Centers for Medicare and Medicaid Services
	e	COPD: Medicare Population, 2017	9.4%		11.3%	11.3%	Centers for Medicare and Medicaid Services
	f	Atrial Fibrillation: Medicare Population, 2017	8.2%		8.8%	8.7%	Centers for Medicare and Medicaid Services
	g	Cancer: Medicare Population, 2017	6.3%		7.0%	7.0%	Centers for Medicare and Medicaid Services
	h	Osteoporosis: Medicare Population, 2017	4.1%		5.3%	5.3%	Centers for Medicare and Medicaid Services
	i	Asthma: Medicare Population, 2017	2.9%		6.5%	3.0%	Centers for Medicare and Medicaid Services
	j	Stroke: Medicare Population, 2017	1.9%		3.1%	2.7%	Centers for Medicare and Medicaid Services

**Tab 8a Uninsured Profile/Community Benefit**

Based on state estimations, the number of insured is documented below. Also, the amount of charity care (last three years of free care) from area providers is trended below.

Tab	Health Indicators	Mahaska Co IA	Trend	State of IA	Rural IA Co Norm N=14	Source
8 a	Uninsured, percent, 2016	4.0%		5.0%	7.0%	County Health Rankings

Source Hospital Internal Records					
	Mahaska Health Partnership	Trend	YR 2019	YR 2018	YR 2017
1	Bad Debt		\$3,707,062	\$3,233,159	\$352,340
2	Charity Care		\$71,379	\$104,729	\$72,945

MHP Public Health gives back to the community as well, listed below:

Source: Internal DOH Records				
	Mahaska County (IA) Public Health	YR 2019	YR 2018	YR 2017
1	Core Public Health	\$218,162	\$218,435	\$217,560
2	Disease Investigations	157	144	131
3	WIC Administration	\$91,744	\$91,744	NA
4	Child Care Inspections	\$27,965	\$26,884	\$27,965
5	Child Care Nurse Consultant	\$27,965	\$26,844	\$27,965
6	PHEP	\$9,716	\$3,925	\$34,162
Footnotes:				
1	County and LPHS grant dollars combined			
2	From IDSS Iowa Di data CADE (group) / Iowa Mahaska Co / Event Status: Confirmed / Annual 1/1-12/31.			
3-5	Data Provided by American Home Finding Association - Ottumwa, IA serving in Mahaska County			
6	2018 Preparedness was combined into regions Mahaska County is in Region 1 and sub region 1C. Funding is per sub region.			

### Tab 9 Mortality Profile

The leading causes of county deaths are listed below.

Iowa Top Causes of Deaths	2017	2016	2015
	# of Deaths		
1. Heart Disease	7,180	6,937	6,813
2. Cancer	6,449	6,432	6,513
3. Chronic Lower Respiratory Disease	1,939	2,006	2,011
4. Alzheimer's disease	1,597	1,415	1,339
5. Accidents	1,536	1,608	1,537
6. Stroke	1,416	1,388	1,418
7. Diabetes	918	847	1,077
8. Flu/Pneumonia	578	504	618
9. Suicide	479	451	433
10. Hypertension	399	370	390

<https://www.cdc.gov/nchs/pressroom/states/iowa/iowa.htm>

Tab	Health Indicators	Mahaska Co IA	Trend	State of IA	Rural IA Co Norm N=14	Source
9	a Life Expectancy for Males, 2014	77.8		77.5	76.4	Institute for Health Metrics and Evaluation
	b Life Expectancy for Females, 2014	82.4		81.9	81.8	Institute for Health Metrics and Evaluation
	c Age-adjusted Cancer Mortality Rate per 100,000 population, 2011-2015 (lower is better)	246.5		168.9	184.6	Iowa Health Fact Book
	d Age-adjusted Heart Disease Mortality Rate per 100,000 population, 2011-2015 (lower is better)	226.0		166.0	186.6	Iowa Health Fact Book
	e Age-adjusted Chronic Obstructive Pulmonary Disease Mortality Rate per 100,000 population, 2011-2015 (lower is better)	58.3		47.8	50.7	Iowa Health Fact Book
	f Alcohol-impaired driving deaths, percent, 2013-2017	24.0%		28.0%	21.4%	County Health Rankings

### Tab 10 Preventive Quality Measures Profile

The following table reflects future health of the county. This information also is an indicator of community awareness of preventative measures.

Tab	Health Indicators	Mahaska Co IA	Trend	State of IA	Rural IA Co Norm N=14	Source
10	a Access to exercise opportunities, percent, 2018	79.0%		83.0%	71.9%	County Health Rankings
	b Diabetes prevalence, percent, 2015, adults aged 20+ with diagnosed diabetes	12.0%		10.0%	11.1%	County Health Rankings
	c Mammography screening, percent, 2016	44.0%		49.0%	60.4%	County Health Rankings
	e Percent Annual Check-Up Visit with PCP	NA		NA	NA	TBD
	f Percent Annual Check-Up Visit with Dentist	NA		NA	NA	TBD
	g Percent Annual Check-Up Visit with Eye Doctor	NA		NA	NA	TBD

## b) Online Research- Health Status

### PSA Primary Research:

For each CHNA Wave # 3 evaluation, a community stakeholder survey has been created and administered to collect “current” healthcare information for Mahaska County, Iowa. Responses for Mahaska County online survey equals 379 residents. Below are multiple charts reviewing survey demographics.

*Chart #1 – Mahaska County, IA Online Feedback Response N=379*

<b>Community Health Needs Assessment Wave #3</b>			
For reporting purposes, are you involved in or are you a .... ?	Mahaska County, IA N=379	Trend	Rural Norms 37 Co N=7,069
Business / Merchant	11.7%		12.4%
Community Board Member	8.1%		9.5%
Case Manager / Discharge Planner	0.8%		1.4%
Clergy	1.1%		1.6%
College / University	3.6%		2.7%
Consumer Advocate	1.7%		2.0%
Dentist / Eye Doctor / Chiropractor	1.1%		0.7%
Elected Official - City/County	2.0%		2.3%
EMS / Emergency	1.7%		2.8%
Farmer / Rancher	3.4%		7.0%
Hospital / Health Dept	12.0%		20.7%
Housing / Builder	1.4%		0.7%
Insurance	2.0%		1.4%
Labor	1.4%		2.5%
Law Enforcement	0.8%		1.7%
Mental Health	2.8%		3.0%
Other Health Professional	12.3%		12.8%
Parent / Caregiver	13.4%		18.7%
Pharmacy / Clinic	0.3%		2.5%
Media (Paper/TV/Radio)	0.8%		0.6%
Senior Care	1.7%		3.2%
Teacher / School Admin	8.7%		7.8%
Veteran	0.8%		3.3%
Unemployed / Other	6.4%		8.7%
Rural 37 Norms: Appanoose IA, Atchison KS, Barton, Bates MO, Benton MO, Brown KS, Butler KS, Carroll IA, Cass MO, Cherokee IA, Clinton MO, Cowley, Decatur IA, Dickinson KS, Edwards, Ellsworth KS, Fremont IA, Furnas NE, Hays, Henry MO, Hoxie, Jasper IA, Johnson MO, Kiowa, Linn, Mahaska IA, Marion MO, Miami, Montgomery KS, Nemaha, Osborne, Page IA, Pawnee, Pike MO, Russell KS, Smith, Trego KS.			

*Chart #2 - Quality of Healthcare Delivery Community Rating*

<b>Community Health Needs Assessment Wave #3</b>			
How would you rate the "Overall Quality" of healthcare delivery in our community?	Mahaska County, IA N=379	Trend	Rural Norms 37 Co N=7,069
<b>Top Box %</b>	<b>9.5%</b>		<b>20.4%</b>
<b>Top 2 Boxes %</b>	<b>53.8%</b>		<b>64.5%</b>
<b>Very Poor</b>	<b>2.9%</b>		<b>1.4%</b>
<b>Poor</b>	<b>8.4%</b>		<b>5.8%</b>
<b>Average</b>	<b>34.3%</b>		<b>27.8%</b>
<b>Good</b>	<b>44.3%</b>		<b>44.1%</b>
<b>Very Good</b>	<b>9.5%</b>		<b>20.4%</b>

*Chart #3 – Overall Community Health Quality Trend*

<b>Community Health Needs Assessment Wave #3</b>			
When considering "overall community health quality", is it ...	Mahaska County, IA N=379	Trend	Rural Norms 37 Co N=7,069
<b>Increasing - moving up</b>	<b>31.7%</b>		<b>42.5%</b>
<b>Not really changing much</b>	<b>48.3%</b>		<b>41.4%</b>
<b>Decreasing - slipping</b>	<b>20.0%</b>		<b>12.2%</b>



**Chart #4 – Re-evaluate Past Community Health Needs Assessment Needs**

CHNA Wave #3 - Year 2020		Mahaska Co, IA N=379			
Past CHNAs health needs identified		Ongoing Problem			Pressing
#	Topic	Votes	%	Trend	RANK
1	Mental Health	224	88.5%		1
2	Obesity	147	58.1%		2
3	Providers / Visiting Specialists	89	35.2%		4
4	Access to Primary Care	88	34.8%		3
5	Smoking	87	34.4%		7
6	Knowledge of Healthcare Services	86	34.0%		5
7	Safe Rental Housing	81	32.0%		6
8	Dental Providers accepting Medicaid	77	30.4%		8
9	Sexually Transmitted Infections	58	22.9%		9
10	Out of Area Access to Care	36	14.2%		10

**Chart #5 - Community Health Needs Assessment “Causes of Poor Health”**

Community Health Needs Assessment Wave #3			
In your opinion, what are the root causes of "poor health" in our community?	Mahaska County, IA N=379	Trend	Rural Norms 37 Co
Finance & Insurance Coverage*	19.7%		16.0%
Lack of awareness of existing local programs, providers, and services	14.6%		17.4%
Limited access to mental health assistance	23.2%		17.3%
Elder assistance programs	4.8%		8.7%
Lack of health & wellness education	11.6%		11.5%
Family assistance programs	6.9%		7.2%
Chronic disease prevention	11.6%		10.5%
Case management assistance	4.3%		6.5%
Other (please specify)	3.2%		5.0%

Note: \*Finance & Insurance Coverage Norm is for 22 counties.



**Chart #6 – Community Rating of HC Delivery Services (Perceptions)**

CHNA Wave #3 - 2020	Mahaska County, IA N=379			Rural Norms 37 Co N=7,069	
How would our community rate each of the following?	Top 2 boxes	Bottom 2 boxes	Trend	Top 2 boxes	Bottom 2 boxes
Ambulance Services	86.8%	2.6%		84.9%	2.6%
Child Care	51.1%	9.4%		50.1%	11.9%
Chiropractors	78.0%	2.2%		73.4%	4.9%
Dentists	77.0%	4.2%		63.9%	13.3%
Emergency Room	57.7%	12.4%		65.6%	12.2%
Eye Doctor/Optometrist	87.3%	0.4%		75.8%	6.4%
Family Planning Services	47.5%	15.8%		40.3%	17.6%
Home Health	52.9%	12.8%		58.5%	9.9%
Hospice	89.1%	2.1%		71.8%	6.0%
Inpatient Services	68.4%	7.0%		72.5%	6.2%
Mental Health	16.5%	48.1%		23.6%	36.5%
Nursing Home	41.1%	6.3%		42.0%	18.8%
Outpatient Services	62.1%	5.3%		73.6%	4.5%
Pharmacy	85.1%	1.8%		87.2%	2.3%
Physician Clinics	63.8%	7.9%		75.8%	5.4%
Public Health	50.7%	11.8%		57.9%	8.9%
School Nurse	64.4%	3.7%		63.5%	7.6%
Specialists	56.8%	10.1%		57.6%	12.5%

**Chart #7 – Community Health Readiness**

Community Health Needs Assessment Wave #3	Bottom 2 boxes		
Community Health Readiness is vital. How would you rate each of the following? (% Poor / Very Poor)	Mahaska County, IA N=379	Trend	Rural Norms 37 Co N=7,069
Early Childhood Development Programs	7.1%		7.0%
Emergency Preparedness	4.7%		5.6%
Food and Nutrition Services/Education	10.6%		10.7%
Health Screenings (asthma, hearing, vision, scoliosis)	17.5%		13.6%
Immunization Programs	6.2%		4.5%
Obesity Prevention & Treatment	28.1%		26.7%
Prenatal / Child Health Programs	8.9%		9.0%
Sexually Transmitted Disease Testing	13.9%		9.8%
Spiritual Health Support	11.3%		12.9%
Substance Use Treatment & Education	27.5%		24.4%
Tobacco Prevention & Cessation Programs	21.5%		21.7%
Violence Prevention	23.3%		21.1%
Women's Wellness Programs	13.8%		14.0%
WIC Nutrition Program	9.7%		6.8%
Poverty / Financial Health	29.6%		25.7%

Note: The calculated Norm for Poverty / Financial Health is for 19 counties.

**Chart #8 – Healthcare Delivery “Outside our Community”**

Community Health Needs Assessment Wave #3				Specialties:	
In the past 2 years, did you or someone you know receive HC outside of our community?	Mahaska County, IA N=379	Trend	Rural Norms 37 Co N=7,069	SPS	CTS
Yes	81.4%		81.3%	OBG	24
No	13.0%		13.4%	EMER	17
I don't know	5.7%		5.2%	PRIM	17
				SURG	17
				ORTH	16
				SPEC	14
				CARD	12
				NEU	9
				DENT	8
				FP	8
				BH	7
				EYE	7

**Chart #8 – Healthcare Delivery “Outside our Community” (Continued)**

Community Health Needs Assessment Wave #3			
Are we actively working together to address community health?	Mahaska County, IA N=379	Trend	Rural Norms 37 Co N=7,069
Yes	40.0%		47.2%
No	13.9%		12.4%
I don't know	46.1%		40.0%

**Chart #9 – What Healthcare topics need to be discussed in future Town Hall Meeting**

<b>Community Health Needs Assessment Wave #3</b>			
What needs to be discussed further at our CHNA Town Hall meeting?	Mahaska County, IA N=379	Trend	Rural Norms 37 Co N=7,069
Abuse/Violence	6.2%		5.5%
Alcohol	3.7%		4.8%
Breast Feeding Friendly Workplace	1.5%		1.7%
Cancer	1.9%		3.6%
Diabetes	3.8%		4.2%
Drugs/Substance Abuse	7.5%		9.2%
Family Planning	3.0%		2.8%
Heart Disease	2.3%		2.9%
Lead Exposure	0.5%		0.8%
Mental Illness	13.5%		10.7%
Nutrition	4.1%		4.6%
Obesity	6.3%		7.4%
Environmental Health	2.4%		1.6%
Physical Exercise	5.0%		5.7%
Poverty	6.3%		6.9%
Lung Disease	0.8%		1.6%
Sexually Transmitted Diseases	3.2%		2.4%
Smoke-Free Workplace	0.8%		1.4%
Suicide	7.6%		7.3%
Teen Pregnancy	3.0%		3.1%
Tobacco Use	4.3%		3.7%
Vaccinations	2.0%		2.9%
Water Quality	2.2%		3.2%
Wellness Education	6.4%		6.0%

# **IV. Inventory of Community Health Resources**

---

[VVV Consultants LLC]

Inventory of Healthcare Services offered - MHP Service Area				
Cat	Healthcare Services Access	Hospital	Health Dept.	Other
Clinic	Primary Care	x		x
Hosp	Alzheimer Center			x
Hosp	Ambulatory Surgery Centers			
Hosp	Arthritis Treatment Center	x		
Hosp	Bariatric / Weight Control Services	x		
Hosp	Birthing / LDR / LDRP Room	x		
Hosp	Breast Cancer Services	x		
Hosp	Burn Care	x		
Hosp	Cardiac Rehabilitation	x		
Hosp	Cardiac Surgery			
Hosp	Cardiology Services	x		
Hosp	Case Management	x		x
Hosp	Chaplaincy / Pastoral Care	x		
Hosp	Chemotherapy	x		
Hosp	Colonoscopy	x		
Hosp	Crisis Prevention			x
Hosp	CT Scanner	x		
Hosp	Diagnostic Radioisotope Facility	x		
Hosp	Diagnostic / Invasive Catheterization			
Hosp	Electron Beam Computed Tomography (EBCT)			
Hosp	Enrollment Assistance	x	x	x
Hosp	Extracorporeal Shock Wave Lithotripter (ESWL)			
Hosp	Fertility Clinic			
Hosp	Full Field Digital Mammography (FFDM)	x		x
Hosp	Genetic Testing / Counseling			
Hosp	Geriatric Services	x	x	x
Hosp	Heart Services	x		
Hosp	Hemodialysis			x
Hosp	HIV / AIDS Services			
Hosp	Image-Guided Radiation Therapy (IGRT)			
Hosp	Inpatient Acute Care Services	x		
Hosp	Intensity-Modulated Radiation Therapy (IMRT) 161			
Hosp	Intensive Care Unit	x		
Hosp	Intermediate Care Unit	x		
Hosp	Interventional Cardiac Catheterization			
Hosp	Isolation Room	x		
Hosp	Kidney Services	x		x
Hosp	Liver Services	x		
Hosp	Lung Services	x		
Hosp	Magnetic Resonance Imaging (MRI)	x		
Hosp	Mammograms	x		x
Hosp	Mobile Health Services	x		
Hosp	Multi-slice Spiral Computed Tomography (<64 Slice CT)			
Hosp	Multi-slice Spiral Computed Tomography (64+ Slice CT)	x		
Hosp	Neonatal Services			
Hosp	Neurological services	x		
Hosp	Obstetrics Services	x		
Hosp	Occupational Health Services	x		
Hosp	Oncology Services	x		
Hosp	Orthopedic Services	x		
Hosp	Outpatient Surgery	x		
Hosp	Pain Management	x		
Hosp	Palliative Care Program	x		x
Hosp	Pediatric Services	x		x
Hosp	Physical Rehabilitation	x		

Inventory of Healthcare Services offered - MHP Service Area				
Cat	Healthcare Services Access	Hospital	Health Dept.	Other
Hosp	Positron Emission Tomography (PET)			
Hosp	Positron Emission Tomography / CT (PET / CT)	x		
Hosp	Psychiatric Services			x
Hosp	Radiology, Diagnostic	x		
Hosp	Radiology, Therapeutic	x		
Hosp	Reproductive Health			
Hosp	Robotic Surgery			
Hosp	Shaped Beam Radiation System 161			
Hosp	Single Photon Emission Computerized Tomography			
Hosp	Sleep Center	x		
Hosp	Social Work	x	x	x
Hosp	Sports Medicine	x		
Hosp	Stereotactic Radiosurgery	x		
Hosp	Swing Bed Services	x		
Hosp	Transplant Services			
Hosp	Trauma Center -Level IV			
Hosp	Ultrasound	x		x
Hosp	Women's Health Services	x		x
Hosp	Wound Care	x		
SR	Adult Day Care Program			x
SR	Assisted Living			x
SR	Home Health	x		x
SR	Hospice	x		x
SR	Long-term Care			x
SR	Nursing Home			x
SR	Retirement Housing			x
SR	Skilled Nursing Care	x		x
ER	Emergency Services	x		
ER	Urgent Care Center			
ER	Ambulance Services	x		x
SERV	Alcoholism-Drug Abuse Services			x
SERV	Blood Donor Center	x		
SERV	Chiropractic Services			x
SERV	Complementary Medicine Services	x	x	x
SERV	Dental Services			x
SERV	Fitness Center	x		x
SERV	Health Education Classes	x		x
SERV	Health Fair	x		x
SERV	Health Information Center	x	x	x
SERV	Health Screenings	x	x	x
SERV	Meals on Wheels			x
SERV	Nutrition Program	x	x	x
SERV	Patient Education Center	x	x	x
SERV	Support Groups	x		x
SERV	Teen Outreach Services			x
SERV	Tobacco Treatment / Cessation Program	x		x
SERV	Transportation to Health Facilities	x		x
SERV	Wellness Program	x		x

# Year 2020 - Providers Delivering Care

## Mahaska Health Partnereship (Primary Service Area)

	FTE Physicians		FTE Allied Staff
FTE Providers Working in PSA	FTE MD / DO	Visiting DR*	FTE NP / PA
<b>Primary Care:</b>			
Family Practice	4.0		7.5
Family Practice w/ OB	2.0		
Internal Medicine / Geriatrics			1.0
Obstetrics / Gynecology	1.0		
Pediatrics	1.0		
<b>Medicine Specialists:</b>			
Allergy / Immunology			1.0
Cardiology		2.0	
Dermatology			
Endocrinology			
Gastroenterology			
Oncology / Radiology		1.0	
Infectious Disease			
Nephrology		2.0	
Neurology			
Psychiatry			
Pulmonary		1.0	0.5
Rheumatology			
<b>Surgery Specialists:</b>			
General Surgery / Colon / Oral	2.0		1.0
Neurosurgery			
Ophthalmology		1.0	
Orthopedics	2.0		1.0
Otolaryngology		1.0	
Plastic / Reconstructive Surgery			
Podiatry	2.0		
Thoracic / Cardiovascular / Vascular Surgery		1.0	
Urology		1.0	
<b>Hospital Based:</b>			
Anesthesia / Pain Management			5.0
Emergency Medicine	5.0		
Radiology		1.0	
Pathology		1.0	
Hospitalist	4.0		2.0
Neonatology / Perinatology			
Physical Medicine / Rehabilitation			
Occupational Medicine			
Audiology			
Chiropractic			
Optometry			
Dental			
<b>TOTALS</b>	<b>23.0</b>	<b>12.0</b>	<b>19.0</b>

\*FTE Specialists serving the community whose office outside the PSA

## Year 2020 - Visiting Specialists to Mahaska Health Partnership

Specialty	Physician Name	Office Location	Schedule	Days per Month
Cardiology	Dr. Phillip Bear	Iowa Heart Center West 5880 University Ave, West Des Moines, IA 50266	2nd & 4th Tuesday	2
Cardiology	Dr. Matthew McCormick	Iowa Heart Center West 5880 University Ave, West Des Moines, IA 50266	1st & 3rd Tuesday	2
Ears/Nose/Throat	Dr. Joseph Whitman	Surgical Associates, LLP 122 4th Avenue East, Grinnell, IA 50112	1st, 2nd, & 3rd Friday	3
EMG (Nerve Testing)	Dr. Marvin Hurd	809 46th Street, West Des Moines, IA 50265	2nd & 4th Wednesday	2
Nephrology	Dr. Bruce Buchsbaum	Iowa Kidney Physicians - River Point 501 SW 7th St Ste A, Des Moines, IA 50309	2nd Friday	1
Nephrology	Dr. Robert Smith	Associates In Kidney Care 411 Laurel St Ste 2350, Des Moines, IA 50314	4th Friday	1
Oncology	Dr. Bradley Hiatt	Mission Cancer + Blood 1221 Pleasant St Ste 100, Des Moines, IA 50309	Every Thursday	4
Ophthalmology	Dr. Ryan Vincent	Wolfe Eye Clinic 2020 Philadelphia St, Ames, IA 50010	Monday	1
Sleep Medicine	Dr. Michael McCubbin	Broadlawns 1801 Hickman Road, Des Moines, IA 50314	1st & 3rd Friday 2nd & 4th Monday (telemed)	4
Urology	Dr. Aaron Smith	Surgical Associates, LLP 122 4th Ave East, Grinnell, IA 50112	2nd & 4th Monday	2
Vascular	Dr. Eric Scott	The Iowa Clinic - West 5950 University Ave #231, West Des Moines, IA 50266	1st Thursday	1



# **Mahaska County, Iowa**

## **Emergency Numbers**

**Police / Sheriff** 9-1-1

**Fire** 9-1-1

**Ambulance** 9-1-1

### **Police**

**Mahaska Co Sheriff** (641) 673-4322

**Oskaloosa Police Department** (641) 672-2559

### **Fire**

**Oskaloosa Fire Department** (641) 673-3541

# Mahaska County, IA Resource Directory 2016

-provided by United Way  
Of Mahaska County

## County Office

Animal Control  
641.673.3991

Assessor  
641.673.5805

Attorney  
641.673.9819

Auditor  
641.673.7148

Bicycle License (Oskaloosa)  
641.673.2557

Board of Supervisors  
641.673.3469

Country Life Healthcare INC  
641.673.4447

Central Point of Coordination  
641.672.2625

Conservation Board  
641.673.9327

Courts  
Clerk of Court Adult  
641.673.7786  
Probation Jury  
641.673.7038  
Information  
641.673.7786  
Juvenile Probation  
641.673.0419

Development/Housing  
641.673.8361

Human Services Local Office  
641.673.3496

Engineer  
641.672.2897

Environmental Services  
641.673.6371

Emergency Management  
641.672.1209

Jail Location  
641.673.2591

General Relief  
641.673.2625

GIS Coordinator  
641.673.1454

Post Office  
Fremont  
641.933.4746  
Leighton  
641.626.3107  
New Sharon  
641.637.4145  
Oskaloosa  
641.673.6547  
Mahaska Drug  
800.275.8777  
University Park  
Rose Hill  
641.632.8374  
Eddyville  
641.969.4648  
Cedar  
800.275.8777

Public Health  
641.673.3257

Recorder  
641.673.8187

Sheriff  
641.673.4322

Social Security Administration  
866.964.7394

Treasurer  
Auto Department  
641.673.4618  
Driver's License  
641.673.9521  
Tax Department  
641.673.5482

Veterans Affairs  
641.673.7727

Zoning Administrator  
641.673.7472

## Churches in Mahaska County

Assembly of God Church  
Highway 23  
641.672.2503

Barnes City United Methodist  
Barnes City, IA 50027  
515.623.3447

Beacon United Methodist  
Beacon, IA 52534  
641.673.7623

Bethel Baptist Church  
1407 A Ave W  
641.673.7623

Bethel Christian Reformed Church  
2157 230th St  
641.673.4679

Calvary Bible Church  
1411 S 11th St  
641.673.8826

Cedar United Methodist  
2802 305' Street, Cedar

Central Reformed Church  
815 2nd Ave E  
641.673.7293

Central United Methodist Church  
201 N Market St  
641.672.2564

Christian Science Church  
215 A Ave W  
641.672.2257

Jesus Christ Latter Day Saints Church  
1714 Pella Ave  
641.673.0619

College Avenue Friends Church  
912 N C St  
641.673.8357

Community of Christ  
330 N 6th St  
641.673.6474

Emmanuel Baptist Church  
416 3rd Ave W  
641.673.6371

Evangelical Church  
1513 S Market St  
641.672.2267

Faith Evangelical Methodist Church  
1004 S 18th St  
641.672.0200

Fellowship Bible Church  
1000 A Ave  
641.672.2225

First Baptist Church-American Baptist  
209 S 3rd St  
641.673.7253

First Christian Church  
119 A Ave E  
641.673.4671

First Christian Reformed Church  
815 N 11th St  
641.673.4272

First Church of the Open Bible  
509 S A St  
641.673.7136

First Pentecostal Church  
537 Spring Creek Village Ct  
641.672.2865

First Pentecostal Church  
416 2nd Ave E  
641.673.4277

First Presbyterian Church  
405 High Ave  
641.673.8879

Gateway Church of the Nazarene  
140 Gateway Dr  
641.673.3417

Good News Chapel  
603 S H St  
641.673.5370

Grace Evangelical Lutheran Church  
1718 9th Ave  
641.672.2762

Hillside Bible Church  
2352 Highway 92  
641.673.4671

Jehovah's Witnesses  
1712 S Market St  
641.673.5748

Jubilee Family Church  
401 S D St  
641.673.9852

Landmark Church of God  
311 S 5th St  
641.673.3425

New Hope Free Methodist Church  
821 8th Ave  
641.673.5562

Park Church of Christ  
1804 Burlington Rd  
641.673.4481

Saint James Episcopal Church  
207 S 3rd St  
641.673.4218

Saint John Lutheran Church  
2370 Merino Ave  
641.673.6546

Saint Mary's Catholic Church  
315 1st Ave  
641.673.6680

Saint Paul Congregational  
501 High Avenue East  
641.673.7206

Two Timbers Church of Christ  
215 A Ave West  
641.673.4569

### **ABUSE AND PREVENTION- DOMESTIC**

Child Abuse 24 Hour Crisis Hotline  
National Hotline: 1.800.422.4453  
Iowa Hotline: 1.800.362.2178

Child Abuse Reporting  
*Report child abuse to local authorities*

Mahaska County DHS  
641.673.3496

Children and Families of Iowa  
1111 University Ave  
Des Moines, IA 50314  
515.697.7949

Crisis Intervention Services  
500 High Ave West  
Oskaloosa, IA 52577  
641.673.0336 (Office)  
1.844.673.5499 (Emergency Housing Line)  
1.800.270.1620 (Sexual Assault Hotline)

Dependent Adult Abuse 24 Hour Crisis Toll-Free Hotline  
800.362.2178

Domestic Abuse Hotline  
800.842.0333 (state)  
800.799.7233 (national)

Prevent Child Abuse Iowa (PCAI)  
505 5<sup>th</sup> Ave, Suite 900  
Des Moines, IA 50309  
515.244.2200 / 800.237.1815 (24-hour toll-free hotline)

### **ABUSE AND PREVENTION- SEXUAL**

Crisis Intervention Services  
500 High Ave W  
Oskaloosa, IA 52577

641.673.0336

Sex Abuse Prevention Education Program  
712 Union St  
Pella, IA 50219  
641.628.1212 / 515.447.3383 / 888.322.6299  
(24 hour)

### **ABUSE AND PREVENTION- SUBSTANCE RELATED**

Addictions Recovery Center  
410 East Robinson  
Knoxville, IA 50311  
641.842.2813

Alcoholics Anonymous  
2626 Lincoln Ave  
Oskaloosa, IA 52577  
641.673.3763

Narcotics Anonymous  
Phone: 515.244.2277  
Alcohol-Drug Treatment Referrals  
1.206.722.3700

Capstone Behavioral Healthcare, Inc.  
306 North 3<sup>rd</sup> Ave E  
641.792.4012

Lutheran Services in Iowa  
1714 N. 4th Ave. E., Suite B  
Newton, IA 50208  
641.792.1541  
3125 Cottage Grove Ave  
Des Moines, IA 50311  
515.271.7411

Prevention Concepts, Inc.  
909 E 2<sup>nd</sup> Ave, Suite G  
Indianola, IA 50125  
515.961.8830 / 888.961.8830

Southern Iowa Economic Development  
Association (SIEDA) -Substance Abuse Services  
114 North Market St  
Oskaloosa, IA 52577  
641.673.8758

### **ASSISTANCE- CLOTHING**

Clothing Closet -The Straight House  
604 N B St  
Oskaloosa, IA 52577  
641.676.1421 / 641.672.2503

Helping Hands  
117 E Main St  
Knoxville, IA 50138  
641.842.693

Mahaska County Outreach  
114 N 1<sup>st</sup> St  
Oskaloosa, IA 52577  
641.672.2908

Pella Clothing Bank  
712 Union St (use west front doors)  
Pella, IA 50219  
641.628.4571

Pella Community Thrift Shop  
419 E Oskaloosa St  
Pella, IA 50219  
641.628.3333

New Hope Community Center  
P.O. Box 565  
308 5<sup>th</sup> Ave W  
Oskaloosa, IA 52577  
641.676.1601

#### **ASSISTANCE-FINANCIAL/BASIC NEEDS**

Child Care Assistance (CCA)  
410 S 11<sup>th</sup> St  
Oskaloosa, IA 52577  
641.673.3496

Self Help and Resource Exchange (SHARE)  
Iowa  
P.O. Box 328  
1102 S 7<sup>th</sup> St  
Oskaloosa, IA 52577  
641.673.4000

Love in the Name of Christ (Love INC)  
500 High Ave W  
Oskaloosa, IA 52577  
641.676.3750

Mahaska County Community Services and  
General Relief  
301 1<sup>st</sup> Ave E  
Oskaloosa, IA 52577  
641.672.2625

Mahaska County Homelessness Coalition  
500 High Ave West  
Oskaloosa, IA 52577  
641.670.0717

Iowa State University Extension and Outreach –  
Mahaska County  
212 North I St  
Oskaloosa, IA 52577  
641.673.5841

Salvation Army  
641.295.0942

Southern Central Iowa Center for Independent  
Living (SCICL)

117 1<sup>st</sup> Ave W  
Oskaloosa, IA 52577  
641.672.1867

Southern Iowa Economic Development  
Association (SIEDA)  
Neighborhood Resource Center  
114 North Market St  
Oskaloosa, IA 52577  
641.673.8758

StandUp Wireless  
Website: <http://www.standupwireless.com/>

#### **ASSISTANCE- FOOD**

Ecumenical Food Cupboard  
205 S D St  
Oskaloosa, IA 52577  
641.676.4031

Summer Lunch Program  
201 N Market St  
Oskaloosa, IA 52577  
641.660.5264

Self Help and Resource Exchange  
PO Box 328  
1102 S 7<sup>th</sup> St  
Oskaloosa, IA 52577  
641.673.4000

Food Bank of Southern Iowa  
P.O. Box 1294  
705 West Main St.  
Ottumwa, IA 52501  
641.682.3403

Free and Reduced School Lunches  
Eddyville-Blakesburg: 641.969.4288  
Fremont Elementary: 641.933.4211  
North Mahaska Schools: 641.637.4187  
Oskaloosa School District: 641.673.3407 ext.  
1823

#### **CHILD CARE-AFTER SCHOOL CARE & SUMMER PROGRAMS**

After School Fun Club  
1801 Orchard Avenue  
Oskaloosa, IA 52577  
641.673.841

New Hope Community Center  
PO Box 565  
414 N 3<sup>rd</sup> St  
Oskaloosa, IA 52577  
641.673.8411

Mahaska County YMCA  
414 N 3<sup>rd</sup> St

Oskaloosa, IA 52577  
641.673.8411

**CHILD CARE- CHILD CARE  
CENTERS/PRESCHOOLS**

Eddyville Childcare & Family  
702 Vance St  
Eddyville, IA 52553  
641.969.4343

Kids' Corner Childcare (YMCA)  
2300 8th Avenue E  
University Park, IA 52595  
641.673.7409

Little Creations Preschool  
201 N Market St  
Oskaloosa, IA 52577  
641.672.2564

Mahaska County YMCA  
414 N 3<sup>rd</sup> St  
Oskaloosa, IA 52577  
641.672.2564

New Sharon Child Care and Preschool  
2163 135<sup>th</sup> St  
New Sharon, IA 50207  
641.637.2295

Oskaloosa Preschool and KinderPrep  
508 S 7<sup>th</sup> St  
Oskaloosa, IA 52577  
Preschool: 641.676.1632  
KinderPrep: 641.676.3783

Peek-A-Boo Point Day Care  
P.O. Box 567 604 N B St  
Oskaloosa, IA 52577  
641.676.1421

SIEDA Head Start  
114 N Market St  
Oskaloosa, IA 52577  
641.673.5958

SONshine Preschool  
726 N E St  
Oskaloosa, IA 52577  
641.673.9472

TLC Day Care and Learning Center  
211 N C St  
Oskaloosa, IA 52577  
641.673.0588

**COMMUNITY GROUPS**

Oskaloosa Area Chamber and Development  
Group  
124 N Market St

Oskaloosa, IA 52577  
641.672.2591

**COUNSELING**

Bethany Christian Services  
617 Franklin St #201  
Pella, IA 50219  
641.628.3247/ 888.791.3981

Birthright of Iowa  
613 South B St  
Oskaloosa, IA 52577  
641.673.9722

Boys Town National Hotline  
800.448.3000

Consumer Credit Counseling  
1003 West 4<sup>th</sup> St  
Waterloo, IA 50702  
319.234.5472

Consumer Credit of Des Moines  
6129 Southwest 63<sup>rd</sup> St  
Des Moines, IA 50321  
877.978.5742

Crossroads of Pella  
712 Union St. Rm 301  
Pella, IA 50219  
641.628.1212

Des Moines Pastoral Counseling Center  
8553 Urbandale Avenue  
Urbandale, IA 50322  
515.274.4006

First Resources  
1907 17<sup>th</sup> E  
Oskaloosa, IA 52577

Integrative Counseling Solutions  
909 West Pleasant St  
Knoxville, IA 50138  
641.842.4357

Home Health - Home Hospice Care  
1229 C Ave E  
Oskaloosa, IA 52577  
641.672.3260 (Hospice House)

Southern Iowa Mental Health  
1229 Ave E  
Oskaloosa, IA 52577  
641.672.3100

Orchard Place  
2116 Grand Ave  
Des Moines, IA 50312  
515.246.3514

Pathways of Pella  
703 Main St  
Pella, IA 50219  
641.628.4827/ 800.395.4357 (after hours)

Pine Rest Christian Mental Health Services  
2611 Washington St  
Pella, IA 50219  
641.628.9599 / 800.274.9278

Planned Parenthood Knoxville Center  
909 W Pleasant St  
Knoxville, IA 50138  
641.842.5460

Teen Pregnancy and Parenting Program  
House of Mercy  
1409 Clark St  
Des Moines, IA 50314  
515.643.6500

### **DISABILITY SERVICES**

Christian Opportunity Center  
110 B Ave  
Oskaloosa, IA 52577  
641.673.3459

Great Prairie Area Education Agency  
2814 N Court St  
Ottumwa, IA 52501  
Phone: 641.682.8591  
800.622.0027

Imagine the Possibilities  
P.O. Box 1092  
1701 S 3' Ave E, Suite 6  
Oskaloosa, IA 52577  
641.673.3459

Iowa Compass  
100 Hawkins Drive, # 295  
Iowa City, IA 52242  
800.779.2001

Iowa Vocational Rehabilitation Services  
16260 Truman St, Suite 4  
Ottumwa, IA 52501  
641.682.7569

South Central Iowa Center for Independent Living  
(SCICL)  
117 1' Ave W  
Oskaloosa, IA 52577  
641.672.1867

TENCO Industries  
117 N. 1st Street  
Oskaloosa, IA 52577  
641.569.9138

### **DISASTER ASSISTANCE**

American Red Cross, Southern Prairie Chapter  
408 E. Main Street  
Ottumwa, IA 52501  
641.682.4571

Emergency Management of Mahaska County  
214 High Ave E  
Oskaloosa, IA 52577  
641.672.1209

Love in the Name of Christ (Love INC)  
P.O. Box 213  
500 High Ave W  
Oskaloosa, IA 52577  
641.676.3750

Mahaska County E911 Center  
214 High Ave E  
Oskaloosa, IA 52577  
641.673.0347

Police Department  
214 Hgh Ave E  
Oskaloosa, IA 52577  
641.673.3201

Salvation Army  
P.O. Box 487  
Oskaloosa, IA 52577  
641.295.0942

Sheriff's Department  
214 High Ave E #1  
Oskaloosa, IA 52577  
641.673.4322

### **EDUCATION-FAMILY BASED**

Children and Families of Iowa Childcare  
Development Center  
1111 University Ave  
Des Moines, IA 50314  
515.288.1981

Children in the Middle Classes- Family  
Development Associates  
P.O. Box 11231  
Cedar Rapids, IA 525410  
800.261.5097

Families First of Pella  
210 University Ave  
Pella, IA 50219  
641.628.8331

MHP - Birthing Center Classes  
641.672.3170

NEST Program  
P.O. Box 565

308 5<sup>th</sup> West St  
Oskaloosa, IA 52577  
641.676.1601

SIEDA Parents as Teachers  
114 N Market St  
Oskaloosa, IA 52577  
641.673.8758

### **EDUCATION-COLLEGE**

Indian Hills Community College  
Ottumwa  
525 Grandview Ave  
Ottumwa, IA 52501  
800.726.2585

Central College  
812 University Ave  
Pella, IA 50219  
641.628.9000/ 877.462.3687

William Penn University  
201 Trueblood Ave  
Oskaloosa, IA 52577  
641.673.1012

### **EDUCATION- ELEMENTARY, MIDDLE, AND HIGH SCHOOL**

Oskaloosa Elementary  
1801 Orchard Ave  
Oskaloosa, IA 52577  
641.673.8092

Oskaloosa Middle School  
1704 N 3<sup>rd</sup> St  
Oskaloosa, IA 52577  
641.673.8308

Oskaloosa High School  
1816 N 3<sup>rd</sup> St  
Oskaloosa, IA 52577  
641.673.3407

Oskaloosa Christian School (K-8th)  
726 N E St  
Oskaloosa, IA 52577  
641.672.2174

Eddyville Elementary School  
702 Vance St  
Eddyville, IA 52553  
641.969.4681

Blakesburg Elementary School  
407 Wilson St  
Blakesburg, IA 52536  
641.938.2203

Fremont Elementary School  
525 E. Main St

Fremont, IA 52561  
641.933.4211

Eddyville-Blakesburg-Fremont Jr-Sr School  
1301 Berdan St  
Eddyville, IA 52553  
641.969.4288

North Mahaska Community School District  
P.O. Box 89  
2163 135<sup>th</sup> St  
New Sharon, IA 50207  
641.637.4187 (HS) / 641.637.2657 (Elementary)

### **EDUCATION- SPECIAL SERVICES**

American Red Cross, Southern Prairie Chapter  
408 E. Main Street  
Ottumwa, IA 52501  
641.682.4571

Apples of Gold Center of Learning  
604 Liberty St # 123  
Pella, IA 50219  
641.620.1160

Educational Talent Search (ETS - pre-college)  
Central College  
812 University Ave  
Campus Box 0181  
Pella, IA 50219  
641.628.5294

Indian Hills Community College Small Business  
Development Center  
626 Indian Hills Drive  
Ottumwa, IA 52501  
641.683.5127

Mahaska County Extension Services (ISU)  
212 North I St  
Oskaloosa, IA 52577  
641.673.5841

Southern Central Iowa Center for Independent  
Living (SCICL)  
117 1<sup>st</sup> Ave W  
Oskaloosa, IA 52577  
641.672.1867

Upward Bound (Pre-College)  
812 University Ave, Box 0182  
Pella, IA 50219  
641.628.7677

### **ELECTED OFFICIALS**

Mahaska County Board of Supervisors  
Court House  
106 S 1<sup>st</sup> St  
Oskaloosa, IA 52577  
641.673.3469



U.S. Representative  
300 E Locust St, Suite 320  
Des Moines, IA 50309  
515.282.1909

U.S. Senator  
733 Federal Building  
210 Walnut St  
Des Moines, IA 50309  
515.288.1145

### **EMPLOYMENT SERVICES**

Experience Works, Inc.  
2973 100th Street, Ste. 8  
Urbandale, IA 50322  
515.243.2430

Iowa Comprehensive Human Services  
1111 19<sup>th</sup> St, #260  
Des Moines IA 50316  
515.245.7800

Iowa Job Corp Admission Office  
15229 Truman Street  
Ottumwa, IA 52501  
641.682.2000

Iowa Workforce Development Center  
408 S 11<sup>th</sup> St  
Oskaloosa, IA 52577  
641.673.9494

Promoting Independence and Self Sufficiency  
through Employment (PROMISE) Jobs  
15260 Truman St  
Ottumwa, IA 51501  
641.684.5401

### **GROUP HOMES**

Imagine the Possibilities  
P.O. Box 1092  
1701 3<sup>rd</sup> Ave E, Suite 6  
Oskaloosa, IA 52577  
641.673.3459

### **HEALTH CARE SERVICES AND ASSISTANCE**

American Cancer Society  
1717 Ingersoll Ave #111  
Des Moines, IA 50309  
800.227.2345 (toll free)

Ask-A-Nurse  
844.630.9822

Good Samaritan Free Clinic  
Pella First Reformed Church  
603 Broadway Ave  
Pella, IA 50219  
641.621.1606

Hawk-I (Healthy & Well Kids in Iowa)  
1225 C Ave E  
Oskaloosa, IA 52577  
1.800.257.8563

Heartland Pregnancy Center  
101 S Market St, # 302  
Ottumwa, IA 52501  
641.683.3030

Planned Parenthood Knoxville Center  
909 W Pleasant St  
Knoxville, IA 50138  
877.811.7526

River Hills Community Health Center  
201 S Market St  
Ottumwa, IA 52501  
641.683.5773

Southern Iowa Family Planning  
Medical Group  
1225 C Ave E  
Oskaloosa, IA 52577  
641.682.9955

### **HEALTH CARE PROVIDERS**

Mahaska Health Partnership (MHP)  
1229 C Ave E  
Oskaloosa, IA 52577  
641.673.3100

New Sharon Medical Center  
112 S Main Street  
New Sharon, IA 50207  
641.637.2651

Ottumwa Regional Health Center 1001  
Pennsylvania Ave  
Ottumwa, IA 52501  
641.684.2300

University of Iowa Hospitals and Clinics  
200 Hawkins Drive  
Iowa City, IA 52242  
319.356.1616

### **HOUSING- SUBSIDIZED AND/OR LOW-INCOME**

Area XV Multi-County Housing Authority  
417 N College St  
Agency, IA 52530  
641.937.5222/641.932.3031

Fair Housing/Equal Opportunity Hotline  
800.669.9777

Keyway Management Company  
Highland Park Apartments  
109 18<sup>th</sup> Ave E

Oskaloosa, IA 52577  
641.673.4599

Oskaloosa Park Apartments  
1210 S F St  
Oskaloosa, IA 52577  
641.673.0364

Mahaska County Habitat for Humanity  
P.O. Box 583  
201 N Market St  
Oskaloosa, IA 52577  
641.295.5805

Mahaska County Homelessness Coalition  
P.O. Box 281  
Oskaloosa, IA 52577  
641.670.0717

Oskaloosa Municipal Housing Agency  
220 S Market St  
Oskaloosa, IA 52577  
641.673.8361

Oskaloosa Housing Trust Fund  
220 S Market St  
Oskaloosa, IA 52577  
641.673.9431

USDA Rural Development- Area 5  
1709 S B St  
Albia, IA 52531  
641.932.3031

### **HUMAN SERVICES**

American Home Finding Association  
P.O. Box 656  
215 E 5<sup>th</sup> St  
Ottumwa, IA 52501  
641.682.3449/800.290.0876

Family Development and Self-Sufficiency  
(FaDSS) Program  
114 N Market St  
Oskaloosa, IA 52577  
641.673.8758

Iowa Department of Human Services (DHS)  
410S 11<sup>th</sup> St  
Oskaloosa, IA 52577  
641.622.2090

Southern Iowa Economic Development  
Association (SIEDA)  
114 N Market St  
Oskaloosa, IA 52577  
641.673.5958

United States Social Security Administration  
2429 Northgate St, Suite A  
Ottumwa, IA 52501

866.964.7394

United Way of Mahaska County  
500 High Ave E  
Oskaloosa, IA 52577  
641.673.6043

Wapello County DHS Decat/Empowerment Office  
120 E Main St  
Ottumwa, IA 52501  
641.682.8793

### **LAW ENFORCEMENT AND CRIME PREVENTION OR SERVICES**

Child Support Recovery Unit  
1200 University Ave  
Des Moines, IA  
888.229.9223

Crime Victim Compensation  
800.373.5044

Eighth Judicial Department of Corrections  
1805 W Jefferson, PO #1060  
Fairfield, IA 52556  
641.472.4242

Non-Emergency Police  
Oskaloosa/Fremont: 641.672.2557  
New Sharon: 641.637.1739

### **LEGAL SERVICES**

Mahaska County Attorney  
Mahaska County Courthouse  
106 S 1<sup>st</sup> St  
Oskaloosa, IA 52577  
641.673.9819

Legal Hotline for Older Iowans  
515.282.8161/ 1.800.992.8161

Legal Services Corp. of Iowa (Iowa Legal Aid)  
112 3<sup>rd</sup> St E  
Ottumwa, IA 52501  
641.683.3166 / 800.452.0007

Youth Law Hotline  
800.728.1172

### **NURSING HOMES, ASSISTED AND INDEPENDENT LIVING**

Crystal Heights Care Center  
1514 High Ave W  
Oskaloosa, IA 52577  
641.673.7032

Iowa Health Care Association  
1775 90th St  
West Des Moines, IA 50266

515.978.2204

Homestead of Oskaloosa (Formerly Maple Ridge)  
2102 S Market St  
Oskaloosa, IA 52577  
641.672.1090

North Mahaska Specialty Care  
2401 Crestview Drive  
Oskaloosa, IA 52577  
641.673.3000

Oskaloosa Care Center  
605 Hwy 432  
Oskaloosa, IA 52577  
641.676.3414

White Oak Estates  
914 N 12th St  
Oskaloosa, IA 52577  
641.673.4443

### **RECREATION**

Mahaska Community Recreation Foundation  
2055 238<sup>th</sup> St  
Oskaloosa, IA 52577  
641.672.2499

Mahaska County Conservation Board  
2254 200<sup>th</sup> St  
New Sharon, IA 50207  
641.673.9327

Oskaloosa Parks and Recreation  
220 S Market St  
Oskaloosa, IA 52577  
641.673.9431

Wesley Woods Camp and Retreat Center  
10896 Nixon St  
Indianola, IA 50125  
866.684.7753

### **REFERRAL**

Mahaska County Extension Services (ISU)  
212 N I St  
Oskaloosa, IA 52577  
641.673.5841

### **SENIOR SERVICES**

Aging Resources  
5835 Grand Ave, Suite 108  
Des Moines, IA 50309  
515.225.1310

American Association of Retired Persons (AARP)  
Iowa  
600 E Court Ave, Suite 100  
Des Moines, IA 50319

866.554.5378

Public Health Services - MHP  
1229 C Ave E  
Oskaloosa, IA 52577  
641.672.3100

Seneca Area Agency on Aging New Sharon  
Community Center  
111 E Market St  
New Sharon, IA 50207  
641.637.4550

Milestones  
715 B Ave E  
Oskaloosa, IA 52577  
641.673.3033

United States Social Security Administration  
2429 Northgate St. #A  
Ottumwa, IA 52501  
866.964.7394

### **SHELTERS/HOMELESSNESS RESOLUTION**

Crisis Intervention Services  
500 High Ave W  
Oskaloosa, IA 52577  
641.673.0336

Emergency and Transitional Housing, YWCA  
717 Grand Ave  
Des Moines, IA 50309  
515.244.8961

Mahaska County Homelessness Coalition  
P.O. Box 281  
Oskaloosa, IA 52577  
641.670.0717

### **SUPPORT GROUPS**

Alcoholic Anonymous  
St Paul's Church  
501 High Ave E  
St. James Episcopal Church  
207 S 3<sup>rd</sup> St

Alcoholics Anonymous at Crossroads of Pella  
Pella Community Center  
712 Union St, Room 308  
641.628.1212

Alzheimer's Support Group  
641.672.3100

Edge of Recovery Substance Abuse  
103 North 3rd  
Oskaloosa, IA 52577  
641.780.1087

Mom's with Hope Support Group

Comfort House of Pella  
404 Union Street  
Pella, IA 50219  
641.620.5058

Postpartum Adjustment Group  
Pine Rest Des Moines Clinic  
6200 Aurora Avenue  
Urbandale, IA 50322  
515.331.0303

Suicide Survivor Support Group  
404 Union Street  
Pella, IA 50219  
641.620.5058

### **TRANSPORTATION**

Iowa Department of Human Services, Iowa  
Medicaid Enterprise (IME)  
Non- Emergency Medical Transportation  
866.572.7662

10-15 Transit  
641.683.2024

Love in the Name of Christ (Love INC)  
P.O. Box 213  
500 High Ave W  
Oskaloosa, IA 52577  
641.676.3750

Oskaloosa Rides  
United Way of Mahaska County  
500 High Ave W  
Oskaloosa, IA 52577  
641.673.6043

Trailways Bus System  
OTTUMWA  
210 W Main St  
641.682.2009  
KNOXVILLE  
1204 S Lincoln St  
641.842.3414

### **VETERAN SERVICES**

County of Mahaska Veterans Affairs  
106 S 1St St  
Oskaloosa, IA 52577  
641.673.7727

Iowa Veteran's Home  
1301 Summit St  
Marshalltown, IA 50158  
641.752.1501

Veterans Administration Community Based  
Outpatient Clinic  
KNOXVILLE  
1515 W Pleasant Drive

Knoxville, IA 50138  
641.828.5019  
OTTUMWA  
1009 East Pennsylvania Ave  
Ottumwa, IA 52501  
641.683.4300

### **YOUTH**

4-H Foundation  
212 N I St  
Oskaloosa, IA 52577  
641.673.5841 ext. 24

Boy Scouts of America Mid-Iowa Council  
Clayman Service Center  
6123 Scout Trail  
Des Moines, IA 50321  
515.266.2135

Girl Scouts of Greater Iowa  
10715 Hickman Rd.  
Des Moines, IA 50322  
515.278.2881 / 800.242.8289

Local Office:  
500 High Ave W  
Oskaloosa, IA 52577  
641.676.3474

Mahaska County YMCA  
414 N 3<sup>rd</sup> St  
Oskaloosa, IA 52577  
641.673.8411

New Hope Community Center  
P.O. Box 565  
308 5<sup>th</sup> W St  
Oskaloosa, IA 52577  
Phone: 641.676.1601  
Runaway Hotline  
800.786.2929

Serve Our Youth Network  
309 Roosevelt Rd  
Pella, IA 50219  
641.620.9037 / 515.286.3355 ext. 6818

South Central Iowa Youth for Christ  
221 1<sup>st</sup> Ave E  
Oskaloosa, IA 52577  
641.673.3187

# **V. Detail Exhibits**

---

**[VVV Consultants LLC]**

---

## a) Patient Origin Source Files

[VVV Consultants LLC]

**Outpatient Destination Summary Report by County/State  
For January - December 2018**

Mahaska								
	Visits	% of Visits	Visits					
			<18	18-44	45-64	65-74	75+	
Albia, Monro Co Hosp	23	0.18 %	4	13	5	1	0	
Ames, Mary Greeley	32	0.25 %	1	14	3	10	4	
Atlantic, Cass Co Mem	7	0.05 %	0	7	0	0	0	
Bettendorf, UnityPoint	1	0.01 %	0	1	0	0	0	
Bloomfield, Davis Co Hosp	7	0.05 %	1	5	1	0	0	
Boone, Boone Co Hosp	2	0.02 %	0	1	1	0	0	
Cedar Falls, Sartori Mem	1	0.01 %	0	1	0	0	0	
Cedar Rapids, Mercy	19	0.15 %	1	5	8	2	3	
Cedar Rapids, St Luke's	10	0.08 %	0	0	4	3	3	
Centerville, Mercy Med	8	0.06 %	2	3	3	0	0	
Chariton, Lucas Co Hlth	12	0.09 %	1	2	1	6	2	
Clinton, Mercy Medical	1	0.01 %	1	0	0	0	0	
Corydon, Wayne Co Hosp	2	0.02 %	0	1	1	0	0	
Council Bluffs, CHI Hlth	1	0.01 %	0	0	1	0	0	
Council Bluffs, Jennie Ed	1	0.01 %	1	0	0	0	0	
Creston, Greater Reg Med	4	0.03 %	0	0	0	0	4	
Davenport, Genesis	3	0.02 %	1	0	2	0	0	
Decorah, Winneshiek Med	3	0.02 %	2	0	1	0	0	
Des Moines, Broadlawn	14	0.11 %	0	5	7	2	0	
Des Moines, IA, Lutheran	45	0.35 %	3	13	15	7	7	
Des Moines, IMMC	265	2.08 %	45	45	69	39	67	
Des Moines, Mercy Med	264	2.07 %	23	65	99	39	38	
Dubuque, Mercy Medical	1	0.01 %	0	0	0	1	0	
Estherville, Avera Holy	1	0.01 %	0	1	0	0	0	

Fairfield, Jefferson Co	22	0.17 %	0	10	12	0	0	
Fort Dodge, Trinity	2	0.02 %	0	0	1	1	0	
Grinnell, Grinnell Reg	228	1.78 %	13	88	61	35	29	
Grundy Center, Grundy Co	1	0.01 %	0	0	0	1	0	
Iowa City, Mercy	19	0.15 %	1	4	2	0	12	
Iowa City, U of I Hosp	675	5.30 %	77	169	236	120	73	
Jefferson, Greene Co Med	1	0.01 %	0	0	0	1	0	
Keesauqua, Van Buren Co	1	0.01 %	1	0	0	0	0	
Knoxville, Knoxville Hosp	50	0.39 %	6	21	16	2	5	
Leon, Decatur Co Hosp	2	0.02 %	1	1	0	0	0	
Manning, Manning Regional	5	0.04 %	0	3	2	0	0	
Maquoketa, Jackson Co	1	0.01 %	0	0	0	0	1	
Marengo, Marengo Mem Hosp	2	0.02 %	0	1	0	0	1	
Marshalltown, Central	19	0.15 %	2	2	4	3	8	
Mason City, Mercy Medical	2	0.02 %	0	2	0	0	0	
Mount Ayr, Ringgold Co	1	0.01 %	0	0	1	0	0	
Mount Pleasant, Henry Co	2	0.02 %	0	2	0	0	0	
Newton, Skiff Med Center	20	0.16 %	4	4	7	2	3	
Osoeola, Clarke Co	2	0.02 %	1	0	1	0	0	
Oskaloosa, Mahaska Hlt	7862	61.99 %	1226	2413	1869	970	1414	
Ottumwa, Ottumwa Reg	509	4.00 %	53	174	166	71	45	
Pella, Pella Reg Med Cen	2427	19.06 %	454	919	591	280	183	
Perry, Dallas Co Hlth Sys	1	0.01 %	1	0	0	0	0	
Pocahontas, Pocahontas Comm	1	0.01 %	1	0	0	0	0	

*Outpatient Destination Summary Report by County/State  
For January - December 2018*

Mahaska							
	Visits	% of Visits	Visits				
			<18	18-44	45-64	65-74	75+
Red Oak, Montgomery Co	2	0.02 %	0	1	0	0	1
Sac City, Loring Hosp	1	0.01 %	0	0	1	0	0
Sigourney, Keokuk Co Hlth	44	0.35 %	12	16	7	9	0
Sioux Center, Sx Cen Hlt	1	0.01 %	0	1	0	0	0
Sioux City, St Luke's	1	0.01 %	1	0	0	0	0
Spencer, Spencer Hospital	1	0.01 %	0	1	0	0	0
Spirit Lake, Lakes Reg	1	0.01 %	0	1	0	0	0
Waterloo, Allen Hosp	1	0.01 %	0	1	0	0	0
Waterloo, Covenant	3	0.02 %	1	2	0	0	0
Waverly, Waverly Hth Cntr	1	0.01 %	0	1	0	0	0
Webster City, Van Diest	1	0.01 %	1	0	0	0	0
West Burlington, Grt Rrv	3	0.02 %	1	2	0	0	0
West Des Moines, Meth W	9	0.07 %	1	3	3	0	2
West Des Moines, West L	51	0.40 %	1	13	17	14	6
Winterset, Madison Co	1	0.01 %	0	0	1	0	0
TOTAL	12731	100.00 %	1945	4037	3219	1619	1911



**Outpatient Destination Summary Report by County/State  
For January - December 2017**

Mahaska							
	Visits	% of Visits	Visits				
			<18	18-44	45-64	65-74	75+
Albia, Monroe Co Hosp	41	0.31 %	5	18	8	0	10
Ames, Mary Greeley	19	0.14 %	2	11	1	0	5
Anamosa, Jones Regional	1	0.01 %	0	0	1	0	0
Bettendorf, UnityPoint	2	0.01 %	1	1	0	0	0
Bloomfield, Davis Co Hosp	15	0.11 %	5	5	5	0	0
Cedar Falls, Sartori Mem	7	0.05 %	0	6	0	1	0
Cedar Rapids, Mercy	15	0.11 %	0	9	4	1	1
Cedar Rapids, St Luke's	3	0.02 %	0	2	1	0	0
Centerville, Mercy Med	5	0.04 %	1	2	1	1	0
Chariton, Lucas Co Hlth	4	0.03 %	2	2	0	0	0
Charles City, Floyd Co	1	0.01 %	0	0	0	1	0
Clinton, Mercy Medical	1	0.01 %	1	0	0	0	0
Corydon, Wayne Co Hosp	1	0.01 %	0	0	1	0	0
Council Bluffs, CHI Hlth	1	0.01 %	1	0	0	0	0
Creston, Greater Reg Med	7	0.05 %	1	0	0	0	6
Davenport, Genesis	8	0.06 %	1	4	3	0	0
Des Moines, Broadlawn	18	0.13 %	0	6	11	1	0
Des Moines, IA, Lutheran	44	0.33 %	6	8	12	15	3
Des Moines, IMMC	254	1.90 %	47	34	57	78	38
Des Moines, Mercy Med	276	2.07 %	28	60	93	48	47
Fairfield, Jefferson Co	19	0.14 %	2	4	11	0	2
Fort Dodge, Trinity	6	0.04 %	1	4	1	0	0
Fort Madison, Ft Mad Comm	5	0.04 %	2	0	3	0	0
Grinnell, Grinnell Reg	206	1.54 %	14	67	65	32	28
Grundy Center, Grundy Co	2	0.01 %	1	0	1	0	0
Guthrie Center, Guthrie Co	2	0.01 %	0	2	0	0	0
Harlan, Myrtue Med Center	1	0.01 %	0	1	0	0	0
Iowa City, Mercy	24	0.18 %	6	3	7	2	6
Iowa City, U of I Hosp	667	4.99 %	103	162	221	104	77
Jefferson, Greene Co Med	1	0.01 %	0	1	0	0	0
Keokuk, Keokuk Area Hosp	1	0.01 %	0	1	0	0	0
Keosauqua, Van Buren Co	2	0.01 %	0	1	1	0	0
Knoxville, Knoxville Hosp	49	0.37 %	2	15	18	6	8
Leon, Decatur Co Hosp	3	0.02 %	1	0	0	2	0
Manning, Manning Regional	6	0.04 %	0	3	3	0	0
Marengo, Marengo Mem Hosp	1	0.01 %	1	0	0	0	0
Marshalltown, Central	31	0.23 %	2	3	12	7	7
Mount Pleasant, Henry Co	4	0.03 %	2	0	1	1	0
Nevada, Story Co Med Cen	4	0.03 %	1	1	0	0	2
Newton, Skiff Med Center	16	0.12 %	4	7	5	0	0
Orange City, Org City Hlth	1	0.01 %	0	1	0	0	0
Oskaloosa, Mahaska Hlt	8460	63.35 %	1472	2767	1941	959	1321
Ottumwa, Ottumwa Reg	596	4.46 %	70	216	178	66	64
Pella, Pella Reg Med Cen	2401	17.98 %	456	919	535	302	189
Perry, Dallas Co Hlth Sys	1	0.01 %	1	0	0	0	0
Sac City, Loring Hosp	5	0.04 %	0	0	0	5	0
Sigourney, Keokuk Co Hlth	38	0.28 %	8	18	7	3	2
Sioux Center, Six Cen Hlt	1	0.01 %	0	0	0	0	1
Spirit Lake, Lakes Reg	1	0.01 %	0	0	0	1	0
Washington, Wash. Co	5	0.04 %	0	1	0	0	4
Waterloo, Allen Hosp	1	0.01 %	0	0	0	1	0
Waterloo, Covenant	3	0.02 %	0	0	0	3	0
West Burlington, Grt Riv	7	0.05 %	0	4	2	0	1
West Des Moines, Meth W	8	0.06 %	1	4	1	1	1
West Des Moines, West L	53	0.40 %	1	11	23	7	11
West Union, Palmer Luth	1	0.01 %	0	0	1	0	0
TOTAL	13355	100.00 %	2252	4386	3235	1648	1834

**Outpatient Destination Summary Report by County/State  
For January - December 2016**

Mahaska								
	Visits	% of Visits	Visits					
			<18	18-44	45-64	65-74	75+	
Albia, Monroe Co Hosp	35	0.26 %	9	20	6	0	0	0
Ames, Mary Greeley	33	0.25 %	1	13	10	2	7	7
Anamosa, Jones Regional	1	0.01 %	0	1	0	0	0	0
Belmond, Iowa Specialty	1	0.01 %	0	0	1	0	0	0
Bettendorf, UnityPoint	1	0.01 %	0	0	1	0	0	0
Bloomfield, Davis Co Hosp	14	0.10 %	3	5	6	0	0	0
Boone, Boone Co Hosp	4	0.03 %	3	1	0	0	0	0
Britt, Hancock Hlth Sys	1	0.01 %	0	1	0	0	0	0
Carroll, St. Anthony Reg	1	0.01 %	1	0	0	0	0	0
Cedar Falls, Sartori Mem	2	0.01 %	0	2	0	0	0	0
Cedar Rapids, Mercy	16	0.12 %	1	5	10	0	0	0
Cedar Rapids, St Luke's	9	0.07 %	0	3	2	3	1	1
Centerville, Mercy Med	6	0.04 %	1	2	3	0	0	0
Chanton, Lucas Co Hlth	1	0.01 %	0	1	0	0	0	0
Charles City, Floyd Co	1	0.01 %	0	1	0	0	0	0
Clarion, Iowa Specialty	1	0.01 %	1	0	0	0	0	0
Corning, CHI Health	1	0.01 %	0	0	1	0	0	0
Corydon, Wayne Co Hosp	1	0.01 %	0	1	0	0	0	0
Council Bluffs, Jennie Ed	1	0.01 %	1	0	0	0	0	0
Creston, Greater Reg Med	9	0.07 %	0	3	0	0	6	6
Davenport, Genesis	1	0.01 %	0	0	1	0	0	0
Des Moines, Broadlawns	10	0.07 %	0	2	6	2	0	0
Des Moines, IA, Lutheran	30	0.22 %	3	3	7	11	6	6
Des Moines, IMMC	271	2.03 %	36	31	71	75	58	58
Des Moines, Mercy Med	285	2.13 %	26	63	112	41	43	43
Dewitt, Genesis	2	0.01 %	2	0	0	0	0	0
Elkader, Central Conn	1	0.01 %	1	0	0	0	0	0
Emmetsburg, Palo Alto Co	1	0.01 %	0	0	1	0	0	0
Fairfield, Jefferson Co	35	0.26 %	2	27	5	0	1	1
Fort Dodge, Trinity	4	0.03 %	0	3	1	0	0	0
Grinnell, Grinnell Reg	232	1.74 %	17	89	68	33	25	25
Guthrie Center, GuthrieCo	3	0.02 %	0	1	2	0	0	0
Ida Grove, Horn Mem Hosp	1	0.01 %	0	1	0	0	0	0
Iowa City, Mercy	16	0.12 %	1	6	3	2	4	4
Iowa City, U of I Hosp	645	4.82 %	95	163	231	88	68	68
Iowa Falls, Hansen Hosp	1	0.01 %	0	0	1	0	0	0
Keosauqua, Van Buren Co	7	0.05 %	1	5	1	0	0	0
Knoxville, Knoxville Hosp	58	0.43 %	6	17	20	7	8	8
LeMars, Floyd Valley	1	0.01 %	0	1	0	0	0	0
Leon, Decatur Co Hosp	3	0.02 %	0	0	3	0	0	0
Manchester, Reg. Med. Cnt	1	0.01 %	1	0	0	0	0	0
Manning, Manning Regional	2	0.01 %	0	2	0	0	0	0
Maquoketa, Jackson Co	4	0.03 %	1	3	0	0	0	0
Marengo, Marengo Mem Hosp	1	0.01 %	0	0	0	0	1	1
Marshalltown, Central	21	0.16 %	0	2	4	4	11	11
Mason City, Mercy Medical	4	0.03 %	1	2	1	0	0	0
Mount Pleasant, Henry Co	10	0.07 %	4	4	1	0	1	1
Muscatine, UnityPoint	1	0.01 %	0	1	0	0	0	0

*Outpatient Destination Summary Report by County/State  
For January - December 2016*

Mahaska							
	Visits	% of Visits	Visits				
			<18	18-44	45-64	65-74	75+
Nevada, Story Co Med Cen	2	0.01 %	0	0	0	2	0
Newton, Skiff Med Center	29	0.22 %	1	20	8	0	0
Oelwein, Mercy Hosp	1	0.01 %	0	1	0	0	0
Orange City, Org Cty Hlth	1	0.01 %	0	1	0	0	0
Oskaloosa, Mahaska Hlt	8503	63.60 %	1500	2938	1812	926	1327
Ottumwa, Ottumwa Reg	564	4.22 %	82	183	181	58	60
Pella, Pella Reg Med Cen	2315	17.31 %	481	899	521	229	185
Perry, Dallas Co Hlth Sys	4	0.03 %	2	1	1	0	0
Rock Valley, Hegg Mem Hlt	1	0.01 %	1	0	0	0	0
Sigourney, Keokuk Co Hlth	67	0.50 %	17	31	10	9	0
Sioux Center, Sx Cen Hlt	2	0.01 %	0	1	0	1	0
Sioux City, Mercy Med	1	0.01 %	0	1	0	0	0
Spirit Lake, Lakes Reg	1	0.01 %	1	0	0	0	0
Washington, Wash. Co	14	0.10 %	3	8	3	0	0
Waterloo, Allen Hosp	2	0.01 %	2	0	0	0	0
Waterloo, Covenant	3	0.02 %	0	1	0	2	0
Waukon, Veterans Mem	2	0.01 %	0	2	0	0	0
Waverly, Waverly Hth Cntr	1	0.01 %	0	1	0	0	0
West Burlington, Grt Rrv	2	0.01 %	0	2	0	0	0
West Des Moines, Meth W	15	0.11 %	1	4	4	4	2
West Des Moines, West L	50	0.37 %	1	13	15	14	7
TOTAL	13370	100.00 %	2310	4592	3134	1513	1821

---

## b) Town Hall Attendees, Notes, & Feedback

[VVV Consultants LLC]

**Mahaska County, Iowa CHNA Town Hall meeting - Thursday, March 5th 5:30 p.m. to 7:00 p.m. N=39**

Attend	Last Name	First Name	Organization	Title	City	ST	ZIP
1	Allsup	Ginger/Ken	Paper	Oskaloosa News Owner	Oskaloosa	IA	52577
1	Bogle	Kitty	Sieda	Certified Prevention Specialist	Ottumwa	IA	52501
1	Breon	Dr. Timothy	Mahaska Health	CMO, Physician	Oskaloosa	IA	52577
1	Brown	Dr. Kimberrly	William Penn University	Director of Nursing Division	Oskaloosa	IA	52501
1	Brown	Emily	Mahaska Health Partnership	Senior Marketing Specialist	Oskaloosa	IA	52577
1	Comfort	Martha	CSAP Consulting, L.L.C.	Child Sexual Abuse Prevention Specialist	Oskaloosa	IA	52577
1	Davis	Sabrena	Mahaska Health	Population Health	Oskaloosa	IA	52577
1	DeRonde	Kevin	Mahaska Health Partnership	CEO	Oskaloosa	IA	52577
1	Dursky	Eric	Mahaska County Public Health	Environmental Health/Sanitarian	Oskaloosa	IA	52577
1	Falconer	Paula	AmeriCorps	MW CPPC	Oskaloosa	IA	52577
1	Flaherty	Tom	Mahaska County	Economic Development Director	oskaloosa	IA	52577
1	Forseen	Tammy	American Home Finding Association	I-Smile Coordinator	Ottumwa	IA	52501
1	Frost	Ann	The Chamber	Executive Director	Oskaloosa	IA	52577
1	fuller	felicia	Oskaloosa Community School	Middle School School Nurse BSN, RN	Oskaloosa	IA	52577
1	Gipple	Denyse	Mahaska Health	Population Health and Quality Director	Oskaloosa	IA	52577
1	Gronendyk	Mark	Mahaska County	Supervision	Oskaloosa	IA	52577
1	Hansen	Jim	Mahaska Health	Board Member	Oskaloosa	IA	52577
1	Holland	Angie	Oskaloosa Herald	Managing Editor	Oskaloosa	IA	52577
1	Krutzfeldt	Dave	City of Oskaloosa	Mayor	Oskaloosa	IA	52577
1	Krutzfeldt	Jane	MidWestOne Investments	Investments Assistant	Oskaloosa	IA	52577
1	Langkamp	David	MHP	Trustee	Oskaloosa	IA	52577
1	Langkamp	Shawn	Mahaska County Public Health	Board	Oskaloosa	IA	52577
1	Larson	Matt	Mahaska County YMCA	CEO	oskaloosa	IA	52577
1	McReynolds	Pat	MWECI	Area Director	Oskaloosa	IA	52577
1	Moretz	Joy	Love INC	Clearinghouse Coordinator	Oskaloosa	IA	52577
1	North	Dr. David	Mahaska Health	Physician	Oskaloosa	IA	52577
1	Ottosson	Diane	City Council	1st Ward Council Member	Oskaloosa	IA	52577
1	Ottosson	John	William Penn University		Oskaloosa	IA	52577
1	Parker	Erin	Big Brothers Big Sisters of Mahaska County	Program Manager	Oskaloosa	IA	52577
1	Peeler	Brian	Love INC	Volunteer	Oskaloosa	IA	52577
1	Pothoven	John	Mahaska Health	Board Member	Oskaloosa	IA	52577
1	Rice	Lea	Mahaska Health	Dietitian & Diabetes Educator	Oskaloosa	IA	52577
1	Schwinley	Neil	Mahaska Health	Surgeon	Oskaloosa	IA	52577
1	Van Engelenhoven	Deb	Oskaloosa Herald	Publisher	Oskaloosa	IA	52577
1	Van Renterghem	Russell	Mahaska County Sheriff's Office	County Sheriff	Oskaloosa	IA	52577
1	Vos	Blaine	New Hope Community Center	Staff	Oskaloosa	IA	52577
1	Vos	Joan	New Hope Community Center	Staff	Oskaloosa	IA	52577
1	Wright	Paula	Oskaloosa Community School District	Superintendent	Oskaloosa	IA	52577
1	Zacharjasz	Dr. Mark	Mahaska Health	Physician	Oskaloosa	IA	52577

**Mahaska Health Partnership CHNA 2020**  
**Town Hall March 5, 2020 5:30-7:00p.m. N=39**

- All types of providers/doctors are in the room
- Drug problems: Meth, Opioids, Marijuana
- Top 3 Chronic diseases: Hypertension, Stroke, Hyperlipidemia
- Specialists needed: Mental Health, Neurology, ENT, Endo, Rhum
- New Recreation center (City, School, YMCA) by the Elementary school coming
- Recruiting new providers now: Gen Surg, Ortho, FP, IM

**Strengths:**

- Great Hospital, Staff and Vision
- Access to YMCA, Rec facilities
- Hospice
- Hospital proactivity
- New Providers
- Educational opportunities
- Corporate involvement in health within county
- Public Health
- Prenatal Care
- Church involvement

**Weaknesses:**

- Drug Abuse
- Obesity
- Mental Health
- Awareness of HC Services
- Alcohol
- Own your own health (Apathy)
- Provider turnover
- Food Insecurity
- Care going outside the county
- STDs
- Diabetes
- Violence
- Family Planning

## Wave #3 CHNA - Mahaska County, IA

### Mahaska Health Partnership - Town Hall Conversation - Strengths (Color Cards) N= 39

Card #	C1	Today: What are the strengths of our community that contribute to health?	Card #	C1	Today: What are the strengths of our community that contribute to health?
7	BH	Mental Health Treatment (Meth usage will continue to effect Health care)	20	HOSP	County Hospital
23	BH	County/State Awareness about Mental Health	5	HSP	Hospice
1	CHIR	Chiro	6	HSP	Hospice
22	COMM	Better Communication	9	HSP	Hospice
8	CORP	Community Support	11	HSP	Hospice
10	CORP	Community has Capabilities to Mobilize support around a cause	18	HSP	Hospice
12	CORP	Community Engagement Events	19	HSP	Hospice
15	CORP	Community Pride/Commitment/Leadership	16	KID	Early Childhood
1	DENT	Dental	2	MAN	Passionate Efforts to Improve Hospital
13	DIAB	Education on Diabetes	5	MAN	Willingness/Cooperation/Business Participation
4	DOCS	Hospital Recruiting New Providers	6	MAN	Corp./Church Support
6	DOCS	New Providers	6	MAN	MHP Staff/Vision/Facility
11	DOCS	Gaining New Providers	14	MAN	Committee Commitment
12	DOCS	Increase in Providers/Variety of Services	15	MAN	CEO
21	DOCS	Access to Care/More Providers	16	MAN	Individuals/Leadership who care
22	DOCS	New Providers	20	MAN	Reinvigorated Leadership
6	DOH	Public Health	3	MRKT	Increase of Healthcare Marketing
15	DOH	Public Health	4	OTHR	Improved Church Involvement
6	EDU	Education	4	OTHR	Sense of Community
8	EDU	Education System	5	OTHR	Churches
10	EDU	Education	6	OTHR	Blue Zone
1	EYE	Eyes	9	OTHR	Having this discussion
5	FAC	Facilities	9	OTHR	Quality of Life
4	FINA	Musco Benefactor	16	OTHR	Churches
16	FINA	Blue Zone County/State funding	17	OTHR	Christian Hospital
1	FIT	Access to Exercise	18	OTHR	Community
3	FIT	New Rec. Center	18	PNEO	MWECI Prenail
4	FIT	New Rec. Center	6	POV	Services for Low Income
6	FIT	Access to Rec. Facilities	22	POV	Services for Low Income
7	FIT	P.E. In Schools	1	QUAL	Satisfaction
7	FIT	YMCA	17	QUAL	Compassion
9	FIT	Access to Y	17	QUAL	Quality
11	FIT	Access to Y	2	REC	Increase in Rec Trail Usage
12	FIT	Options for Indoor Exercise	4	REC	Trail
21	FIT	Access to Physical Activities	7	REC	Rec. Trail
22	FIT	Exercise Options (Several Free)	9	REC	Recreational Activity
4	GOV	Mayor	20	REC	Recreational Activities
3	HOSP	Changes at Hospital/More Providers	15	STFF	Nursing
14	HOSP	Hospital/Hopeful Vision	17	STFF	Caring Employees
15	HOSP	Hospital Facilities	18	STFF	Customer Service
19	HOSP	Hospital	1	VACC	Vaccination



## Wave #3 CHNA - Mahaska County, IA

### Mahaska Health Partnership - Town Hall Conversation - Weakness (Color Cards) N= 39

Card #	C1	Today: What are the weaknesses of our community that contribute to health?	Card #	C1	Today: What are the weaknesses of our community that contribute to health?
12	ACC	Program Availability	11	MRKT	Communication of Programs Available
12	ALC	Alcohol Abuse	14	MRKT	Perception
1	BH	Mental Health (Need more Providers/Community Support Groups)	17	MRKT	Community Perception
3	BH	Mental Health	18	MRKT	Better Communication of What is Offered
7	BH	Mental Health	18	MRKT	Perception Needs to be Improved
8	BH	Mental Health Treatment	19	MRKT	Awareness of Resources/Services
10	BH	Mental Health	20	MRKT	Perceptions
11	BH	Access to Mental Health	21	MRKT	Resource Awareness
12	BH	Mental Health	3	OBES	Obesity/Inactivity
13	BH	Mental Health	7	OBES	Obesity
14	BH	Mental Health	11	OBES	Obesity/Diabetes Education
16	BH	Mental Health	17	OBES	Obesity
19	BH	Behavioral/Mental Health	19	OBES	Obesity
21	BH	Mental Health	16	OBG	OBGYN
22	BH	Mental Health	6	OTHR	Blue Zone
7	DIAB	Diabetes	9	OTHR	Affordable Housing
12	DIAB	Diabetes/Obesity Prevention	10	OTHR	Affordable Housing
13	DIAB	Diabetes	18	OTHR	Attitudes that We Need to Change
19	DIAB	Diabetes Prevention	20	OTHR	Amenities
7	DOCS	Provider Turnover	20	OTHR	Longevity
15	DOCS	More Providers	22	OTHR	Attitudes (Accept Need for Change)
19	DOCS	Provider Turnover	2	PNEO	Prenatal
7	DRUG	Substance Abuse	2	POV	Poverty
9	DRUG	Substance Abuse	7	POV	Food Insecurity
10	DRUG	Substance Abuse	9	POV	Food Insecurity
12	DRUG	Drugs (Meth, Opioids, Marijuana)	10	POV	Food Insecurity
14	DRUG	Drugs	14	POV	Poverty
19	DRUG	Substance Abuse	11	PREV	Prevention Education
5	ECON	More Desirable Jobs with Health Benefits	4	REC	Bicycles for Community Use
13	ECON	Employees Local	4	REC	Walkability of Neighborhoods (Need More Sidewalks)
16	ECON	Disenfranchisement	5	REC	More Leisure/Entertainment Opportunities
20	ECON	Economics	14	SMOK	Smoking
12	EDU	Education	19	SMOK	Smoking
15	EDU	More Education in the Workplace	2	STD	STI's
16	EDU	School Discipline	7	STD	STD
12	FAC	Facilities	9	STD	STD's
7	FAM	Family Planning	10	STD	STD Education/Prevention
9	FIT	Affordable Fitness	19	STD	STD's/Family Planning
10	FIT	Affordable Exercise Opportunities	6	TRAN	Public Transport to New Fitness Center
13	FIT	Expand the Y	17	TRAV	Out of Town Care
4	MAN	Employer Involvement in Community Health Activities/Awareness	9	VIO	Violence Prevention
20	MAN	Coalition	10	VIO	Resources for Victims of Abuse/Violence
1	MRKT	Marketing of Services Available	14	VIO	Abuse
3	MRKT	Improve Community Perception of Hospice and Clinics	19	VIO	Violence Prevention
6	MRKT	Educate Community Knowledge Base from Perception	5	WELL	Education of Youth/Teens (To Decrease out of Wedlock Pregnancies/Substance Abuse/Domestic Violence)
7	MRKT	Awareness	6	WELL	Wellness Programs



---

## c) Public Notice & Requests

[VVV Consultants LLC]

## STAKEHOLDER E-MAIL MESSAGE #1

**From:** Patty Malloy

**Date:** January 20, 2020

**To:** [pmalloy@mahaskahealth.org](mailto:pmalloy@mahaskahealth.org)

**BCC:** Community Leaders, Providers and Hospital Board and Staff

**Subject:** Mahaska Health Requests Community Health Feedback – Mahaska County, IA

Mahaska Health is asking community stakeholders for their participation in our 2020 Community Health Needs Assessment (CHNA) feedback survey.

The goal of the assessment is to gain a comprehensive understanding of the community's health needs and perceptions and highlight the progress that was made since the last CHNA report in 2017. The results of the survey will also help inform local service agencies and policy makers as they work to provide services for the community.

The short, anonymous survey is available online and can be found at:

[https://www.surveymonkey.com/r/MahaskaHealth\\_CHNA2020](https://www.surveymonkey.com/r/MahaskaHealth_CHNA2020). The survey link will also be available to the public on the Mahaska Health website at [www.mahaskahealth.org](http://www.mahaskahealth.org). **All area community stakeholders and business leaders are encouraged to participate in the survey by Friday, February 21<sup>st</sup>.** Thank you in advance for your participation.

Mahaska Health CEO, Kevin DeRonde encourages all community residents and leaders to complete the survey. "Your responses to the survey are vital in determining the direction of healthcare services in Mahaska County. We hope to see our community stakeholders provide input and feedback to help us further develop local healthcare services and improve access to care and services locally."

VVV Consultants LLC, an independent research firm from Olathe, KS, has been retained to conduct this countywide research. All responses will be confidential.

**On March 5th from 5:30-7:00pm, a CHNA Town Hall meeting will be held to discuss the results of the assessment. A light dinner will be provided starting at 5:15pm.** The community is encouraged to attend the meeting. Details to be announced soon.

Questions regarding CHNA activities may be directed to Mahaska Health's Public Health Coordinator Patty Malloy at (641) 672-3142.



# News Release

1229 C Avenue East  
Oskaloosa, Iowa 52577  
Phone: 641.672.3240

Contact: Grace Sereg  
Director of Brand and Communications  
[gsereg@mahaskahealth.org](mailto:gsereg@mahaskahealth.org)

January 20, 2020 – For Immediate Release

## **Mahaska Health Requests Community Health Needs Assessment Feedback**

MAHASKA COUNTY – Mahaska Health is asking area residents, businesses, and organizations for their participation in a 2020 Community Health Needs Assessment (CHNA) feedback survey.

The goal of the assessment is to gain a comprehensive understanding of the community's health needs and perceptions and highlight the progress that was made since the last CHNA report in 2017. The results of the survey will also help inform local service agencies and policy makers as they work to provide services for the community.

The short, anonymous survey is available online and can be found at: [https://www.surveymonkey.com/r/MahaskaHealth\\_CHNA2020](https://www.surveymonkey.com/r/MahaskaHealth_CHNA2020). The survey link will also be available to the public on the Mahaska Health website at [www.mahaskahealth.org](http://www.mahaskahealth.org). **All area community residents and business leaders are encouraged to participate in the survey by Friday, February 21<sup>st</sup>.** Thank you in advance for your participation.

Mahaska Health CEO, Kevin DeRonde encourages all community residents and leaders to complete the survey. "Your responses to the survey are vital in determining the direction of healthcare services in Mahaska County. We hope to see our community stakeholders provide input and feedback to help us further develop local healthcare services and improve access to care and services locally."

VVV Consultants LLC, an independent research firm from Olathe, KS, has been retained to conduct this countywide research. All responses will be confidential.

**On March 5th from 5:30-7:00pm, a CHNA Town Hall meeting will be held to discuss the results of the assessment. A light dinner will be provided starting at 5:15pm.** The community is encouraged to attend the meeting. Details to be announced soon.

Questions regarding CHNA activities may be directed to Mahaska Health's Public Health Coordinator Patty Malloy at (641) 672-3142.

###

## STAKEHOLDER E-MAIL MESSAGE #2

**From:** Patty Malloy

**Date:** February 10, 2020

**To:** [pmalloy@mahaskahealth.org](mailto:pmalloy@mahaskahealth.org)

**BCC:** Community Leaders, Providers and Hospital Board and Staff

**Subject:** CHNA Mahaska County IA – Town Hall Invite – March 5

To Community Leaders:

**Mahaska Health** is inviting area residents, businesses, and organizations for their participation in a 2020 Community Health Needs Assessment (CHNA) **Town Hall Meeting that will be held on Thursday, March 5<sup>th</sup> from 5:30 p.m. to 7:00 p.m. at the MTC Atrium at William Penn University (319 R Ave. West Oskaloosa IA 52577).** A light dinner will be provided starting at 5:15 p.m.

**Please reserve your Town Hall seat here:**

[https://www.surveymonkey.com/r/MahaskaCo\\_IA\\_CHNA2020\\_RSVP](https://www.surveymonkey.com/r/MahaskaCo_IA_CHNA2020_RSVP)

The goal of this assessment update is to understand progress in addressing community health needs cited in the 2017 CHNA report and to collect up-to-date community health perceptions. To accomplish this work, a short online survey has been developed and results will be shown at the upcoming Community Town Hall meeting. **The online survey will remain open to community members to complete until February 21<sup>st</sup>. Click here to take the short CHNA survey:** [https://www.surveymonkey.com/r/MahaskaHealth\\_CHNA2020](https://www.surveymonkey.com/r/MahaskaHealth_CHNA2020).

Questions regarding CHNA activities may be directed to Mahaska Health's Public Health Coordinator Patty Malloy at (641) 672-3142.



## News Release #2

1229 C Avenue East  
Oskaloosa, Iowa 52577  
Phone: 641.672.3240

Contact: Grace Sereg  
Director of Brand and Communications  
[gsereg@mahaskahealth.org](mailto:gsereg@mahaskahealth.org)

February 10, 2020 – For Immediate Release

### **CHNA Mahaska County IA – Town Hall Invite – March 5**

**MAHASKA COUNTY – Mahaska Health** is inviting area residents, businesses, and organizations for their participation in a 2020 Community Health Needs Assessment (CHNA) **Town Hall Meeting that will be held on Thursday, March 5<sup>th</sup> from 5:30 p.m. to 7:00 p.m. at the MTC Atrium at William Penn University (319 R Ave. West Oskaloosa IA 52577).** A light dinner will be provided starting at 5:15 p.m.

**Please reserve your Town Hall seat here:**

[https://www.surveymonkey.com/r/MahaskaCo\\_IA\\_CHNA2020\\_RSVP](https://www.surveymonkey.com/r/MahaskaCo_IA_CHNA2020_RSVP)

The goal of this assessment update is to understand progress in addressing community health needs cited in the 2017 CHNA report and to collect up-to-date community health perceptions. Mahaska Health CEO, Kevin DeRonde encourages all community residents and leaders to attend the Community Town Hall.

To accomplish this work, a short online survey has been developed and results will be shown at the upcoming Community Town Hall meeting. **The online survey will remain open to community members to complete until February 21<sup>st</sup>. Click here to take the short CHNA survey:**

[https://www.surveymonkey.com/r/MahaskaHealth\\_CHNA2020](https://www.surveymonkey.com/r/MahaskaHealth_CHNA2020).

Questions regarding CHNA activities may be directed to Mahaska Health's Public Health Coordinator Patty Malloy at (641) 672-3142.

###

# Community Health Needs Assessment discussed

BY TIFFANY MCDANIEL Herald staff writer

Attendees of the 2020 Community Health Needs Assessment Town Hall

OSKALOOSA – Mahaska Health Partnership, policymakers and local service agencies is learned that perception is key as the group gathered last Thursday to discuss the results of the 2020 Community Health Needs Assessment.



The goal of the assessment was to gain an idea of what the community's health needs are and what residents think about healthcare in the area, in comparison to the last time the assessment was done in 2017. Spearheading the discussion was VVV Consultants LLC. Principal Consultant Vince Vandehaar, who also facilitated the discussion in previous years.

"This is your town hall; [we] are just facilitating this discussion," he said. "We are here to stir the pot. You guys know what's happening in your own community, right? I come and visit, I kind of know, but I don't really know. I mean I'm looking at data and I'm looking at some of the opinions, but you really know what you want to focus on and that's why we have the town hall."

The group of approximately 50 people included, but wasn't limited to, hospital staff, Oskaloosa Mayor David Krutzfeldt, City Councilwoman Diane Ottoson, city school staff, and public health officials. Not only did the group review the results of the assessment, but they also reviewed health status data for Mahaska County that was taken from the web.

Vandehaar presented a slide show with all the data and asked the group to take notes as they followed along. The group then asked question amongst those sitting at their tables and aloud. Many did not agree with some of the answers and data shown and as they pointed out truths, Vandehaar reminded them that these are perceptions and not necessarily facts. The group learned that maybe the issue is that said truths are not made known to the vast majority of residents in the county.

Toward the end of the town hall Vandehaar asked everyone to discuss what were the community's health-related strengths were. Some of the responses he received were compliments to the staff at Mahaska Health and the Hospice Serenity House, there are good recreational facilities, wide access to services and the hospital's ability to remain proactive at addressing needs.

Vandehaar also asked the group to discuss what areas the community could improve as it relates to health needs and the group came up with 13 items for discussion: how the community addresses alcoholism, the high provider turnover rate, owning our health (apathy), mental health in the community, improving the awareness of healthcare services, the high STD rate in the area, the high diabetes rate, family planning, drug abuse, obesity, food insecurities and the issue of residents seeking help for there healthcare needs elsewhere. Of the 13 issues mentioned, the mental health crisis, awareness of healthcare services, the obesity rate, diabetes, and showing more interest in our health needs were most important to the group.

In four to six weeks the group will reconvene to bring solutions to the table on what can be done to improve these issues.

---

## d) Primary Research Detail

Neighborhood Roundtables & Online Research

[VVV Consultants LLC]

## CHNA 2020 Community Feedback: Mahaska Health Partnership (IA) N= 379

ID	Zip	Overall	Movement	c1	c2	c3	In your opinion, what are the root causes of "poor health" in our community?
1009	52577	Poor	Decreasing - slipping downward	ACC	DOCS		Lack of access to providers
1192	52595	Average	Decreasing - slipping downward	ACC			Hours for healthcare available after work hours
1052	52577	Average	Not really changing much	DENT	POV		Dental for the poor.
1135		Average	Not really changing much	DOCS			Pt.s seek medical treatment in other towns due too Medical staff turnovers.
1223	52577	Good	Decreasing - slipping downward	DRUG			Substance abuse services
1261	52577	Average	Decreasing - slipping downward	DRUG			Chronic substance abuse expanding
1091	52501	Good	Increasing - moving up	FINA			Priorities of where to spend money
1366	52577	Average	Not really changing much	FINA			Cost of health care
1137	52577	Good	Not really changing much	INSU	FINA		insurance, money
			Decreasing - slipping downward				
1018	52577	Average	Decreasing - slipping downward	NUTR			Poor nutrition
1090	52577	Good	Increasing - moving up	NUTR			McDonalds
1365	52577	Average	Not really changing much	NUTR			No healthy food grocers (like whole foods or natural grocers) and no restaurants offering vegan/vegetarian options as a primary option
1196	50265	Poor	Decreasing - slipping downward	OTHR	STFF		Your DHS office has zero accountability to providers and families. Some families are targeted while others are allowed to abuse kids and nothing is done. Calls to the local DHS office go unanswered and when questioned the supervisor is rude and refuses to hold the staff accountable.
1023		Average	Not really changing much	OTHR			Lack of care of society
			Decreasing - slipping downward				
1115	52577	Average	Decreasing - slipping downward	OTHR			Patient compliance with good lifestyle choices
1241	52577	Average	Not really changing much	OTHR			self accountability
1301	52577	Average	Not really changing much	OTHR			an individual's desire to be healthier
1302	52577	Average	Not really changing much	OTHR			People failing to take personal responsibility.
1323	52577	Very Good	Increasing - moving up	OTHR			Family Behavior
1379	52577	Good	Not really changing much	POV	INSU		The very poor have a variety of resources if they have very little or no income. The middle class is struggling with no resources. For instance, I am a single parent of two girls working full time. My rent is \$700 a month which i can not afford and my parents have to help me out. I do not qualify for rent or housing assistance as i make too much money. I make too much money for food assistance and my girls do not qualify for free lunches at school. I was able to get them on hawki for secondary insurance to help with medical bills that their dad's insurance does not cover, but recently got a letter that this year I am over the income limit for that. I've lived in this town my entire life and only have needed assistance after my divorce unfortunately. I'm trying to show my girls that Mom works hard to make ends meet for us, but at the same time it's frustrating to watch people move into this town, not get a job and get full assistance. Failure for many people to manage up their own health and some responsibility for such. Also, too much welfare dollars go to Mahaska County residents who are able bodied and choose not to work. This causes for an excess amount of deadbeats in our community who exhaust our resources taking care of them not allowing us the time to spend on helping those who really need it. I see all the time where non local people move to Mahaska County because our county welfare benefits are better than other surrounding counties. This in turn leads to the overall poor health in our community.
1008	50207	Good	Increasing - moving up	POV			People living in Poverty or below Poverty
1147	52577	Good	Not really changing much	POV			



## CHNA 2020 Community Feedback: Mahaska Health Partnership (IA) N= 379

ID	Zip	Overall	Movement	c1	c2	c3	What "new" community health programs should be created to meet current community health needs? Can we partner somehow with others?
1249	52586	Good	Not really changing much	AGE	OTHR		Elderly daycare
1158	52577	Average	Not really changing much	ALL			I think just continue with the improvements and advancements currently being made.
1241	52577	Average	Not really changing much	ALL			There are already enough programs, improve what we have
1332	52577	Good	Increasing - moving up	ALL			I've seen a lot of improvements and searching for more services.
1052	52577	Average	Not really changing much	BH	ACC	PHARM	Very badly need mental health care for young and old, with available for appointments in a timely manner. And medication refills for these people need to be more readily available.
1370	52577	Very Poor	Decreasing - slipping downward	BH	CLIN	STFF	Bring back mental health and every last provider you totally screwed over. Replace walk in clinic staff. No more partnerships to save money. Do your job and do it on your own.
1087	52501	Good	Not really changing much	BH	DERM	RHE	Need to get better access to mental/behavioral health. Work to get visiting specialists here (dermatology, rheumatology, etc)
1304	52577	Poor	Decreasing - slipping downward	BH	DOCS		More mental health providers, consistency with health care providers
1210	52577	Good	Decreasing - slipping downward	BH	DRUG	ALC	Mental health.... drug & alcohol detox services... all three go hand in hand. It would be extremely beneficial to our community if we have these services available & ready for when patients with these illness are ready to get help. Right now their only option is Des Moines.. in a 45 min drive patients w/ these illness can have a change of mind before they even try. Having these services local allows the opportunity for those to get the help they need locally in a familiar & comfortable health care facility.
1363	52577	Very Poor	Not really changing much	BH	DRUG	VIO	Support groups, mental health and substance abuse programs, gender based violence prevention.
1008	50207	Good	Increasing - moving up	BH	EMER	DRUG	Any sort of mental health program would be a plus. Come to the ER on ANY given day and you will see how mental health/psych patients plug up the system slowing down the ability for us to take care of patients with emergent conditions. The mental health aspect in our county is absolutely out of control compared to 15 years ago. This is mainly due to drug and alcohol abuse which is a huge problem in our county.
1223	52577	Good	Decreasing - slipping downward	BH	EMER	DRUG	More mental health emergent care, substance abuse providers,
1159	52577	Poor	Decreasing - slipping downward	BH	FAC		A place to house Mental health cases
1119	52720	Good	Increasing - moving up	BH	HH		There needs to be more screening through the schools for mental health and disabilities. Community Paramedicine program to supplement home health for chronic repeat ER patients that can be managed at home.
1261	52577	Average	Decreasing - slipping downward	BH	KID	CORP	Mental health services for children and their family members. It would be useful to offer the services in the schools for easier access by children.
1219	52577	Good	Increasing - moving up	BH	KID	FAM	More mental health support. More birth to 5 programs and parental education programs.
1054	52543	Good	Not really changing much	BH	KID	SMOK	mental health and how to handle. defiant children training dangers of vaping programs
1078	52577	Poor	Decreasing - slipping downward	BH	PHY	OTHR	anything to increase access to mental health, therapists, support groups
1196	50265	Poor	Decreasing - slipping downward	BH	PHY		You need to increase your number of mental health therapists, medication managers, BHIS providers, in - home family therapists, respite providers, and more. You can partner with Iowa Family Services (515-270-0093), First Resources, and many other providers.
1141	50219	Very Good	Increasing - moving up	BH	VIO		mental health and community violence
1053	52577	Good	Increasing - moving up	BH			Mental health services for all ages is next to impossible in our county.
1059	52577	Average	Not really changing much	BH			mental health
1061	52577	Average	Not really changing much	BH			mental health
1077	52577	Good	Not really changing much	BH			MORE NETWORKING FOR MENTAL HEALTH ISSUES AND MAKING SURE THOSE WHO HAVE THESE ISSUES DON' FELL EMBARRASSED OR SHUNNED.
1147	52577	Good	Not really changing much	BH			We need to find some way to reduce the stigma of mental illness in our community so that people will not be afraid to seek help and that family members get support.
1174	52577	Good	Increasing - moving up	BH			More mental health programs for young people.
1176	52577	Good	Increasing - moving up	BH			We need mental health programs
1177	52577	Average	Not really changing much	BH			Mental Health for teens
1199	52577	Average	Not really changing much	BH			More mental health groups that are open to every one and not just patients through the hospital.
1204	52577	Good	Not really changing much	BH			Mental health.
1218	52577	Very Good	Not really changing much	BH			Mental health services
1270	52577	Average	Decreasing - slipping downward	BH			More Mental Health
1280	52577	Good	Not really changing much	BH			fix the mental health assessment/treatment problem
1285	52577	Good	Not really changing much	BH			More mental health options. Too often, people with mental health needs are sent home because there is no room for them elsewhere.

## CHNA 2020 Community Feedback: Mahaska Health Partnership (IA) N= 379

ID	Zip	Overall	Movement	c1	c2	c3	What "new" community health programs should be created to meet current community health needs? Can we partner somehow with others?
1286	52577	Good	Increasing - moving up	BH			more proactive mental health care efforts and opportunities
1312	52577	Average	Not really changing much	BH			I don't know of any new health programs that need to be created, but our mental health crisis needs to be addressed. As well as the reason so many great providers are leaving our community.
1320	50207	Very Good	Increasing - moving up	BH			Children in our schools with mental health issues that are overwhelming the teachers and administration.
1333	52577	Good	Not really changing much	BH			Mental health is a challenge for all communities
1343	52577	Poor	Decreasing - slipping downward	BH			Mental health programs for ALL ages
1366	52577	Average	Not really changing much	BH			Get more mental health providers. Our kids are in crisis and need help. No kid in crisis should be put on a waiting list for counseling services. We should not have to go out of town.
1245	52577	Average	Not really changing much	CORP	BH		Work with school district to coordinate efforts for mental health services
1324	52577	Good	Not really changing much	CORP	FIT	KID	Partnerships with the new recreation center to encourage community members to improve wellness. Partnerships with MCRF to start walking/biking/running clubs on the trail. partnerships with the childcare to increase healthy activities for the youth. Write more community related grants toward community wide well being
1236	52577	Very Good	Increasing - moving up	CORP	FIT		Partnership with the YMCA for exercise recommendations both weight bearing and in the water.
1282	52577	Good	Increasing - moving up	CORP	MRKT		Engage the community and schools to bring more awareness to services and opportunities to get and maintain a healthy lifestyle.
1256	52577	Poor	Decreasing - slipping downward	CORP	TRAN		need to partner with others that are larger and better able to provide great care. such as making transportation available(at a fee) to travel to other cities for care
1269	52577	Average	Not really changing much	CORP	WELL		Partner with the new Y to provide wellness programs and education.
1018	52577	Average	Decreasing - slipping downward	CORP			Have businesses be more invested in community health
1188	52577	Average	Not really changing much	CORP			Would be nice to partner with iowacity or desmoines hospitals more
1190	50207	Good	Decreasing - slipping downward	CORP			School programs regarding vaping; mental health services need to partner with schools and provide assistance/education daily.
1037	52501	Good	Not really changing much	DENT	BH		dental and mental health services.
1090	52577	Good	Increasing - moving up	DIAB	SPEC	ENDO	Diabetes Specialist. Diabetes and Endocrinology
1307		Very Good	Increasing - moving up	DIAL			Dialysis
1183	52577	Poor	Not really changing much	DOCS	CORP		Linking more healthcare professionals with our schools would be ideal.
1150	52577	Average	Decreasing - slipping downward	DOCS	SPEC		More doctors and specialty care
1151	52577	Poor	Decreasing - slipping downward	DOCS			Yes, I feel we need to partner with Mercy or someone that can bring in doctors to meet the needs.
1255	52577	Good	Not really changing much	DOCS			Retaining providers in our community.
1346	52577	Poor	Decreasing - slipping downward	DOCS			Doctor retention.
1355	50207	Very Poor	Decreasing - slipping downward	DOCS			Get real doctors
1057	52501	Very Good	Increasing - moving up	DRUG	ALC	KID	drug and alcohol programs, help with children of drug addicted moms
1153	52577	Average	Increasing - moving up	DUP			partnering is usually good and duplication is usually not.
1155	52577	Average	Not really changing much	DUP			partnering is usually good, duplication usually is not.
1323	52577	Very Good	Increasing - moving up	ECON			Local Businesses
1265	52577	Very Good	Not really changing much	FAM	FEM		Family Planning Title X services for women and men- provide reproductive health services- on a sliding fee scale or free as part of Family Planning Program. Contraception, pregnancy tests, STD/HIV testing/treatment/referral for treatment and prevention, evaluation of reproductive issues.
1111	52577	Good	Decreasing - slipping downward	FAM			Family Planning services. Not Planned Parenthood. There was a FP in Ottumwa but because of funding it was closed. It provided services that were and are badly needed for Ottumwa and 8 other surrounding counties.
1181	52577	Good	Not really changing much	FEM	OBES		Women's Health Programs Programs assisting with obesity/healthy weight loss
1300		Poor	Not really changing much	FEM	STD	FAM	women's health, STI's, birth control/prevention education, mental health
1047	52577	Very Good	Increasing - moving up	FIT	OTHR		Would like to see exercise/health activities gender specific with gender growth, mentoring older and younger for spiritual and personal growth, outside of church setting and gathering into the community. Such as hikes with some spiritual emphases.
1365	52577	Average	Not really changing much	FIT	REC	POV	Affordable gym options (Planet Fitness); The walking/bike path is great but there is poor signage...which path continues, which goes into residential area, etc?; To stay healthy seems to a very expensive endeavour in Oskaloosa, but I know income levels are not great here too...so there seems to be a disconnect with that
1246	52577	Average	Not really changing much	FIT	WELL	NUTR	How to teach people to eat healthy so they aren't obese. Have less junk food available in the community.
1079	52553	Good	Increasing - moving up	FIT			Better Wellness Program expand YMCA
1091	52501	Good	Increasing - moving up	FIT			Affordable place to exercise.

## CHNA 2020 Community Feedback: Mahaska Health Partnership (IA) N= 379

ID	Zip	Overall	Movement	c1	c2	c3	What "new" community health programs should be created to meet current community health needs? Can we partner somehow with others?
1197	52577	Average	Decreasing - slipping downward	FIT			Active Community Initiative like Ottumwa has that offers free workouts etc. at times that working people can participate
1337	52577	Very Good	Increasing - moving up	FIT			Fitness with Williams Penn or YMCA
1043	52550	Average	Not really changing much	GER			Doctors who specialize in treating folks 50 and older.
1351	52577	Very Poor	Decreasing - slipping downward	HOSP	FAC	DOCS	A bigger hospital like unity point! Get rid of certain Drs not doing the job but bring the money their pay check in but do not show quality care to patients! Bring back old mental health before suicide rate goes up more and more crime what there was before was not broken or needed fixed now it's a disgrace
1081	52501	Good	Not really changing much	IP	BH		Inpatient Mental Health services are needed.
1173	52577	Average	Not really changing much	IP	FAC	BH	We need more inpatient facilities for mental health needs.
1142	52563	Very Good	Increasing - moving up	KID	FIT	BH	Early child intervention with health, physical and mental.
1113	52577	Good	Increasing - moving up	KID			More summer programs for children
1275	52577	Good	Decreasing - slipping downward	KID			Quality, affordability and accessible child care is a growing community need and will not be eliminated with the new Y facility. Families are already experiencing critical needs in this area.
1163	52577	Good	Not really changing much	MAN			Probably need to become an affiliate of a bigger network
1202	52577	Good	Increasing - moving up	MRKT			Perhaps the results of this survey may identify areas that need to be addressed. There used to be a publication sent with the newspaper and or mail. Since that is no longer available, people may not be aware that services are available. Social media is another means to communicate information to the public.
1301	52577	Average	Not really changing much	MRKT			awareness of how these areas of health can make individuals' lives happier, more productive and help with a variety of finances
1035	52577	Very Good	Increasing - moving up	NH	DRUG	FAM	Partner with nursing homes to better address the elderly support, have discussions with DHS per substance abuse and family support, child welfare and safety, Educate the community by being visible and knowledgeable.
1278	52577	Very Good	Not really changing much	NUTR	FIT		Health promotions for diet and exercise programs.
1005	52577	Average	Not really changing much	NUTR			better food choices offered at grocery locations (dangers of processed foods and chemicals)
1314	52561	Average	Increasing - moving up	OBES	CLIN		weight loss programs and clinics.
1137	52577	Good	Not really changing much	OBES	DERM	BH	obesity help Dermatology Mental Health services
1160	52577	Poor	Decreasing - slipping downward	OTHR	PHY	DRUG	Social-Emotional Health programs for all ages, Voc. Rehab. for those on assistance/drug/alcohol addictions, family counseling.
1063	50207	Very Good	Increasing - moving up	OTHR			It takes everyone in the community to focus on health and wellness.
1096	52577	Good	Not really changing much	OTHR			5-2-1-0 would be a good program to have out in the community. It's happening at the middle school level but could be more places and talked about even more
1206	52577	Good	Not really changing much	OTHR			Diversity appreciation and awareness
1272	52577	Good	Not really changing much	OTHR			Shoes...employees are always complaining about not having comfortable shoes along with patients that have surgery and not having proper footwear when rehabbing!
1299	52577	Good	Increasing - moving up	OTHR			See what other communities are doing and build from their experiences.
1353	52577	Very Poor	Decreasing - slipping downward	OTHR			Fix what you have first before adding new
1374	52577	Very Poor	Decreasing - slipping downward	OTHR			We don't need anything "new" until we improve the quality of our health services. New services and new construction don't achieve anything if the base quality is defective.
1379	52577	Good	Not really changing much	OTHR			I guess seeing some type of programs for the "middle class" of hard working town citizens struggling to make ends meet.
1287	52577	Average	Decreasing - slipping downward	PEDS	ENDO	DRUG	Working with pediatric endocrinology, services for drug counseling/abuse teaching....other than at SIEDA. Mental health is huge, in the fact that a provider is from New York and orders highly potent medications and then cannot even sign the orders, but uses a stamper by the nurse. That is ethically wrong and not legal.
1328	50027	Average	Not really changing much	POV	VAST	DIAB	Homeless Shelters, Blood pressure clinics, blood sugar testing clinics maybe, etc.
1268	52577	Good	Not really changing much	POV			Recognize and treat health care needs of the homeless in the community/mental health, etc.
1344	50027	Average	Not really changing much	POV			Homeless resources for Mahaska County. Not just for women and children either.
1321	52501	Good	Not really changing much	PREV	CORP		Prevention & treatment programs are always useful within communities and partnering with others can bring diversity and education to help strengthen a community.
1302	52577	Average	Not really changing much	PREV	WELL	NUTR	There needs to be a focus on addressing causes of problems instead of simply reacting with drugs, etc. Nutrition and gut health focus, coupled with personal discipline, could dramatically reduce or solve many situations. I know because I've done it. If you're going to partner with others, you will need to be open to what I just said; my experience with traditional healthcare perspective is that drugs are the answer, and that needs to be challenged.
1220	50044	Good	Increasing - moving up	PREV	WELL		More about prevention and education.

### CHNA 2020 Community Feedback: Mahaska Health Partnership (IA) N= 379

ID	Zip	Overall	Movement	c1	c2	c3	What "new" community health programs should be created to meet current community health needs? Can we partner somehow with others?
1192	52595	Average	Decreasing - slipping downward	PRIM	BH	ORTH	Primary care doctors in independent clinics from MHP. I think all eggs in one basket is not good, I would like to see other options for primary care for adults. Pella has 2 different orthopedic services that are available as well. I think we need mental health services, but for low income.
1130	52577	Good	Not really changing much	PSY			More psychiatric services
1298	52595	Good	Increasing - moving up	SMOK	WELL	CORP	Vaping with young people in schools - helping them to understand the negative impacts and helping their primary care givers to understand the negative impact as well.
1186	52577	Good	Not really changing much	SMOK	WELL		vaping education for families and youth
1277	52577	Average	Not really changing much	SPEC			I don't know what already exists, but I have to drive way to far for specialists.
1123	52577	Good	Decreasing - slipping downward	URG	MRKT		Increased access to urgent care/walk-in clinic or education on what is available.
1208	52577	Good	Not really changing much	WELL	NUTR	FIT	Public programming for various age groups. Layered dietary/physical education opportunities without the influence of (school) sports
1115	52577	Average	Decreasing - slipping downward	WELL			Men's and Women's health fairs.
1129	52553	Good	Not really changing much	WELL			A Q and A page or thread that can be overseen by provider(s) where education for viruses, fevers, diabetes, nausea, vomiting and other current ailments can be seen and followed and by our community patients. Q and A out in the community covering basic questions about diabetes, heart health. General education available out in the public.
1281	52577	Average	Decreasing - slipping downward	WELL			Education for all not just kids. Kids feed off of parents behavior.
1201	52554	Very Good	Decreasing - slipping downward	WIC	POV		Food program for low income families outside of school setting
1148	52501	Good	Increasing - moving up	WIC			New partnership between WIC and MHP is working well.

## Let Your Voice Be Heard!

**Mahaska Health Partnership and Mahaska Public Health are partnering with area providers to update the 2017 Mahaska County, IA Community Health Needs Assessment (CHNA). To collect current community feedback, a short online survey has been created to uncover any current community health issues and evaluate local health delivery.**

**While your participation is voluntary and confidential, all community input is valued. Thank you for your attention! Deadline to participate is Friday, February 21, 2020.**

1. In your opinion, how would you rate the "Overall Quality" of healthcare delivery in our community?

☐ Very Poor ☐ Poor ☐ Average ☐ Good ☐ Very Good

2. When considering "overall community health quality", it is ...

☐ Increasing - moving up ☐ Decreasing - slipping downward  
☐ Not really changing much

Why? (please specify)

3. In your opinion, are there any healthcare services or delivery issues that you feel need to be improved, worked on and/or changed? (Please be specific.)

4. In your own words, what is the general community perception of healthcare providers (i.e. hospitals, doctors, public health, etc.) serving our community? (Please be specific.)

5. From past health assessments of our community, a number of health needs were identified as priorities. Are any of these an ongoing problem for our community? Please select all that apply.

- |  |  |
|--|--|
| <input type="checkbox"/> Obesity                         | <input type="checkbox"/> Access to Primary Care              |
| <input type="checkbox"/> Safe Rental Housing             | <input type="checkbox"/> Dental Providers accepting Medicaid |
| <input type="checkbox"/> Smoking                         | <input type="checkbox"/> Knowledge of Healthcare Services    |
| <input type="checkbox"/> Mental Health                   | <input type="checkbox"/> Out of Area Access to Care          |
| <input type="checkbox"/> Sexually Transmitted Infections | <input type="checkbox"/> Providers / Visiting Specialists    |

6. Which past health assessment of our community need is NOW the "most pressing" for improvement? Please select top THREE.

- |  |  |
|--|--|
| <input type="checkbox"/> Obesity                         | <input type="checkbox"/> Access to Primary Care              |
| <input type="checkbox"/> Safe Rental Housing             | <input type="checkbox"/> Dental Providers accepting Medicaid |
| <input type="checkbox"/> Smoking                         | <input type="checkbox"/> Knowledge of Healthcare Services    |
| <input type="checkbox"/> Mental Health                   | <input type="checkbox"/> Out of Area Access to Care          |
| <input type="checkbox"/> Sexually Transmitted Infections | <input type="checkbox"/> Providers / Visiting Specialists    |

7. In your opinion, what are the root causes of "poor health" in our community? Please select top THREE.

- |   |  |
|---|--|
| <input type="checkbox"/> Health & wellness education                | <input type="checkbox"/> Elder assistance programs                                     |
| <input type="checkbox"/> Chronic disease prevention                 | <input type="checkbox"/> Family assistance programs                                    |
| <input type="checkbox"/> Limited access to mental health assistance | <input type="checkbox"/> Awareness of existing local programs, providers, and services |
| <input type="checkbox"/> Case management assistance                 | <input type="checkbox"/> Finance & Insurance coverage                                  |

Other (please specify)

8. How would our community area residents rate each of the following health services?

	Very Good	Good	Fair	Poor	Very Poor
Ambulance Services	<input type="radio"/>	<input type="radio"/>	<input type="radio"/>	<input type="radio"/>	<input type="radio"/>
Child Care	<input type="radio"/>	<input type="radio"/>	<input type="radio"/>	<input type="radio"/>	<input type="radio"/>
Chiropractors	<input type="radio"/>	<input type="radio"/>	<input type="radio"/>	<input type="radio"/>	<input type="radio"/>
Dentists	<input type="radio"/>	<input type="radio"/>	<input type="radio"/>	<input type="radio"/>	<input type="radio"/>
Emergency Room	<input type="radio"/>	<input type="radio"/>	<input type="radio"/>	<input type="radio"/>	<input type="radio"/>
Eye Doctor/Optometrlist	<input type="radio"/>	<input type="radio"/>	<input type="radio"/>	<input type="radio"/>	<input type="radio"/>
Family Planning Services	<input type="radio"/>	<input type="radio"/>	<input type="radio"/>	<input type="radio"/>	<input type="radio"/>
Home Health	<input type="radio"/>	<input type="radio"/>	<input type="radio"/>	<input type="radio"/>	<input type="radio"/>
Hospice	<input type="radio"/>	<input type="radio"/>	<input type="radio"/>	<input type="radio"/>	<input type="radio"/>

9. How would our community area residents rate each of the following health services? Continued.

	Very Good	Good	Fair	Poor	Very Poor
Inpatient Services	<input type="radio"/>	<input type="radio"/>	<input type="radio"/>	<input type="radio"/>	<input type="radio"/>
Mental Health	<input type="radio"/>	<input type="radio"/>	<input type="radio"/>	<input type="radio"/>	<input type="radio"/>
Nursing Home	<input type="radio"/>	<input type="radio"/>	<input type="radio"/>	<input type="radio"/>	<input type="radio"/>
Outpatient Services	<input type="radio"/>	<input type="radio"/>	<input type="radio"/>	<input type="radio"/>	<input type="radio"/>
Pharmacy	<input type="radio"/>	<input type="radio"/>	<input type="radio"/>	<input type="radio"/>	<input type="radio"/>
Physician Clinics	<input type="radio"/>	<input type="radio"/>	<input type="radio"/>	<input type="radio"/>	<input type="radio"/>
Public Health	<input type="radio"/>	<input type="radio"/>	<input type="radio"/>	<input type="radio"/>	<input type="radio"/>
School Nurse	<input type="radio"/>	<input type="radio"/>	<input type="radio"/>	<input type="radio"/>	<input type="radio"/>
Specialists/Medical Providers	<input type="radio"/>	<input type="radio"/>	<input type="radio"/>	<input type="radio"/>	<input type="radio"/>

10. Community Health Readiness is vital. How would you rate each of the following?

	Very Good	Good	Fair	Poor	Very Poor
Early Childhood Development Programs	<input type="radio"/>	<input type="radio"/>	<input type="radio"/>	<input type="radio"/>	<input type="radio"/>
Emergency Preparedness	<input type="radio"/>	<input type="radio"/>	<input type="radio"/>	<input type="radio"/>	<input type="radio"/>
Food and Nutrition Services/Education	<input type="radio"/>	<input type="radio"/>	<input type="radio"/>	<input type="radio"/>	<input type="radio"/>
Poverty/Financial Health	<input type="radio"/>	<input type="radio"/>	<input type="radio"/>	<input type="radio"/>	<input type="radio"/>
Health Screenings (such as asthma, hearing, vision, wellness)	<input type="radio"/>	<input type="radio"/>	<input type="radio"/>	<input type="radio"/>	<input type="radio"/>
Immunization Programs	<input type="radio"/>	<input type="radio"/>	<input type="radio"/>	<input type="radio"/>	<input type="radio"/>
Obesity Prevention & Treatment	<input type="radio"/>	<input type="radio"/>	<input type="radio"/>	<input type="radio"/>	<input type="radio"/>



11. Community Health Readiness is vital. How would you rate each of the following? Continued.

	Very Good	Good	Fair	Poor	Very Poor
Spiritual Health Support	<input type="radio"/>	<input type="radio"/>	<input type="radio"/>	<input type="radio"/>	<input type="radio"/>
Prenatal / Child Health Programs	<input type="radio"/>	<input type="radio"/>	<input type="radio"/>	<input type="radio"/>	<input type="radio"/>
Sexually Transmitted Disease Testing	<input type="radio"/>	<input type="radio"/>	<input type="radio"/>	<input type="radio"/>	<input type="radio"/>
Substance Use Treatment & Education	<input type="radio"/>	<input type="radio"/>	<input type="radio"/>	<input type="radio"/>	<input type="radio"/>
Tobacco Prevention & Cessation Programs	<input type="radio"/>	<input type="radio"/>	<input type="radio"/>	<input type="radio"/>	<input type="radio"/>
Violence Prevention	<input type="radio"/>	<input type="radio"/>	<input type="radio"/>	<input type="radio"/>	<input type="radio"/>
Women's Wellness Programs	<input type="radio"/>	<input type="radio"/>	<input type="radio"/>	<input type="radio"/>	<input type="radio"/>
WIC Nutrition Program	<input type="radio"/>	<input type="radio"/>	<input type="radio"/>	<input type="radio"/>	<input type="radio"/>

12. In the past 2 years, did you or someone you know receive healthcare services outside of our community?

- ☐ Yes ☐ I don't know
- ☐ No

If YES, please specify the healthcare services received.

13. Are our healthcare organizations, providers and community members actively working together to address/improve health in our community?

- ☐ Yes ☐ I don't know
- ☐ No

Please explain

14. What "new" community health programs should be created to meet current community health needs?  
Can we partner somehow with others?

15. Are there any other health needs (listed below) that need to be discussed further at our upcoming CHNA Town Hall meeting? (Please select all that apply.)

- |  |   |  |
|--|---|--|
| <input type="checkbox"/> Abuse/Violence                    | <input type="checkbox"/> Lead Exposure            | <input type="checkbox"/> Sexually Transmitted Diseases |
| <input type="checkbox"/> Alcohol                           | <input type="checkbox"/> Mental Illness           | <input type="checkbox"/> Smoke-Free Workplace          |
| <input type="checkbox"/> Breast Feeding Friendly Workplace | <input type="checkbox"/> Nutrition/Access to Food | <input type="checkbox"/> Suicide                       |
| <input type="checkbox"/> Cancer                            | <input type="checkbox"/> Obesity                  | <input type="checkbox"/> Teen Pregnancy                |
| <input type="checkbox"/> Diabetes                          | <input type="checkbox"/> Environmental health     | <input type="checkbox"/> Tobacco Use                   |
| <input type="checkbox"/> Drugs/Substance Abuse             | <input type="checkbox"/> Physical Exercise        | <input type="checkbox"/> Vaccinations                  |
| <input type="checkbox"/> Family Planning                   | <input type="checkbox"/> Poverty                  | <input type="checkbox"/> Water Quality                 |
| <input type="checkbox"/> Heart Disease                     | <input type="checkbox"/> Lung Disease             | <input type="checkbox"/> Wellness Education            |

Other (please specify)

16. For reporting purposes, are you involved in or are you a .... ? (Please select all that apply.)

- |  |   |  |
|--|---|--|
| <input type="checkbox"/> Business / Merchant                 | <input type="checkbox"/> EMS / Emergency        | <input type="checkbox"/> Other Health Professional |
| <input type="checkbox"/> Community Board Member              | <input type="checkbox"/> Farmer / Rancher       | <input type="checkbox"/> Parent / Caregiver        |
| <input type="checkbox"/> Case Manager / Discharge Planner    | <input type="checkbox"/> Hospital / Health Dept | <input type="checkbox"/> Pharmacy / Clinic         |
| <input type="checkbox"/> Clergy                              | <input type="checkbox"/> Housing / Builder      | <input type="checkbox"/> Media (Paper/TV/Radio)    |
| <input type="checkbox"/> College / University                | <input type="checkbox"/> Insurance              | <input type="checkbox"/> Senior Care               |
| <input type="checkbox"/> Consumer Advocate                   | <input type="checkbox"/> Labor                  | <input type="checkbox"/> Teacher / School Admin    |
| <input type="checkbox"/> Dentist / Eye Doctor / Chiropractor | <input type="checkbox"/> Law Enforcement        | <input type="checkbox"/> Veteran                   |
| <input type="checkbox"/> Elected Official - City/County      | <input type="checkbox"/> Mental Health          | <input type="checkbox"/> Unemployed                |

Other (please specify)

17. What is your home ZIP code? Please enter 5-digit ZIP code; for example 00544 or 95305

By Selecting "DONE" you will give others the opportunity to take the same survey.



## VVV Consultants LLC

**Vince Vandehaar, MBA**

*Principal & Adjunct Professor*

(913) 302-7264 (C)

VVV@VandehaarMarketing.com

**Tessa E. Taylor, BBA BA**

*Lead Consultant*

(920) 250-3722 (C)

TET@VandehaarMarketing.com

Office:

601 N Mahaffie, Olathe, KS 66061

<http://vandehaarmarketing.com/>

**VVV Consultants LLC** is an Olathe, KS based “boutique” healthcare consulting firm specializing in Strategy; Research and Business Development services. We partner with clients. Plan the Work; Work the Plan