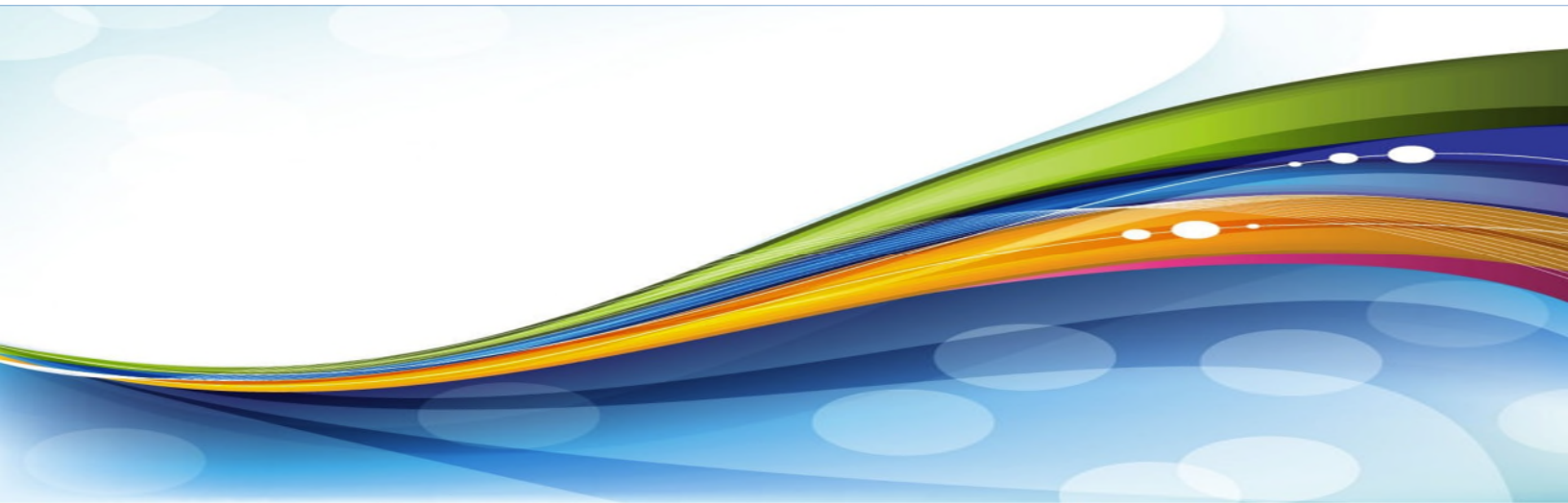




**Mahaska Health Partnership - PSA
Mahaska County, Iowa
Community Health Needs Assessment**



February 2017

**VVV Consultants LLC
Olathe, KS**

Community Health Needs Assessment

Table of Contents

I. Executive Summary

II. Methodology P9

- a) CHNA Scope and Purpose
- b) Local Collaborating CHNA Parties *(The identity of any and all organizations with which the organization collaborated and third parties that engaged to assist with the CHNA)*
- c) CHNA and Town Hall Research Process *(A description of the process and methods used to conduct the CHNA, a description of how the organization considered the input of persons representing the community, and an explanation of the process / criteria used in prioritizing such needs)*
- d) Community Profile *(A description of the community served by the facility and how the community was determined)*

III. Community Health Status P32

- a) Historical Health Statistics (Secondary Research)
- b) Community Feedback Research

IV. Inventory of Existing County Health Resources P47

- a) *A description of the existing healthcare facilities and other resources within the community available to meet the needs identified through the CHNA*

V. Detail Exhibits P67

- a) Patient Origin and Access to Care
 - b) Town Hall Attendees, Notes and Feedback *(Who attended with qualifications)*
 - c) Public Notice and News
 - d) Primary Research Detail
-

I. Executive Summary

[VVV Consultants LLC]

I. Executive Summary

Mahaska Health Partnership (Primary Service Area) - 2017 Community Health Needs Assessment (CHNA)

Creating healthy communities requires a high level of mutual understanding and collaboration among community leaders. The development of this assessment brings together community health leaders and providers, along with local residents, to research and prioritize county health needs and document community health delivery successes. This health assessment will serve as the foundation for community health improvement efforts for the next three years. The last CHNA for Mahaska Health Partnership (Primary Service Area) was published in February 2016. This assessment was coordinated and produced by Mahaska Health Partnership Public Health under the direction of Patty Malloy. The Patient Protection and Affordable Care Act (ACA) requires not-for-profit hospitals to conduct a CHNA every three years and adopt an implementation strategy to meet the needs identified by the CHNA. Also, for health departments that are preparing to apply for accreditation, the Public Health Accreditation Board (PHAB) recommends working diligently on a Community Health Assessment and Community Health Improvement Plan.

The new 2017 assessment was coordinated and produced by VVV Consultants LLC (Olathe, Kansas) under the direction of Vince Vandehaar, MBA. The CHNA provides benefits to local health service organizations, the hospital, the public health department, as well as the community, in the following ways: 1) Increases knowledge of community health needs and resources; 2) Creates a common understanding of the priorities of the community's health needs; 3) Enhances relationships and mutual understanding between and among stakeholders; 4) Provides a basis upon which community stakeholders can make decisions about how they can contribute to improving the health of the community; 5) Provides rationale for current and potential funders to support efforts to improve the health of the community; 6) Creates opportunities for collaboration in delivery of services to the community; and 7) Provides guidance to the hospital and local health department for how they can align their services and community benefit programs to best meet needs.

CHNA Town Hall "Community Health Strengths" cited for Mahaska Health Partnership (Primary Service Area) are as follows:

Mahaska Health Partnership (Primary Service Area) - "Community Health Strengths"			
#	Topic	#	Topic
1	Walking trail / sports complex	10	Engaged community
2	Mental health provider ratio	11	Having OB deliveries at MHP
3	Scope of services offered at MHP	12	A blue zone community
4	Chiropractors	13	Relationships with providers
5	Facility / equipment updates at MHP	14	Have a clinic at William Penn
6	Hospice services	15	Transportation
7	School nurses	16	Wellness educator on staff at MHP
8	Happiness with services at MHP	17	Extended walk-in hours
9	Crisis intervention program	18	Ambulance

Town Hall “Community Health Changes and/or Improvements” cited for Mahaska Health Partnership (Primary Service Area) are as follows:

Community Health Needs Assessment - Town Hall Priorities 2017				
Mahaska Health Partnership - PSA (47 Attendees, 168 Votes)				
#	Health Needs to Change and/or Improve	Votes	%	Accum
1	Obesity (Nutrition & Fitness)	22	13.1%	13.1%
2	Safe Rental Housing	20	11.9%	36.3%
3	Smoking	19	11.3%	24.4%
4	Mental Health (Access, Diagnosis & Placement)	16	9.5%	45.8%
5	Sexually Transmitted Infections	14	8.3%	54.2%
6	Access to Primary Care (Wait Times)	12	7.1%	61.3%
7	Dental Providers Accepting Medicaid	11	6.5%	67.9%
8	Knowledge of Healthcare Services (Including Signage)	9	5.4%	73.2%
9	Out of Area Access (Leaving Mahaska County for Care)	9	5.4%	78.6%
10	Providers (CV, Derm, Endo, ENT, OB/GYN & Peds)	8	4.8%	83.3%
	Total Town Hall Votes	168	100.0%	
	Other Items Noted: Walk-In Clinic Process, Access to Alternative Medicine, Excessive Drinking, Access to Organic Fruits & Vegetables, Crisis Intervention for Men, Patient Advocates, First Responders in Rural Mahaska County.			

Key Community Health Needs Assessment Conclusions from secondary research for Mahaska Health Partnership (Primary Service Area) are as follows:

IOWA HEALTH RANKINGS: Per the 2016 RWJ County Health Rankings study, Mahaska Health Partnership (Primary Service Area) (Mahaska County, Iowa) had the highest State of Iowa ranking (of 99 counties) in Physical Environment.

TAB 1. Demographic Profile
TAB 2. Economic/Business Profile
TAB 3. Educational Profile
TAB 4. Maternal and Infant Health Profile
TAB 5. Hospitalization / Providers Profile
TAB 6. Behavioral Health Profile
TAB 7. Risk Indicators & Factors
TAB 8. Uninsured Profile
TAB 9. Mortality Profile
TAB 10. Preventative Quality Measures

- TAB 1: Mahaska County has a population of 22,324 residents as of July 1, 2015, higher than the Iowa Rural Norm of 14,307. The percent change in population in Mahaska County from April 1, 2010 to July 1, 2015 is -0.3%, lower than the Iowa Rural Norm of -2.1%. The percent of persons 65 years and over in Mahaska County is 17.2%, lower than the Iowa Rural Norm of 20.5%. The percent of persons age 5+ years in Mahaska County where a language other than English is spoken at home is 2.4%, lower than the Iowa Rural Norm of 4.6%. The population per square mile in Mahaska County is 39.2, higher than the Iowa Rural Norm of 25.6. Mahaska County is 52.0% rural, lower than the Iowa Rural Norm of 72.0%. The percent of persons in poverty in Mahaska County is 14.4%, higher than the Iowa Rural Norm of 12.1%. The percent of children in poverty in Mahaska County is 16.0%, lower than the Iowa Rural Norm of 18.1%. There are 1,394 veterans in Mahaska County, higher than the Iowa Rural Norm of 1,039. There are 15,214 registered voters in Mahaska County, higher than the Iowa Rural Norm of 10,307.
- TAB 2: The number of housing units in Mahaska County is 9,802, higher than the Iowa Rural Norm of 6,687. The owner-occupied housing unit rate in Mahaska County is 70.3, lower than the Iowa Rural Norm of 75.4. The median value of owner-occupied housing units in Mahaska County is \$106,200, higher than the Iowa Rural Norm of \$101,056. The total number of households in Mahaska County is 9,023, higher than the Iowa Rural Norm of 5,855. The percent of severe housing problems in Mahaska County is 12.0%, higher than the Iowa Rural Norm of 10.7%. The percent of persons age 1 year+ in Mahaska County living in the same house as one year ago is 84.9%, lower than the Iowa Rural Norm of 87.8%. The percent of persons in Mahaska County who are low income and have low access to stores is 7.8%, higher than the Iowa Rural Norm of 5.4%. The percent of seniors in Mahaska County who are low income and have low access to stores is 4.2%, higher than the Iowa Rural Norm of 2.9%. The total number of all firms in Mahaska County is 1,839, higher than the Iowa Rural Norm of 1,364.
- TAB 3: The percent of children eligible for free lunch in Mahaska County is 27.0%, lower than the Iowa Rural Norm of 32.8%. The percent of persons age 25 years+ in Mahaska County with a Bachelor's degree or higher is 22.7%, higher than the Iowa Rural Norm of 19.5%.
- TAB 4: The rate per 1,000 of mothers who began prenatal care began in the first trimester in Mahaska County is 478.0, higher than the Iowa Rural Norm of 272.4. The rate per 1,000 of mothers who smoked during pregnancy in Mahaska County is 120.0, higher than the Iowa Rural Norm of 61.6. The percent of live births that are preterm (less than 37 weeks gestation) in Mahaska County is 9.0%, lower than the Iowa Rural Norm of 11.3%. The live birth rate for mothers under age 20 per 1,000 live births in Mahaska County is 29.1, lower than the Iowa Rural Norm of 46.3. The out-of-wedlock birth rate per 1,000 live births in Mahaska County is 323.6.0, lower than the Iowa Rural Norm of 331.6.
- TAB 5: The ratio of primary care physicians to population in Mahaska County is 1,320:1, lower than the Iowa Rural Norm of 1,993:1. The ratio of dentists to population in Mahaska County is 2,490:1, lower than the Iowa Rural Norm of 3,244:1. The percent of patients in Mahaska County who gave their hospital a rating of nine or 10 on a scale from zero (lowest) to 10 (highest) is 81.0%, higher than the Iowa Rural Norm of 77.1%.

The percent of patients in Mahaska County who reported yes, they would definitely recommend the hospital is 78.0%, higher than the Iowa Rural Norm of 73.2%.

- TAB 6: The percent of children in single-parent households in Mahaska County is 27.0%, lower than the Iowa Rural Norm of 25.7%. The ratio of mental health providers to population in Mahaska County is 860:1, lower than the Iowa Rural Norm of 2,819:1. The violent crime rate per 100,000 in Mahaska County is 241.0, higher than the Iowa Rural Norm of 151.6. The percent of alcohol-impaired driving deaths in Mahaska County is 16.0%, lower than the Iowa Rural Norm of 22.9%.
- TAB 7: The percent of adult smoking in Mahaska County is 19.0%, higher than the Iowa Rural Norm of 17.1%. The percent of physical inactivity in Mahaska County is 26.0%, lower than the Iowa Rural Norm of 28.1%. The percent of excessive drinking in Mahaska County is 20.0%, higher than the Iowa Rural Norm of 18.8%. The rate of sexually transmitted infections per 100,000 in Mahaska County is 303.0, higher than the Iowa Rural Norm of 193.1. The percent of residents in Mahaska County with a long commute driving alone is 17.0%, lower than the Iowa Rural Norm of 25.1%. The percent of Medicare beneficiaries in Mahaska County with Arthritis is 25.8%, lower than the Iowa Rural Norm of 27.4%. The percent of Medicare beneficiaries in Mahaska County with Chronic Obstructive Pulmonary Disease (COPD) is 8.1%, lower than the Iowa Rural Norm of 10.9%. The percent of Medicare beneficiaries in Mahaska County with high cholesterol is 31.2%, lower than the Iowa Rural Norm of 41.2%. The percent of Medicare beneficiaries in Mahaska County with Diabetes is 22.4%, lower than the Iowa Rural Norm of 24.8%. The percent of Medicare beneficiaries in Mahaska County with high blood pressure is 43.8%, lower than the Iowa Rural Norm of 53.3%. The percent of Medicare beneficiaries in Mahaska County with Ischemic Heart Disease is 23.5%, lower than the Iowa Rural Norm of 25.6%. The percent of Medicare beneficiaries in Mahaska County with Hypertension is 46.9%, lower than the Iowa Rural Norm of 53.1%. The percent of Medicare beneficiaries in Mahaska County with Chronic Kidney Disease is 10.9%, lower than the Iowa Rural Norm of 13.7%.
- TAB 8: The percent of residents uninsured in Mahaska County is 9.0%, lower than the Iowa Rural Norm of 10.7%.
- TAB 9: The premature death years of potential life lost rate in Mahaska County is 5,700.0, lower than the Iowa Rural Norm of 6,700.0. The Major Cardiovascular Disease death rate in Mahaska County is 255.3, lower than the Iowa Rural Norm of 392.4. The Chronic Lower Respiratory Disease death rate in Mahaska County is 53.8, lower than the Iowa Rural Norm of 80.5. The unintentional injuries death rate in Mahaska County is 94.1, higher than the Iowa Rural Norm of 71.5. The suicide death rate in Mahaska County is 9.5, lower than the Iowa Rural Norm of 12.8.
- TAB 10: The percent of access to exercise opportunities in Mahaska County is 66.0%, higher than the Iowa Rural Norm of 57.6%. The percent of diabetic monitoring in Mahaska County is 86.0%, lower than the Iowa Rural Norm of 88.4%. The percent of mammography screenings in Mahaska County is 71.0%, higher than the Iowa Rural Norm of 63.7%.

Key 2017 Community Feedback Conclusions

In December 2016, Mahaska Health Partnership collected stakeholder feedback from their primary service area consumers, community leaders and groups, public and other organizations, and other providers. These stakeholders (N=247) provided the following community feedback insights via an online perception survey:

- 64.8% of Mahaska County stakeholders would rate the overall quality of healthcare delivery in their community as either Very Good or Good, with Very Good being the highest ranking.
- Mahaska County stakeholders are satisfied with the following services: Ambulance, Hospice and Public Health Department.
- Mahaska County stakeholders are not satisfied with the following services: Emergency Room, Family Planning Services, Home Health, Mental Health Services, Outpatient Services, School Nurse and Specialists.
- 82.3% of Mahaska County stakeholders have received healthcare services outside of their community over the past two years.
- Mahaska County stakeholders perceive the following causes of disease or disability a problem in their community: Mental Illness, Poverty, Sexually Transmitted Infections and Wellness.

As seen below, the community still senses a health need for Mental Health, Violence and Domestic Abuse, Obesity (Physical Activity and Healthy Foods), Health Insurance and Alcohol.

Mahaska Health Partnership (Primary Service Area) - Oskaloosa, IA N=247						
3. From our previous CHNA, a number of health needs were identified as priorities. Are any of these previous CHNA needs still an "Ongoing Problem" in the Mahaska Health Partnership Primary Service Area?						
Answer Options	Not a Problem Anymore	Somewhat of a Problem	Major Problem	Problem %	Response Count	Most Pressing Rank
Mental Health	10	50	101	93.8%	161	1
Violence and Domestic Abuse	11	108	36	92.9%	155	4
Obesity (Physical Activity and Healthy Foods)	14	64	80	91.1%	158	2
Health Insurance	19	75	69	88.3%	163	3
Alcohol	25	92	41	84.2%	158	5
Disease Control and Surveillance	46	95	16	70.7%	157	7
Environmental Hazards (Air, Safety, Water, etc.)	52	80	25	66.9%	157	6
Prevent Injuries (Disability, Brain Injury and Falls)	53	85	16	65.6%	154	10
Health Transportation	58	69	27	62.3%	154	8
Health Emergencies and Communication	63	72	21	59.6%	156	8
Public Emergencies Communication	63	76	15	59.1%	154	11
Immunizations and Vaccinations	95	54	8	39.5%	157	12

II. Methodology

[VVV Consultants LLC]

II. Methodology

a) Scope and Purpose

The new federal Patient Protection and Affordable Care Act requires that each registered 501(c)3 hospital conduct a Community Health Needs Assessment (CHNA) at least once every three years and adopt a strategy to meet community health needs. Any hospital who has filed a 990 is required to conduct a CHNA. IRS Notice 2011-52 was released in late fall of 2011 to give notice and request comments.

JOB #1: Meet/Report IRS 990 Required Documentation

1. A description of the community served by the facility and how the community was determined;
2. A description of the process and methods used to conduct the CHNA;
3. The identity of any and all organizations with which the organization collaborated and third parties that it engaged to assist with the CHNA;
4. A description of how the organization considered the input of persons representing the community (*e.g., through meetings, focus groups, interviews, etc.*), who those persons are, and their qualifications;
5. A prioritized description of all of the community needs identified by the CHNA and an explanation of the process and criteria used in prioritizing such needs; and
6. A description of the existing health care facilities and other resources within the community available to meet the needs identified through the CHNA.

Section 501(r) provides that a CHNA must take into account input from persons who represent the broad interests of the community served by the hospital facility, including individuals with special knowledge of or expertise in public health. Under the Notice, the persons consulted must also include: Government agencies with current information relevant to the health needs of the community and representatives or members in the community that are medically underserved, low-income, minority populations, and populations with chronic disease needs. In addition, a hospital organization may seek input from other individuals and organizations located in or serving the hospital facility's defined community (e.g., health care consumer advocates, academic experts, private businesses, health insurance and managed care organizations, etc.).

For health departments that are preparing to apply for accreditation, the Public Health Accreditation Board (PHAB) recommends working diligently on a Community Health Assessment and Community Health Improvement Plan. The Community Health Needs Assessment is not only a requirement for accreditation, but it is a vital part of the Public Health role.

JOB #1: Report PHAB / ACA Required CHNA Documentation

1. Appoint an Accreditation Coordinator
2. Review PHAB's Online Orientation to Public Health Department Accreditation
3. Review the documentation requirements for the measures
4. Begin/refine work on the prerequisites
 - a. **Community health assessment**
 - b. **Community health improvement plan**
 - c. Health department strategic plan
5. Prepare documentation

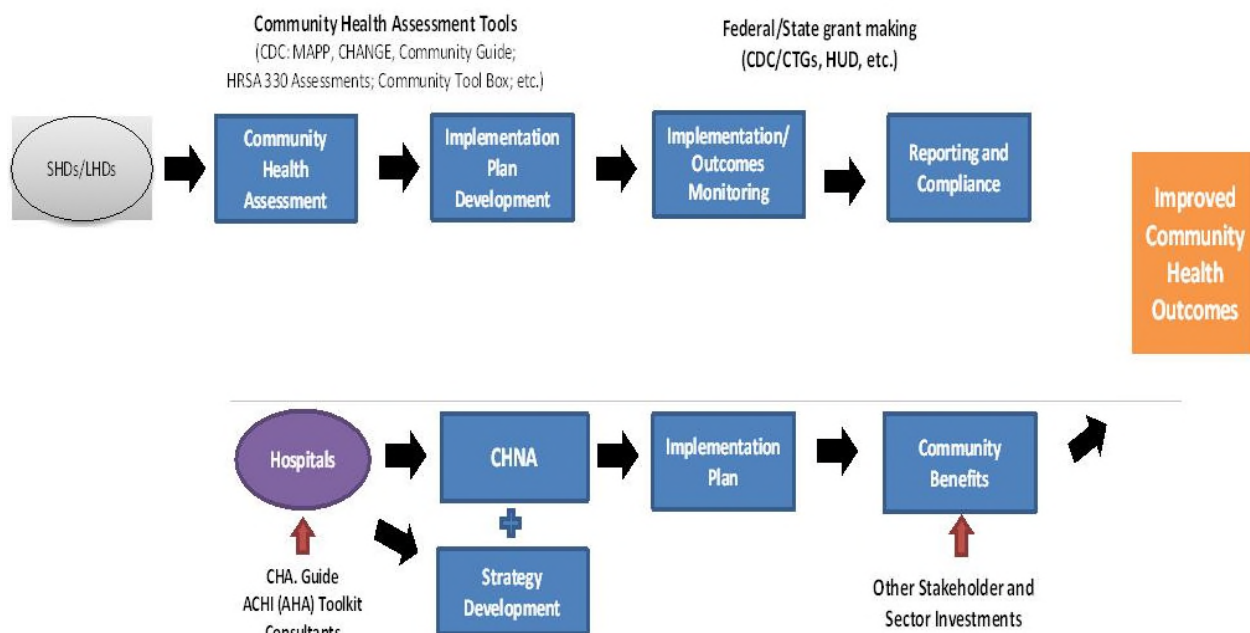
JOB #2: Making a CHNA Widely Available to the Public

The Notice provides that a CHNA will be considered to be “conducted” in the taxable year that the written report of the CHNA findings is made widely available to the public. The Notice also indicates that the IRS intends to pattern its rules for **making a CHNA “widely available to the public”** after the rules currently in effect for Form 990. Accordingly, an organization would make a **facility’s written report** widely available by posting the final report on its website either in the form of (1) the report itself, in a readily accessible format or (2) a link to another organization’s website, along with instructions for accessing the report on that website. *The Notice clarifies that an organization must post the CHNA for each facility until the date on which its subsequent CHNA for that facility is posted.*

JOB #3: Adopt an Implementation Strategy by Hospital

Section 501(r) requires a hospital organization to adopt an implementation strategy to meet the needs identified through each CHNA. The Notice defines an “implementation strategy” as a written plan that addresses each of the needs identified in a CHNA by either (1) describing how the facility plans to meet the health need or (2) identifying the health need as one that the facility does not intend to meet and explaining why the facility does not intend to meet it. A hospital organization may develop an implementation strategy in collaboration with other organizations, which must be identified in the implementation strategy. As with the CHNA, a hospital organization that operates multiple hospital facilities must have a separate written implementation strategy for each of its facilities.

Great emphasis has been given to work hand-in-hand with leaders from hospitals, the state health department and the local health department. A common approach has been adopted to create the CHNA, leading to aligned implementation plans and community reporting.



IRS Notice 2011-52 Overview

Notice and Request for Comments Regarding the Community Health Needs Assessment Requirements for Tax-exempt Hospitals:

Applicability of CHNA Requirements to “Hospital Organizations”

The CHNA requirements apply to “hospital organizations,” which are defined in Section 501(r) to include (1) organizations that operate one or more state-licensed hospital facilities, and (2) any other organization that the Treasury Secretary determines is providing hospital care as its principal function or basis for exemption.

How and When to Conduct a CHNA

Under Section 501(r), a hospital organization is required to conduct a CHNA for each of its hospital facilities once every three taxable years. ***The CHNA must take into account input from persons representing the community served by the hospital facility and must be made widely available to the public. The CHNA requirements are effective for taxable years beginning after March 23, 2012.*** As a result, a hospital organization with a June 30 fiscal year end must conduct an initial CHNA for each of its hospital facilities by June 30, 2013, either during the fiscal year ending June 30, 2015 or during either of the two previous fiscal years.

Determining the Community Served

A CHNA must identify and assess the health needs of the **community served** by the hospital facility. Although the Notice suggests that geographic location should be the primary basis for defining the community served, it provides that the organization may also take into account the target populations served by the facility (e.g., children, women, or the aged) and/or the facility’s principal functions (e.g., specialty area or targeted disease). *A hospital organization, however, will not be permitted to define the community served in a way that would effectively circumvent the CHNA requirements (e.g., by excluding medically underserved populations, low-income persons, minority groups, or those with chronic disease needs).*

Persons Representing the Community Served

Section 501(r) provides that a CHNA must take into account input from **persons who represent the broad interests of the community** served by the hospital facility, including individuals with special knowledge of or expertise in public health. Under the Notice, the persons consulted must also include: (1) government agencies with current information relevant to the health needs of the community and (2) representatives or members of medically underserved, low-income, and minority populations, and populations with chronic disease needs, in the community. In addition, a hospital organization may seek input from other individuals and organizations located in or serving the hospital facility’s defined community (e.g., health care consumer advocates, academic experts, private businesses, health insurance and managed care organizations, etc.).

Required Documentation

The Notice provides that a hospital organization will be required to separately document the CHNA for each of its hospital facilities in a **written report** that includes the following information: 1) a description of the community served by the facility and how the community was determined; 2) a description of the process and methods used to conduct the CHNA; 3) the identity of any and all organizations with which the organization collaborated and third parties that it engaged to assist with the CHNA; 4) a description of how the organization considered the input of persons representing the community (e.g., through meetings, focus groups, interviews, etc.), who those persons are, and their qualifications; 5) a prioritized description of all of the community needs identified by the CHNA and an explanation of the process and criteria used in prioritizing such needs; and 6) a description of the existing health care facilities and other resources within the community available to meet the needs identified through the CHNA.

Making a CHNA Widely Available to the Public

The Notice provides that a CHNA will be considered to be **“conducted”** in the taxable year that the written report of the CHNA findings is made **widely available to the public**. The Notice also indicates that the IRS intends to pattern its rules for making a CHNA “widely available to the public” after the rules currently in effect for Forms 990. *Accordingly, an organization would make a facility’s written report widely available by posting on its website either (1) the report itself, in a readily accessible format, or (2) a link to another organization’s website, along with instructions for accessing the report on that website. The Notice clarifies that an organization must post the CHNA for each facility until the date on which its subsequent CHNA for that facility is posted.*

How and When to Adopt an Implementation Strategy

Section 501(r) requires a hospital organization to adopt an implementation strategy to meet the needs identified through each CHNA. **The Notice defines an “implementation strategy” as a written plan that addresses each of the needs identified in a CHNA by either (1) describing how the facility plans to meet the health need, or (2) identifying the health need as one that the facility does not intend to meet and explaining why the facility does not intend to meet it.** A hospital organization may develop an implementation strategy in collaboration with other organizations, which must be identified in the implementation strategy. As with the CHNA, a hospital organization that operates multiple hospital facilities must have a separate written implementation strategy for each of its facilities.

Under the Notice, an implementation strategy is considered to be “adopted” on the date the strategy is approved by the organization’s board of directors or by a committee of the board or other parties legally authorized by the board to act on its behalf. Further, the formal adoption of the implementation strategy must occur by the end of the same taxable year in which the written report of the CHNA findings was made available to the public. For hospital organizations with a June 30 fiscal year end, that effectively means that the organization must complete and appropriately post its first CHNA no later than its fiscal year ending June 30, 2013, and formally adopt a related implementation strategy by the end of the same tax year. *This final requirement may come as a surprise to many charitable hospitals, considering Section 501(r) contains no deadline for the adoption of the implementation strategy.*

Year 2015 - IRS and Treasury Finalize Patient Protection Rules for Tax-Exempt Hospitals

ACCOUNTING TODAY 1/2/15

The Internal Revenue Service and the Treasury Department have issued **final regulations** under the Affordable Care Act to protect patients in tax-exempt hospitals from aggressive debt collection practices and to provide other rules for charitable hospitals.

Under the **final regulations**, each Section 501(c)(3) hospital organization is required to meet four general requirements on a facility-by-facility basis: establish written financial assistance and emergency medical care policies; limit the amounts charged for emergency or other medically necessary care to individuals eligible for assistance under the hospital's financial assistance policy; make reasonable efforts to determine whether an individual is eligible for assistance under the hospital's financial assistance policy before engaging in extraordinary collection actions against the individual; and conduct a community health needs assessment, or CHNA, and adopt an implementation strategy at least once every three years. The first three requirements are effective for tax years beginning after March 23, 2010 and the CHNA requirements are effective for tax years beginning after March 23, 2012.

The ACA also added a new Section 4959, which imposes an excise tax for failure to meet the CHNA requirements, and added reporting requirements. These final regulations provide guidance on the entities that must meet these requirements, the reporting obligations relating to these requirements and the consequences for failing to satisfy the requirements.

"Charitable hospitals represent more than half of the nation's hospitals and play a key role in improving the health of the communities they serve," wrote Emily McMahon, Deputy Assistant Secretary for Tax Policy at the U.S. Department of the Treasury, in a **blog post** Monday explaining the requirements. "But reports that some charitable hospitals have used aggressive debt collection practices, including allowing debt collectors to pursue collections in emergency rooms, have highlighted the need for clear rules to protect patients. For hospitals to be tax-exempt, they should be held to a higher standard. That is why the Affordable Care Act included additional consumer protection requirements for charitable hospitals, so that patients are protected from abusive collections practices and have access to information about financial assistance at all tax-exempt hospitals."

She noted that as a condition of their tax-exempt status, charitable hospitals must take an active role in improving the health of the communities they serve, establish billing and collections protections for patients eligible for financial assistance, and provide patients with the information they need to apply for such assistance. "These final rules adopt the same framework of proposed regulations but simplify the compliance process for charitable hospitals, while continuing to provide meaningful guidance on protections for patients and requirements to assess community health needs," she added.

Under the new rules, hospitals cannot charge individuals eligible for financial assistance more for emergency or other medically necessary care than the amounts generally billed to patients with insurance (including Medicare, Medicaid, or private commercial insurance). In addition, every tax-exempt hospital must establish and widely publicize a financial assistance policy that clearly describes to patients the eligibility criteria for obtaining financial assistance and the method for applying for financial assistance.

Charitable hospitals are also prohibited from engaging in certain collection methods (for example, reporting a debt to a credit agency or garnishing wages) until they make reasonable efforts to determine whether an individual is eligible for assistance under the hospital's financial assistance policy.

In addition, each charitable hospital needs to conduct and publish a community health needs assessment at least once every three years and disclose on the tax form that it files on an annual basis the steps it is taking to address the health needs identified in the assessment.

Many of the requirements have been in place since the Affordable Care Act passed in 2010, but in response to comments on the proposed regulations, the final rules also expand access to translations for patients, by lowering the threshold for having translations of financial assistance policies available from 10 percent of the community served as proposed, to five percent of the community served or population expected to be encountered by the hospital facility, or 1000 persons, whichever is less, according to McMahon. "The final rules also revise the notification requirements to maintain important protections for patients while making it easier for hospitals to comply with them," she wrote. "General notifications regarding a hospital's financial assistance policy must appear on bills and in the hospital. However, individual written and oral notifications of the hospital's financial assistance policy are now only required when a hospital plans to use extraordinary collections actions, such as reporting a debt to a credit bureau, selling the debt to a third party or garnishing wages."

While charitable hospitals must continue to make a good-faith effort to comply, the rules provide charitable hospitals with time to fully update their policies and programming to implement the changes. But if a charitable hospital fails to meet the consumer protection provisions required by the law, the hospital could have its tax-exempt status revoked. If a hospital fails to properly conduct a community health needs assessment or adopt an implementation strategy, an excise tax will apply, McMahon noted. "However, if a hospital fails to meet a requirement, but the failure is neither willful nor egregious, the hospital can correct and publicly disclose the error to have it excused, thus avoiding revocation of tax-exempt status, but the excise tax would still apply," she wrote.

Domain 1: Conduct and disseminate assessments focused on population health status and public health issues facing the community.

Domain 1 focuses on the assessment of the health of the population in the jurisdiction served by the health department. The domain includes: systematic monitoring of health status; collection, analysis, and dissemination of data; use of data to inform public health policies, processes, and interventions; and participation in a process for the development of a shared, comprehensive health assessment of the community.

DOMAIN 1 INCLUDES FOUR STANDARDS:

- **Standard 1.1** - Participate in or Conduct a Collaborative Process Resulting in a Comprehensive Community Health Assessment
- **Standard 1.2** - Collect and Maintain Reliable, Comparable, and Valid Data That Provide Information on Conditions of Public Health Importance and on the Health Status of the Population
- **Standard 1.3** - Analyze Public Health Data to Identify Trends in Health Problems, Environmental Public Health Hazards, and Social and Economic Factors That Affect the Public's Health
- **Standard 1.4** - Provide and Use the Results of Health Data Analysis to Develop Recommendations Regarding Public Health Policy, Processes, Programs, or Interventions

Seven Steps of Public Health Department Accreditation (PHAB):

1. Pre-Application
2. Application
3. Document Selection and Submission
4. Site Visit
5. Accreditation Decision
6. Reports
7. Reaccreditation

II. Methodology

b) Collaborating CHNA Parties

Working together to improve community health takes collaboration. Listed below is an in-depth profile of the local hospital and health department CHNA partners:

Mahaska Health Partnership Profile

1229 C Ave. E, Oskaloosa, IA 52577

Chief Executive Officer: Jay Christensen

Get to Know MHP: Mahaska Health Partnership in Oskaloosa, Iowa is a thriving medical campus providing services from birth to end-of-life, and everything in between – including emergency care, outpatient services, classes, support groups, and elective and preventive healthcare. But it's not what we do that sets us apart from other healthcare centers in Mahaska county; it's the core values that inform every aspect of how we deliver a personalized healthcare experience. No one wants cold, impersonal healthcare – least of all us.

Our mission is to bring the humanity of compassionate care together with the latest technology and most informed science, treating all with honesty, respect, and confidentiality. We treat your family like they're our family, from the receptionist's desk all the way to the recovery room. It's these values that make us the best rural healthcare team in Iowa.

Nowhere is our family-centric approach more evident than in our new Birthing Center. Our goal is to make the birth of your baby an experience you can enjoy, cherish, and share with dad, siblings and extended family in our spacious private suites. The birth of a baby is a miracle, and we are honored every time we share this joyous experience with our patients.

Just as the beginning of life is filled with love and family, we believe that the end of life should be supported with equal care - which is how we operate the Mahaska Health Partnership Hospice Serenity House. When hospice care can no longer take place at home, we offer our home staffed with nurses trained to meet the unique needs of hospice patients and their loved ones.

Life is a journey. It has its challenges, its soaring highs, and deepest valleys. We want to care for you and family through every turn. From the birth of your baby, to your surgery; emergency to elective healthcare services and all the sore throats, bumps and bruises along the way; the MHP family is here to care for you.

Welcome: At Mahaska Health Partnership, we've made a commitment to Make Healthcare Personal for our patients, visitors and staff. As an organization, we have defined who we are and adopted many quality standards to help ensure we are meeting our commitment at every opportunity.

Our mission is to provide exceptional customer service and health improvement, linking the science of medicine with the humanity of compassionate care. We fulfill our mission through our core values of accountability, taking responsibility for quality healthcare and resource management; collaboration, working together to achieve our shared goals; excellence in exceeding expectations; innovation by enhancing services through creativity and technology; and integrity, treating all with honesty, respect and confidentiality. These values help us realize

our vision to be the best rural healthcare team in Iowa. Our vision enables us to deliver on our promise to you: At Mahaska Health Partnership, we treat you and yours like family. From your first experience with a receptionist to your surgery and recovery; our family is with you every step of the way to ensure you receive the same high quality care and compassion we would expect for our own family and neighbors.

MHP is a thriving medical campus with a history dating back more than 100 years. We provide services from birth to end-of-life for emergency, elective and preventive healthcare. While we are proud of the strides we have made as an organization and the expanding number of healthcare services we are able to provide close to home, our focus is always on the future. We are continually evolving our quality standards, available providers and our services to ensure we are meeting the healthcare needs of you and your family, today and for generations to come.

Outpatient Services: Improve your life. Get well. Stay well. Feel your absolute best. That's what our full complement of outpatient services at Mahaska Health Partnership is all about. Whether you're coming in to finally get that good night's sleep, help your child speak more easily, treat pain with massage, get that mammogram or visit our Level III Trauma Center, we are here to offer not only solutions, but support. Here is our full list of outpatient services.

- Behavioral Health Services
- Cancer Care & Infusion Center
- Cardiopulmonary Services
- Diabetes Education
- Emergency Services
- Flight Physicals
- Home Health & Hospice Services
- Laboratory Services
- Massage Therapy
- Medical Group
- Medical Nutrition Therapy
- New Sharon Medical Center
- Occupational Health Services
- Physical & Occupational Therapy
- Public Health Services
- Radiology Services
- Sleep Services
- Speech Therapy Services
- Surgical Services
- Walk-In

Inpatient Services: When we planned the details of our new Inpatient Services unit, we asked ourselves: What would help patients feel better? How can we best support their recovery, and their concerns? What kind of care would we want our mother, our grandfather, or our brother to have? The answers to these questions can be found in everything we do to ensure your ongoing safety and comfort.

For all of our patients staying with us: We use state-of-the-art technologies; We have hourly nursing rounds; We have a daily quiet time to ensure your rest and relaxation; We have staff specially trained to not only offer care, but support and compassion; We have some of the best doctors, nurses, and volunteers in Oskaloosa!

- Birthing Center
- Geriatric Psychiatry Services
- Hospice – Serenity House
- Surgical Services

Mahaska Health Partnership Public Health Profile

1225 C Avenue East, Oskaloosa, IA 52577

Public Health is located in Mahaska Health West on the MHP campus, entrance #6

Public Health / Home Health Hospice Director: Travis Johnson

The mission of MHP Public Health Services is to promote, preserve and protect the health and environmental well-being of all Mahaska County Residents.

Public Health Services: Mahaska Health Partnership has partnered with Mahaska County to provide necessary public health services for the community. Everyone from birth to end-of-life is eligible to utilize the services offered by Public Health. These services are provided based on need and eligibility, and will be set up on a sliding fee scale based on each individual or family income. Through the services we provide, our goal is to promote the health and well-being of our community.

Our Mission: We at Mahaska Health Partnership are committed to exceptional customer service and health improvement, linking the science of medicine with [the humanity of compassionate care.

Mahaska Health Partnership is committed to making healthcare personal by providing high quality services. We do this by offering an array of healthcare options, including Public Health services.

Available vaccines and tests:

- Haemophilus Influenzae B (HIB)
- Hepatitis A and Hepatitis B
- Human Papillomavirus (HPV)
- Influenza (when available)
- Lice check
- Measles, Mumps and Rubella (MMR)
- Meningococcal
- Pneumococcal
- Polio
- Rotavirus
- Tetanus / Diphtheria (Td)
- Tetanus / Diphtheria / Pertussis (Tdap)
- Tuberculosis (TB) skin testing
- Varicella (chicken pox)

Our services include:

- Adult immunizations
- Bio-emergency preparation
- Blood pressure screenings
- Child immunizations, including vaccines for underinsured, uninsured and Medicaid patients through the VFC program
- Lead screening and education
- Maternal and Child Health services
- Perfect Beginnings Program (home visit by
- a registered nurse to new mom and baby)
- Skilled nursing in-home visits, home care
- aide visits and homemaking services

Other resources:

- Hawk-i education
- I-Smiles dental program
- Infant massage
- Men's and Women's Healthcare Clinic
- WIC (Women, Infants & Children), a supplemental nutrition program

Available Services:

- **Public Health Emergency Preparation** – Provides education on being prepared in the event of many different types of disaster. In the event of an actual natural or man-made disaster, we will provide education, resources and services as needed, to assist you and your loved ones.
- **Immunizations** – Partnered with the Iowa Department of Public Health and the Vaccine for Children program, immunizations are provided to children in low income and uninsured or under insured families. Certain vaccines for adults are also provided at a cost, please contact the office if specific vaccines are requested.
- **Vaccines for Children Immunization Clinic** – is available to eligible children age 18 and younger. The clinic is held on the MHP campus the first Friday of every month from 9:00 to 11:30 am and 1:00 to 3:30 pm
- **Maternal Health program** – Offered to pregnant women to provide education and resources to assist you in having a healthy pregnancy. Referrals from a physician, WIC clinic, Birthing Center staff or Lamaze instructor as well as self referrals are accepted. You may meet or talk with a nurse regarding eligibility. The nurse will assist you, based on your eligibility, in applying for public assistance, community resources and enrollment in the Maternal Health program.
- **Meals on Wheels** – A lunch hour meal can be delivered to your home seven days a week, excluding major holidays. Diet specific meals such as low salt, diabetic or low cholesterol are available. Meals can be delivered to Oskaloosa residents and may be delivered to Beacon and University Park for a slightly higher fee.
- **Men's and Women's Health Clinic** – Provides annual health screenings exams, birth control, STD & HIV testing along with pregnancy prevention and education regarding sexually transmitted diseases. Sliding fee scale and programs are available based on each individual's financial need.
- **Perfect Beginnings and Lactation Consultation** – Through a partnership with the MHP Birthing Center and funding from the Iowa Department of Public Health and Mahaska County grants, all moms delivering at MHP will receive a visit from a nurse during your hospital stay. Upon your request, the nurse will assist you further.
- **WIC (Women, Infant and Children)** – Is a federal program aimed at providing education and nutrition to pregnant women, their infant and children. Any family who meets income guidelines will receive vouchers for specific foods to promote healthy eating choices along with free counseling with a dietitian, lead screenings and immunizations. In addition to these benefits, eligible participants in the WIC program also receive free dental screenings with a dental hygienist and assistance with finding a dental provider as needed.

II. Methodology

b) Collaborating CHNA Parties Continued

Consultant Qualifications



VVV Consultants LLC

Company Profile: 601 N. Mahaffie, Olathe, KS 66061 (913) 302-7264

VINCE VANDEHAAR, MBA

Principal Consultant and Owner of VVV Consultants LLC

VVV Consultants LLC was incorporated on May 28, 2009. With over 30 years of business and faculty experience in helping providers, payors and financial service firms obtain their strategic planning and research and development needs, Vince brings in-depth health industry knowledge, research aptitude, planning expertise and energy. VVV Consultants LLC services are organized, formal processes of listening to the voice of the customer. Vince started his consulting business after working for Saint Luke's Health System (SLHS) of Kansas City for 16 years. *(Note: Saint Luke's Hospital of Kansas City, SLHS's largest hospital, won the Malcolm Baldrige National Quality Award in March of 2003. The Baldrige examiners cited Vince's department as "Best Practice" in the areas of customer satisfaction, market research and evaluation efforts <Kansas City Star 3/10/04>).*

VVV Consultants LLC consultants have in-depth experience helping hospitals work with local health departments to engage community residents and leaders to identify gaps between existing health community resources and needs and construct detailed strategies to meet those needs, while still adhering to the hospital's mission and budget. Over the past 20 years, Vandehaar has completed eight comprehensive Baldrige aligned Community Health Needs Assessments for Saint Luke's of Kansas City System facilities (three campuses) and was contracted to conduct two additional independent department of health consulting projects (prior to IRS 990 regs). To date, VVV has completed 75 CHNA IRS-aligned assessments for Iowa, Kansas, Missouri and Nebraska hospitals and health departments.

Vince Vandehaar, MBA is actively involved in the Kansas City community. He is a member the Greater Kansas City Employee Benefits Association, the Society for Healthcare Strategy and Market Development, the American Marketing Association Kansas City Chapter and Co-Chair of the AMA Kansas City Healthcare Special Interest Group. In addition to these roles, from 2000 to 2008, Vince served as the state chairman for MHA's Data Committee and was a member of KHA's Data Taskforce.

Collaborating Consultants

Alexa Backman, MBA - VVV Consultants LLC

Associate Consultant

Alexa provides project management support for all aspects of VVV Consultants LLC's healthcare consulting services, from project start to finish. She is client focused with a special interest in quality patient healthcare delivery to meet customer needs. Alexa graduated from the University of Kansas with a Bachelor's Degree in Community Health Education in 2013. In 2015, Alexa graduated from Rockhurst University's Helzberg School of Management with an MBA in Healthcare Management.

II. Methodology

c) CHNA and Town Hall Research Process

Mahaska Health Partnership's Community Health Needs Assessment (CHNA) process began in July 2016. At that time, an inquiry was made by Jay Christensen, CEO to VVV Consultants LLC to explore the possibility of conducting a comprehensive IRS and PHAB-aligned CHNA. VVV Consultants LLC then reviewed their CHNA experience, in-depth CHNA requirements and regulations, CHNA development options to meet IRS and PHAB requirements and next steps after option approval.

VVV CHNA Deliverables:

- Confirm MHP's Primary Service Area meets the 80-20 Patient Origin Rule.
- Uncover / document basic secondary research and health of the county organized by 10 tabs.
- Conduct a Town Hall meeting to discuss secondary data and uncover / prioritize county health needs.
- Conduct and report CHNA primary research (with valid N).
- Prepare and publish CHNA report that meets IRS and PHAB requirements.

To ensure proper MHP Town Hall representation that meets the 80-20 Patient Origin Rule, a patient origin three-year summary was generated and documented the zip codes below as MHP's Primary Service Area.

Mahaska Health Partnership - PSA Detail Demographic Profile									
			Population			Households		HH	Per Capita
Zip	Name	County	YR 2014	YR 2019	Chg.	YR 2014	YR 2019	Avg. Size	Income 14
50027	Barnes City	MAHASKA	275	269	-2.2%	132	130	2.1	\$30,591
50143	Leighton	MAHASKA	570	552	-3.2%	226	220	2.5	\$25,164
50207	New Sharon	MAHASKA	2,589	2,616	1.0%	1,029	1,042	2.5	\$24,728
52534	Beacon	MAHASKA	548	588	7.3%	239	258	2.2	\$29,966
52543	Cedar	MAHASKA	277	277	0.0%	99	99	2.8	\$23,623
52561	Fremont	MAHASKA	941	917	-2.6%	381	372	2.5	\$21,159
52577	Oskaloosa	MAHASKA	15,350	15,334	-0.1%	6,219	6,217	2.4	\$22,098
52586	Rose Hill	MAHASKA	511	506	-1.0%	216	214	2.4	\$28,389
Totals			21,061	21,059	-0.6%	8,541	8,552	2.4	\$25,715

Mahaska Health Partnership - CHNA Work Plan

Project Timeline and Roles 2017

Step	Date	Lead	Task
1	10/23/2016	VVV	Sent VVV quote for review.
2	10/25/2016	Hosp	Select CHNA Option C. Approve / sign VVV CHNA quote.
3	10/26/2016	VVV	Send out REQCommInvite Excel file. Hospital client to fill in PSA key stakeholder names, addresses and e-mail addresses.
4	10/26/2016	VVV	Request hospital client to send IHA Patient Origin reports for Mahaska County, IA to document service area for FFY 13, 14, 15 and 16 (if available). In addition, request hospital client to complete three year historical PSA IP / OP /ER / Clinic Patient Origin file (use ZipPSA_3yrPOrigin.xls).
5	On or before 10/31/2016	VVV	Prepare CHNA stakeholder feedback online link. Send text link for hospital client to review.
6	On or before 10/31/2016	VVV / Hosp	Prepare and send out PR story to local media announcing upcoming CHNA work / online survey for hospital client to place. Request public to participate.
7	11/7/2016	VVV	Launch online survey to stakeholders. Hospital client will e-mail invite to participate to all stakeholders.
8	On or before 12/31/2016	VVV	Assemble and complete secondary research. Find and populate 10 TABS. Create Town Hall PowerPoint for presentation.
9	1/3/2017	Hosp	Prepare and send out community Town Hall invite letter and place local advertisement.
10	1/3/2017	VVV / Hosp	Prepare and send out PR story to local media announcing upcoming Town Hall. VVV will mock up PR release to media sources.
11	On or before 1/13/2017	All	Conduct conference call with hospital client to review Town Hall data and flow.
12	1/18/2017	VVV	Conduct CHNA Town Hall from 5:30-7pm at the Musco Technology Center on the William Penn Campus. Review and discuss basic health data and rank health needs.
13	On or before 2/6/2017	VVV	Complete analysis. Release draft one and seek feedback from leaders at hospital client.
14	On or before 2/24/2017	VVV	Produce and release final CHNA report. Hospital client will post CHNA online.
15	2/24/2017	Hosp	Conduct hospital client Implementation Plan PSA leadership meeting.
16	30 days prior to end of hospital fiscal year	Hosp	Hold board meetings to discuss CHNA needs, create and adopt an Implementation Plan. Communicate CHNA plan to community.

To meet the IRS and PHAB CHNA requirements, a four-phase methodology was reviewed and approved as follows:

Phase I—Discovery:

Conduct a 30-minute conference call with the CHNA hospital client. Review / confirm CHNA calendar of events, explain / coach clients to complete required participant database and schedule / organize all Phase II activities.

Phase II—Qualify Community Need:

A) Conduct secondary research to uncover the following historical community health status for the primary service area. Use Iowa Hospital Association (IHA), Vital Statistics, Robert Wood Johnson County Health Rankings, etc. to document current state of county health organized as follows:

TAB 1. Demographic Profile
TAB 2. Economic/Business Profile
TAB 3. Educational Profile
TAB 4. Maternal and Infant Health Profile
TAB 5. Hospitalization / Providers Profile
TAB 6. Behavioral Health Profile
TAB 7. Risk Indicators & Factors
TAB 8. Uninsured Profile
TAB 9. Mortality Profile
TAB 10. Preventative Quality Measures

B) Gather historical primary research to uncover public health needs, practices and perceptions for hospital client's primary service areas.

Phase III—Quantify Community Need:

Conduct a 90-minute Town Hall meeting with required county primary service area residents. At each Town Hall meeting, CHNA secondary data will be reviewed, facilitated group discussion will occur and a group ranking activity to determine the most important community health needs will be administered.

Phase IV—Complete Data Analysis and Create Comprehensive Community Health Needs Assessment:

Post CHNA report findings to meet IRS and PHAB CHNA criteria.

After consideration from the sponsoring hospital client, the CHNA Option C was selected with the following project schedule:

Phase I: Discovery.....	November 2016
Phase II: Secondary / Primary Research.....	December 2016
Phase III: Town Hall Meeting.....	January 18, 2017
Phase IV: Prepare / Release CHNA report.....	February 2017

Detail CHNA Development Steps Include:

Steps to Conduct Community Health Needs Assessment	
	Development Steps
Step #1 Commitment	<i>Determine interest level of area healthcare leaders (Health Department, Hospital, Mental Health Centers, Schools, Churches and Physicians, etc.) and hold community meeting.</i>
Step #2 Planning	<i>Prepare brief Community Health Needs Assessment plan. List goals, objectives, purpose, outcome, roles, community involvement, etc. Hold community kick-off meeting.</i>
Step #3 Secondary Research	<i>Collect and report community health published facts. Gather health practice data from published secondary research sources (i.e. census, county health records, behavioral risk factors surveillance, etc.).</i>
Step #4a Primary Research	<i>Conduct Community Roundtable (qualitative research). Review secondary research (Step #3) with community stakeholders. Gather current opinions and identify health needs.</i>
Step #4b Primary Research <Optional>	<i>Collect community opinions (quantitative research). Gather current opinions (valid sample size) regarding community health needs and healthcare practices. If appropriate, conduct Physician Manpower Assessment to determine FTE physician need by specialty.</i>
Steps #5 Reporting	<i>Prepare / present comprehensive Community Health Needs Assessment report to community leaders with recommended actions to improve health. (Note: Formal report will follow PHAB regulations).</i>
<div>VVV Consultants LLC</div> <div>(913) 302-7264</div>	

Overview of Town Hall Community Priority Setting Process

Each community has a wealth of expertise to be tapped for CHNA development. For this reason, a Town Hall is the perfect forum to gather community insight and provide an atmosphere to objectively consensus build and prioritize county health issues.

All Town Hall priority-setting and scoring processes involve the input of key stakeholders in attendance. Individuals and organizations attending the Town Halls were critically important to the success of the CHNA. The following list outlines partners invited to the Town Hall: local hospital, public health community, mental health community, free clinics, community-based clinics, service providers, local residents, community leaders, opinion leaders, school leaders, business leaders, local government, faith-based organizations and persons (or organizations serving them), people with chronic conditions, uninsured community members, low income residents and minority groups.

Mahaska Health Partnership's Town Hall was held on Wednesday, January 18, 2017 at the Musco Technology Center on the William Penn Campus. Vince Vandehaar and Alexa Backman facilitated this 1½ hour session with 47 attendees. (Note: a detailed roster of all Town Hall attendees is listed in Section V.)

The following Town Hall agenda was conducted:

1. Welcome and introductions.
2. Review purpose for the CHNA Town Hall and roles in the process.
3. Presentation / review of historical county health indicators (10 Tabs).
4. Facilitate Town Hall participant discussion of data by probing health strengths / concerns. Reflect on size and seriousness of any health concerns cited and discuss current community health strengths.
5. Engage Town Hall participants to rank health needs using four dots to cast votes on priority issues. Tally and rank top community health concerns cited.
6. Close meeting by reflecting on the health needs / community voting results. Inform participants on next steps.

At the end of the Town Hall session, VVV encouraged all community members to continue to contribute ideas to hospital leaders via e-mail or personal conversations.

(NOTE: To review detail Town Hall discussion content, please turn to Section V for detailed notes of session and activity card content reporting of open-end comments.)

Community Health Needs Assessment Town Hall Meeting

Mahaska Health Partnership – Primary Service Area



Vince Vandehaar, MBA
VVV Consultants LLC
Principal / Adjunct Professor

Olathe, Kansas 66061
VVV@VandehaarMarketing.com
913-302-7264

Community Health Needs Assessment (CHNA) Town Hall Discussion Agenda

- I. Opening / Introductions (10 mins)
- II. Review CHNA Purpose and Process (10 mins)
- III. Review Current County “Health Status”
 - Secondary Data by 10 TAB Categories
 - Review Community Feedback Research (35 mins)
- IV. Collect Community Health Perspectives
 - Hold Community Voting Activity
 - Determine Most Important Health Areas (30 mins)
- V. Close / Next Steps (5 mins)

I. Introduction:

Background and Experience



Vince Vandehaar, MBA
VVV Consultants LLC - Principal Consultant
Olathe, KS 913 302-7264

- Professional Consulting Services: Strategic Planning, Marketing Management, Business Research & Development
 - Focus : Strategy , Research , Deployment
 - 25+ years of experience with Tillinghast, BCBSKC, Saint Luke's
- Adjunct Professor - Marketing / Health Admin, 28 years +**
- Webster University (1988 – present)
 - Rockhurst University (2010 – present)

Alexa Backman, MBA, Associate Consultant

Town Hall Participation (You)

- ALL attendees welcome to share
 - Parking Lot
- There are no right or wrong answers
- Only one person speaks at a time
- Please give truthful responses
- Have a little fun along the way

I. Introductions: A Conversation with the Community

Community members and organizations invited to CHNA Town Hall

Consumers: Uninsured/underinsured people, Members of at-risk populations, Parents, caregivers and other consumers of health care in the community, and Consumer advocates.

Community leaders and groups: The hospital organization's board members, Local clergy and congregational leaders, Presidents or chairs of civic or service clubs -- Chamber of Commerce, veterans' organizations, Lions, Rotary, etc., Representatives from businesses -- owners/CEO's of large businesses (local or large corporations with local branches.), Business people & merchants (e.g., who sell tobacco, alcohol, or other drugs), Representatives from organized labor, Political, appointed and elected officials, Foundations, United Way organizations. And other "community leaders."

Public and other organizations: Public health officials, Directors or staff of health and human service organizations, City/Community planners and development officials, Individuals with business and economic development experience, Welfare and social service agency staff, Housing advocates - administrators of housing programs: homeless shelters, low-income-family housing and senior housing, Education officials and staff - school superintendents, principals and teachers, Public safety officials, Staff from state and area agencies on aging, Law enforcement agencies - Chiefs of police, Local colleges and universities, Coalitions working on health or other issues.

Other providers: Physicians, Leaders in other not-for-profit health care organizations, such as hospitals, clinics, nursing homes and home-based and community-based services, Leaders from Catholic Charities and other faith-based service providers, Mental health providers, Oral health providers, Health insurers, Parish and congregational nursing programs, Other health professionals

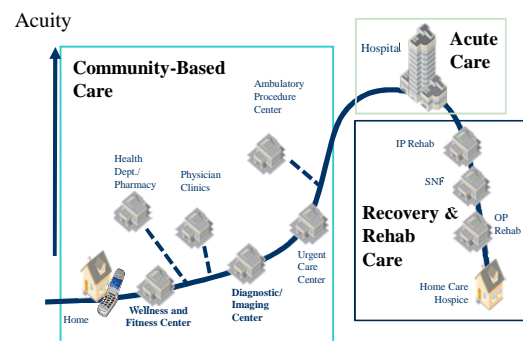
II. Purpose—Why Conduct a CHNA?

- To determine health-related trends and issues of the community
- To understand / evaluate health delivery programs in place.
- To develop strategies to address unmet health needs
- To meet Federal requirements – both local hospital and health department

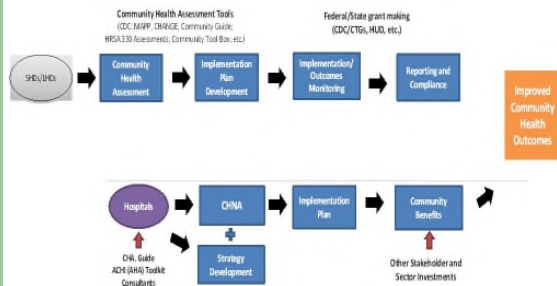
II. Review CHNA Definition

- A Community Health Needs Assessment (CHNA) is a systematic collection, assembly, analysis, and dissemination of information about the health of the community. (NOTE: Some the data has already been collected / published by Local, State and Federal public health organizations. Some data will be collected today.)
- A CHNA's role is to identify factors that affect the health of a population and determine the availability of resources to adequately address those factors.

Future System of Care—Sg2



Community Health Needs Assessment Joint Process: Hospital and Local Health Department



The Seven Steps of Public Health Department Accreditation (PHAB)

1. Pre-application,
2. Application,
3. Document Selection and Submission,
4. Site Visit
5. Accreditation Decision,
6. Reports,
7. Reaccreditation

II. CHNA Written Report Documentation

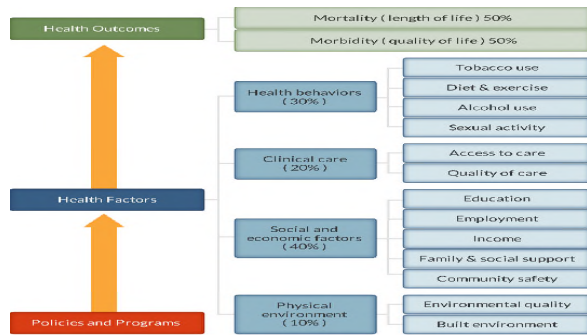
- a description of the community served
- a description of the CHNA process
- the identity of any and all organizations and third parties which collaborated to assist with the CHNA
- a description of how the organization considered the input of persons representing the community (e.g., through meetings, focus groups, interviews, etc.), who those persons are, and their qualifications
- a prioritized description of all of the community needs identified by the CHNA and
- a description of the existing health care facilities and other resources within the community available to meet the needs identified through the CHNA

III. Review Current County Health Status: Secondary Data by 10 Tab Categories, plus IA State Rankings

TAB 1. Demographic Profile
TAB 2. Economic/Business Profile
TAB 3. Educational Profile
TAB 4. Maternal and Infant Health Profile
TAB 5. Hospitalization / Providers Profile
TAB 6. Behavioral Health Profile
TAB 7. Risk Indicators & Factors
TAB 8. Uninsured Profile
TAB 9. Mortality Profile
TAB 10. Preventative Quality Measures

County Health Rankings -

Robert Wood Johnson Foundation and University of WI Health Institute



1a Physical Environment (10%)			2b Social and Economic Environment (40%)		
Focus Area	Measure	Description	Focus Area	Measure	Description
Air and water quality (5%)	Air pollution - particulate matter	The average daily measure of fine particulate matter in micrograms per cubic meter (PM2.5) in a county	Community safety (5%)	Violent crime	Violent crime rate per 100,000 population
	Drinking water violations	Percent of population potentially exposed to water exceeding a violation limit during the past year		Injury deaths	Injury mortality per 100,000
	Housing and transit (5%)	Seven housing problem index	Percent of households with at least 1 of 4 housing problems: overcrowding, high housing costs, or lack of kitchen or plumbing facilities	Health Behaviors (30%)	
Clinical Care (20%)	Driving alone to work	Percent of the workforce that drives alone to work			
	Long commute - driving alone	Among workers who commute in their car alone, the percent that commute more than 30 minutes			
	Access to care (10%)	Uninsured	Percent of population under age 65 without health insurance		
Quality of care (10%)	Primary care physicians	Ratio of population to primary care physicians	Tobacco use (10%)	Adult smoking	Percent of adults that report smoking >= 100
	Dentists	Ratio of population to dentists		Food environment index	Index of factors that contribute to a healthy food environment
	Mental health providers	Ratio of population to mental health providers		Physical inactivity	Percent of adults aged 20 and over reporting
Social and Economic Environment (40%)	Preventable hospital days	Hospitalization rate for ambulatory-care sensitive conditions per 1,000 Medicare enrollees	Alcohol and drug use (5%)	Access to exercise opportunities	Percent of the population with adequate access to locations for physical activity
	Diabetic screening	Percent of diabetic Medicare enrollees that receive HbA1c screening		Excessive drinking	Percent of adults aged 20 and over reporting
	Mammography screening	Percent of female Medicare enrollees that receive mammography screening		Alcohol-impaired driving deaths	Percent of driving deaths with alcohol impairment
Education (10%)	High school graduation	Percent of ninth-grade cohort that graduates in 4 years	Sexually transmitted infections (5%)	Sexually transmitted infections	Chlamydia rate per 100,000 population
	Some college	Percent of adults aged 25-44 years with some post-secondary education		Twin births	Twin birth rate per 1,000 female population, ages 15-49
	Unemployment (10%)	Percent of population age 16+ unemployed but seeking work			
Income (10%)	Children in poverty	Percent of children under age 18 in poverty	Quality of life (10%)	Poor or fair health (age-adjusted)	Percent of adults reporting fair or poor health (age-adjusted)
	Family and social support (5%)	Percent of adults without social/emotional support		Poor physical health days	Average number of physically unhealthy days reported in past 30 days (age-adjusted)
	Children in single-parent households	Percent of children that live in household headed by single parent		Poor mental health days	Average number of mentally unhealthy days reported in past 30 days (age-adjusted)
Length of life (10%)	Premature death	Years of potential life lost before age 75 per 100,000 population (age-adjusted)	Low birthweight	Low birthweight	Percent of live births with low birthweight (< 2,500 grams)

IV. Collect Community Health Perspectives Ask your opinion. Your thoughts?

- 1) **Tomorrow:** What is occurring or might occur *that would affect the "health of our community?"*
- 2) **Today:** What are the *strengths* of our community that contribute to health?
- 3) **Today:** Are there healthcare services in your community / neighborhood that you feel *need to be improved and / or changed?*

Have We Forgotten Anything?

- | | |
|--------------------------------|------------------------------------|
| A. Aging Services | M. Hospice |
| B. Chronic Pain Management | N. Hospital Services |
| C. Dental Care/Oral Health | O. Maternal, Infant & Child Health |
| D. Developmental Disabilities | P. Nutrition |
| E. Domestic Violence, | R. Pharmacy Services |
| F. Early Detection & Screening | S. Primary Health Care |
| G. Environmental Health | T. Public Health |
| H. Exercise | U. School Health |
| I. Family Planning | V. Social Services |
| J. Food Safety | W. Specialty Medical Care Clinics |
| K. Health Care Coverage | X. Substance Abuse |
| L. Home Health | Y. Transportation |
| | Z. Other _____ |

Community Health Needs Assessment



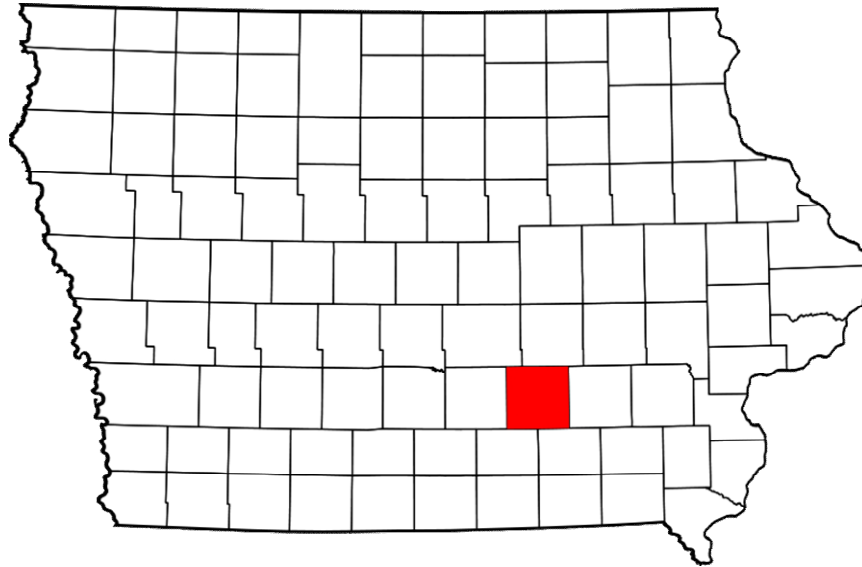
Questions; Next Steps?

VVV Consultants LLC
vmlvandehaar@aol.com
(913) 302-7264

II. Methodology

d) Community Profile (A Description of Community Served)

Mahaska County, Iowa Community Profile



Demographics

The population of Mahaska County was estimated to be 22,324 on July 1, 2015, and had a -0.3% change in population from April 1, 2010–July 1, 2015.¹ According to the United States Census Bureau, its county seat is Oskaloosa. Mahaska County comprises the Oskaloosa, IA Micropolitan Statistical Area. The county has a total area of 573 square miles, of which 571 square miles is land and 2.1 square miles is water.² Mahaska County's population density is 39 persons per square mile and its industries providing employment are Agriculture (forestry, fishing and hunting, and mining) (32.8%), Educational (health and social services) (25.8%) and Manufacturing (10.9%).³

The major highway transportation is by U.S. Highway 63, Iowa Highway 23, Iowa Highway 92, Iowa Highway 163, Iowa Highway 146 and Iowa Highway 149.⁴

¹ <http://www.census.gov/quickfacts/table/PST045215/19123>

² U.S. Census Bureaus

³ http://www.city-data.com/county/Mahaska_County-IA.html

⁴ U.S. Census Bureaus

Mahaska Health Partnership - PSA

Detail Demographic Profile

			Population			Households		HH	Per Capita
Zip	Name	County	YR 2014	YR 2019	Chg.	YR 2014	YR 2019	Avg. Size	Income 14
50027	Barnes City	MAHASKA	275	269	-2.2%	132	130	2.1	\$30,591
50143	Leighton	MAHASKA	570	552	-3.2%	226	220	2.5	\$25,164
50207	New Sharon	MAHASKA	2,589	2,616	1.0%	1,029	1,042	2.5	\$24,728
52534	Beacon	MAHASKA	548	588	7.3%	239	258	2.2	\$29,966
52543	Cedar	MAHASKA	277	277	0.0%	99	99	2.8	\$23,623
52561	Fremont	MAHASKA	941	917	-2.6%	381	372	2.5	\$21,159
52577	Oskaloosa	MAHASKA	15,350	15,334	-0.1%	6,219	6,217	2.4	\$22,098
52586	Rose Hill	MAHASKA	511	506	-1.0%	216	214	2.4	\$28,389
Totals			21,061	21,059	-0.6%	8,541	8,552	2.4	\$25,715

			Population				YR 2014		Females
Zip	Name	County	YR 2014	Pop. 65+	Kids <18	Gen. Y	Males	Females	Age 20_35
50027	Barnes City	MAHASKA	275	46	65	75	148	127	20
50143	Leighton	MAHASKA	570	98	144	147	302	268	37
50207	New Sharon	MAHASKA	2,589	407	743	696	1,327	1,262	183
52534	Beacon	MAHASKA	548	121	116	141	274	274	35
52543	Cedar	MAHASKA	277	45	66	72	146	131	19
52561	Fremont	MAHASKA	941	144	253	282	486	455	75
52577	Oskaloosa	MAHASKA	15,350	2,608	4,013	4,810	7,664	7,686	1,545
52586	Rose Hill	MAHASKA	511	82	120	136	270	241	36
Totals			21,061	3,551	5,520	6,359	10,617	10,444	1,950

			Population				Aver	HH	
Zip	Name	County	White	Black	Amer. Ind.	Hisp.	HH Inc. 14	YR 2014	HH \$50K+
50027	Barnes City	MAHASKA	268	0	1	5	\$63,693	132	83
50143	Leighton	MAHASKA	558	1	0	5	\$63,084	226	138
50207	New Sharon	MAHASKA	2,553	0	10	25	\$62,217	1,029	625
52534	Beacon	MAHASKA	540	3	2	12	\$67,896	239	145
52543	Cedar	MAHASKA	272	1	1	3	\$66,097	99	59
52561	Fremont	MAHASKA	927	2	0	5	\$52,259	381	180
52577	Oskaloosa	MAHASKA	14,450	229	63	379	\$53,773	6,219	2,831
52586	Rose Hill	MAHASKA	499	3	2	6	\$67,162	216	136
Totals			20,067	239	79	440	\$62,023	8,541	4,197

Source: ERSA Demographics

III. Community Health Status

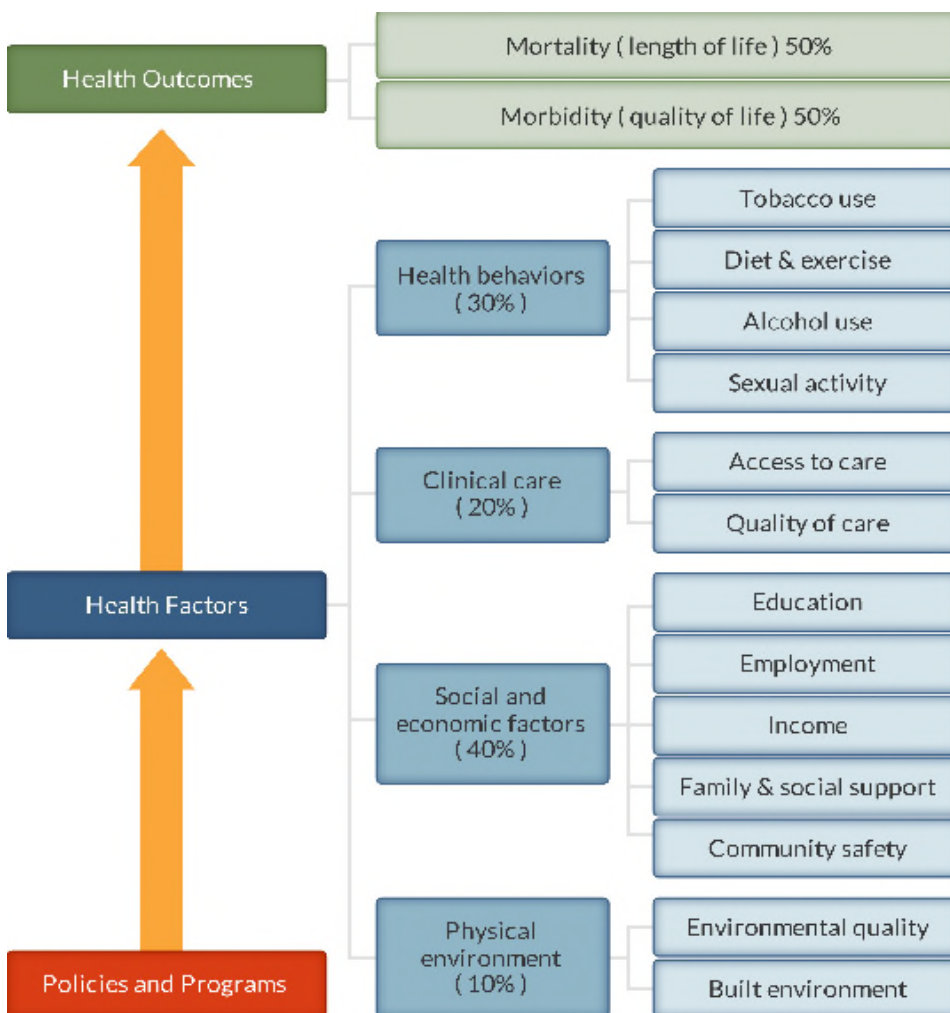
[VVV Consultants LLC]

III. Community Health Status

a) Historical Health Statistics

Health Status Profile

This section of the CHNA reviews published quantitative community health indicators and results of our recent CHNA Town Hall. To produce this profile, VVV Consultants LLC staff analyzed data from multiple sources. This analysis focuses on a set of published health indicators organized by 10 areas of focus (10 Tabs), results from the 2015 County Health Rankings and conversations from Town Hall primary research. **Each table reflects a trend column, with Green denoting growing / high performance indicators, Yellow denoting minimal change / average performance indicators and Red denoting declining / low performance indicators.** (Note: The Robert Wood Johnson Foundation collaborates with the University of Wisconsin Population Health Institute to release annual *County Health Rankings*. As seen below in model, these rankings are based on a number of health factors.)



Secondary Research

2016 State Health Rankings for Mahaska County, Iowa

#	Iowa Rank of 99 Counties	Definitions	Mahaska County	Trend	IA Rural Norm (16)
1	Health Outcomes	Length of Life, Quality of Life	38		59
1a	Length of Life	Premature Death	36		58
1b	Quality of Life	Poor / Fair Health, Poor Physical / Mental Health Days, Low Birthweight	47		54
2	Health Factors	Health Behaviors, Clinical Care, Social / Economic Factors, Physical Environment	65		56
2a	Health Behaviors	Tobacco Use, Diet / Exercise, Alcohol / Drug Use, Sexual Activity	83		53
2b	Clinical Care	Access to Care, Quality of Care	46		62
2c	Social and Economic Factors	Education, Employment, Income, Family / Social Support, Community Safety	63		54
2d	Physical Environment	Air / Water Quality, Housing / Transit	25		34
http://www.countyhealthrankings.org , released 2016					
Iowa Rural Norm (N=16) includes the following counties: Mahaska, Page, Fremont, Ida, Sac, Davis, Appanoose, Marion, Poweshiek, Tama, Madison, Ringgold, Carroll, Lucas, Clayton and Monona.					

When considering the state of community health, it's important to review published health data by topic area. Below is a summary of key tabs of information collected:

Tab 1a Demographic Profile

Tab	Health Indicator	Mahaska County	Trend	State of IA	IA Rural Norm (16)	Source
1a a	Population estimates, July 1, 2015	22,324		3,123,899	14,307	People Quick Facts
1a b	Population, Census, April 1, 2010	22,381		3,046,869	14,546	People Quick Facts
1a c	Population, percent change - April 1, 2010 (estimates base) to July 1, 2015	-0.3%		2.5%	-2.1%	People Quick Facts
1a d	Persons under 5 years, percent, July 1, 2015	6.2%		6.3%	5.9%	People Quick Facts
1a e	Persons under 18 years, percent, July 1, 2015	23.8%		23.3%	23.1%	People Quick Facts
1a f	Persons 65 years and over, percent, July 1, 2015	17.2%		16.1%	20.5%	People Quick Facts
1a g	Female persons, percent, July 1, 2015	49.6%		50.3%	50.2%	People Quick Facts
1a h	White alone, percent, July 1, 2015	95.8%		91.8%	96.4%	People Quick Facts
1a i	Black or African American alone, percent, July 1, 2015	1.4%		3.5%	0.8%	People Quick Facts
1a j	Hispanic or Latino, percent, July 1, 2015	2.1%		5.7%	2.5%	People Quick Facts
1a k	American Indian and Alaska Native alone, percent, July 1, 2015	0.4%		0.5%	0.9%	People Quick Facts
1a l	Asian alone, percent, July 1, 2015	1.2%		2.4%	0.6%	People Quick Facts
1a m	Two or More Races, percent, July 1, 2015	1.1%		1.8%	1.2%	People Quick Facts

Tab 1b Demographic Profile

Tab	Health Indicator	Mahaska County	Trend	State of IA	IA Rural Norm (16)	Source
1b a	Foreign born persons, percent, 2011-2015	2.0%		3.9%	1.7%	People Quick Facts
1b b	Language other than English spoken at home, percent of persons age 5 years+, 2011-2015	2.4%		6.1%	4.6%	People Quick Facts
1b c	Population per square mile, 2010	39.2		87.1	25.6	Geography Quick Facts
1b d	% Rural	52.0%		29.6%	72.0%	Census Population Estimates
1b e	Persons in poverty, percent	14.4%		14.8%	12.1%	People Quick Facts
1b f	Children in poverty, percent, 2014	16.0%		21.0%	18.1%	Small Area Income and Poverty Estimates
1b g	Veterans, 2011-2015	1,394		466,762	1,039	People Quick Facts
1b h	State of Iowa Voter Registration Totals, January 2017	15,214		2,203,663	10,307	Iowa Secretary of State

Tab 2a Economic / Business Profile

Tab	Health Indicator	Mahaska County	Trend	State of IA	IA Rural Norm (16)	Source
2a	a Median household income (in 2015 dollars), 2011-2015	\$48,726		\$53,183	\$48,978	People Quick Facts
2a	b Per capita income in past 12 months (in 2015 dollars), 2011-2015	\$25,228		\$27,950	\$26,031	People Quick Facts
2a	c Housing units, July 1, 2015	9,802		1,369,359	6,687	People Quick Facts
2a	d Owner-occupied housing unit rate, 2011-2015	70.3		71.5	75.4	People Quick Facts
2a	e Median value of owner-occupied housing units, 2011-2015	\$106,200		\$129,200	\$101,056	People Quick Facts
2a	f Households, 2011-2015	9,023		1,236,409	5,855	People Quick Facts
2a	g Persons per household, 2011-2015	2.4		2.4	2.4	People Quick Facts
2a	h Severe housing problems, percent, 2008-2012	12.0%		12.0%	10.7%	Comprehensive Housing Affordability Strategy (CHAS) data
2a	i Living in same house 1 year ago, percent of persons age 1 year+, 2011-2015	84.9%		84.8%	87.8%	People Quick Facts

Tab 2b Economic / Business Profile

Tab	Health Indicator	Mahaska County	Trend	State of IA	IA Rural Norm (16)	Source
2b	a Grocery stores/1,000 pop, 2012	0.1		NA	0.3	U.S. Department of Agriculture - Food Environment Atlas
2b	b Low income and low access to store, percent, 2010	7.8%		NA	5.4%	U.S. Department of Agriculture - Food Environment Atlas
2b	c Seniors, low access to store, percent, 2010	4.2%		NA	2.9%	U.S. Department of Agriculture - Food Environment Atlas
2b	d SNAP participants (% pop), 2014	13.1%		13.1%	13.1%	U.S. Department of Agriculture - Food Environment Atlas
2b	e All firms, 2012	1,839		259,121	1,364	Business Quick Facts
2b	f Unemployment, percent, 2014	4.6%		4.4%	4.6%	Bureau of Labor Statistics

Tab 3 Educational Profile

Currently, school districts are providing on-site primary health screenings and basic care.

Tab	Health Indicator	Mahaska County	Trend	State of IA	IA Rural Norm (16)	Source
3	a Children eligible for free lunch, percent, 2012-2013	27.0%		34.0%	32.8%	National Center for Education Statistics
3	b High school graduate or higher, percent of persons age 25 years+, 2011-2015	91.5%		91.5%	91.0%	People Quick Facts
3	c Bachelor's degree or higher, percent of persons age 25 years+, 2011-2015	22.7%		26.7%	19.5%	People Quick Facts

Tab 3 Educational Profile

#	Health Indicators	Oskaloosa Community School District	North Mahaska Community School District	Eddyville-Blakesburg	Oskaloosa Christian Schools
1	Total Public School Nurses	4	1	1	0
2	School Nurse Part of IEP Team	Yes	Yes	Yes	No
3	Active School Wellness Plan	Yes	Yes	Yes	Yes
4	VISION: # Screened / Referred to Prof / Seen by Professional	NA	286 / 0 / 0	*60 / 1 / 0	Dr. Else / PC Eye
5	HEARING: # Screened / Referred to Prof / Seen by Professional	AEA - Sara T.	AEA - Sara T.	AEA	AEA - Deb R.
6	ORAL HEALTH: # Screened / Referred to Prof / Seen by Professional	299 / 41 / NA	101 / 6 / NA	*60 / 3 / 0	NA
7	SCOLIOSIS: # Screened / Referred to Prof / Seen by Professional	No	No	No	No
8	Students Served with No Identified Chronic Health Concerns	**1,177	533	**784	NA
9	School has Suicide Prevention Program	Yes	No	No	No
10	Compliance on Required Vaccinations	76%	96%	NA	88%

*Eddyville-Blakesburg and Fremont Schools are combined (Eddyville and Blakesburg are in Wapello County. Fremont Elementary is in Mahaska County, except kindergarten class now goes to Eddyville Elementary). Data given on vision is from Eddyville Elementary only (making this data Mahaska and Wapello students mixed).

**Students with health alerts in the school system for asthma, diabetes or any type of allergy.

TAB 4 Maternal / Infant Health Profile

Tracking maternal and infant care patterns are vital in understanding the foundation of family health.

Tab	Health Indicator	Mahaska County	Trend	State of IA	IA Rural Norm (16)	Source
4 a	Mothers Who Began Prenatal Care in First Trimester (Rate per 1,000), 2012-2013	478.0		765	272.4	2015 State Health Profile - Center for Public Health Statistics
4 b	Mother Smoked During Pregnancy (Rate per 1,000), 2012-2013	120.0		153	61.6	2015 State Health Profile - Center for Public Health Statistics
4 c	Percent of live births that are preterm (< 37 weeks of gestation), 2006-2012	9.0%		NA	11.3%	NVSS
4 d	Low Birth Weight, percent, 2006-2012	5.7%		6.8%	6.5%	NVSS
4 e	Live Birth Rate for Mothers Under Age 20 (Rate per 1,000 Live Births), 2015	29.1		41	46.3	Vital Statistics of Iowa
4 f	Out-of-Wedlock Live Birth Rate (Rate per 1,000 Live Births), 2015	323.6		352	331.6	Vital Statistics of Iowa
4 g	WIC Participation, percent, 2014	3.1%		3.1%	3.0%	2015 State Health Profile - Center for Public Health Statistics

TAB 4 Maternal / Infant Health Profile

Tab		Vital Statistics of Iowa	Mahaska County	Trend	State of IA
4	a	Total Live Births, 2011	281		38,204
4	b	Total Live Births, 2012	267		38,686
4	c	Total Live Births, 2013	273		39,013
4	d	Total Live Births, 2014	290		39,685
4	e	Total Live Births, 2015	309		39,467

TAB 5 Hospitalization / Providers Profile

Understanding provider access and disease patterns are fundamental in healthcare delivery. Listed below are several vital county statistics.

Tab		Health Indicator	Mahaska County	Trend	State of IA	IA Rural Norm (16)	Source
5	a	Ratio of Primary Care physicians to population, 2013	1,320:1		1,350:1	1,993:1	Area Health Resource File/American Medical Association
5	a	Ratio of Dentists to population, 2014	2,490:1		1,630:1	3,244:1	Area Health Resource File/National Provider Identification file
5	b	Preventable hospital stays per 1,000, 2013	60.0		51.0	59.6	Dartmouth Atlas of Health Care
5	c	Patients who gave their hospital a rating of 9 or 10 on a scale from 0 (lowest) to 10 (highest), 4/1/15-3/31/16	81.0%		77.0%	77.1%	CMS Hospital Compare
5	d	Patients who reported YES, they would definitely recommend the hospital, 4/1/15-3/31/16	78.0%		75.0%	73.2%	CMS Hospital Compare
5	e	Average Time Patients Spent in the Emergency Department Before They Were Seen by a Healthcare Professional, minutes, 4/1/15-3/31/16	NA		22.0	18.0	CMS Hospital Compare

#	IHA PO103	Mahaska County, IA			Trend
		FFY14	FFY15	FFY16	
1	Total	2,318	2,329	2,290	
2	Discharges <18	309	327	351	
3	Discharges 18-44	472	472	491	
4	Discharges 45-64	485	536	467	
5	Discharges 65-74	348	290	387	
6	Discharges 75+	704	704	594	
7	%	100.0%	100.0%	100.0%	
#	IHA PO103	MHP Only			Trend
		FFY14	FFY15	FFY16	
1	Total	1,217	1,262	1,168	
2	Discharges <18	135	134	165	
3	Discharges 18-44	216	216	224	
4	Discharges 45-64	194	262	165	
5	Discharges 65-74	185	161	181	
6	Discharges 75+	487	489	433	
7	%	53.0%	54.2%	51.0%	

TAB 6 Behavioral Health Profile

Behavioral healthcare provides another important indicator of community health status.

Tab	Health Indicator	Mahaska County	Trend	State of IA	IA Rural Norm (16)	Source
6 a	Children in single-parent households, percent, 2010-2014	27.0%		29.0%	25.7%	American Community Survey, 5-year estimates
6 b	Poor mental health days, 2014	3.1		3.1	3.0	Behavioral Risk Factor Surveillance System
6 c	Beneficiaries with Depression, percent, 2014	15.4%		15.7%	15.2%	CMS
6 d	Beneficiaries with Alzheimer's Disease, Related Disorders, or Senile Dementia, percent, 2013	9.4%		9.3%	9.3%	CMS
6 e	Ratio of Mental Health providers to population, 2015	860:1		830:1	2,819:1	CMS, National Provider Identification
6 f	Violent crime rate per 100,000, 2010-2012	241.0		263.0	151.6	Uniform Crime Reporting - FBI
6 g	Alcohol-impaired driving deaths, 2010-2014	16.0%		24.0%	22.9%	Fatality Analysis Reporting System

TAB 7a Risk Indicators / Factors Profile

Knowing community health risk factors and disease patterns can aid in the understanding of next steps to improve health. Being overweight / obese, smoking, drinking in excess, not exercising, etc. can lead to poor health.

Tab	Health Indicator	Mahaska County	Trend	State of IA	IA Rural Norm (16)	Source
7a a	Adult smoking, percent, 2014	19.0%		19.0%	17.1%	Behavioral Risk Factor Surveillance System
7a b	Physical inactivity, percent, 2012	26.0%		25.0%	28.1%	CDC Diabetes Interactive Atlas
7a c	Poor physical health days, 2014	3.0		3.2	3.0	Behavioral Risk Factor Surveillance System
7a d	Adult obesity, percent, 2012	31.0%		31.0%	32.1%	CDC Diabetes Interactive Atlas
7a e	Diabetes prevalence, percent, 2012	9.0%		9.0%	10.2%	CDC Diabetes Interactive Atlas
7a f	Excessive drinking, percent, 2014	20.0%		22.0%	18.8%	Behavioral Risk Factor Surveillance System
7a g	Sexually transmitted infections per 100,000, 2013	303.0		356.3	193.1	National Center for HIV/AIDS, Viral Hepatitis, STD, and TB Prevention
7a h	Mean travel time to work, workers age 16 years+, minutes, 2011-2015	18.7		18.9	19.9	People Quick Facts
7a i	Long commute - driving alone, percent, 2010-2014	17.0%		19.0%	25.1%	American Community Survey
7a j	Communiting to Work - Workers 16 and over who walked, 2011-2015	4.1%		3.5%	4.3%	American Community Survey 5-Year Estimates
7a k	Food Insecurity, percent, 2013	13.0%		13.0%	12.6%	Map the Meal Gap
7a l	Air pollution - particulate matter, average daily density in micrograms per cubic meter, 2011	10.2		10.9	10.1	CDC WONDER environmental data
7a m	Drinking water violations, FY2013-FY2014	No		Yes	No	Safe Drinking Water Information System

TAB 7b Risk Indicators / Factors Profile

Tab	Health Indicator	Mahaska County	Trend	State of IA	IA Rural Norm (16)	Source
7b a	Beneficiaries with Asthma, percent, 2013	2.8%		3.5%	2.7%	CMS
7b b	Beneficiaries with Arthritis, percent, 2013	25.8%		25.7%	27.4%	CMS
7b d	Beneficiaries with Chronic obstructive pulmonary disease (COPD), percent, 2013	8.1%		10.4%	10.9%	CMS
7b e	Beneficiaries with High Cholesterol, percent, 2014	31.2%		39.5%	41.2%	CMS
7b f	Beneficiaries with Diabetes, percent, 2014	22.4%		23.7%	24.8%	CMS
7b g	Beneficiaries with High Blood Pressure, percent, 2014	43.8%		50.7%	53.3%	CMS
7b h	Beneficiaries with Ischemic Heart Disease, percent, 2014	23.5%		24.1%	25.6%	CMS
7b i	Beneficiaries with Hypertension, percent, 2013	46.9%		51.2%	53.1%	CMS
7b j	Beneficiaries with Stroke, percent, 2013	2.3%		2.6%	2.5%	CMS
7b k	Beneficiaries with Atrial fibrillation, percent, 2013	7.8%		8.7%	8.9%	CMS
7b l	Beneficiaries with Chronic kidney disease, percent, 2013	10.9%		13.7%	13.7%	CMS

TAB 8 Uninsured Profile

Based on state estimations, the number of insured is documented below. Also, the amount of charity care from area providers is trended below.

Tab	Health Indicator	Mahaska County	Trend	State of IA	IA Rural Norm (16)	Source
8 a	Uninsured, percent, 2013	9.0%		10.0%	10.7%	Small Area Health Insurance Estimates

Source Hospital Internal Records						
	Mahaska Health Partnership	YR 2013	YR 2014	YR 2015	YR 2016	Trend
1	Bad Debt	\$2,445,607	\$2,418,591	\$2,908,631	\$1,332,767	
2	Charity Care	\$588,970	\$525,241	\$275,558	\$173,598	

TAB 9 Mortality Profile

The leading causes of county deaths are listed below. Areas of higher than expected are so noted.

Tab	Health Indicator	Mahaska County	Trend	State of IA	IA Rural Norm (16)	Source
9 a	Female life expectancy at birth (years), 2013	81.9		81.6	81.5	Institute for Health Metrics and Evaluation
9 b	Male life expectancy at birth (years), 2013	76.2		77.0	76.4	Institute for Health Metrics and Evaluation
9 c	Premature death, Years of Potential Life Lost Rate, 2011-2013	5,700.0		5,900.0	6,700.0	National Center for Health Statistics - Mortality Files
9 d	Major Cardiovascular Disease death rate, 2015	255.3		274.0	392.4	Vital Statistics of Iowa
9 e	Chronic Lower Respiratory Disease death rate, 2015	53.8		63.1	80.5	Vital Statistics of Iowa
9 f	Unintentional Injuries death rate, 2015	94.1		46.3	71.5	Vital Statistics of Iowa
9 g	Suicide death rate per 100,000, 2014	9.5		12.9	12.8	CDC

#	Causes of Death by County of Residence, Vital Statistics of Iowa, 2015	Mahaska County	%	Trend	State of IA	%
	All Causes	402	100.0%		61,212	100.0%
1	Major Cardiovascular Diseases	57	14.2%	0.2%	8,561	14.0%
2	Malignant neoplasms, including neoplasms of lymphatic and hematopoietic tissues	50	12.4%	2.1%	6,305	10.3%
3	Diseases of Heart	41	10.2%	-0.5%	6,559	10.7%
4	Ischemic Heart Disease	33	8.2%	1.2%	4,268	7.0%
5	All Other Diseases	33	8.2%	0.3%	4856	7.9%
6	Other Forms of Chronic Ischemic Heart Disease	28	7.0%	2.1%	2,997	4.9%
7	All Other Forms of Chronic Ischemic Heart Disease	24	6.0%	2.5%	2,120	3.5%
8	Unintentional Injuries	21	5.2%	2.9%	1445	2.4%
9	Malignant Neoplasms of Respiratory and Intrathoracic Organ	14	3.5%	0.6%	1,789	2.9%
10	Cerebrovascular Diseases	14	3.5%	1.3%	1355	2.2%

TAB 10 Preventive Quality Measures Profile

The following table reflects the future health of the county. This information also is an indicator of community awareness of preventative measures.

Tab	Health Indicator	Mahaska County	Trend	State of IA	IA Rural Norm (16)	Source
10 a	Access to exercise opportunities, percent, 2014	66.0%		76.0%	57.6%	Business Analyst, Delorme map data, ESRI, & US Census Tigerline Files
10 b	Limited access to healthy foods, percent, 2010	5.0%		6.0%	5.9%	USDA Food Environment Atlas
10 c	Diabetic monitoring, percent, 2013	86.0%		90.0%	88.4%	Dartmouth Atlas of Health Care
10 d	Mammography screening, percent, 2013	71.0%		67.0%	63.7%	Dartmouth Atlas of Health Care
10 e	Insufficient sleep, percent, 2014	28.0%		30.0%	27.6%	Behavioral Risk Factor Surveillance System
10 f	Frequent physical distress, percent, 2014	9.0%		10.0%	9.1%	Behavioral Risk Factor Surveillance System
10 g	Percent Annual Check-Up Visit with PCP			NA	NA	TBD
10 h	Percent Annual Check-Up Visit with Dentist			NA	NA	TBD
10 i	Percent Annual Check-Up Visit with Eye Doctor			NA	NA	TBD

Community Feedback Research

For a CHNA, it's also important to gather community perspective from key stakeholders on their views of progress to address the baseline CHNA needs documented three years ago. Below are findings of this online community primary research:

Question 1—Overall Quality of Healthcare Delivery

Mahaska Health Parntership (PSA) - Oskaloosa, IA N=247						
1. How do you rate the "Overall Quality" of healthcare delivery in our community?						
Answer Options	Very Good	Good	Fair	Poor	Very Poor	Valid N
Mahaska Health Partnership PSA N=247	42	118	64	16	7	247
Top 2 Boxes (Very Good / Good)	64.8%		25.9%	6.5%	2.8%	
Option C Stakeholders	1,222	2,733	1,158	183	38	5,334
Top 2 Boxes (Very Good / Good)	74.1%		21.7%	3.4%	0.7%	

Question 8—Requested Discussion Items for Town Hall Agenda

Mahaska Health Parntership (PSA) - Oskaloosa, IA N=247			
8. Are there any other health needs from the list below that need to be discussed at our upcoming CHNA Town Hall meeting?	Option C Stakeholders Bottom 2 Boxes	MHP PSA N=247	Trend
Abuse / Violence	4.8%	4.5%	
Alcohol	4.7%	3.5%	
Cancer	4.6%	2.9%	
Diabetes	4.8%	3.8%	
Drugs / Substance Abuse	8.8%	9.4%	
Family Planning	2.9%	3.5%	
Heart Disease	3.6%	2.6%	
Lead Exposure	0.7%	0.7%	
Mental Illness	9.2%	13.2%	
Nutrition	4.9%	4.5%	
Obesity	7.9%	8.1%	
Ozone	5.1%	2.2%	
Physical Exercise	5.4%	4.6%	
Poverty	2.7%	6.5%	
Respiratory Disease	2.2%	0.8%	
Sexual Transmitted Infections	4.9%	6.0%	
Suicide	3.8%	4.8%	
Teen Pregnancy	4.0%	3.7%	
Tobacco Use	3.7%	3.8%	
Vaccinations	3.0%	1.7%	
Water Quality	5.8%	5.1%	
Wellness	1.8%	4.1%	
Other (please specify)	0.9%	2.5%	
TOTAL	100.0%	100.0%	

Questions 5-6—Rating of Healthcare Services

Mahaska Health Parntership (PSA) - Oskaloosa, IA N=247			
5. How would Mahaska Health Partnership Primary Service Area residents rate each of the following services?	Option C Stakeholders Bottom 2 Boxes	MHP PSA N=247	Trend
Ambulance Services	4.8%	2.6%	
Child Care	16.4%	15.3%	
Chiropractors	3.9%	5.5%	
Dentists	6.8%	8.7%	
Emergency Room	13.0%	21.6%	
Non-Emergent Same Day Care	15.6%	15.6%	
Urgent Care	20.3%	20.3%	
Eye Doctor / Optometrist	8.7%	6.3%	
Family Planning Services	9.3%	27.4%	
Home Health	5.0%	10.6%	
Hospice	2.5%	2.6%	
Inpatient Services	5.9%	8.1%	
Mental Health Services	6.0%	36.7%	
Nursing Home	15.0%	17.5%	
Outpatient Services	4.4%	8.5%	
Pharmacy	5.8%	5.8%	
Primary Care	11.4%	11.4%	
Public Health Department	31.1%	12.2%	
School Nurse	9.3%	11.5%	
Specialists	5.6%	14.3%	

Question 7—Healthcare Services Outside of PSA

Mahaska Health Parntership (PSA) - Oskaloosa, IA N=247			
7. Throughout the past two years, did you or someone you know receive healthcare services outside of the Mahaska Health Partnership Primary Service Area?	Option C Stakeholders Bottom 2 Boxes	MHP PSA N=247	Trend
Yes	78.5%	82.3%	
No	14.9%	14.3%	
Don't know	6.5%	3.4%	
TOTALS	100.0%	100.0%	

IV. Inventory of Community Health Resources

[VVV Consultants LLC]

Inventory of Healthcare Services offered in MHP PSA

Cat	Healthcare Services Access - Y/N	Hospital	Health Dept.	Other
Clinic	Primary Care	x		x
Hosp	Alzheimer Center			x
Hosp	Ambulatory Surgery Centers			
Hosp	Arthritis Treatment Center	x		
Hosp	Bariatric / Weight Control Services	x		
Hosp	Birthing / LDR / LDRP Room	x		
Hosp	Breast Cancer Services	x		
Hosp	Burn Care	x		
Hosp	Cardiac Rehabilitation	x		
Hosp	Cardiac Surgery			
Hosp	Cardiology Services	x		
Hosp	Case Management	x		x
Hosp	Chaplaincy / Pastoral Care	x		
Hosp	Chemotherapy	x		
Hosp	Colonoscopy	x		
Hosp	Crisis Prevention			x
Hosp	CT Scanner	x		
Hosp	Diagnostic Radioisotope Facility	x		
Hosp	Diagnostic / Invasive Catheterization			
Hosp	Electron Beam Computed Tomography (EBCT)			
Hosp	Enrollment Assistance	x	x	x
Hosp	Extracorporeal Shock Wave Lithotripter (ESWL)			
Hosp	Fertility Clinic			
Hosp	Full Field Digital Mammography (FFDM)	x		x
Hosp	Genetic Testing / Counseling			
Hosp	Geriatric Services	x	x	x
Hosp	Heart Services	x		
Hosp	Hemodialysis			x
Hosp	HIV / AIDS Services			
Hosp	Image-Guided Radiation Therapy (IGRT)			
Hosp	Inpatient Acute Care Services	x		
Hosp	Intensity-Modulated Radiation Therapy (IMRT) 161			
Hosp	Intensive Care Unit	x		
Hosp	Intermediate Care Unit	x		
Hosp	Interventional Cardiac Catheterization			
Hosp	Isolation Room	x		
Hosp	Kidney Services	x		x
Hosp	Liver Services	x		
Hosp	Lung Services	x		
Hosp	Magnetic Resonance Imaging (MRI)	x		
Hosp	Mammograms	x		x
Hosp	Mobile Health Services	x		
Hosp	Multi-slice Spiral Computed Tomography (<64 Slice CT)			
Hosp	Multi-slice Spiral Computed Tomography (64+ Slice CT)	x		
Hosp	Neonatal Services			
Hosp	Neurological services	x		
Hosp	Obstetrics Services	x		
Hosp	Occupational Health Services	x		

Inventory of Healthcare Services offered in MHP PSA

Cat	Healthcare Services Access - Y/N	Hospital	Health Dept.	Other
Hosp	Oncology Services	x		
Hosp	Orthopedic Services	x		
Hosp	Outpatient Surgery	x		
Hosp	Pain Management	x		
Hosp	Palliative Care Program	x		x
Hosp	Pediatric Services	x		x
Hosp	Physical Rehabilitation	x		
Hosp	Positron Emission Tomography (PET)			
Hosp	Positron Emission Tomography / CT (PET / CT)	x		
Hosp	Psychiatric Services			x
Hosp	Radiology, Diagnostic	x		
Hosp	Radiology, Therapeutic	x		
Hosp	Reproductive Health			
Hosp	Robotic Surgery			
Hosp	Shaped Beam Radiation System 161			
Hosp	Single Photon Emission Computerized Tomography			
Hosp	Sleep Center	x		
Hosp	Social Work	x	x	x
Hosp	Sports Medicine	x		
Hosp	Stereotactic Radiosurgery	x		
Hosp	Swing Bed Services	x		
Hosp	Transplant Services			
Hosp	Trauma Center -Level IV			
Hosp	Ultrasound	x		x
Hosp	Women's Health Services	x		x
Hosp	Wound Care	x		
SR	Adult Day Care Program			x
SR	Assisted Living			x
SR	Home Health	x		x
SR	Hospice			x
SR	Long-term Care			x
SR	Nursing Home			x
SR	Retirement Housing			x
SR	Skilled Nursing Care	x		x
ER	Emergency Services	x		
ER	Urgent Care Center			
ER	Ambulance Services	x		x
SERV	Alcoholism-Drug Abuse Services			x
SERV	Blood Donor Center	x		
SERV	Chiropractic Services			x
SERV	Complementary Medicine Services	x	x	x
SERV	Dental Services			x
SERV	Fitness Center	x		x
SERV	Health Education Classes	x		x
SERV	Health Fair	x		x
SERV	Health Information Center	x	x	x
SERV	Health Screenings	x	x	x

Inventory of Healthcare Services offered in MHP PSA

Cat	Healthcare Services Access - Y/N	Hospital	Health Dept.	Other
SERV	Meals on Wheels			X
SERV	Nutrition Program	X	X	X
SERV	Patient Education Center	X	X	X
SERV	Support Groups	X		X
SERV	Teen Outreach Services			X
SERV	Tobacco Treatment / Cessation Program	X		X
SERV	Transportation to Health Facilities	X		X
SERV	Wellness Program	X		X

Counts of Providers Delivering Care

Mahaska Health Partnership (Primary Service Area)

	FTE Physicians		FTE Allied Staff
FTE Providers Working in PSA	FTE MD / DO	Visiting DR*	FTE NP / PA
Primary Care:			
Family Practice	9.0		9.0
Internal Medicine / Geriatrics	3.0		1.0
Obstetrics / Gynecology	4.0		
Pediatrics	1.0		
Medicine Specialists:			
Allergy / Immunology	1.0		1.0
Cardiology	2.0	3.0	
Dermatology			
Endocrinology			
Gastroenterology			
Oncology / Radiology	1.0	1.0	
Infectious Disease			
Nephrology	2.0	2.0	
Neurology	1.0	1.0	
Psychiatry	4.0		2.0
Pulmonary	2.0	1.0	1.0
Rheumatology			
Surgery Specialists:			
General Surgery / Colon / Oral	2.0		
Neurosurgery			
Ophthalmology	1.0	1.0	
Orthopedics	1.0		1.0
Otolaryngology	1.0	1.0	
Plastic / Reconstructive Surgery			
Thoracic / Cardiovascular / Vascular Surgery	1.0	1.0	
Urology	1.0	1.0	
Hospital Based:			
Anesthesia / Pain Management			3.0
Emergency Medicine	5.0		
Radiology	1.0		
Pathology	1.0		
Hospitalist	2.0		2.0
Neonatology / Perinatology			
Physical Medicine / Rehabilitation			
Occupational Medicine			
Audiology		1.0	
Podiatry			1.0
Chiropractic			
Optometry			
Dental			
TOTALS	46.0	13.0	21.0

*FTE Specialists serving the community who office outside the PSA

Visiting Specialists to Mahaska Health Partnership

Specialty	Physician Name	Office Location	Schedule	Days per Month
Audiologist	Dawn	5950 University Ave, West Des Moines, IA 50266	4th Thursday	1
Cardiology	Dr. Bear	1215 Pleasant St # 414, Des Moines, IA 50309	2nd & 4th Tuesday	2
Cardiology	Dr. Lemon	1215 Pleasant Street, Suite 618, Des Moines, IA 50309	2nd & 4th Monday	2
Cardiology	Dr. McCormick	5880 University Ave #204, West Des Moines, IA 50266	1st & 3rd Tuesday	2
Ears/Nose/Throat	Dr. Losh	1212 Pleasant Street, Suite 410, Des Moines, IA 50309	4th Thursday	1
EMG (Nerve Testing)	Dr. Hurd	809 46th St, West Des Moines, IA 50265	Wednesdays	1
Nephrology	Dr. Buchsbaum	501 SW 7th St A, Des Moines, IA 50309	2nd Friday	1
Nephrology	Dr. R. Smith	1215 Pleasant St # 304, Des Moines, IA 50309	4th Friday	1
Oncology	Dr. Hiat	1221 Pleasant St # 100, Des Moines, IA 50309	Thursdays	4
Ophthalmology	Dr. Scallon	2020 Philadelphia St, Ames, IA 50010	Thursdays	1-2
Sleep Medicine	Dr. McCubbin	1108 Washington St, Pella, IA 50219	1st & 3rd Friday	2
Urology	Dr. A. Smith	122 4th Ave, Grinnell, IA 50112	2nd & 4th Monday	2
Vascular	Dr. Scott	5950 University Ave #231, West Des Moines, IA 50266	1st Thursday	1

Mahaska County Resource Directory



United Way
of Mahaska County

Mahaska County Offices

County Office	Location	Phone
Animal Control	2290 235 th St	641.673.3991
Assessor	106 S 1 st St	641.673.5805
Attorney	106 S 1 st St	641.673.9819
Auditor	106 S 1 st St	641.673.7148
Bicycle License (Oskaloosa)	214 High Ave E	641.673.2557
Board of Supervisors	106 S 1 st St	641.673.3469
Country Life Healthcare INC	2554 Ford Ave	641.673.4447
Central Point of Coordination	106 S 1 st St	641.672.2625
Conservation Board	2254 200 th St (New Sharon)	641.673.9327
Courts		
Clerk of Court	106 S 1 st St	641.673.7786
Adult Probation	109 N 3 rd St	641.673.7038
Jury Information	106 S 1 st St	641.673.7786
Juvenile Probation	106 S 1 st St	641.673.0419
Development/Housing	220 S Market St	641.673.8361
Human Services Local Office	410 S 11 th St	641.673.3496
Engineer	2074 Old Highway 163	641.672.2897
Environmental Services	2074 Old Highway 163	641.673.6371
Emergency Management	214 High Ave E	641.672.1209
Jail Location	214 High Ave E	641.673.2591
General Relief	106 S 1 st St	641.673.2625
GIS Coordinator	106 S 1 st St	641.673.1454
Post Office		
Fremont	110 E Main St	641.933.4746
Leighton	219 Otley St	641.626.3107
New Sharon	106 S Pearl St	641.637.4145
Oskaloosa	113 6 th Ave E	641.673.6547
Mahaska Drug	205 N E St	800.275.8777
University Park	2204 9 th Ave E	
Rose Hill	339 Main St	641.632.8374
Eddyville	102 Walnut St	641.969.4648
Cedar	Cedar, IA	800.275.8777
Public Health	1225 C Ave E	641.673.3257
Recorder	106 S 1 st St	641.673.8187
Sheriff	214 High Ave E	641.673.4322
Social Security Administration	1301 N Elm St (Ottumwa)	866.964.7394
Treasurer		
Auto Department	106 S 1 st St	641.673.4618
Driver's License	106 S 1 st St	641.673.9521
Tax Department	106 S 1 st St	641.673.5482
Veterans Affairs	106 S 1 st St	641.673.7727
Zoning Administrator	804 S D St	641.673.7472

Churches in Mahaska County

Church	Location	Phone
Assembly of God Church	Highway 23	641.672.2503
Barnes City United Methodist	Barnes City, IA 50027	515.623.3447
Beacon United Methodist	Beacon, IA 52534	641.673.7623
Bethel Baptist Church	1407 A Ave W	641.673.7623
Bethel Christian Reformed Church	2157 230th St	641.673.4679
Calvary Bible Church	1411 S 11th St	641.673.8826
Cedar United Methodist	2802 305 th Street, Cedar	
Central Reformed Church	815 2nd Ave E	641.673.7293
Central United Methodist Church	201 N Market St	641.672.2564
Christian Science Church	215 A Ave W	641.672.2257
Jesus Christ Latter Day Saints Church	1714 Pella Ave	641.673.0619
College Avenue Friends Church	912 N C St	641.673.8357
Community of Christ	330 N 6th St	641.673.6474
Emmanuel Baptist Church	416 3rd Ave W	641.673.6371
Evangelical Church	1513 S Market St	641.672.2267
Faith Evangelical Methodist Church	1004 S 18th St	641.672.0200
Fellowship Bible Church	1000 A Ave	641.672.2225
First Baptist Church-American Baptist	209 S 3rd St	641.673.7253
First Christian Church	119 A Ave E	641.673.4671
First Christian Reformed Church	815 N 11th St	641.673.4272
First Church of the Open Bible	509 S A St	641.673.7136
First Pentecostal Church	537 Spring Creek Village Ct	641.672.2865
First Pentecostal Church	416 2nd Ave E	641.673.4277
First Presbyterian Church	405 High Ave	641.673.8879
Gateway Church of the Nazarene	140 Gateway Dr	641.673.3417
Good News Chapel	603 S H St	641.673.5370
Grace Evangelical Lutheran Church	1718 9th Ave	641.672.2762
Hillside Bible Church	2352 Highway 92	641.673.4671
Jehovah's Witnesses	1712 S Market St	641.673.5748
Jubilee Family Church	401 S D St	641.673.9852
Landmark Church of God	311 S 5th St	641.673.3425
New Hope Free Methodist Church	821 8th Ave	641.673.5562
Park Church of Christ	1804 Burlington Rd	641.673.4481
Saint James Episcopal Church	207 S 3rd St	641.673.4218
Saint John Lutheran Church	2370 Merino Ave	641.673.6546
Saint Mary's Catholic Church	315 1st Ave	641.673.6680
Saint Paul Congregational	501 High Avenue East	641.673.7206
Two Timbers Church of Christ	215 A Ave West	641.673.4569

ABUSE AND PREVENTION- DOMESTIC

Child Abuse 24 Hour Crisis Hotline

Child Abuse reporting and investigation. All calls confidential, available in over 200 languages.

National Hotline Phone: 1.800.422.4453

Iowa Hotline Phone: 1.800.362.2178

Child Abuse Reporting

Report child abuse to local authorities

Mahaska County DHS: 641.673.3496.

If Child is in immediate danger, call 911.

Children and Families of Iowa

Family violence center open to anyone with ongoing safety concerns

1111 University Ave

Fax: 515.288.9109

Des Moines, IA 50314

E-mail: contactus@cfiowa.org

Phone: 515.697.7949

Crisis Intervention Services

For victims of domestic abuse and sexual assault, personal advocacy, and homelessness

500 High Ave West

E-mail: help@stopdvsa.org

Oskaloosa, IA 52577

Website: www.stopdvsa.org

Phone: 641.673.0336 (Office)

1.844.673.5499 (Emergency Housing Line)

1.800.270.1620 (Sexual Assault Hotline)

Dependent Adult Abuse 24 Hour Crisis Toll-Free Hotline

Counseling, information, and referrals

Phone: 800.362.2178

Domestic Abuse Hotline

Support for victims of domestic abuse

Phone: 800.842.0333 (state)

800.799.7233 (national)

Or live chat here: <http://www.thehotline.org/contact/>

Advocates who are deaf are available Monday to Friday, 9 a.m. to 5 p.m. (PST) by videophone (855-812-1001), instant messenger (DeafHotline) or email (deafhelp@thehotline.org).

Prevent Child Abuse Iowa (PCAI)

Funds educational programs and advocacy to prevent child abuse

505 5th Ave, Suite 900

Fax: 515.280.7835

Des Moines, IA 50309

E-mail: www.pcaia@pcaiowa.org

Phone: 515.244.2200

Website: www.pcaiowa.org

800.237.1815 (24 hour toll free hotline)

ABUSE AND PREVENTION- SEXUAL

Crisis Intervention Services

Emergency shelter & transitional nursery for victims of domestic abuse and sexual assault

CIS Office Phone: 641.673.0336
500 High Ave W
Oskaloosa, IA 52577

Sex Abuse Prevention Education Program

Sex abuse education via school/group presentations

712 Union St Fax: 641.628.3181
Pella, IA 50219 E-mail: pambettger@gmail.com
Phone: 641.628.1212 Website(s): <http://crossroadspella.org/prevention-programs/>
515.447.3383 <http://www.cppconline1.com/>
888.322.6299 (24 hour)

ABUSE AND PREVENTION- SUBSTANCE RELATED

Addictions Recovery Center

Outpatient substance abuse treatment: evaluations and aftercare for adults

410 East Robinson
Knoxville, IA 50311 Phone: 641.842.2813

Alcoholics Anonymous

Provides peer support for overcoming alcohol abuse

2626 Lincoln Ave (meeting locations vary)
Oskaloosa, IA 52577 Phone: 641.673.3763

Narcotics Anonymous

Provides peer support for overcoming narcotic abuse

Phone: 515.244-2277

Alcohol-Drug Treatment Referrals

Phone: 1.206.722.3700

Capstone Behavioral Healthcare, Inc.

Outpatient mental health and substance abuse treatment services

306 North 3rd Ave E Phone: 641.792.4012 Fax: 641.791.0697
Newton, IA 50208 E-mail: julies@capstonebh.org

Lutheran Services in Iowa

Provides respite, SCL, and remedial services

1714 N. 4th Ave. E., Suite B 3125 Cottage Grove Ave
Newton, IA 50208 Des Moines, IA 50311 website: <http://lsiowa.org/>
Phone: 641.792.1541 Phone: 515.271.7411 Fax: 641.792.1542

Prevention Concepts, Inc.

Specializes in prevention for substance abuse & addictions involving drugs, alcohol, & gambling

909 E 2nd Ave, Suite G

Fax: 515.961.2275

Indianola, IA 50125

E-mail: info@preventionconcepts.org

Phone: 515.961.8830 or 888.961.8830

Website: <http://www.sieda.org>

Southern Iowa Economic Development Association (SIEDA) Substance Abuse Services

Comprehensive substance abuse prevention services within the community

114 North Market St

Phone: 641.673.8758

E-mail:

kmiller@sieda.org

Oskaloosa, IA 52577

Website: <http://www.sieda.org>

ASSISTANCE- CLOTHING

Clothing Closet

Free clothing offered every 3rd Saturday of the month from 9am to 11am or by appointment.

The Straight House

Phone: 641.676.1421

604 N B St

641.672.2503

Oskaloosa, IA 52577

Helping Hands

Low cost or free household and clothing items, 6 apartments available for short term housing

117 E Main St

Knoxville, IA 50138

Phone: 641.842.6933

Mahaska County Outreach

Donated clothing/household items at reasonable prices or free with certain agency referrals.

114 N 1st St

Oskaloosa, IA 52577

Phone: 641.672.2908

Pella Clothing Bank

Accepts clean used clothing and offers it at very little or no cost to area families

712 Union St (use west front doors)

Phone: 641.628.4571

Pella, IA 50219

open: Tuesday 5-7pm and Wed/Fri 1-4pm

Pella Community Thrift Shop

Low cost used clothing, furniture, linens, and housewares

419 E Oskaloosa St

Hours: Mon-Sat 10am-4:30pm

Pella, IA 50219

Phone: 641.628.3333

New Hope Community Center

Locally donated clothing at low prices with the option to work off the total.

P.O. Box 565

308 5th Ave W

Oskaloosa, IA 52577

Phone: 641.676.1601

ASSISTANCE-FINANCIAL/BASIC NEEDS

Child Care Assistance (CCA)

Provides financial aid to qualifying families who need help paying for child care; Application can be downloaded from DHS' website, picked up at your local DHS office, or call the number listed below.

410 S 11th St
Oskaloosa, IA 52577

Website: www.dhs.iowa.gov/child-care
Phone: 641.673.3496

Love in the Name of Christ (Love INC)

Financial support and utility assistance, budgeting & faith workshops, and referrals.

500 High Ave W
Oskaloosa, IA 52577

E-mail: loveincofmahaskacounty@gmail.com
Phone: 641.676.3750

Mahaska County Community Services and General Relief

Assistance with rent, utilities, medical expenses, and food for low-income families. Case management available for persons with disabilities.

301 1st Ave E
Oskaloosa, IA 52577

Phone: 641.672.2625
Fax: 641.676.1053

Mahaska County Homelessness Coalition

Bringing resources, support and hope to people struggling with homelessness.

500 High Ave West
Oskaloosa, IA 52577

Phone: 641.670.0717

Iowa State University Extension and Outreach - Mahaska County

Financial Management

212 North I St
Oskaloosa, IA 52577
Phone: 641.673.5841

Fax: 641.673.1559
E-mail: vermeerA@iastate.edu
Website: www.extension.iastate.edu/mahaska

Salvation Army

Provides some transitional assistance may help with rent but cannot contribute to deposits or first month's rent. Agency doesn't have an office. Please call for appointment.

Phone: 641.295.0942

Southern Central Iowa Center for Independent Living (SCICL)

Financial Management

117 1st Ave W
Oskaloosa, IA 52577

Phone: 641.672.1867

Southern Iowa Economic Development Association (SIEDA) Neighborhood Resource Center

Basic needs, energy assistance for utilities

114 North Market St
Oskaloosa, IA 52577

Website: <http://www.sieda.org/sites2.htm>
Phone: 641.673.8758

StandUp Wireless

100% free mobile phones to those who qualify. Phones have 250 minutes/month. No hidden fees or costs. Application is online.

Website: <http://www.standupwireless.com/>

ASSISTANCE- FOOD

Ecumenical Food Cupboard

Provides food & basic hygiene items through donations and volunteers.

205 S D St

Oskaloosa, IA 52577

Phone: 641.676.4031

E-mail: tec@mahaska.org

Free and Reduced School Lunches

Eddyville-Blakesburg: 641.969.4288

North Mahaska Schools: 641.637.4187

Fremont Elementary: 641.933.4211

Oskaloosa School District: 641.673.3407 ext. 1823

Self Help and Resource Exchange (SHARE) Iowa

Offer monthly food packages in exchange for volunteer service and a fee; accepts food stamps

P.O. Box 328

1102 S 7th St

Oskaloosa, IA 52577

Website: www.shareiowa.com

Phone: 641.673.4000

Summer Lunch Program

Lunch served for children 18 and under every week day, all summer long. Great opportunity for volunteers! Check United Way and Facebook for frequent updates.

201 N Market St

Oskaloosa, IA 52577

website: <http://www.unitedwaymahaska.org/>

Phone: 641.660.5264

Food Bank of Southern Iowa

Warehouses food for church and community pantries.

P.O. Box 1294

705 West Main St.

Ottumwa, IA 52501

E-mail: fbosi@lisco.com

Website: americassecondharvest.com

Phone: 641.682.3403

CHILD CARE-AFER SCHOOL CARE & SUMMER PROGRAMS

After School Fun Club

Held in the commons at Oskaloosa Elementary School, the program is for kindergarten-5th grade and runs from 3-6pm weekdays. Oskaloosa Christian School children also welcome.

1801 Orchard Avenue

Oskaloosa, IA 52577

Phone: 641.673.8411

Mahaska County YMCA

Summer day camps run from the end of May to mid-August

414 N 3rd St

Oskaloosa, IA 52577

Phone: 641.673.8411

Website: www.mahaskaymca.org

New Hope Community Center

Supplies children with free activities before and after school. Tutoring is also available.

P.O Box 565

308 5th W St

Oskaloosa, IA 52577

E-mail: leslierice@mahaska.org

Phone: 641.673.8411

CHILD CARE- CHILD CARE CENTERS/PRESCHOOLS

Eddyville Childcare & Family

702 Vance St

Eddyville, IA 52553

Phone: 641.969.4343

Kids' Corner Childcare (YMCA)

For children ages 0-2. Classes for 3-5 year old children are located in the Webster Preschool Partnership Building.

2300 8th Avenue E

University Park, IA 52595

Phone: 641.673.7409

Website: www.mahaskaymca.org

Little Creations Preschool

201 N Market St

Oskaloosa, IA 52577

Phone: 641.672.2564

Mahaska County YMCA

414 N 3rd St

Oskaloosa, IA 52577

Phone: 641.672.2564

Website: www.mahaskaymca.org

New Sharon Child Care and Preschool

2163 135th St

New Sharon, IA 50207

Phone: 641.637.2295

Oskaloosa Preschool and KinderPrep

508 S 7th St

Oskaloosa, IA 52577

Preschool Phone: 641.676.1632

Website: www.oskaloosa.k12.ia.us/OCSD/preschool/index/html

KinderPrep Phone: 641.676.3783

Peek-A-Boo Point Day Care

P.O Box 567

604 N B St

Oskaloosa, IA 52577

Fax: 641.676.1422

E-mail: peekaboopoint@aol.com

Phone: 641.676.1421

SIEDA Head Start

114 N Market St
Oskaloosa, IA 52577

Website: www.sieda.org/sites2.htm
Phone: 641.673.5958

SONshine Preschool

726 N E St
Oskaloosa, IA 52577
Phone: 641.673.9472

Website: sonshine@oskaloosachristian.net
E-mail: www.sonshinepreschool.org

TLC Day Care and Learning Center

211 N C St
Oskaloosa, IA 52577

E-mail: bkklee@kdsi.net
Phone: 641.673.0588

COMMUNITY GROUPS

Oskaloosa Area Chamber and Development Group

124 N Market St
Oskaloosa, IA 52577

Fax: 641.628.1579
Phone: 641.672.2591

COUNSELING

Bethany Christian Services

617 Franklin St #201
Pella, IA 50219
Phone: 641.628.3247 or 888.791.3981

Fax: 641.628.1579
E-mail: bcdesmoines@bethany.org
Website: www.bethany.org

Birthright of Iowa

Support to girls and women who are distressed by unplanned pregnancy

613 South B St
Oskaloosa, IA 52577

Website: www.birthright.org
Phone: 641.673.9722

Boys Town National Hotline

24hr hotline with professional counselors for intervention & referrals for children and families.

Phone: 800.448.3000

Consumer Credit Counseling

Free financial counseling & foreclosure mitigation. Debt mgmt planning, bankruptcy education & counseling and reverse mortgage counseling may require a small fee. Counseling centers are located in several central Iowa communities or counseling can be over phone.

1003 West 4th St
Waterloo, IA 50702

Fax: www.ccsia.org
Phone: 319.234.5472

Consumer Credit of Des Moines

Non-profit organization specializing in debt consolidation services

6129 Southwest 63rd St
Des Moines, IA 50321
Phone: 877.978.5742

Fax: 641.628.3181
E-mail: info@consumercredit-dm.com
Website: www.consumercredit-dm.com/

Crossroads of Pella

Free short-term counseling

712 Union StRm 301
Pella, IA 50219
Phone: 641.628.1212

Fax: 641.628.3181
E-mail: info@crossroadspella.org
Website: www.crossroadspella.org

Des Moines Pastoral Counseling Center

Offers full-range of general and psychotherapy services; fees based on clients ability to pay

8553 Urbandale Avenue
Urbandale, IA 50322
Phone: 515.274.4006

Fax: 515.255.5697
E-mail: info@dmppc.org
Website: www.dmppc.org

First Resources

Family/individual therapy, family prevention services, community living, respite care, foster care, adoption care services, substance abuse testing, and sexual abuse treatment

1907 17th E
Oskaloosa, IA 52577

Integrative Counseling Solutions

Mental health assessment, counseling, and referral for adults, children, teens, and families

909 West Pleasant St
Knoxville, IA 50138

E-mail: integrative_counseling@q.com
Phone: 641.842.4357

Mahaska Hospice Auxiliary

Offers end of life counseling & support for patients, patient families, & those losing a loved one

1229 C Ave E
Oskaloosa, IA 52577

Website: www.mahaskahealth.com
Phone: 641.672.3260 (hospice house)

New Directions

Counseling, medication management, psychological testing & consultation, substance abuse evaluations & treatment

Mahaska Health Partnership
1229 Ave E Suite C
Oskaloosa, IA 52577

Phone: 641.672.3159

Orchard Place

State-accredited mental health center for children and families

2116 Grand Ave
Des Moines, IA 50312
Phone: 515.246.3514

Fax: 515.244.1922
Website: www.orchardplace.org

Pathways of Pella

Offers confidential pregnancy support services, free pregnancy & STD testing, parenting support, and abortion recovery.

703 Main St
Pella, IA 50219

Website: <http://pathwayspella.org/>
Phone: 641.628.4827 or 800.395.4357 (after hours)

Pine Rest Christian Mental Health Services

Provides therapy for children, adolescents, adults, and families and also provides case management for psychiatric diagnosis

2611 Washington St
Pella, IA 50219

Fax: 641.621.1493
Website: www.pinerest.org

Phone: 641.628.9599
or 800.274.9278

Planned Parenthood Knoxville Center

Personal check-ups, pregnancy education and support services

909 W Pleasant St
Knoxville, IA 50138

Fax: 641.842.6478
Website: www.ppgi.org

Phone: 641.842.5460
Toll Free: 877.811.7526

Teen Pregnancy and Parenting Program

Serving women ages 13-18 with counseling & health services related to their pregnancies. A caseworker is assigned to each individual client.

House of Mercy
1409 Clark St
Des Moines, IA 50314

Phone: 515.643.6500
or 800.796.5730

DISABILITY SERVICES

Christian Opportunity Center

Community based and facility based employment offering vocational training and placement

110 B Ave
Oskaloosa, IA 52577

Website: www.christianopportunity.org
Phone: 641.673.9480

Great Prairie Area Education Agency

Identification, evaluation, and placement of children with disabilities

2814 N Court St
Ottumwa, IA 52501
Phone: 641.682.8591 | 800.622.0027

Fax: 641.682.9083
E-mail: comments@gpaea.k12.ia.us
Website: www.gpaea.k12.ia.ua

Imagine the Possibilities

Supported community living and respite care services for adults and children

P.O. Box 1092
1701 S 3rd Ave E, Suite 6
Oskaloosa, IA 52577

Fax: 641.673.0195
E-mail: wendy@imagine-the-possibilities.org
Phone: 641.673.3459

Iowa Compass

Information and referral for Iowans with disabilities

100 Hawkins Drive, # 295
Iowa City, IA 52242
Phone: 800.779.2001

E-mail: iowa-compass@uiowa.edu
Website: www.iowacompass.org

Iowa Vocational Rehabilitation Services

Works with person with disabilities to achieve their employment, independence and economic goals

16260 Truman St, Suite 4
Ottumwa, IA 52501
Phone: 641.682.7569
Website: www.ivrs.iowa.gov

306 N Sherman St
Knoxville, IA 50138
Fax: 641.682.6219

South Central Iowa Center for Independent Living (SCICL)

Assists persons with disabilities in efforts to live independently

117 1st Ave W
Oskaloosa, IA 52577

E-mail: brookie43@gmail.com
Phone and fax: 641.672.1867

TENCO Industries

Builds opportunities for people with disabilities to work, learn life skills, and interact in the community.

117 N. 1st Street
Oskaloosa, IA 52577

E-mail: llenertz@tenco.org
Phone and fax: 641.569.9138

DISASTER ASSISTANCE**American Red Cross, Southern Prairie Chapter**

Assists persons with disabilities in efforts to live independently

408 E. Main Street
Ottumwa, IA 52501

Fax: 641.682.1359
Phone: 641.682.4571

Emergency Management of Mahaska County

214 High Ave E
Oskaloosa, IA 52577

Website: <https://www.mahaskaready.com/>
Phone: 641.672.1209

Love in the Name of Christ (Love INC)

Non-profit organization working to assist those with needs such as rental, utilities, transportation assistance to medical appointments, and referrals.

P.O. Box 213
500 High Ave W
Oskaloosa, IA 52577

E-mail: loveincofmahaskacounty@gmail.com
Phone: 641.676.3750

Mahaska County E911 Center

Dispatch and communication for medical, fire, and law enforcement

214 High Ave E
Oskaloosa, IA 52577

Phone: 641.673.0347

Police Department

214 High Ave E
Oskaloosa, IA 52577

Phone: 641.673.3201

Salvation Army

Responds to local, state, and national disasters, requires referral from Red Cross for disaster related financial assistance.

P.O. Box 487
Oskaloosa, IA 52577

Phone: 641.295.0942

Sheriff's Department

214 High Ave E #1
Oskaloosa, IA 52577

Phone: 641.673.4322

EDUCATION-FAMILY BASED

Children and Families of Iowa Childcare Development Center

Offers child care activities and home based environments

1111 University Ave
Des Moines, IA 50314

Phone: 515.288.1981/Fax: 515.288.9109
E-mail: contacus@cfiowa.org

Children in the Middle Classes- Family Development Associates

Provide "Children in the Middle" and "Mediation Education" classes for divorcing parents

Family Development Associates
P.O. Box 11231
Cedar Rapids, IA 525410

Registration and Class Schedules are Online
Website: www.family-development.org
Phone: 800.261.5097

**Classes conducted locally are on the campus of William Penn University, but registration/payment is through Cedar Rapids office.*

Families First of Pella

Offers activities to strengthen bonds, character, and literacy within the family unit

210 University Ave
Pella, IA 50219

Phone: 641.628.8331
Website: www.familiesfirstofpella.com

Mahaska Health Partnership Birthing Center Classes

Prenatal, Lamaze, and breastfeeding informational classes and workshops

Phone: 641.672.3170

E-mail: birthingclasses@mahaskahealth.org

NEST Program

An incentive program providing parent education and baby supplies

P.O. Box 565

308 5th West St

Oskaloosa, IA 52577

E-mail: leslierice@mahaska.org

Phone: 641.676.1601

*Every Thursday at 4pm

SIEDA Parents as Teachers

personal visits, brain development information, screening, group meetings, resource network

114 N Market St

Oskaloosa, IA 52577

Website: www.sieda.org/

Phone: 641.673.8758

EDUCATION-COLLEGE

Indian Hills Community College

Ottumwa

525 Grandview Ave

Ottumwa, IA 52501

Website: www.indianhills.edu

Phone: 800.726.2585

Oskaloosa ICN Center

1710 N Market St

Oskaloosa, IA 52577

Phone: 641.673.0822/Fax: 641.673.5451

Coordinator: Cherri James

Central College

812 University Ave

Pella, IA 50219

Website: www.central.edu

Phone: 641.628.9000 | 877.462.3687

William Penn University

201 Trueblood Ave

Oskaloosa, IA 52577

Website: www.wmpenn.edu

Phone: 641.673.1012

EDUCATION- ELEMENTARY, MIDDLE, AND HIGH SCHOOL

Oskaloosa Elementary

1801 Orchard Ave

Oskaloosa, IA 52577

Phone: 641.673.8092

Web: <http://oskaloosa.k12.ia.us/>

Grades K-2 Fax: 641.672.3776

Grades 3-5 Fax: 641.672.3777

Oskaloosa Middle School

1704 N 3rd St

Oskaloosa, IA 52577

Phone: 641.673.8308

Web: <http://oskaloosa.k12.ia.us/>

Fax: 641.672.3779

Oskaloosa High School

1816 N 3rd St

Oskaloosa, IA 52577

Phone: 641.673.3407

Website: www.oskaloosa.k12.ia.us

Oskaloosa Christian School (K-8th)

726 N E St
Oskaloosa, IA 52577

Phone: 641.672.2174
Web: www.oskaloosachristian.net

Email: info@oskaloosachristian.net

Eddyville Elementary School

702 Vance St
Eddyville, IA 52553

Phone: 641.969.4681
Website: <http://www.rocketsk12.org/eddyville-elem/>

Blakesburg Elementary School

407 Wilson St
Blakesburg, IA 52536

Phone: 641.938.2203
Website: <http://www.rocketsk12.org/>

Fremont Elementary School

525 E. Main St
Fremont, IA 52561

Phone: 641.933.4211
Website: <http://www.rocketsk12.org/fremont-elementary/>

Fax: 641.933.4123

Eddyville-Blakesburg-Fremont Jr-Sr School

1301 Berdan St
Eddyville, IA 52553

Phone: 641.969.4288
Website: www.ebcds.com

Fax: 641.969.4574

North Mahaska Community School District

P.O. Box 89
2163 135th St
New Sharon, IA 50207

Fax: 641.637.4559 (HS)
641.637.2657 (Elementary)
Website: www.n-mahaska.k12.ia.us

Phone: 641.637.4187 (HS)
641.637.4041 (Elem)

EDUCATION- SPECIAL SERVICES

American Red Cross, Southern Prairie Chapter

Certified classes in health safety

408 E. Main Street
Ottumwa, IA 52501

Fax: 641.682.1359
Phone: 641.682.4571

Apples of Gold Center of Learning

Tutoring & specialized remediation to help students with skill gaps, motivation, and academic success. Assistance for children diagnosed with dyslexia or dysnomia. ACT Prep.

604 Liberty St # 123
Pella, IA 50219

Phone: 641.620.1160

Educational Talent Search (ETS - pre-college)

A college preparatory program for middle and high school students

Central College
812 University Ave
Campus Box 0181
Pella, IA 50219

Phone: 641.628.5294

Indian Hills Community College Small Business Development Center

626 Indian Hills Drive

Ottumwa, IA 52501

Phone: 641.683.5127 or

Fax: 641.683.5296

E-mail: brian.ziegler@indianhills.edu

800.726.2585 ext. 5127

Mahaska County Extension Services (ISU)*Provides information regarding agriculture, business, and continuing education*

212 North I St

Oskaloosa, IA 52577

Phone: 641.673.5841

Fax: 641.673.1559

E-mail: xmahaska@iastate.eduWebsite: www.extension.iastate.edu/mahaska**Southern Central Iowa Center for Independent Living (SCICL)***Assists individuals seeking to earn their GED*117 1st Ave W

Oskaloosa, IA 52577

Phone: 641.672.1867

Upward Bound (Pre-College)*Applicants are at-risk students from participating middle and high schools whose supporting, adoptive or natural parents do not have a four-year degree*

Central College (upstairs in Media Center)

812 University Ave

Campus Box 0182

Pella, IA 50219

Phone: 641.628.7677

(Monday - Friday; 8am - 5pm)

ELECTED OFFICIALS**Mahaska County Board of Supervisors**

Court House

106 S 1st St

Oskaloosa, IA 52577

Phone: 641.673.3469

U.S. Representative

300 E Locust St, Suite 320

Des Moines, IA 50309

Phone: 515.282.1909

Fax: 515.282.1145

National Office:

1427 Longworth HOB

Washington, D.C. 20515

Phone: 202.255.3806

U.S. Senator

733 Federal Building

210 Walnut St

Des Moines, IA 50309

Phone: 515.288.1145

Fax: 515.288.5097

National Office:

135 Hart Senate Building

Washington, D.C. 20515

Phone: 202.224.3744

EMPLOYMENT SERVICES

Experience Works, Inc.

Experience Works offers employment training services through the Senior Community Service Employment Program (SCSEP) to low-income older workers in 59 counties in Iowa.

2973 100th Street, Ste. 8

Fax: 515.598.7806

Urbandale, IA 50322

Email: david_hicks@experienceworks.org

Phone: 515.243.2430

Iowa Comprehensive Human Services

Works with low-income, at-risk youth to provide education, employment goals, and referrals

1111 19th St, #260

Phone: 515.245.7800/Fax: 515.245.7803

Des Moines IA 50316

Web: ichsyouthemployment.org

Iowa Job Corp Admission Office

Federally-funded education and vocational training program run by the Department of Labor.

Aimed at economically-disadvantaged young people ages 16-24.

15229 Truman Street

Phone: 641.682.2000/Fax: 641.682.0519

Ottumwa, IA 52501

Website: <http://www.jobcorps.gov/>

Iowa Workforce Development Center

Promotes economic security through a comprehensive statewide system of employment services, education and regulation of health, safety and employment laws

408 S 11th St

Phone: 641.673.9494/Fax: 641.672.1224

Oskaloosa, IA 52577

Web: www.iowaworkforce.org

Promoting Independence and Self Sufficiency through Employment (PROMISE) Jobs

Iowa's welfare reform program aimed to assist people who receive benefits from the Family Investment Program (FIP) to become self-sufficient.

IA Workforce Development Center

Phone: 641.684.5401/Fax: 641.672.1224

15260 Truman St

Email: region15.web@iwd.iowa.gov

Ottumwa, IA 51501

Web: www.iowaworkforce.org

GROUP HOMES

Imagine the Possibilities

Supported community living for persons with disabilities

P.O. Box 1092

Fax: 641.673.0195

1701 3rd Ave E, Suite 6

E-mail: wendy@imagine-the-possibilities.org

Oskaloosa, IA 52577

Phone: 641.673.3459

HEALTH CARE SERVICES AND ASSISTANCE

American Cancer Society

Work to prevent cancer. Host fundraisers, accept volunteers, perform cancer screens, etc.

1717 Ingersoll Ave #111

Phone: 800.227.2345 (toll free)

Des Moines, IA 50309

Website: www.cancer.org/index

Ask-A-Nurse

Operated out of Mercy Medical in Des Moines, free answers to medical questions. No appointment necessary.

Phone: 844.630.9822

Website: mercydesmoines.org

Good Samaritan Free Clinic

Offered only to the uninsured or those with IowaCare, accepts volunteers and job shadowers.

Pella First Reformed Church

Phone: 641.621.1606

603 Broadway Ave

or 641.780.0864

Pella, IA 50219

email: juliehooyer@iowatelecom.net

Open every first, second, and third Thursdays of the month from 6pm to 7pm

Hawk-I (Healthy & Well Kids in Iowa)

Insurance for kids whose family meets certain income limits, dental insurance is also offered

Pick up applications at::

Online applications:

Medical Group

Website: www.hawk-i.org/

1225 C Ave E

Phone: 1.800.257.8563

Oskaloosa, IA 52577

Heartland Pregnancy Center

Confidential services offered at no cost

101 S Market St, # 302

Website: www.ottumwachoices.com

Ottumwa, IA 52501

Phone: 641.683.3030

Planned Parenthood Knoxville Center

Personal check-ups, pregnancy education and support services

909 W Pleasant St

Phone: 877.811.7526/Fax: 641.842.6478

Knoxville, IA 50138

Website: www.ppgi.org

River Hills Community Health Center

Offers sliding scale fees

201 S Market St

Fax: 641.226.5759

Ottumwa, IA 52501

Phone: 641.683.5773

Southern Iowa Family Planning

Planning well-woman check-ups, STD screenings and treatments, breast and cervical exams

Medical Group

Phone: 641.682.9955

1225 C Ave E

800.452.3365

Oskaloosa, IA 52577

HEALTH CARE PROVIDERS

Community Health Services at Mahaska Health Partnership (Public)

Including WIC, Meals on Wheels, maternity-support programs, immunizations, and other services aimed at improving the health of our community

1229 C Ave E

Oskaloosa, IA 52577

Phone: 641.673.3257

Pella New Sharon Medical Clinic

302 S Park St

New Sharon, IA 50207

Phone: 1.641.637.4046

Ottumwa Regional Health Center

1001 Pennsylvania Ave

Ottumwa, IA 52501

Phone: 641.684.2300

University of Iowa Hospitals and Clinics

200 Hawkins Drive

Iowa City, IA 52242

Phone: 319.356.1616

HOUSING- SUBSIDIZED AND/OR LOW-INCOME

Area XV Multi-County Housing Authority

Section 8 Housing Assistance, Public Housing, and Area 15 Apartments Program

417 N College St

Agency, IA 52530

Phone: 641.937.5222

Rural Development Program

(Home Improvement Program):

Phone: 641.932.3031

Fair Housing/Equal Opportunity Hotline

Phone: 800.669.9777

Keyway Management Company

Affordable rental housing for disabled seniors age 62 or older

Highland Park Apartments

109 18th Ave E

Oskaloosa, IA 52577

Phone: 641.673.4599

Oskaloosa Park Apartments

1210 S F St

Oskaloosa, IA 52577

Phone: 641.673.0364

Mahaska County Habitat for Humanity

Works in partnership with people in need to build and renovate decent, affordable housing which is then sold to those in need at no profit with no interest charged

P.O. Box 583

201 N Market St

Oskaloosa, IA 52577

E-mail: director@mahaskahfh.org

Phone: 641.295.5805

Mahaska County Homelessness Coalition

Strives to resolve homelessness issues, whether temporary or long-term in nature, and raise awareness of homelessness in our area.

P.O. Box 281

Oskaloosa, IA 52577

Phone: 641.670.0717

Oskaloosa Municipal Housing Agency

Rental assistance based on income; liaison for landlord/tenant issues, Section 8 Housing Choice Vouchers for Oskaloosa Residents

220 S Market St

Oskaloosa, IA 52577

E-mail: oskaloosa.housing@oskaloosaiowa.org

Phone: 641.673.8361

Oskaloosa Housing Trust Fund

First-time home buyer assistance and demolition assistance programs

220 S Market St

Oskaloosa, IA 52577

website: <http://www.oskaloosaiowa.org/>

Phone: 641.673.9431

USDA Rural Development- Area 5

Provides loans and grants for businesses and home ownership expenses for the purpose of vitalizing rural areas

1709 S B St

Albia, IA 52531

Fax: 855.251.2237

Phone: 641.932.3031

HUMAN SERVICES**American Home Finding Association**

Adoption & pregnancy counseling for anyone. Custody home, and emergency shelter care.

P.O. Box 656

215 E 5th St

Ottumwa, IA 52501

Website: www.ahfa.org

Phone: 641.682.3449

or 800.290.0876

Family Development and Self-Sufficiency (FaDSS) Program

Family development and self-sufficiency planning, in home visits; assessments and goal setting, referral, advocacy, support, special needs

SIEDA

114 N Market St

Oskaloosa, IA 52577

Website: www.sieda.org/sites2.htm

email: janderson@sieda.org

Phone: 641.673.8758

Iowa Department of Human Services (DHS)

Family preservation, foster care, shelter care, adoption, child abuse, family therapy, FIP, emergency energy assistance, medical assistance, and food stamps

410 S 11th St

Oskaloosa, IA 52577

Phone: 641.622.2090

Southern Iowa Economic Development Association (SIEDA)

114 N Market St

Oskaloosa, IA 52577

Website: www.sieda.org/sites2.htm

Phone: 641.673.5958

United States Social Security Administration

Application processing for Social Security benefits, retirement, disabilities, survivors, and Medicare entitlement

2429 Northgate St, Suite A
Ottumwa, IA 52501

Phone: 866.964.7394
Website: www.ssa.gov

United Way of Mahaska County

Provides community awareness of and funding for non-profit agencies. Operates a seasonal Winter Coat Drive, Operation Backpack/Stuff the Bus, 5K and Family Day, and a seasonal VITA Tax site.

500 High Ave E
Oskaloosa, IA 52577
E-mail: unitedway@mahaska.org

Phone: 641.673.6043
Website: www.unitedwaymahaska.org

Wapello County DHS Decat/Empowerment Office

Tailors services to the individual needs of children and families

120 E Main St
Ottumwa, IA 52501

Phone: 641.682.8793

LAW ENFORCEMENT AND CRIME PREVENTION OR SERVICES

Child Support Recovery Unit

1200 University Ave
Des Moines, IA

Phone: 888.229.9223
Website: secureapp.dhs.state.ia.us/

Crime Victim Compensation

Helps victims or family of victims of violent crimes recover some related expenses. Application on website.

Phone: 800.373.5044

Website: <https://victimsofcrime.org/>

Eighth Judicial Department of Corrections

Education program for domestic abuse offenders

1805 W Jefferson, PO #1060
Fairfield, IA 52556

Fax: 641.472.9966
Phone: 641.472.4242

Non-Emergency Police

Oskaloosa/Fremont: 641.672.2557

New Sharon: 641.637.1739

LEGAL SERVICES

Mahaska County Attorney

Mahaska County Courthouse
106 S 1st St
Oskaloosa, IA 52577

Phone: 641.673.9819

Lawyer Referral Service

\$25 for a half-hour consultation

Website: www.iowafindalawyer.com

Legal Hotline for Older Iowans

Provides statewide service to Iowans 60 years and older

Phone: 515.282.8161 or 1.800.992.8161

Legal Services Corporation of Iowa (Iowa Legal Aid)

Free advice/representation to low-income persons regarding certain civil matters

112 3rd St E

Fax: 641.683.3166

Ottumwa, IA 52501

Phone: 641.683.3166 or 800.452.0007 (toll-free)

Website: www.iowalegalaid.org

Youth Law Hotline

For children under the age of 18

Phone: 800.728.1172

NURSING HOMES, ASSISTED AND INDEPENDENT LIVING

Crystal Heights Care Center

1514 High Ave W

Oskaloosa, IA 52577

E-mail: joely@mahaska.org

Phone: 641.673.7032

Iowa Health Care Association

Represents long-term care facilities and provides information on options available

1775 90th St,

Phone: 515.978.2204/Fax: 515.327.5019

West Des Moines, IA 50266

E-mail: ihca@iowahealthcare.org

Website: www.iowahealthcare.org

Homestead of Oskaloosa (Formerly Maple Ridge)

2102 S Market St

Oskaloosa, IA 52577

Phone: 641.672.1090

North Mahaska Specialty Care

Care for elderly Iowans

2401 Crestview Drive

Oskaloosa, IA 52577

Phone: 641.673.3000/Fax: 641.673.5987

E-mail: llee@careinitiatives.org

Oskaloosa Care Center

605 Hwy 432

Oskaloosa, IA 52577

Phone: 641.676.3414

White Oak Estates

914 N 12th St
Oskaloosa, IA 52577

Phone: 641.673.4443

RECREATION**Mahaska Community Recreation Foundation**

Administers the Lacey Recreation Complex and the Mahaska Community Recreation Trail

2055 238th St
Oskaloosa, IA 52577
E-mail: sherry.vavra@mcrf.mahaska.org

Phone: 641.672.2499

Website: www.teammahaska.org

Mahaska County Conservation Board

Administers county parks and rents shelters and cabins (for full listing of parks in Mahaska County, visit the website listed below)

2254 200th St
New Sharon, IA 50207

Website: www.mahaskaconservation.com

Phone: 641.673.9327

Oskaloosa Parks and Recreation

Edmundson, VanderWilt, and the City Square

220 S Market St
Oskaloosa, IA 52577
Phone: 641.673.9431

E-mail: city@oskaloosaiowa.org

Website: [www.oskaloosaiowa.org/
recreation/recreation.php](http://www.oskaloosaiowa.org/recreation/recreation.php)

Wesley Woods Camp and Retreat Center

Offers 125 different kinds of summer camps

10896 Nixon St
Indianola, IA 50125
Phone: 866.684.7753

Fax: 515.961.4162

E-mail: wesleywoods.camp@iaumc.org

Website: www.wesleywoodsiaowa.org

REFERRAL**Mahaska County Extension Services (ISU)**

Provides information regarding agricultural, business, and continuing education

212 N I St
Oskaloosa, IA 52577
Website: www.extension.iastate.edu/mahaska

Phone: 641.673.5841/Fax: 641.673.0559

E-mail: xmahaska@iastate.edu

SENIOR SERVICES**Aging Resources**

Serves the 80+ population and their caregivers

5835 Grand Ave, Suite 108
Des Moines, IA 50309

Phone: 515.225.1310/Fax: 515.244.7767

Website: www.agingresources.com

American Association of Retired Persons (AARP) Iowa

Employment options, etc. for persons over 55 years of age

600 E Court Ave, Suite 100
Des Moines, IA 50319

Phone: 866.554.5378/Fax: 515.244.7767
Website: www.aarp.org/states/ia

Community Health Services at Mahaska Health Partnership

Meals on wheels, immunizations, etc.

1229 C Ave E
Oskaloosa, IA 52577

Phone: 641.672.3100

Seneca Area Agency on Aging New Sharon Community Center

111 E Market St
New Sharon, IA 50207
E-mail: mahcenter@seneca-aaa.org

Phone: 641.637.4550
Website: www.seneca-aaa.org

Milestones

Senior citizen for congregate, home delivered meals, case management services and transportation

715 B Ave E
Oskaloosa, IA 52577

Phone: 641.673.3033 Fax: 641.673.0440
Website: www.milestonesaaa.org

United States Social Security Administration

Application processing for Social Security benefits, retirement, disability, survivors, and Medicare entitlement

2429 Northgate St. #A
Ottumwa, IA 52501

Website: www.ssa.gov
Phone: 866.964.7394

SHELTERS/HOMELESSNESS RESOLUTION**Crisis Intervention Services**

Emergency shelter & transitional nursery for victims of domestic abuse and sexual assault

500 High Ave W
Oskaloosa, IA 52577

Phone: 641.673.0336

Emergency and Transitional Housing, YWCA

Transitional housing for women and children (male children under age 10)

717 Grand Ave
Des Moines, IA 50309
E-mail: ywadmin@ywcadsm.org

Phone: 515.244.8961
Website: <http://www.ywca.org/>
Fax: 515.244.1118

Mahaska County Homelessness Coalition

Works to resolve short and long term homelessness in Mahaska County as well as raise awareness of area homelessness issues

P.O. Box 281
Oskaloosa, IA 52577

Fax: 641.676.3750
Phone: 641.670.0717

SUPPORT GROUPS

Alcoholic Anonymous

St Paul's Church
501 High Ave E
(Mon, Thurs @ 7pm)
<http://www.aa-iowa.org/>

St James Episcopal Church
207 S 3rd St
(Sundays @ 4:30pm)

Alcoholics Anonymous at Crossroads of Pella

Pella Community Center
712 Union St, Room 308.

Phone: 641.628.1212
Tuesdays @ 7pm; Sundays @ Noon.

Alzheimer's Support Group

Phone: 641.672.3100

Cardiac Rehab and Sleep Support Group

Mahaska Health Partnership

Phone: 641.672.3226

Edge of Recovery Substance Abuse

103 North 3rd
Oskaloosa, IA 52577

Phone: 641.780.1087

Postpartum Adjustment Group

Pine Rest Des Moines Clinic
6200 Aurora Avenue
Urbandale, IA 50322

Phone: 515.331.0303

TRANSPORTATION

Iowa Department of Human Services, Iowa Medicaid Enterprise (IME) Non- Emergency Medical Transportation

Be prepared with your name, Medicaid number, destination, date, and the nature of your non-emergency medical appointment. These NEMT services are for members with full medicaid benefits.

TMS Management Group

Phone: 866.572.7662

Love in the Name of Christ (Love INC)

Coordinates rides with local volunteers. Rides are typically for out-of-town appointments and depend on the availability of their volunteers.

P.O. Box 213
500 High Ave W
Oskaloosa, IA 52577

E-mail: loveincfmahaskacounty
Phone: 641.676.3750

Oskaloosa Rides

Passes may be purchased at Oskaloosa Hy-Vee Customer Service desk. Anyone under 18 rides free, \$1 per 1-way otherwise. More information and routes on the United Way website.

United Way of Mahaska County
500 High Ave W
Oskaloosa, IA 52577

Phone: 641.673.6043
E-mail: unitedway@mahaska.org
Website: unitedwaymahaska.org

10-15 Transit

Website: www.1015transit.com/

Phone: 641.683.2024

Trailways Bus System

OTTUMWA
210 W Main St
Phone: 641.682.2009

KNOXVILLE
1204 S Lincoln St
Phone: 641.842.3414

VETERAN SERVICES

County of Mahaska Veterans Affairs

106 S 1st St
Oskaloosa, IA 52577

Phone: 641.673.7727

Iowa Veteran's Home

1301 Summit St
Marshalltown, IA 50158

Fax: 641.753.4278
Phone: 641.752.1501

Veterans Administration Community Based Outpatient Clinic

KNOXVILLE
1515 W Pleasant Drive
Knoxville, IA 50138
Phone: 641.828.5019

OTTUMWA
1009 East Pennsylvania Ave
Ottumwa, IA 52501
Phone: 641.683.4300

(Knoxville location will relocate to 1607 N. Lincoln Street, Knoxville, Iowa 50138 after Summer 2017)

YOUTH

4-H Foundation

Hands on learning, research based youth programs and adult mentoring

212 N I St
Oskaloosa, IA 52577
Phone: 641.673.5841 ext. 24

Fax: 641.673.0559
E-mail: vermeera@iastate.edu
Website: www.4-h.org

Boy Scouts of America Mid-Iowa Council

Serves others by helping to instill values in young people while preparing them to achieve their full potential throughout life

Clayman Service Center
6123 Scout Trail
Des Moines, IA 50321

Phone: 515.266.2135/Fax: 515.268.2135
E-mail: mid-iowa.councilbsa@scouting.org
Website: www.mid-iowacouncilbsa.org

Girl Scouts of Greater Iowa

Inspires girls with the highest ideals of character, conduct, patriotism, and service that they may become happy and resourceful citizens

10715 Hickman Rd
Des Moines, IA 50322
Phone: 515.278.2881
800.342.8289
Website: www.girlscoutsiowa.org

Local Office:
500 High Ave W
Oskaloosa, IA 52577
Phone: 641.676.3474
E-mail: lcoughlin@gsiowa.org

Mahaska County YMCA

Water recreation, classes and fitness; after school programs and day care services

414 N 3rd St
Oskaloosa, IA 52577
Phone: 641.673.8411

E-mail: info@mahaskaymca.org
Website: www.mahaskaymca.org

New Hope Community Center

Supplies children with free activities before and after school; tutoring available and slots for summer programming

P.O. Box 565
308 5th W St
Oskaloosa, IA 52577

E-mail: leslierice@mahaska.org
Phone: 641.676.1601

Runaway Hotline

Phone: 800.786.2929

Serve Our Youth Network

Provide high risk youth with emotional support and guidance through mentoring

309 Roosevelt Rd
Pella, IA 50219
Phone: 641.620.9037
515.286.3355 ext. 6818

Fax: 515.286.2232
E-mail: info@serveouryouth.org
Website: www.serveouryouth.org

South Central Iowa Youth for Christ

Mentoring, leadership training, community events and trips

221 1st Ave E
Oskaloosa, IA 52577
Phone: 641.673.3187

E-mail: yfcsi@yahoo.com
Website: sciyouthforchrist.bbnow.org

REFERENCE PAGES

#	
10-15 Transit	27
4-H Foundation	27
A	
AARP	25
Addictions Recovery Center	05
After School Fun Club	08
Aging Resources	24
Alcohol-Drug Treatment Referrals	05
Alcohol Anonymous	05, 26
Alzheimer's Support Group	26
American Cancer Society	18
American Home Finding Association	21
American Red Cross	13, 16
Apples of Gold Center of Learning	16
Area XV Multi-County Housing Authority	20
Ask-A-Nurse	19
Attorney (Mahaska County)	22
B	
Bethany Christian Services	10
Birthing Center Classes	14
Birthingright of Iowa	10
Board of Supervisors (Mahaska County)	17
Boy Scouts of America	28
Boys Town National Hotline	10
C	
Capstone Behavior Healthcare Inc.	05
Cardiac Rehab and Sleep Support Group	26
Central College	15
Child Abuse Reporting	04
Child Abuse 24 Hour Crisis Hotline	04
Child Care Subsidy Program	07
Child Support Recovery Unit	22
Children and Families of Iowa	04, 14
Children in the Middle Classes	14
Christian Opportunity Center	12
Clothing Closet	06
Community Health Services	25
Community Services and General Relief	07

Consumer Credit Counseling	10
Consumer Credit of Des Moines	11
Crime Victim Compensation	22
Crisis Intervention Services	04, 05, 25
Crossroads of Pella	11
Crystal Heights Care Center	23

D

Dependent Adult Abuse 24 Hour Crisis Hotline	04
Department of Corrections	22
Department of Human Services	21
Des Moines Pastoral Counseling Center	11
Domestic Abuse Hotline	04

E

Ecumenical Food Cupboard	08
Eddyville Child Care	09
Eddyville Blakesburg Fremont Elementary School	16
Eddyville Blakesburg Fremont Middle School	16
Eddyville Blakesburg Fremont High School	16
Educational Talent Search (Pre-College)	16
Emergency and Traditional Housing (YWCA)	25
Emergency Management	13
Experience Works Inc.	18

F

Fair Housing/Equal Opportunity Hotline	20
Families First of Pella	14
Family Development and Self-Sufficiency Program	21
First Resources	11
Food Bank of Southern Iowa	08
Free and Reduced School Lunches	08

G

General Relief (Mahaska County)	07
Girl Scouts of Greater Iowa	28
Good Samaritan Free Clinic	19
Great Prairie Area Education Agency	12

H

Habitat for Humanity (Mahaska County)	20
Hawk-I (Healthy and Well Kids in Iowa)	19
Heartland Pregnancy Center	19
Helping Hands	06

I

Imagine the Possibilities	12, 18
Indian Hills Community College (Ottumwa)	15

Indian Hills Community College Sm. Business Development	17
Indian Hills ICN Center (Oskaloosa)	15
Integrative Counseling Solutions	11
Iowa Compass	13
Iowa Comprehensive Human Services	18
Iowa Department of Human Services (DHS)	21, 26
Iowa Health Care Association	23
Iowa Job Corp Admission Office	18
Iowa Legal Aid	23
Iowa Vocational Rehabilitation Services	13
Iowa Workforce Development Center	18
ISU Extension Mahaska County	07, 17, 24
<i>K</i>	
Keyway Management Company	20
Kids' Corner Childcare (YMCA)	09
<i>L</i>	
Lawyer Referral Service	23
Legal Hotline for Older Iowans	23
Little Creations Preschool	09
Love in the Name of Christ (Love INC)	07, 13, 26
Lutheran Services in Iowa	05
<i>M</i>	
Mahaska County Conservation Board	24
Mahaska County Extension Services (ISU)	07, 17, 24
Mahaska County Homelessness Coalition	07, 21, 25
Mahaska County Outreach	06
Mahaska Community Recreation Foundation	24
Mahaska County YMCA	09, 28
Mahaska Health Partnership	14, 20
Mahaska Hospice Auxiliary	11
Milestones Agency on Aging	25
<i>N</i>	
Narcotics Anonymous	05
NEST Program	15
New Directions	11
New Hope Community Center	06, 09, 28
New Sharon Child Care and Preschool	09
New Sharon Medical Clinic	20
Non-Emergency Police	22
North Mahaska Community Schools	16
North Mahaska Nursing and Rehab	23

O

Orchard Place	11
Oskaloosa Area Chamber and Development Group	10
Oskaloosa Care Center	23
Oskaloosa Christian School	16
Oskaloosa Elementary School	15
Oskaloosa High School	15
Oskaloosa Housing Trust Fund	21
Oskaloosa Middle School	15
Oskaloosa Municipal Housing Agency (HUD)	21
Oskaloosa Parks and Recreation	24
Oskaloosa Preschool and KinderPrep	09
Oskaloosa Rides	27
Ottumwa Regional Health Center	20

P

Pathways of Pella	12
Pella Clothing Bank	06
Peek A Boo Point	09
Pella Community Thrift Shop	06
Pine Rest Christian Mental Health Services	12
Planned Parenthood (Knoxville)	12, 19
Police Department	14
Post-Partum Support Group	26
Prevent Child Abuse Iowa	04
Prevention Concepts, Inc.	06
PROMISE Jobs	18

R

Representative (U.S.)	17
River Hills Community Health Center	19
Runaway Hotline	28

S

Salvation Army	07, 14
SCICL	08, 13, 17
Serve Our Youth Network	28
Seneca Area Agency on Aging (New Sharon)	25
Senator (U.S.)	17
Sex Abuse Prevention Education Program	05
SHARE Iowa	08
Sheriff's Department	14
(SIEDA) Head Start	10
(SIEDA) Mahaska County Resource Center	21
(SIEDA) Neighborhood Resource Center	07
(SIEDA) Parents as Teachers	15
(SIEDA) Substance Abuse Services	06
Social Security Administration	22, 25

SONshine Preschool	10
Southern Iowa Family Planning	19
Summer Lunch Program	08
Stand-up Wireless	08
<i>T</i>	
TLC Day Care and Learning Center	10
Teen Pregnancy and Parenting Program	12
Tenco	13
Trailways Bus System	27
<i>U</i>	
United Way of Mahaska County	22
University of Iowa Hospitals and Clinics	20
Upward Bound (Pre-College)	17
USDA Rural Development (Area 5)	21
<i>V</i>	
Veterans Affairs	27
Veteran's Home	27
Veterans Administration Health Care System	27
<i>W</i>	
Wapello County DHS Office	22
Wesley Woods Camp and Retreat Center	24
White Oak Estates	24
William Penn University	15
<i>Y</i>	
YMCA (Mahaska County)	09, 28
Youth for Christ (South Central Iowa)	28
Youth Law Hotline	23

General Online Healthcare Resources

Doctors and Dentists--General

[AMA Physician Select: Online Doctor Finder](#) (American Medical Association) [DocFinder](#) (Administrators in Medicine)
[Find a Dentist](#) (Academy of General Dentistry) [Find a Dentist: ADA Member Directory](#) (American Dental Association)
[Physician Compare](#) (Centers for Medicare & Medicaid Services)

Hospitals and Clinics--General

[Find a Health Center](#) (Health Resources and Services Administration) [Find a Provider: TRICARE Provider Directories](#)
(TRICARE Management Activity) [Hospital Quality Compare](#) (Centers for Medicare & Medicaid Services)

Doctors and Dentists--Specialists

[ACOG's Physician Directory](#) (American College of Obstetricians and Gynecologists) [ACR: Geographic Membership Directory](#) (American College of Rheumatology) [American College of Surgeons Membership Directory](#) (American College of Surgeons) [American Osteopathic Association D.O. Database](#) (American Osteopathic Association) [ASGE: Find a Doctor](#) (American Society for Gastrointestinal Endoscopy) [Cancer Genetics Services Directory](#) (National Cancer Institute) [Child and Adolescent Psychiatrist Finder](#) (American Academy of Child and Adolescent Psychiatry) [Dystonia: Find a Health Care Professional](#) (Dystonia Medical Research Foundation) [Expert Locator: Immunologists](#) (Jeffrey Modell Foundation) [Find a Dermatologic Surgeon](#) (American Society for Dermatologic Surgery) [Find a Dermatologist](#) (American Academy of Dermatology) [Find a Gastroenterologist](#) (American College of Gastroenterology) [Find a Gynecologic Oncologist](#) (Society of Gynecologic Oncologists) [Find a Hand Surgeon](#) (American Society for Surgery of the Hand) [Find a Hematologist](#) (American Society of Hematology) [Find a Neurologist](#) (American Academy of Neurology) [Find a Pediatric Dentist](#) (American Academy of Pediatric Dentistry) [Find a Pediatrician or Pediatric Specialist](#) (American Academy of Pediatrics) [Find a Periodontist](#) (American Academy of Periodontology) [Find a Physical Medicine & Rehabilitation Physician](#) (American Academy of Physical Medicine and Rehabilitation) [Find a Plastic Surgeon](#) (American Society of Plastic Surgeons) [Find a Podiatrist](#) (American Podiatric Medical Association) [Find a Thyroid Specialist](#) (American Thyroid Association) [Find a Urologist](#) (American Urological Association) [Find an ACFAS Physician](#) (American College of Foot and Ankle Surgeons) [Find an Allergist/Immunologist: Search](#) (American Academy of Allergy, Asthma, and Immunology) [Find an Endocrinologist](#) (Hormone Health Network) [Find an Eye M.D.](#) (American Academy of Ophthalmology) [Find an Interventional Radiologist](#) (Society of Interventional Radiology) [Find an Oncologist](#) (American Society of Clinical Oncology) [Find an Oral and Maxillofacial Surgeon](#) (American Association of Oral and Maxillofacial Surgeons) [Find an Orthopaedic Foot and Ankle MD](#) (American Orthopaedic Foot and Ankle Society) [Find an Otolaryngologist \(ENT\)](#) (American Academy of Otolaryngology--Head and Neck Surgery) [Finding an Eye Care Professional](#) (National Eye Institute) [GI Locator Service](#) (American Gastroenterological Association)

Other Healthcare Providers

[AMTA's Find a Massage Therapist](#) (American Massage Therapy Association) [Cancer Genetics Services Directory](#) (National Cancer Institute) [Find a Diabetes Educator](#) (American Association of Diabetes Educators) [Find a Genetic Counselor](#) (National Society of Genetic Counselors) [Find a Midwife](#) (American College of Nurse-Midwives) [Find a Nurse Practitioner](#) (American Academy of Nurse Practitioners) [Find a Physical Therapist](#) (American Physical Therapy Association) [Find a Professional: Online Directory of Audiology and Speech-Language Pathology Programs](#) (American Speech-Language-Hearing Association) [Find a Registered Dietitian](#) (Academy of Nutrition and Dietetics) [Find a Therapist](#) (Anxiety Disorders Association of America) [Find an Audiologist](#) (American Academy of Audiology) [Manual Lymphatic Drainage Therapists](#) (National Lymphedema Network) [National Register of Health Service Providers in Psychology](#) (National Register of Health Service Providers in Psychology) [NCCAOM: Find Nationally Certified Practitioners](#) (National Certification Commission for Acupuncture and Oriental Medicine) [Search for an Emergency Contraception Provider in the United States](#) (Princeton University, Office of Population Research)

Hospitals and Clinics--Specialized

[Accredited Birth Centers](#) (Commission for the Accreditation of Birth Centers) [Alzheimer's Disease Research Centers](#) (National Institute on Aging) [Cystic Fibrosis Foundation: Find a Chapter](#) (Cystic Fibrosis Foundation) [Cystic Fibrosis Foundation: Find an Accredited Care Center](#) (Cystic Fibrosis Foundation) [Dialysis Facility Compare](#) (Centers for Medicare & Medicaid Services) [FDA Certified Mammography Facilities](#) (Food and Drug Administration) [Find a Free Clinic](#) (National Association of Free Clinics) [Find an Indian Health Service Facility](#) (Indian Health Service) [Find Treatment Centers](#) (American Cancer Society) [Genetics Clinic Directory Search](#) (University of Washington) [Locate a Sleep Center in the United States by Zip Code](#) (American Academy of Sleep Medicine) [MDA ALS Centers](#) (Muscular Dystrophy Association) [Mental Health Services Locator](#) (Substance Abuse and Mental Health Services Administration) [NCI Designated Cancer Centers](#) (National Cancer Institute) [Neurofibromatosis Specialists](#) (Children's Tumor Foundation) [Post-Polio Directory 2011: Post-Polio Clinics, Health Professionals, Support Groups](#) (Post-Polio Health International including International Ventilator Users Network) [Spina Bifida Clinic Directory](#) (Spina Bifida Association of America) [Substance Abuse Treatment Facility Locator](#) (Substance Abuse and Mental Health Services Administration) [Transplant Center Search Form](#) (BMT InfoNet) [U.S. NMDP Transplant Centers](#) (National Marrow Donor Program) [VA Health Care Facilities Locator & Directory](#) (Veterans Health Administration) [Where to Donate Blood](#) (AABB) [Where to Donate Cord Blood](#) (National Marrow Donor Program)

Other Healthcare Facilities and Services

[Alzheimer's Disease Resource Locator](#) (Fisher Center for Alzheimer's Research Foundation) [American College of Radiology Accredited Facility Search](#) (American College of Radiology) [APA District Branch / State Association Directory](#) (American Psychiatric Association) [Directory of Organizations \(Deafness and Communication Disorders\)](#) (National Institute on Deafness and Other Communication Disorders) [Dog Guide Schools in the United States](#) (American Foundation for the Blind) [Eldercare Locator](#) (Dept. of Health and Human Services) [Find a Hospice or Palliative Care Program](#) (National Hospice and Palliative Care Organization) [Find Services \(for People with Vision Loss\)](#) (American Foundation for the Blind) [Find Urgent Care Centers by State](#) (Urgent Care Association of America) [Genetic Testing Laboratory Directory](#) (University of Washington) [Home Health Compare](#) (Centers for Medicare & Medicaid Services) [Medicare: Helpful Contacts](#) (Centers for Medicare & Medicaid Services) [Muscular Dystrophy Association Clinics and Services](#) (Muscular Dystrophy Association) [National Foster Care and Adoption Directory Search](#) (Children's Bureau) [Nursing Home Compare](#) (Centers for Medicare & Medicaid Services) [Organizations That Offer Support Services](#) (National Cancer Institute) [Poison Control Centers](#) (American Association of Poison Control Centers) [Resources and Information for Parents about Braille](#) (American Foundation for the Blind) [State-Based Physical Activity Program Directory](#) (Centers for Disease Control and Prevention) [TSA Chapters in the USA](#) (Tourette Syndrome Association) [Violence against Women: Resources by State](#) (Dept. of Health and Human Services, Office on Women's Health) [Where to Find Hair Loss Accessories and Breast Cancer Products](#) (American Cancer Society)

SOURCE: MedlinePlus provides links to directories to help you find libraries, health professionals, services and facilities. National Library of Medicine (NLM) does not endorse or recommend the organizations that produce these directories, nor the individuals or organizations that are included in the directories.

V. Detail Exhibits

[VVV Consultants LLC]

Patient Origin and Access

Mahaska County	2013 FY						
Discharges	<18	18-44	45-64	65-74	75+		Total
Oskaloosa - Mahaska Health Partnership	140	202	181	166	471	51%	1,160
Pella - Pella Regional Health Center	87	92	30	19	33	11%	261
Des Moines - Mercy Medical Center-Des Moines	18	30	72	52	42	9%	214
Iowa City - Univ. Of Iowa Hospitals and Clinics	21	58	63	31	24	9%	197
Des Moines - UnityPoint Health - Iowa Meth Med Center	43	24	42	45	50	9%	204
Ottumwa - Ottumwa Regional Health Center	19	24	15	11	15	4%	84
Grinnell - Grinnell Regional Medical Center	5	11	14	4	14	2%	48
West Des Moines - Mercy Medical Center-West Lakes		1	11	5	7	1%	24
West Des Moines - UnityPoint Health - Methodist West Hosp	2	3	14	6	4	1%	29
Des Moines - UnityPoint Health - Iowa Lutheran Hosp		2	4	7	2	1%	15
Des Moines - Broadlawns Medical Center		8	14			1%	22
Iowa City - Mercy Iowa City			2	6		0%	8
Cedar Rapids - Mercy Medical Center			2	1		0%	3
Knoxville - Knoxville Hospital & Clinics	1	1	1	1	2	0%	6
Newton - Skiff Medical Center				2	1	0%	3
Other	1	3	4	3	3	1%	14
Total	337	459	469	359	668	100%	2,292

Mahaska County	2014 FY						
Discharges	<18	18-44	45-64	65-74	75+		Total
Oskaloosa - Mahaska Health Partnership	135	216	194	185	487	53%	1,217
Pella - Pella Regional Health Center	76	90	39	21	34	11%	260
Des Moines - Mercy Medical Center-Des Moines	17	40	69	41	42	9%	209
Iowa City - Univ. Of Iowa Hospitals and Clinics	22	52	77	22	26	9%	199
Des Moines - UnityPoint Health - Iowa Meth Med Center	37	22	32	27	32	6%	150
Ottumwa - Ottumwa Regional Health Center	19	26	14	18	30	5%	107
Grinnell - Grinnell Regional Medical Center	2	13	15	7	26	3%	63
West Des Moines - Mercy Medical Center-West Lakes		3	21	14	4	2%	42
West Des Moines - UnityPoint Health - Methodist West Hosp		2	13	8	6	1%	29
Des Moines - UnityPoint Health - Iowa Lutheran Hosp		1	2		1	0%	4
Des Moines - Broadlawns Medical Center		2	1			0%	3
Iowa City - Mercy Iowa City	1	2		2		0%	5
Cedar Rapids - Mercy Medical Center		1	5	1	1	0%	8
Knoxville - Knoxville Hospital & Clinics			1		5	0%	6
Newton - Skiff Medical Center				2	1	0%	3
Other	0	2	2	0	9	1%	13
Total	309	472	485	348	704	100%	2,318

Mahaska County	2015 FY						
Discharges	<18	18-44	45-64	65-74	75+		Total
Oskaloosa - Mahaska Health Partnership	134	216	262	161	489	54%	1,262
Pella - Pella Regional Health Center	95	100	32	21	49	13%	297
Des Moines - Mercy Medical Center-Des Moines	26	37	78	36	51	10%	228
Iowa City - Univ. Of Iowa Hospitals and Clinics	25	57	52	20	22	8%	176
Des Moines - UnityPoint Health - Iowa Meth Med Center	32	14	40	19	40	6%	145
Ottumwa - Ottumwa Regional Health Center	12	24	14	4	16	3%	70
Grinnell - Grinnell Regional Medical Center	3	11	15	3	16	2%	48
West Des Moines - Mercy Medical Center-West Lakes		7	12	9	4	1%	32
West Des Moines - UnityPoint Health - Methodist West Hosp		3	9	11	2	1%	25
Des Moines - UnityPoint Health - Iowa Lutheran Hosp		1	9	2	1	1%	13
Des Moines - Broadlawns Medical Center			2			0%	2
Iowa City - Mercy Iowa City			2		1	0%	3
Cedar Rapids - Mercy Medical Center		1	4	2		0%	7
Knoxville - Knoxville Hospital & Clinics					1	0%	1
Newton - Skiff Medical Center			1			0%	1
Other	0	1	4	2	12	1%	19
Total	327	472	536	290	704	100%	2,329

Mahaska County	2016 FY						
Discharges	<18	18-44	45-64	65-74	75+		Total
Oskaloosa - Mahaska Health Partnership	165	224	165	181	433	51%	1,168
Pella - Pella Regional Health Center	86	102	27	37	24	12%	276
Des Moines - Mercy Medical Center-Des Moines	28	41	103	62	44	12%	278
Iowa City - Univ. Of Iowa Hospitals and Clinics	20	48	57	31	22	8%	178
Des Moines - UnityPoint Health - Iowa Meth Med Center	32	18	33	43	45	7%	171
Ottumwa - Ottumwa Regional Health Center	10	17	18	7	7	3%	59
Grinnell - Grinnell Regional Medical Center	4	24	11	5	2	2%	46
West Des Moines - Mercy Medical Center-West Lakes		3	19	4	2	1%	28
West Des Moines - UnityPoint Health - Methodist West Hosp	1	2	10	7	4	1%	24
Des Moines - UnityPoint Health - Iowa Lutheran Hosp			6	5	2	1%	13
Des Moines - Broadlawns Medical Center			5			0%	5
Iowa City - Mercy Iowa City	1	1	8	1		0%	11
Cedar Rapids - Mercy Medical Center		2			1	0%	3
Knoxville - Knoxville Hospital & Clinics				1	1	0%	2
Newton - Skiff Medical Center	3	3			1	0%	7
Other	1	6	5	3	6	1%	21
Total	351	491	467	387	594	100%	2,290

Town Hall Attendees Notes and Feedback

[VVV Consultants LLC]

Mahaska Health Partnership - PSA 2017 Community Health Needs Assessment Town Hall Stakeholders							
January 18, 2017 - N=47							
IRS Category	Last Name	First Name	Organization	Address	City	ST	Zip
Community leaders.	Allsup	Ginger			Oskaloosa	IA	52577
Press (Paper, TV, Radio).	Allsup	Ken	Oskaloosa News	23 Century MHP	Oskaloosa	IA	52577
Leaders in other not-for-profit health care organizations, such as hospitals, clinics, nursing homes and home-based and community-based services.	Bresnahan	Jacky	Mahaska Health Partnership	1229 C Ave. E	Oskaloosa	IA	52577
Community leaders.	Burnett	Mrs.			Oskaloosa	IA	52577
Political, appointed and elected officials.	Burnett	Steve	City Council	220 S. Market St.	Oskaloosa	IA	52577
Representatives from businesses - owners/CEOs of large businesses (local or large corporations with local branches.)	Campbell	Janel	Interiors by Val	116 1st Ave. E	Oskaloosa	IA	52577
Representatives from businesses - owners/CEOs of large businesses (local or large corporations with local branches.)	Campbell	Wyndell	State Farm	807 A Ave. W.	Oskaloosa	IA	52577
Leaders in other not-for-profit health care organizations, such as hospitals, clinics, nursing homes and home-based and community-based services.	Christensen	Jay	Mahaska Health Partnership	1229 C Ave. E	Oskaloosa	IA	52577
Representatives from businesses - owners/CEOs of large businesses (local or large corporations with local branches.)	Crookham	Joe	Musco Lighting	100 1st Avenue West, P.O. Box 808	Oskaloosa	IA	52577
Representatives from businesses - owners/CEOs of large businesses (local or large corporations with local branches.)	Crookham-Hansen	Linda	Musco Lighting	100 1st Avenue West, P.O. Box 808	Oskaloosa	IA	52577
Community leaders.	Davis	Andy	Mahaska	1407 17th Ave. East, P.O. Box 50	Oskaloosa	IA	52577
Education officials and staff - school superintendents, principals, teachers and school nurses.	Dursky	Mike	Oskaloosa Schools	2416 New Port	Oskaloosa	IA	52577
Leaders in other not-for-profit health care organizations, such as hospitals, clinics, nursing homes and home-based and community-based services.	Faulkes	Stephanie	Mahaska Health Partnership	1229 C Ave. E	Oskaloosa	IA	52577
Leaders in other not-for-profit health care organizations, such as hospitals, clinics, nursing homes and home-based and community-based services.	Ferguson	Sharon	Mahaska Health Partnership	1229 C Ave. E	Oskaloosa	IA	52577
Representatives from businesses - owners/CEOs of large businesses (local or large corporations with local branches.)	Feudner	James	Bank Iowa	1710 3rd Ave. E	Oskaloosa	IA	52577
Representatives from businesses - owners/CEOs of large businesses (local or large corporations with local branches.)	Forseen	Tammy	AHFA	1740 Hilltop Rd.	Mt. Pleasant	IA	52641
Community leaders.	Foster	Kristi	Mahaska Hearing Aid Center	714 A Ave. W.	Oskaloosa	IA	52577
Representatives from businesses - owners/CEOs of large businesses (local or large corporations with local branches.)	Fountain	Kaelee	TD&T	317 High Ave. E	Oskaloosa	IA	52577
Community leaders.	Gipple	Mike			Oskaloosa	IA	52577
Community leaders.	Hansen	Jim			Oskaloosa	IA	52577
Representatives from businesses - owners/CEOs of large businesses (local or large corporations with local branches.)	Herr	Shelly	Musco Lighting	100 1st Avenue West, P.O. Box 808	Oskaloosa	IA	52577
Community leaders.	Hess	Joyce			Oskaloosa	IA	52577
Community leaders.	Holland	Angie			Oskaloosa	IA	52577
Representatives from businesses - owners/CEOs of large businesses (local or large corporations with local branches.)	Houser	Alesia	American Home Finding Association	217 5th St. W	Ottumwa	IA	52501
Community leaders.	Hubble	Robert	Retired		Oskaloosa	IA	52577
Community leaders.	Jansen	Denise			Oskaloosa	IA	52577
Leaders in other not-for-profit health care organizations, such as hospitals, clinics, nursing homes and home-based and community-based services.	Johnson	Travis	Mahaska Health Partnership	1229 C Ave. E	Oskaloosa	IA	52577
Representatives from businesses - owners/CEOs of large businesses (local or large corporations with local branches.)	Jorgenson	Emily	Iowa Wood Preservers	2102 S. 17th St.	Oskaloosa	IA	52577
Representatives from businesses - owners/CEOs of large businesses (local or large corporations with local branches.)	Jorgenson	Jeremy	Iowa Wood Preservers	2102 S. 17th St.	Oskaloosa	IA	52577
Political, appointed and elected officials.	Krutzfeldt	David	Mayor / Interpower	220 S. Market St.	Oskaloosa	IA	52577
Representatives from businesses - owners/CEOs of large businesses (local or large corporations with local branches.)	Ludwick	Bill	Penn Central Model Railroad, Inc.	1305 12th Ave. East	Oskaloosa	IA	52577
Community leaders.	Ludwick	Carol			Oskaloosa	IA	52577
Leaders in other not-for-profit health care organizations, such as hospitals, clinics, nursing homes and home-based and community-based services.	Nutter	Diane	Mahaska Health Partnership	1229 C Ave. E	Oskaloosa	IA	52577
Education officials and staff - school superintendents, principals, teachers and school nurses.	Reiter	Russell	Oskaloosa Community School District	1800 North 3rd Street, P.O. Box 710	Oskaloosa	IA	52577
Leaders in other not-for-profit health care organizations, such as hospitals, clinics, nursing homes and home-based and community-based services.	Riley	Cassie	Mahaska Health Partnership	1229 C Ave. E	Oskaloosa	IA	52577

Mahaska Health Partnership - PSA 2017 Community Health Needs Assessment Town Hall Stakeholders

January 18, 2017 - N=47

IRS Category	Last Name	First Name	Organization	Address	City	ST	Zip
Leaders in other not-for-profit health care organizations, such as hospitals, clinics, nursing homes and home-based and community-based services.	Roose	Kristi	Mahaska Health Partnership	1229 C Ave. E	Oskaloosa	IA	52577
Leaders in other not-for-profit health care organizations, such as hospitals, clinics, nursing homes and home-based and community-based services.	Schultz	Ross	Mahaska Health Partnership	1229 C Ave. E	Oskaloosa	IA	52577
Representatives from businesses - owners/CEOs of large businesses (local or large corporations with local branches.)	Sedrel	Debbie	Merle Norman	119 S. Market	Oskaloosa	IA	52577
The Healthcare System board members.	Smith	Ann	Mahaska Health Partnership	1229 C Ave. E	Oskaloosa	IA	52577
The Healthcare System board members.	Somisetty	Sreedhar	Mahaska Health Partnership	1229 C Ave. E	Oskaloosa	IA	52577
Representatives from businesses - owners/CEOs of large businesses (local or large corporations with local branches.)	Taylor	Rob	Gleason, Taylor & Associates	2403 255th Street	Oskaloosa	IA	52577
Leaders in other not-for-profit health care organizations, such as hospitals, clinics, nursing homes and home-based and community-based services.	VanderVeen	Mike	Oskaloosa Chiropractic Clinic	211 N. J St.	Oskaloosa	IA	52577
Community leaders.	Vos	Dorothy			Oskaloosa	IA	52577
Community leaders.	Vos	Marion			Oskaloosa	IA	52577
Leaders in other not-for-profit health care organizations, such as hospitals, clinics, nursing homes and home-based and community-based services.	Walker	Molly	Oskaloosa Vision Center	303 North 1st St., P.O. Box 47	Oskaloosa	IA	52577
Community leaders.	Wheeler	Don			Oskaloosa	IA	52577
Leaders in other not-for-profit health care organizations, such as hospitals, clinics, nursing homes and home-based and community-based services.	Wheeler	Melinda	Mahaska Health Partnership	1229 C Ave. E	Oskaloosa	IA	52577

Mahaska Health Partnership (Primary Service Area)
Community Health Needs Assessment Town Hall Meeting
01.18.17
N=47

Community Members Present

- Parents
- Those taking care of Seniors
- Elected officials
- Schools
- Those taking care of patients
- Health department
- Home care / hospice

TAB 3: Educational Profile

- Schools really do have that many nurses

TAB 7: Risk Indicators & Factors Profile

- Excessive drinking may have something to do with the college

Impacting Health in our Community

- Adult rec / child care learning center will be done in 2020
- Started fluorinating the water

STRENGTHS

- Walking trail / sports complex
- Mental health provider ratio
- Scope of services offered at MHP
- Chiropractors
- Facility / equipment updates at MHP
- Hospice services
- School nurses
- Happiness with services at MHP
- Crisis intervention program
- Engaged community
- Having OB deliveries at MHP
- A blue zone community
- Relationships with providers
- Have a clinic at William Penn
- Transportation
- Wellness educator on staff at MHP
- Extended walk-in hours
- Ambulance

WEAKNESSES

- Smoking
- First responders
- Providers (Peds, OB, Derm, Card, Endo, ENT)
- Walk-in clinic process
- Mental health (access, diagnosis, placement)
- Sexually transmitted infections
- Access to alternative medicine
- Housing (rental)
- Leaving county for healthcare
- Knowledge of healthcare services (signage)
- Crisis intervention for men
- Obesity (nutrition, fitness)
- Excessive drinking
- Providers accepting Medicaid (dental, etc.)
- Patient advocate
- Access to organic fruits and vegetables
- Access to primary care (wait times)

Community Health Needs Assessment

Mahaska Health Partnership PSA - Strengths (Color Cards) N=47

#	Today: What are the strengths of our community that contribute to health?	#	Today: What are the strengths of our community that contribute to health?
1	School nurses	76	Quality of providers
2	Access to providers	77	Increase in number of hospice providers at a time where rural Iowa sees that as a big challenge
3	Activity bike trails	78	Definite medical base - many services at MHP, EMS, public health, PCP
4	Involved	79	Engaged community members
5	Blue zone project	80	Dedicated care givers
6	Trail system	81	Good providers
7	MHP is active in the community	82	Caring ancillary
8	MHP: proactive community leaders	83	Ambulance
9	Healthcare is outstanding	84	Regional access to quality healthcare
10	Blue zone community	85	New / updated hospital / clinic - MHP
11	Walking trail	86	We do have a community hospital care provider
12	Mental health providers	87	Population stays stable
13	MHP	88	Facilities
14	Chiropractors	89	ER services
15	Hospice	90	Allergy services
16	School immunizations	91	Hospice services
17	MHP updates	92	Wellness education / opportunity
18	Access to places for exercise and movement	93	Number of healthcare providers
19	We have groups but need to spread the word	94	Healthcare facility at MHP
20	Good hospital	95	Updated facility
21	Walking / biking trail	96	State of the art Da Vinci robot
22	Recreation facilities	97	Updated facilities - new wing in hospital
23	Access to healthcare	98	Added additional physicians
24	Wellness coordinator / programs	99	Implemented hospitalist program so family doctors can focus on primary care
25	Local transportation options	100	Walk-in clinic
26	Variety of providers	101	Bike trail
27	Fitness access	102	Blue zone
28	MH providers ratio	103	Adult rec facility
29	Fitness	104	Child care 2020
30	Outpatient	105	Blue zone
31	Grocery	106	Doctors
32	Hospital	107	Bike trail
33	School nurses	108	Blue zone
34	Recreational facilities	109	ER / ambulance
35	Walking trail	110	Walk-in clinic
36	Low crime rate	111	Lacey complex
37	Blue zone community	112	Walking trail
38	MHP growth - new doctors	113	Nutritionist at local grocery store
39	Variety of providers and specialties	114	Hospital
40	Community health efforts - blue zone, memberships, bike trail, events	115	Physicians
41	Wellness education - Ann specifically	116	Optometrist
42	Chiropractors	117	New long-term care
43	Walk-in clinic option	118	People leaving the county for general healthcare
44	Awesome birthing facility	119	Bike trail
45	A school nurse on staff	120	Blue zone

Community Health Needs Assessment

Mahaska Health Partnership PSA - Strengths (Color Cards) N=47

#	Today: What are the strengths of our community that contribute to health?	#	Today: What are the strengths of our community that contribute to health?
46	Transportation - Osky bus / taxi system	121	Robotic surgery
47	Wellness education	122	Building new rec / early childcare facility
48	Walk-in clinic	123	Communication between PCPs and other providers
49	Schools nurses	124	Perception of ODs
50	Have community transport that could be expanded	125	Blue zone
51	Have mental health providers / programming	126	Bike trail
52	School nurses	127	Extended walk-in hours
53	Quantity of community providers	128	Surgical updates
54	Blue zone	129	All healthcare resources are in one place (and a lot of things)
55	Younger generations becoming more involved	130	Behavioral health is a great asset to the community we serve
56	Dr. Fowler and Dr. O'Brien	131	Effort of community wellness efforts
57	Housing	132	Partnerships of groups working together
58	Chiropractors	133	Good law enforcement open to helping mental illness
59	Transportation	134	Walking trail
60	College health clinic	135	Lots of community events and activities
61	Ambulance	136	Nutrition and wellness education
62	Schools nurses	137	Schools nurses
63	Walking / biking trail	138	Community events
64	Walk-in clinic	139	Chiropractors
65	Chiropractors	140	Community health efforts - blue zone, bike trail, rec facility
66	Hospice services	141	Facilities - health, recreation
67	Quantity of providers	142	Providers - variety and number
68	Availability of mental health	143	Strong non-profit community / organization
69	Focus on wellness - recent blue zone program	144	Higher ratio of health professionals
70	Mahaska wellness coalition	145	Health and recreation facilities
71	Walking trail / sports complex	146	Childhood education / adult rec center built in 202
72	Behavior health department	147	MHP does okay on surveys of services
73	Crisis intervention program	148	Hospice services
74	College clinic	149	Availability of related providers (Iowa City, DSM)
75	Facilities	150	Rang of providers

Community Health Needs Assessment

Mahaska Health Partnership PSA - Weakness (Color Cards) N=47

#	Today: What are the weaknesses of our community that contribute to health?	#	Today: What are the weaknesses of our community that contribute to health?
1	Change perception of local healthcare - many go to Pella	97	Smoking
2	Sherriff's department needs more personnel for first response	98	Poor bedside manner
3	Smoking and pregnant smokers - we had higher CV disease and cancer death rates	99	Drugs
4	Perception of chiropractors and what we do - U.S. addicted to pain meds	100	Mental health
5	Pediatric doctors	101	Specialized providers
6	YMCA is due for new facility	102	Smoking during pregnancy
7	Thankful for bus service	103	Going elsewhere for services
8	Adult rec / child care	104	Doctors providing individual care and caring
9	Mothers smoking	105	Teenage - drinking, smoking, sex
10	Mental health	106	Poverty - insurance access, poor housing
11	Physical health	107	Mental health
12	Housing problems / issues	108	Obesity
13	Ability to see your PCP - too long, people driving to Pella	109	Insurance
14	Systems at hospital - billing not working, how able to get appointments	110	Consistency with walk-in clinic - searching for meds only
15	Mental health services	111	Enforcement of smoking / non-smoking laws
16	Access to physicians	112	Patient education of what specialty to see
17	Patient advocates	113	Services for men - CIS
18	Waiting areas	114	Mental health - Alzheimer's doctors
19	Walk-in clinic services	115	Emergency room
20	High percent of smokers - general population and prenatal	116	More nursing home - mental patients
21	Rental housing may be impacting general health	117	Smoking / tobacco use
22	More sponsoring organizations	118	STDs
23	Mental health - discipline vs. mental health in schools	119	Perception of our services
24	Scheduling caregivers - tight scheduling	120	OB / pediatrician / dermatologist / mental health providers
25	Obesity - fitness and correct diet	121	Access to PCP
26	Wait times - urgent care	122	Smoking
27	Smoking	123	Obesity
28	Housing	124	STDs
29	Getting into caregivers	125	Family planning services
30	Mental health access	126	MH crisis intervention team - access, process
31	Recreation	127	Emergency response to rural areas of the county
32	Community	128	STDs
33	Health insurance	129	Family planning
34	Costs of care vs reimbursement	130	Poverty and relationship to housing
35	Healthcare services in community / neighborhood - more	131	Obesity
36	Activities that are open to all ages as well as activities that are narrowed down to one age group - healthy but fun	132	People leaving town for care
37	More sponsorship for healthy activities to promote positive care, etc.	133	Access to appointments

Community Health Needs Assessment

Mahaska Health Partnership PSA - Weakness (Color Cards) N=47

#	Today: What are the weaknesses of our community that contribute to health?	#	Today: What are the weaknesses of our community that contribute to health?
38	More informational groups over public health, as well as mental health - mostly based on educating community	134	Access to quality nutrition
39	Increase media use to get higher growth in healthcare activities (i.e. meet up app)	135	Access to PCP
40	Being able to make an appointment to see a doctor	136	STDs
41	Diabetes	137	Access to mental health providers
42	Mental health	138	Education of smoking when pregnant
43	Cancer	139	Education on STD prevention
44	Obesity	140	Education on excessive drinking
45	Access	141	Health insurance is too high
46	Wait times - 1 day	142	The need for female OB
47	Access to urgent care / walk-in	143	Pediatrics simply in lieu of family practice
48	Access to primary doctor - 1 week	144	Sexual health education
49	Smoking	145	Smoking / alcohol education
50	Poverty	146	Lengthy appointment time - behind 40 minutes
51	STDs	147	Overall perception - education on services, so many services not known
52	Mental health	148	Mental health
53	Drugs / alcohol abuse	149	Childcare facility - 27% in single parent households
54	Food insecurity / access - aged population	150	Smoking / smoking during pregnancy
55	Obesity	151	Health insurance cost too high
56	Dental - uninsured	152	Mental health
57	Mothers smoking	153	Drinking / unintentional injuries
58	School health	154	Pediatrician
59	Sexually transmitted diseases - STDs	155	Low income / housing
60	OB provider	156	Childcare facility - 27% in single parent households
61	Public perception of school nurses	157	More stop smoking education
62	Dentists who accept Hawk I + XIX	158	Rental property is poor - inspection
63	Pregnant when smoking	159	Behavioral health
64	Resources for depression / mental illness	160	Public education
65	Mental health - access	161	Obesity
66	Provider specialist (OB, Pediatrics) and provider access	162	Smoking
67	Access to dentist - insurance	163	Diabetes
68	Poverty	164	Mental health
69	Pediatric OB care	165	Smoking
70	School dental	166	Obesity
71	Dental providers take TXIX - treat underinsured	167	Pediatrics / OB / Derm / Edno / Cardiology
72	Strengthen CH-MH education	168	Family planning
73	Housing - poor	169	Overuse of walk-in clinic
74	8.7% not positive perception of DDS / school nurses	170	ER wait times
75	Smoking	171	Need more education to public about self-responsibility
76	Drugs / alcohol abuse	172	Poor housing - increased infestations
77	Sexually transmitted diseases	173	ER waiting room too small
78	Female provider that delivers	174	Accessibility

Public Notice and Invitation

[VVV Consultants LLC]

MHP to Host Community Health Needs Assessment



Mahaska Health Partnership

Oskaloosa News 1/4/17

Town Hall on Wednesday, Jan. 18

In order to gauge the overall health needs of Mahaska County residents, Mahaska Health Partnership invites the public to participate in a Community Health Needs Assessment (CHNA) Town Hall roundtable. The roundtable is set for Wednesday, Jan. 18 from 5:30-7:00 pm at the Musco Technology Center on the William Penn Campus.

The goal of this assessment update is to understand MHP's progress in addressing community health needs cited in the previous CHNA report and to collect up-to-date community health perceptions and needs.

"This Town Hall meeting will be an opportunity to review our previous CHNA, share your experiences and make suggestions to improve healthcare delivery within our county," MHP CEO Jay Christensen said. "We encourage your attendance, as your input is very valuable to build a healthy community."

A light dinner will be served. Vince Vandelaar, Principal Consultant at VVV Consultants LLC (Olathe, Kansas) will facilitate this meeting.

To RSVP to the Town Hall, please call (641) 672.3439 or visit our website at mahaskahealth.org for a link.



January 3, 2017

From: Jay Christensen, CEO Mahaska Health Partnership

To: Community Leaders, Providers, Hospital Board and Staff

Subject: Hold the Date - Community Health Needs Assessment Town Hall,
Wednesday, Jan. 18 at the Musco Technology Center on the William
Penn Campus

Mahaska Health Partnership is partnering with other community health providers to update our Community Health Needs Assessment. The goal of this assessment update is to understand progress in addressing community health needs cited in the last CHNA report and to collect up-to-date community health perceptions.

You are invited to **attend the CHNA Round #2 Town Hall Meeting** from 5:30-7:00 pm at the Musco Technology Center on the William Penn Campus **Wednesday, Jan. 18**. A light dinner will be provided starting at 5:00 pm that day.

We hope you can participate in this very important Town Hall.

Email signature

Jay Christensen, CEO

Release

1229 C Avenue East
Oskaloosa, Iowa 52577
Phone: 641.672.3439
Fax: 641.672.3336

Contact: Ross Shultz
Business Development Director

MHP to Host Community Health Needs Assessment Town Hall on Wednesday, Jan. 18

In order to gauge the overall health needs of Mahaska County residents, Mahaska Health Partnership invites the public to participate in a Community Health Needs Assessment (CHNA) Town Hall roundtable. The roundtable is set for Wednesday, Jan. 18 from 5:30-7:00 pm at the Musco Technology Center on the William Penn Campus.

The goal of this assessment update is to understand MHP's progress in addressing community health needs cited in the previous CHNA report and to collect up-to-date community health perceptions and needs.

"This Town Hall meeting will be an opportunity to review our previous CHNA, share your experiences and make suggestions to improve healthcare delivery within our county," MHP CEO Jay Christensen said. "We encourage your attendance, as your input is very valuable to build a healthy community."

A light dinner will be served. Vince Vandelaar, Principal Consultant at VVV Consultants LLC (Olathe, Kansas) will facilitate this meeting.

To RSVP to the Town Hall, please call [\(641\) 672.3439](tel:6416723439) or use the following link: https://www.surveymonkey.com/r/MHP_RSVP.

From: Jay Christensen, CEO Mahaska Health Partnership

Date: January 3, 2017

To: Community Leaders, Providers, Hospital Board and Staff

Subject: Hold the Date - Community Health Needs Assessment Town Hall, Wednesday, January 18 at the Musco Technology Center on the William Penn Campus

Mahaska Health Partnership is partnering with other community health providers to update our Community Health Needs Assessment. The goal of this assessment update is to understand progress in addressing community health needs cited in the last CHNA report and to collect up-to-date community health perceptions.

You are invited to **attend the CHNA Round #2 Town Hall** from 5:30-7pm at the Musco Technology Center on the William Penn Campus on **Wednesday, January 18**. A light dinner will be provided starting at 5pm that day.

We hope you can participate in this very important Town Hall.

Jay Christensen
CEO

Join Us for a Town Hall Meeting Jan. 18

Mahaska Health Partnership will be hosting a Community Health Needs Assessment Town Hall Meeting on **Wednesday, Jan. 18**. The meeting will be held from 5:30 - 7:00 pm at the Musco Technology Center on the William Penn Campus.

The public is invited to attend. A light dinner will be provided, starting at 5:00 pm. Join us for this opportunity to share your opinions and suggestions to improve healthcare delivery in our community.

Please RSVP by Friday, Jan. 13 at **641.672.3439** or visit mahaskahealth.org for more information.



Making Healthcare Personal

Health needs town hall reveals strengths, weaknesses

By ANGIE HOLLAND Herald Staff Writer 13 hrs ago



Angie Holland/The Herald

OSKALOOSA — Forty-eight people attended the Community Needs Assessment Town Hall meeting on Wednesday, Jan. 18.

Tables and chairs were set up at Willam Penn University's Musco Technology Center, prepared for a light dinner. Attendees were urged to gather together and fill up the tables.

Mahaska Health Partnership (MHP) Chief Executive Officer Jay Christensen initiated the evening's discussion.

"Our goal tonight is we've had surveys sent back from our community health needs assessment. Vince Vandehaar who is here to go through the results of that survey, so a piece of tonight will be looking at the results from that survey and working in small tables, talking about how do we prioritize as a community and what kinds of things we want to work on," he said. "And then that will go back to our board of trustees then, and we'll say 'what part of these are the hospital's, what do we want to put in our strategic partner, who should we partner with to make some of those things happen."

Again, I don't know if you'll find any great big surprises in the data," Christensen added. "I think you'll probably see a lot of things you'll expect to see, but at the same time, I think we had 248 responses, which is pretty good data for a community our size."

Vandehaar, who is with VVV Consultants LLC from Olathe, Kansas, said his duty was to facilitate the conversation.

"This is your town hall," he said. "This is your data."

According to Vandehaar, a community health needs assessment is a systematic collection, assembly, analysis and dissemination of information about the health of the community. Some is published, some is gathered.

"So we're assembling tonight, we have a little analysis that we're going to put up, but it's more important that you think about it," he said. "I'm just starting the conversation. I'm stirring the pot with some color codes and if you don't like it then you talk about it and write it down."

Vandehaar presented slides revealing some demographic data and results of the community health needs assessment. Following the presentation, he had attendees jot down things they were concerned about as well as thoughts regarding the community's health-related strengths.

"We're going to be making a list of what you think we need to brag about to our governor and other state folks," he said. "Things that are going really well with our health in our area."

According to those present, health-related strengths in the community include the walking trail and sports complex, the scope of services at MHP, chiropractors, MHP campus updates and equipment, hospice services, school nurses, satisfaction with services, Crisis Intervention Services, an engaged community, the birthing facility, Blue Zones community, relationships with providers, the clinic at William Penn University, transportation, having a Community Wellness Educator at MHP, extended hours at the MHP walk-in clinic, and the ambulances in town.

The group felt the following changes and improvements are important to the community: Smoking, first response to rural areas, having specialties such as pediatrics, obstetrics, dermatology, cardiology and endocrinology; the process at the walk-in clinic; mental health (diagnosis, placement, aftercare), sexually transmitted infections, access to alternative medicine, housing (with a focus on rental), leaving the county for care, the inventory of services, crisis intervention for men, obesity (eating right and fitness), excessive drinking, Medicaid providers, patient advocacy, access to organic foods, access to primary care.

The items were listed on posters and attendees had four stickers with which to vote on the items of change that were most important to them.

"We're going to see what bubbles to the top as our town hall," said Vandevier. "And that's going to be our top issues to work on when we work on our plan."

Attendees felt the top five most important items of change or improvement were obesity, with 21 votes; housing, with 20 votes; smoking, with 19 votes; mental health, with 16 votes and sexually transmitted infections, with 14 votes.

— Herald staff writer Angie Holland can be reached at aholland@oskyherald.com and followed on Twitter @OskeyAngie.

Detail Primary Research Primary Service Area

[VVV Consultants LLC]

Community Health Needs Assessment

Community Feedback

Methodology

A community feedback survey was created on behalf of the CHNA client to gather primary service area stakeholder feedback on health perceptions and progress in addressing previous CHNA community needs. All community residents were encouraged to take the survey online by entering the following address into their personal browser:
https://www.surveymonkey.com/r/CHNA17_MHP.

In addition, an invite letter was sent to all primary service area stakeholders (i.e. Schools, County, City, Clergy, Public Health Leaders).

Below is a summary of public response:

Mahaska Health Partnership (PSA) - Oskaloosa, IA N=247		
10. For reporting purposes, are you involved in or are you a ...?	Option C Stakeholders Bottom 2 Boxes	MHP PSA N=247
Board Member	4.3%	2.7%
Business / Merchant	6.3%	7.8%
Case Manager / Discharge	0.7%	0.7%
Charitable Foundation	5.3%	5.1%
Civic Club / Chamber	2.7%	3.7%
Clergy / Congregational Leader	1.4%	1.0%
College / University	2.5%	1.7%
Consumer Advocate	1.3%	1.7%
Consumers of Health Care	9.3%	13.9%
Dentist	0.3%	0.0%
Economic Development	1.5%	1.4%
Education Official / Teacher	5.2%	3.0%
Elected Official (City / County)	1.5%	0.3%
EMS / Emergency	1.4%	1.0%
Farmer / Rancher	4.0%	2.0%
Health Department	1.7%	0.7%
Hospital	12.1%	7.1%
Housing / Builder	0.4%	0.3%
Insurance	1.2%	2.0%
Labor	1.2%	2.7%
Law Enforcement	0.6%	0.3%
Low Income / Free Clinics	0.8%	1.0%
Media (Paper, TV, Radio)	0.7%	2.0%
Mental Health	3.7%	9.1%
Nursing	8.2%	6.8%
Other Health Professional	9.9%	13.9%
Parent / Caregiver	0.5%	0.7%
Pharmacy	1.0%	1.7%
Physician (MD / DO)	1.4%	0.3%
Physician Clinic	1.4%	1.4%
Senior Care / Nursing Home	1.2%	0.7%
Social Worker	1.9%	1.7%
Veteran	0.9%	1.0%
Welfare / Social Service	3.5%	0.7%
Other (please specify)	7.2%	5.4%
TOTAL	100.0%	100.0%

KEY - CHNA Open End Comments			
CODE	Physician Specialty		CODE Physician Specialty
ALLER	Allergy/Immunology		ONC Oncology/Radiation Oncology
AES	Anesthesia/Pain		OPHTH Ophthalmology
CARD	Cardiology		ORTH Orthopedics
DERM	Dermatology		ENT Otolaryngology (ENT)
EMER	Emergency		PATA Pathology
ENDO	Endocrinology		PEDS Pediatrics
FP	Family Practice (General)		PHY Physical Medicine/Rehabilitation
GAS	Gastroenterology		PLAS Plastic/Reconstructive
SUR	General Surgery		PSY Psychiatry
GER	Gerontology		PUL Pulmonary
HEM	Hematology		RAD Radiology
IFD	Infectious Diseases		RHE Rheumatology
IM	Internal Medicine		VAST Thoracic/Cardiovascular/Vascular
NEO	Neonatal/Perinatal		URL Urology
NEP	Nephrology		MDLV Mid-Level
NEU	Neurology		SURG Surgery
NEUS	Neurosurgery		TEL Telemedicine
OBG	Obstetrics/Gynecology (Delivery)		

KEY - CHNA Open End Comments			
Code	Healthcare Themes		Code Healthcare Themes
VIO	Abuse/Violence		NURSE More Nurse Availability
ACC	Access to Care		NEG Neglect
AGE	Aging (Senior Care/Assistance)		NH Nursing Home
AIR	Air Quality		NUTR Nutrition
ALC	Alcohol		OBES Obesity
ALT	Alternative Medicine		ORAL Oral Surgery
ALZ	Alzheimer's		ORTHOD Orthodontist
AMB	Ambulance Service		OTHR Other
ASLV	Assisted Living		OP Outpatient Services/Surgeries
AUD	Auditory		OZON Ozone
BACK	Back/Spine		PAIN Pain Management
BD	Blood Drive		PARK Parking
BRST	Breastfeeding		PHAR Pharmacy
CANC	Cancer		DOCS Physicians
CHEM	Chemotherapy		FLU Pneumonia / Flu
KID	Child Care		FOOT Podiatrist
CHIR	Chiropractor		POD Podiatrist
CHRON	Chronic Diseases		POV Poverty
CLIN	Clinics (Walk-In, etc.)		PNEO Prenatal
COMM	Communication		PREV Preventative Healthcare

KEY - CHNA Open End Comments

Code	Healthcare Themes		Code	Healthcare Themes
CORP	Community Lead Healthcare		PRIM	Primary Care:
CONF	Confidentiality		PROS	Prostate
DENT	Dentists		DOH	Public Health Department
DIAB	Diabetes		QUAL	Quality of care
DIAL	Dialysis		REC	Recreation
DUP	Duplication of Services		RESP	Respiratory Disease
ECON	Economic Development		NO	Response "No Changes," etc.
EMER	Emergency Room		SANI	Sanitary Facilities
EMS	EMS		SNUR	School Nurse
EYE	Eye Doctor/Optomestrist		STD	Sexually Transmitted Diseases
FAC	Facility		SMOK	Smoking
FAM	Family Planning Services		SS	Social Services
FEM	Female (OBG)		SPEC	Specialist Physician care
FINA	Financial Aid		SPEE	Speech Therapy
FIT	Fitness/Exercise		STRK	Stroke
ALL	General Healthcare Improvement		DRUG	Substance Abuse (Drugs/Rx)
GEN	General Practice		SUIC	Suicide
GOV	Government		TPRG	Teen Pregnancy
HRT	Heart Care		THY	Thyroid
HIV	HIV/AIDS		TOB	Tobacco Use
HH	Home Health		TRAN	Transportation
HSP	Hospice		TRAU	Trauma
HOSP	Hospital		TRAV	Travel
MAN	Hospital Management		ALCU	Underage Drinking
INFD	Infidelity		INSU	Uninsured/Underinsured
IP	Inpatient Services		URG	Urgent Care/After Hours Clinic
LEAD	Lead Exposure		VACC	Vaccinations
BIRT	Low Birth Weight		VETS	Veteran Care
LOY	Loyalty		WAG	Wages
MAMO	Mammogram		WAIT	Wait Times
MRKT	Marketing		H2O	Water Quality
STFF	Medical Staff		WELL	Wellness Education/Health Fair
BH	Mental Health Services		WIC	WIC Program

CHNA Community Feedback 2017

Mahaska Health Partnership (Primary Service Area) N=247

ID	Zip	Overall HC Rating	c1	c2	c3	Are there healthcare services in the Mahaska Health Partnership Primary Service Area that you feel need to be improved and/or changed? (Please be specific.)
1166	50171	Good	ACC	BH	WAIT	Access to mental health counseling. Takes to long to get in for appointments
1051	52577	Very Poor	ACC	DOCS	PELLA	No doctors taking patients. Had to take my whole family to Pella because 2 of our family doctors left.
1025	52577	Good	ACC	PRIM	CLIN	More access to PCP. Windows of appointments seem to be narrow. Difficult to get late appointments except for walk-in.
1087	52577	Very Good	ACC	WAIT	DOCS	It needs to be easier to get an appointment with your doctor. You call today and can't get in until January.
1055	52577	Poor	ACC	WAIT	PRIM	It's very hard to get an appointment with my main physician. Seeing the on call Dr is almost pointless because they rarely are willing to run tests, blood tests, x-rays etc. and refer you to your primary provider. I have gone months with an issue waiting for my primary physician.
1016	50207	Fair	ACC	WAIT		Ability to schedule appointments.
1129	52577	Good	ACC			Improved access to care.
1001	52567	Good	ALZ	BH	OPT	The age changed so people with early on set Alzheimer's can be seen at vision quest. You need better early morning care doctors so you don't get a bandage fix and have to go back to regular doctor! Not all patients are drug seekers and they need to understand that. Emergency rooms need to change the sheets after people leave, finding burgers on sheets is not very comforting
1153	52577	Very Good	BH	ALL		My sense is we need more mental health professionals and we need an additional allergist. Melissa is great but she can only handle a finite number of patients.
1131	52577	Fair	BH	DOCS	WAIT	behavioral/mental health- need more providers and nurses. Long wait times for appointments. Sometimes this isn't feasible.
1089	52577	Good	BH	HOME	SUBST	Mental Health, Homelessness and addiction
1071	52577	Poor	BH	RX	WAIT	Behavioral health is overworked so it means long delays for patients who sometimes go without medication because they can't get an appointment Primary care - if a doctor goes on vacation, there should be another prescriber covering to authorize refills without the patient having to call
1019	50207	Very Good	BH			It seems that Mental Health care is a challenge state-wide. Thankfully I have not needed this service, and is my only area of concern.
1052	52577	Fair	BH			Mental Health Services
1015	50207	Good	BH			Mental Health, but that needs addressed statewide.
1060	52577	Very Good	BH			Re-modeling the behavioral health unit
1062	52577	Fair	BILL			The Billing department
1124	52577	Fair	BILL			The billing department needs revamped. Many sour faces and attitudes while utilizing the hospital.
1003	50268	Good	CARD	DOCS		Cardiovascular doctor.
1167	52211	Very Good	CLIN			Expanded services and procedures at walk-in clinic

CHNA Community Feedback 2017

Mahaska Health Partnership (Primary Service Area) N=247

ID	Zip	Overall HC Rating	c1	c2	c3	Are there healthcare services in the Mahaska Health Partnership Primary Service Area that you feel need to be improved and/or changed? (Please be specific.)
1093	52577	Fair	CLIN	COMM	STAFF	Walk in clinic. My husband and I both have been treated 1 time and we both feel treatment was unprofessional and poor. He had stitches in his wrist which came out less than 36 hours after being stitched and his wrist is swollen and tender still. He was treated in July! I was seen early Nov. and told I could've been given an antibiotic that day but the policy is that if I was still sick in 3 or 4 days, come back and they would give me antibiotics. I was told her political views(I was seen on Nov. 10) and she told me about a patient she sees every month for a particular issue, detailed the patients' lifestyle and told me about some of the rotten parents who bring their kids in to see her. I am still fighting bronchitis or walking pneumonia, who knows, but I'm not going back to the walk in clinic ever. Very Unprofessional Care .
1130	52577	Good	CLIN	EQUIP		I think that there needs to be a separate specialty clinic within the organization so that visiting providers have a pod like set up similar to that of the clinic and have their set rooms and supplies that they need. In smaller facilities I have seen this work very efficiently. It would also open up meeting rooms such as CBLC. I think another service that would be needed in the community is a dialysis center.
1150	52577	Good	CLIN	PELLA	URG	I am very happy with the addition of the walk in clinic to our community, although have heard of quite a few people going to Pella for their urgent care for situations our walk in will not see, but are not emergency.
1152	52577	Good	CLIN	RX		no -I've used the walk-in clinic; fast, competent service and I've been in the clinic to renew prescriptions.
1117	52577	Fair	CLIN	WAIT		The clinic is hard to get into and service is lacking
1078	52577	Very Good	CLIN			Not really... walk in clinic is very beneficial
1128	52577	Fair	CLIN			Walk in clinic needs to be more flexible with patients.
1101	52577	Good	COMM	BILL		Yes. When you have to go back a week later after your appointment due to the wrong diagnosis. Billing is very messed up.
1105	52577	Very Poor	COMM	DOCS		you have some of the rudest Drs that I have ever encountered
1084	52577	Good	COMM			consistency/ keeping patients informed. treating the patient as though they care. not just a number not brushing the patient off but truly listen to them
1082	52577	Very Good	COST	EMER		Less expensive emergency care
1040	52577	Good	DENT	INSUR		dentist accepting Medicaid
1126	52577	Good	DERM	BAR		Dermatology and weight management
1140	52577	Good	DERM	CARD	SPEC	Dermatologist would be good , also heart specialist in house.
1067	52577	Good	DERM	SPEC		Dermatology specialists
1075	52577	Good	DERM			Dermatology
1059	52577	Very Good	DERM			Dermatology
1123	52577	Very Good	DERM			Dermatology
1103	52577	Good	DERM			Please add a dermatologist!!
1080	52577	Very Good	DERM			Would like to see a dermatologist (at least visit once or twice a month).
1079	52577	Very Good	DIAL	OTTUM	PELLA	Adding dialysis so posted don't have to travel to Ottumwa, Pella, or Newton

CHNA Community Feedback 2017

Mahaska Health Partnership (Primary Service Area) N=247

ID	Zip	Overall HC Rating	c1	c2	c3	Are there healthcare services in the Mahaska Health Partnership Primary Service Area that you feel need to be improved and/or changed? (Please be specific.)
1021	52543	Fair	DOCS	CLIN	WAIT	increase number of physicians in the clinic to see patients. Even with walk-in clinic we can't get into see our doctor the same day when an illness arises thus have used the walk in clinic and appreciate the service very much so. Need for delivering physicians and female doctors. Better communication between the admitting gals at door 4 and physicians, not all do processes the same. Need more providers in Behavioral Health and an additional emergency intake person to work with Marcy DeWitt.
1073	52577	Good	DOCS	CLIN		We miss having a dr on call during the day as Family Medical Center had. Adding the walk-in clinic has helped, but we have had things come up that they can't handle. It is days before you can get an appointment with a dr. so you end up in the emergency room when you really don't need to.
1031	52577	Fair	DOCS	COMM		The doctors need to listen to the patients with what they tell them about their body we know our body better be Han they do and I think the emergency has a lot of. Room for improvement
1029	52577	Fair	DOCS	NP	CLIN	More Physicians as opposed to Nurse Practitioners. The walk-in clinic does not seem to know what they are doing. They say they do not treat things that should be treated.
1091	52577	Good	DOCS	NP		More doctors as providers and fewer nurse practitioners.
1134	52577	Good	DOCS	NP		More physicians and less NP's

CHNA Community Feedback 2017

Mahaska Health Partnership (Primary Service Area) N=247

ID	Zip	Overall HC Rating	c1	c2	c3	Throughout the past two years, did you or someone you know receive healthcare services outside of the Mahaska Health Partnership Primary Service Area?
1060	52577	Very Good	BH	CLIN	ALL	Behavioral health, walk in clinic, allergist
1096	52577	Fair	BH	IP		Mental Health inpatient and ongoing services.
1131	52577	Fair	BH	NEUR	RAD	mental health, neurological services, mri,
1158	52577	Very Good	BH			behavioral assessment
1167	52211	Very Good	BH			Mental Health
1116	52577	Poor	BLANK	PEDS		Blank Children's hospital
1032	52577	Fair	CANC	CHEM		Chemo treatments
1166	50171	Good	CARD	DERM		Heart surgery, dermatologist
1154	52577	Good	CARD	DESM		Heart Dr Lemon Des Moines
1006	50207	Fair	CARD	ENDO	CANC	Cardiology, Endocrinology, Breast center
1007	50207	Good	CARD	OPT		Cardiologist, Optometrist
1097	52577	Good	CARD	ORTHO		Heart, biopsy, back
1171	52553	Poor	CARD	POD	ENT	Cardiology, foot and ankle, ear
1089	52577	Good	CARD	PRIM		Heart, Vein, Primary Care
1077	52577	Fair	CARD			Cardio
1035	52577	Good	CARD			Cardiology
1029	52577	Fair	CLIN	PELLA	OTTUM	Clinic at Pella Regional and Ottumwa Regional because I could not get into an appointment in a timely manner and because the receptionist in the Medical Clinic at MHP asked me "what my problem was that I wanted to see an Obstetrician. First of all that is not her business and second, I should be able to see an OB physician regardless, if I request it. So, I went to Dr. Alons in Ottumwa and will return there because of such a fantastic experience.
1121	52577	Good	COLON	DENT		Colonoscopy, Dental extractions
1049	52577	Good	COLON			colonoscopy
1103	52577	Good	COLON			Colonoscopy
1045	52577	Very Good	DENT	BH		Dental and mental health
1063	52577	Fair	DENT	PEDS		dental, pediatrics
1152	52577	Good	DERM	DESM		my spouse went to a dermatologist in Des Moines
1080	52577	Very Good	DERM	NEUR	CARD	Dermatology, neurology, cardiology
1067	52577	Good	DERM			dermatology
1064	52577	Good	DIAL	CARD	SURG	Dialysis, Heart surgeon
1079	52577	Very Good	DIAL	ORTHO	OBG	Dialysis, ortho services, OB
1119	52577	Fair	DIAL			Hemo Dialysis and Peritoneal Dialysis training
1042	52577	Very Good	DOCS	EMER		Md, ER
1091	52577	Good	DOCS	FEM	HOLIST	Female physicians, holistic choices
1130	52577	Good	EMER	CLINC	SURG	ER, clinic, surgery, inpatient services, ortho
1162	50150	Good	EMER	DOCS	ALBIA	Patient couldn't afford to go to the ER. Tried to get in to see a Doctor. But they said they couldn't see him until late December. Gentleman was coughing to the point he would pass out several times. But clinic said they couldn't get him in. Had gone to see 3 PA and never got any better. Finally had to go to Albia for treatment with a Doctor not a PA. I keep telling him how I thought Mahaska health partnership was awesome. Then this happening made me feel like I lied to him.
1114	52577	Fair	EMER	PELLA		Chose to use ER in Pella rather than Osky
1057	52577	Fair	EMER	PELLA		Emergency at Pella Hospital

CHNA Community Feedback 2017

Mahaska Health Partnership (Primary Service Area) N=247

ID	Zip	Overall HC Rating	c1	c2	c3	Throughout the past two years, did you or someone you know receive healthcare services outside of the Mahaska Health Partnership Primary Service Area?
1026	52577	Fair	EMER	UROL	OBG	Emergency Services, Urologists, Gynecology
1010	50207	Fair	EMER			Emergency room
1001	52567	Good	EMER			Emergency room
1044	52577	Very Poor	EMER			Er
1165	53501	Very Good	EMER			Er
1088	52577	Fair	EMER			ER visits when our ER failed to help.
1017	50207	Fair	ENDO	CARD		Endocrinology, Cardiology
1140	52577	Good	ENDO			Endocrinologist
1003	50268	Good	ENT	OPT		ENT, Vision
1073	52577	Good	FP	DOCS	SPEC	family MD and specialists
1139	52577	Good	GASTR	ALL	SURG	Internist services and sinus surgery
1156	52577	Good	GASTR	DESM	COLON	Dr. Breon referred my husband to a gastroenterology specialist at a clinic in Des Moines for his colitis.
1133	52577	Very Good	GASTR			Gastroenterologist
1172	52553	Fair	GEN	SURG	SPEC	All-general office to surgical & specialty
1002	50268	Fair	GEN			Almost everything until recently
1106	52577	Very Poor	GEN			Anything medical!
1038	52577	Good	HORM			Hormone treatment
1061	52577	Fair	MERCY			Mercy hospital
1025	52577	Good	NEUR	OBG	DERM	Neurology, OB, dermatology, PCP
1086	52577	Good	OBG	DENT	RHEU	Gyno, dentist, rheumatology, mammo
1068	52577	Fair	OBG	FEM		female gyn
1093	52577	Fair	OBG	PRIM	FIBR	Birthing, physical, fibromyalgia
1021	52543	Fair	OBG	URG	EMER	OB services, urgent care to prevent ER copay (prior to walk-in clinic), dental services at River Hills in Ottumwa, VQ scans in Ottumwa, ortho services in Des Moines, endocrinologist in and Iowa City (could MHP have one as a visiting specialist?)
1124	52577	Fair	OBG			Child birth
1170	52553	Poor	OBG			child delivery
1078	52577	Very Good	OBG			Obstetrics
1148	52577	Good	OBG			obstetrics
1108	52577	Fair	ONC			Oncology
1058	52577	Good	OPH			Ophthalmology
1005	52585	Good	OPT	URG		Optometry Care, Urgent care at another facility
1123	52577	Very Good	ORTHO	CARD		Orthopedics - total knee, total hip; cardiology services
1153	52577	Very Good	ORTHO	DESM	CARD	hand specialist in Des Moines, and cardiologists
1022	52543	Good	ORTHO	SPEC		ortho specialty after referral from MHP ortho
1138	52577	Good	ORTHO	SURG	CARD	orthopedic surgeon, cardiac
1027	52577	Good	ORTHO	SURG	OPH	Back Surgery, Ophthalmology services
1019	50207	Very Good	ORTHO	SURG		Back Surgery
1155	52577	Fair	ORTHO	SURG		knee surgery
1151	52577	Good	ORTHO			Ortho
1101	52577	Good	ORTHO			Orthopedic
1126	52577	Good	ORTHO			Orthopedic care
1075	52577	Good	ORTHO			Orthopedic consultation

CHNA Community Feedback 2017

Mahaska Health Partnership (Primary Service Area) N=247

ID	Zip	Overall HC Rating	c1	c2	c3	Throughout the past two years, did you or someone you know receive healthcare services outside of the Mahaska Health Partnership Primary Service Area?
1018	50207	Very Good	ORTHO			orthopedics
1072	52577	Good	ORTHO			Orthopedics
1098	52577	Good	PEDS	OBG	ANKEN	Pediatrician and OB care in Ankeny
1028	52577	Good	PEDS	SURG		Pediatric surgery
1135	52577	Good	PEDS			A local trained physician in pediatrics that did not work for MHP.
1062	52577	Fair	PEDS			Kids, Need more Peds office and FIX BILLING
1144	52577	Fair	PELLA	ACC		Son, went to Pella Regional Health Center-couldn't get in at MHP
1070	52577	Fair	PELLA	PRIM		moved to Pella because they are able to get into see primary care doctor when they are sick, instead of seeing someone different every time they come to the doctor.
1161	50256	Very Good	PELLA	URG		Pella urgent care
1117	52577	Fair	PELLA			I go to Pella
1008	50207	Good	PRIM	BH	SURG	Primary care, mental health care, surgery, emergency, inpatient care
1134	52577	Good	PRIM	DENT	BH	Primary Care Physician, Dental, Mental Health
1051	52577	Very Poor	PRIM	DOCS	SURG	Physicals, doctor visits, surgery, etc. No doctors to provide services in Osky.
1111	52577	Very Poor	PRIM	EMER	HOSP	Primary care, emergency room, hospice care, surgery, specialists
1071	52577	Poor	PRIM	EMER	IP	Primary care, emergency care (stitches), inpatient
1039	52577	Very Good	PRIM	ORTHO	RAD	Primary, orthopedic, radiology, mental healthcare
1115	52577	Good	PRIM	RX		Check ups and medication management.
1054	52577	Fair	PRIM	SPEC	EMER	We do primary care outside of Oskaloosa. See specialist and emergency care at mhp.
1004	52550	Good	PRIM			PCP
1099	52577	Good	PULM			Pulmonologist
1037	52577	Very Good	RAD			MRI with dye because was unavailable after hours here
1083	52577	Good	RAD			MRI with dye because was unavailable after hours here
1020	52534	Good	SPEC	POD	SURG	Specialist appointment with a podiatric osteopathic surgeon and calcaneal osteotomy surgery
1011	50207	Very Good	SPEC	PULM	KID	Specialist for lungs and kidney's
1055	52577	Poor	SPEC			Specialty care
1112	52577	Very Good	SURG	AZ		surgeries in Az.
1048	52577	Good	SURG	PRIM		surgery, primary care
1169	52553	Good	SURG			Surgery
1023	52577	Good	SURG			surgery
1024	52577	Poor	SURG			Surgery
1050	52577	Good	SURG			surgery
1149	52577	Good	THYR	DESM	KID	Thyroid, Des Moines. Kidney Stones, Grinnell.
1150	52577	Good	URG	PRIM		Urgent care, primary care
1040	52577	Good	URG			urgent care
1110	52577	Fair	UROL	OBG	ENDO	Urogynecologist, endocrinology, dermatology, pulmonology, ophthalmology

Community Health Needs Assessment 2017 - Mahaska Health Partnership (Primary Service Area)

Let Your Voice Be Heard!

Mahaska Health Partnership, in collaboration with Mahaska Health Partnership Public Health, is updating its previous Community Health Needs Assessment (CHNA). Your feedback from this survey will help us identify the current health issues in our community. While your participation is voluntary, we would greatly appreciate your input. All answers will be kept confidential.

All 2017 Community Health Needs Assessment feedback is due by Friday, December 13. Thank you for your participation.

Community Health Needs Assessment 2017 - Mahaska Health Partnership (Primary Service Area)

Part I: Introduction

1. How do you rate the "Overall Quality" of healthcare delivery in our community?

	Very Good	Good	Fair	Poor	Very Poor
Health Rating:	<input type="radio"/>	<input type="radio"/>	<input type="radio"/>	<input type="radio"/>	<input type="radio"/>

Community Health Needs Assessment 2017 - Mahaska Health Partnership (Primary Service Area)

2. Are there healthcare services in the Mahaska Health Partnership Primary Service Area that you feel need to be improved and/or changed? (Please be specific.)

Community Health Needs Assessment 2017 - Mahaska Health Partnership (Primary Service Area)

3. From our previous CHNA, a number of health needs were identified as priorities. Are any of these previous CHNA needs still an “Ongoing Problem” in the Mahaska Health Partnership Primary Service Area?

	Not a Problem Anymore	Somewhat of a Problem	Major Problem
Alcohol	<input type="radio"/>	<input type="radio"/>	<input type="radio"/>
Disease Control and Surveillance	<input type="radio"/>	<input type="radio"/>	<input type="radio"/>
Environmental Hazards (Air, Safety, Water, etc.)	<input type="radio"/>	<input type="radio"/>	<input type="radio"/>
Health Emergencies and Communication	<input type="radio"/>	<input type="radio"/>	<input type="radio"/>
Health Insurance	<input type="radio"/>	<input type="radio"/>	<input type="radio"/>
Health Transportation	<input type="radio"/>	<input type="radio"/>	<input type="radio"/>
Immunizations and Vaccinations	<input type="radio"/>	<input type="radio"/>	<input type="radio"/>
Mental Health	<input type="radio"/>	<input type="radio"/>	<input type="radio"/>
Obesity (Physical Activity and Healthy Foods)	<input type="radio"/>	<input type="radio"/>	<input type="radio"/>
Prevent Injuries (Disability, Brain Injury and Falls)	<input type="radio"/>	<input type="radio"/>	<input type="radio"/>
Public Emergencies Communication	<input type="radio"/>	<input type="radio"/>	<input type="radio"/>
Violence and Domestic Abuse	<input type="radio"/>	<input type="radio"/>	<input type="radio"/>

Community Health Needs Assessment 2017 - Mahaska Health Partnership (Primary Service Area)

4. Please select the top three most pressing community health needs that need improvement.

- | | |
|---|--|
| <input type="checkbox"/> Alcohol | <input type="checkbox"/> Immunizations and Vaccinations |
| <input type="checkbox"/> Disease Control and Surveillance | <input type="checkbox"/> Mental Health |
| <input type="checkbox"/> Environmental Hazards (Safety, Water, Air, etc.) | <input type="checkbox"/> Obesity (Physical Activity and Healthy Foods) |
| <input type="checkbox"/> Health Emergencies and Communication | <input type="checkbox"/> Prevent Injuries (Disability, Brain Injuries and Falls) |
| <input type="checkbox"/> Health Insurance | <input type="checkbox"/> Public Emergencies Communication |
| <input type="checkbox"/> Health Transportation | <input type="checkbox"/> Violence and Domestic Abuse |

Community Health Needs Assessment 2017 - Mahaska Health Partnership (Primary Service Area)

5. How would Mahaska Health Partnership Primary Service Area residents rate each of the following services? (Please select one box per row.)

	Very Good	Good	Fair	Poor	Very Poor	N/A
Ambulance Services	<input type="radio"/>	<input type="radio"/>	<input type="radio"/>	<input type="radio"/>	<input type="radio"/>	<input type="radio"/>
Child Care	<input type="radio"/>	<input type="radio"/>	<input type="radio"/>	<input type="radio"/>	<input type="radio"/>	<input type="radio"/>
Chiropractors	<input type="radio"/>	<input type="radio"/>	<input type="radio"/>	<input type="radio"/>	<input type="radio"/>	<input type="radio"/>
Dentists	<input type="radio"/>	<input type="radio"/>	<input type="radio"/>	<input type="radio"/>	<input type="radio"/>	<input type="radio"/>
Emergency Room	<input type="radio"/>	<input type="radio"/>	<input type="radio"/>	<input type="radio"/>	<input type="radio"/>	<input type="radio"/>
Non-Emergent Same Day Care	<input type="radio"/>	<input type="radio"/>	<input type="radio"/>	<input type="radio"/>	<input type="radio"/>	<input type="radio"/>
Urgent Care	<input type="radio"/>	<input type="radio"/>	<input type="radio"/>	<input type="radio"/>	<input type="radio"/>	<input type="radio"/>
Eye Doctor / Optometrist	<input type="radio"/>	<input type="radio"/>	<input type="radio"/>	<input type="radio"/>	<input type="radio"/>	<input type="radio"/>
Family Planning Services	<input type="radio"/>	<input type="radio"/>	<input type="radio"/>	<input type="radio"/>	<input type="radio"/>	<input type="radio"/>
Home Health	<input type="radio"/>	<input type="radio"/>	<input type="radio"/>	<input type="radio"/>	<input type="radio"/>	<input type="radio"/>
Hospice	<input type="radio"/>	<input type="radio"/>	<input type="radio"/>	<input type="radio"/>	<input type="radio"/>	<input type="radio"/>

Community Health Needs Assessment 2017 - Mahaska Health Partnership (Primary Service Area)

6. How would Mahaska Health Partnership Primary Service Area residents rate each of the following?
(Please select one per row.)

	Very Good	Good	Fair	Poor	Very Poor	N/A
Inpatient Services	<input type="radio"/>	<input type="radio"/>	<input type="radio"/>	<input type="radio"/>	<input type="radio"/>	<input type="radio"/>
Mental Health Services	<input type="radio"/>	<input type="radio"/>	<input type="radio"/>	<input type="radio"/>	<input type="radio"/>	<input type="radio"/>
Nursing Home	<input type="radio"/>	<input type="radio"/>	<input type="radio"/>	<input type="radio"/>	<input type="radio"/>	<input type="radio"/>
Outpatient Services	<input type="radio"/>	<input type="radio"/>	<input type="radio"/>	<input type="radio"/>	<input type="radio"/>	<input type="radio"/>
Pharmacy	<input type="radio"/>	<input type="radio"/>	<input type="radio"/>	<input type="radio"/>	<input type="radio"/>	<input type="radio"/>
Primary Care	<input type="radio"/>	<input type="radio"/>	<input type="radio"/>	<input type="radio"/>	<input type="radio"/>	<input type="radio"/>
Public Health Department	<input type="radio"/>	<input type="radio"/>	<input type="radio"/>	<input type="radio"/>	<input type="radio"/>	<input type="radio"/>
School Nurse	<input type="radio"/>	<input type="radio"/>	<input type="radio"/>	<input type="radio"/>	<input type="radio"/>	<input type="radio"/>
Specialists	<input type="radio"/>	<input type="radio"/>	<input type="radio"/>	<input type="radio"/>	<input type="radio"/>	<input type="radio"/>

Community Health Needs Assessment 2017 - Mahaska Health Partnership (Primary Service Area)

7. Throughout the past two years, did you or someone you know receive healthcare services outside of the Mahaska Health Partnership Primary Service Area?

- ☐ Yes
- ☐ Do Not know
- ☐ No

If yes, please specify the healthcare services received.

Community Health Needs Assessment 2017 - Mahaska Health Partnership (Primary Service Area)

8. Are there any other health needs from the list below that need to be discussed at our upcoming CHNA Town Hall meeting? (Please select all that need to be on our agenda.)

- | | | |
|--|--|---|
| <input type="checkbox"/> Abuse / Violence | <input type="checkbox"/> Mental Illness | <input type="checkbox"/> Suicide |
| <input type="checkbox"/> Alcohol | <input type="checkbox"/> Nutrition | <input type="checkbox"/> Teen Pregnancy |
| <input type="checkbox"/> Cancer | <input type="checkbox"/> Obesity | <input type="checkbox"/> Tobacco Use |
| <input type="checkbox"/> Diabetes | <input type="checkbox"/> Ozone (Air) | <input type="checkbox"/> Vaccinations |
| <input type="checkbox"/> Drugs / Substance Abuse | <input type="checkbox"/> Physical Exercise | <input type="checkbox"/> Water Quality |
| <input type="checkbox"/> Family Planning | <input type="checkbox"/> Poverty | <input type="checkbox"/> Wellness Education |
| <input type="checkbox"/> Heart Disease | <input type="checkbox"/> Respiratory Disease | |
| <input type="checkbox"/> Lead Exposure | <input type="checkbox"/> Sexually Transmitted Diseases | |
| <input type="checkbox"/> Other (please specify) | | |

Community Health Needs Assessment 2017 - Mahaska Health Partnership (Primary Service Area)

9. What is your home zip code?

Community Health Needs Assessment 2017 - Mahaska Health Partnership (Primary Service Area)

Demographics

10. For reporting purposes, are you involved in or are you a ...? (Please select all that apply).

- | | | |
|---|---|---|
| <input type="checkbox"/> Board Member | <input type="checkbox"/> Elected Official - City / County | <input type="checkbox"/> Other Health Professional |
| <input type="checkbox"/> Business / Merchant | <input type="checkbox"/> EMS / Emergency | <input type="checkbox"/> Parent / Caregiver |
| <input type="checkbox"/> Case Manager / Discharge Planner | <input type="checkbox"/> Farmer / Rancher | <input type="checkbox"/> Pharmacy |
| <input type="checkbox"/> Civic Club / Chamber | <input type="checkbox"/> Health Department | <input type="checkbox"/> Physician (MD / DO) |
| <input type="checkbox"/> Charitable Foundation | <input type="checkbox"/> Hospital | <input type="checkbox"/> Physician Clinic |
| <input type="checkbox"/> Clergy / Congregational Leader | <input type="checkbox"/> Housing / Builder | <input type="checkbox"/> Media (Paper, TV, Radio) |
| <input type="checkbox"/> College / University | <input type="checkbox"/> Insurance | <input type="checkbox"/> Senior Care / Nursing Home |
| <input type="checkbox"/> Consumer Advocate | <input type="checkbox"/> Labor | <input type="checkbox"/> Social Worker |
| <input type="checkbox"/> Consumers of Healthcare | <input type="checkbox"/> Law Enforcement | <input type="checkbox"/> Veteran |
| <input type="checkbox"/> Dentist | <input type="checkbox"/> Low Income / Free Clinics | <input type="checkbox"/> Welfare / Social Service |
| <input type="checkbox"/> Economic Development | <input type="checkbox"/> Mental Health | |
| <input type="checkbox"/> Education Official / Teacher | <input type="checkbox"/> Nursing | |
| <input type="checkbox"/> Other (please specify) | | |

Community Health Needs Assessment 2017 - Mahaska Health Partnership (Primary Service Area)

You have just completed the 2017 Community Health Needs Assessment Survey. Thank you for your participation.

By selecting "Done", you are submitting your responses and giving others an opportunity to complete the same survey .

CHNA Report Contact :



Vince Vandelaar, MBA
VVV Consultants LLC
***Adjunct Professor / Professional Healthcare
Marketing and Strategic Planning Consulting
Services***

601 N Mahaffie, Olathe, KS 66061
(913) 302-7264 (C)
VVV@VandelaarMarketing.com

LinkedIn: vandelaar
Website: VandelaarMarketing.com